

Oil Spill Program Offices, Response Equipment & Evacuation Staging Areas 2022



Commissioner Dawn Buckingham, M.D.



- Response Trailers

●

Hurricane Staging Areas

Oil Spill Regions

■

Region 1

■

Region 2

■

Region 3

■

Region 4

■

Region 5

★

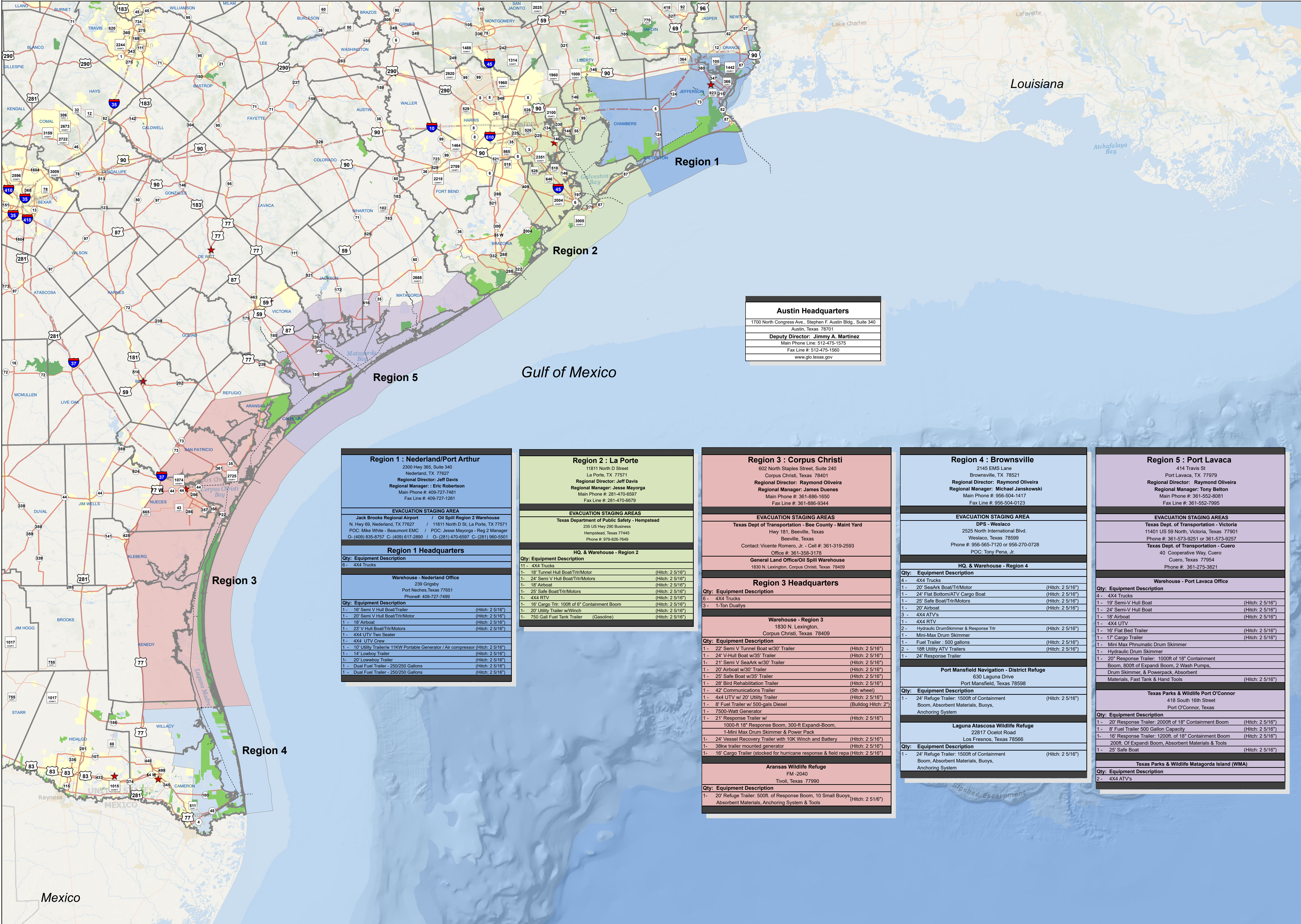
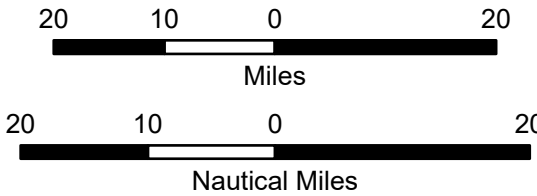
Evacuation Staging Areas



The Texas General Land Office makes no representations or warranties regarding the accuracy or completeness of the information depicted on this map or the data from which it was produced. This map is not suitable for navigational purposes and does not purport to depict boundaries of private and public land.

Produced on 05/12/2022  
GLO Oil Spill Logistics Team  
GLO Geospatial Technology Services

1:1,100,000



Austin Headquarters
1700 North Congress Ave., Stephen F. Austin Bldg., Suite 340 Austin, Texas 78701
Deputy Director: <b>Jimmy A. Martinez</b>
Main Phone Line: 512-475-1575
Fax Line #: 512-475-1560
www.glo.texas.gov

Region 1 : Nederland/Port Arthur
2300 Hwy 365, Suite 340 Nederland, TX 77627 Regional Director: <b>Jeff Davis</b> Regional Manager: <b>Eric Robertson</b> Main Phone #: 409-727-7481 Fax Line #: 409-727-1261
EVACUATION STAGING AREA
Jack Brooks Regional Airport / Oil Spill Region 2 Warehouse N. Hwy 69, Nederland, TX 77627 / 11811 North D St, La Porte, TX 77571 POC: Mike White - Beaumont EMC / POC: Jesse Mayorga - Reg 2 Manager O- (409) 835-8757 C- (409) 617-2890 / O- (281) 470-6597 C- (281) 960-5501
Region 1 Headquarters
Qty: Equipment Description 6 - 4X4 Trucks
Warehouse - Nederland Office
239 Grigsby Port Neches, Texas 77651 Phone#: 409-727-7499
Qty: Equipment Description
1 - 16' Semi V Hull Boat/Trailer (Hitch: 2 5/16") 1 - 20' Semi V Hull Boat/Trailer/Motor (Hitch: 2 5/16") 1 - 18' Airboat (Hitch: 2 5/16") 1 - 22' V Hull Boat/Trailer/Motors (Hitch: 2 5/16") 1 - 4X4 UTV Two Seater 1 - 4X4 UTV Crew 1 - 10' Utility Trailer/w/ 11KW Portable Generator / Air compressor (Hitch: 2 5/16") 1 - 14' Lowboy Trailer (Hitch: 2 5/16") 1 - 20' Lowboy Trailer (Hitch: 2 5/16") 1 - Dual Fuel Trailer - 250/250 Gallons (Hitch: 2 5/16") 1 - Dual Fuel Trailer - 250/250 Gallons (Hitch: 2 5/16")

Region 2 : La Porte
11811 North D Street La Porte, TX 77571 Regional Director: <b>Jeff Davis</b> Regional Manager: <b>Jesse Mayorga</b> Main Phone #: 281-470-6597 Fax Line #: 281-470-6679
EVACUATION STAGING AREAS
Texas Department of Public Safety - Hempstead 235 US Hwy 290 Business Hempstead, Texas 77445 Phone #: 979-826-7649
HQ. & Warehouse - Region 2
Qty: Equipment Description 11 - 4X4 Trucks 1 - 18' Tunnel Hull Boat/Trlr/Motor (Hitch: 2 5/16") 1 - 24' V-Hull Boat/Trlr/Motors (Hitch: 2 5/16") 1 - 18' Airboat (Hitch: 2 5/16") 1 - 25' Safe Boat/Trlr/Motors (Hitch: 2 5/16") 1 - 4X4 RTV (Hitch: 2 5/16") 1 - 16' Cargo Trlr- 100ft of 6" Containment Boom (Hitch: 2 5/16") 1 - 20' Utility Trailer w/Winch (Hitch: 2 5/16") 1 - 750 Gall Fuel Tank Trailer (Gasoline) (Hitch: 2 5/16")

Region 3 : Corpus Christi
602 North Staples Street, Suite 240 Corpus Christi, Texas 78401 Regional Director: <b>Raymond Oliveira</b> Regional Manager: <b>James Duenes</b> Main Phone #: 361-886-1650 Fax Line #: 361-886-9344
EVACUATION STAGING AREAS
Texas Dept of Transportation - Bee County - Maint Yard Hwy 181, Beeville, Texas Beeville, Texas Contact: Vicente Romero, Jr. - Cell #: 361-319-2593 Office #: 361-358-3178
General Land Office/Oil Spill Warehouse
1830 N. Lexington, Corpus Christi, Texas 78409

Region 3 Headquarters
Qty: Equipment Description 6 - 4X4 Trucks 3 - 1-Ton Duallys
Warehouse - Region 3
1830 N. Lexington, Corpus Christi, Texas 78409
Qty: Equipment Description
1 - 22' Semi V Tunnel Boat w/30' Trailer (Hitch: 2 5/16") 1 - 24' V-Hull Boat w/35' Trailer (Hitch: 2 5/16") 1 - 21' Semi V SeaArk w/30' Trailer (Hitch: 2 5/16") 1 - 20' Airboat w/30' Trailer (Hitch: 2 5/16") 1 - 25' Safe Boat w/35' Trailer (Hitch: 2 5/16") 1 - 28' Bird Rehabilitation Trailer (Hitch: 2 5/16") 1 - 42' Communications Trailer (5th wheel) 1 - 4x4 UTV w/ 20' Utility Trailer (Hitch: 2 5/16") 1 - 8' Fuel Trailer w/ 500-gals Diesel (Bulldog Hitch: 2") 1 - 7500-Watt Generator (Hitch: 2 5/16") 1 - 21' Response Trailer w/ 1000-ft 18" Response Boom, 300-ft Expandi-Boom, 1-Mini Max Drum Skimmer & Power Pack (Hitch: 2 5/16") 1 - 24' Vessel Recovery Trailer with 10K Winch and Battery (Hitch: 2 5/16") 1 - 38kw trailer mounted generator (Hitch: 2 5/16") 1 - 16' Cargo Trailer (stocked for hurricane response & field repa (Hitch: 2 5/16")

Aransas Wildlife Refuge
FM -2040 Tivoli, Texas 77990
Qty: Equipment Description
1 - 20' Refuge Trailer: 500ft. of Response Boom, 10 Small Buoys Absorbent Materials, Anchoring System & Tools (Hitch: 2 5/16")

Region 4 : Brownsville
2145 EMS Lane Brownsville, TX 78521 Regional Director: <b>Raymond Oliveira</b> Regional Manager: <b>Michael Janskowski</b> Main Phone #: 361-552-0081 Fax Line #: 361-552-0123
EVACUATION STAGING AREA
DPS - Weslaco 2525 North International Blvd. Weslaco, Texas 78599 Phone #: 956-565-7120 or 956-270-0728 POC: Tony Pena, Jr.
HQ. & Warehouse - Region 4
Qty: Equipment Description 4 - 4X4 Trucks 1 - 20' SeaArk Boat/Trlr/Motor (Hitch: 2 5/16") 1 - 24' Flat Bottom/ATV Cargo Boat (Hitch: 2 5/16") 1 - 25' Safe Boat/Trlr/Motors (Hitch: 2 5/16") 1 - 20' Airboat (Hitch: 2 5/16") 3 - 4X4 ATVs 1 - 4X4 RTV 2 - Hydraulic Drum Skimmer & Response Trlr (Hitch: 2 5/16") 1 - Mini-Max Drum Skimmer (Hitch: 2 5/16") 1 - Fuel Trailer : 500 gallons (Hitch: 2 5/16") 2 - 18ft Utility ATV Trailers (Hitch: 2 5/16") 1 - 24' Response Trailer

Port Mansfield Navigation - District Refuge
630 Laguna Drive Port Mansfield, Texas 78598

Qty: Equipment Description
1 - 24' Refuge Trailer: 1500ft of Containment Boom, Absorbent Materials, Buoys, Anchoring System (Hitch: 2 5/16")

Laguna Atascosa Wildlife Refuge
22817 Ocelot Road Los Fresnos, Texas 78566
Qty: Equipment Description
1 - 24' Refuge Trailer: 1500ft of Containment Boom, Absorbent Materials, Buoys, Anchoring System (Hitch: 2 5/16")

Region 5 : Port Lavaca
414 Travis St Port Lavaca, TX 77979 Regional Director: <b>Raymond Oliveira</b> Regional Manager: <b>Tony Belton</b> Main Phone #: 361-552-0081 Fax Line #: 361-552-7995
EVACUATION STAGING AREAS
Texas Dept. of Transportation - Victoria 11401 US 59 North, Victoria, Texas 77901 Phone #: 361-573-9251 or 361-573-9257 Texas Dept. of Transportation - Cuero 40 Cooperative Way, Cuero Cuero, Texas 77954 Phone #: 361-275-3821
Warehouse - Port Lavaca Office
Qty: Equipment Description 4 - 4X4 Trucks 1 - 19' Semi-V Hull Boat (Hitch: 2 5/16") 1 - 24' Semi-V Hull Boat (Hitch: 2 5/16") 1 - 18' Airboat (Hitch: 2 5/16") 1 - 4X4 UTV 1 - 16' Flat Bed Trailer (Hitch: 2 5/16") 1 - 17' Cargo Trailer (Hitch: 2 5/16") 1 - Mini Max Phnumatic Drum Skimmer 1 - Hydraulic Drum Skimmer 1 - 20' Response Trailer: 1000ft of 18" Containment Boom, 800ft of Expandi Boom, 2 Wash Pumps, Drum Skimmer, & Powerpack, Absorbent Materials, Fast Tank & Hand Tools (Hitch: 2 5/16")
Texas Parks & Wildlife Port O'Connor
418 South 16th Street Port O'Connor, Texas
Qty: Equipment Description
1 - 20' Response Trailer: 2000ft of 18" Containment Boom (Hitch: 2 5/16") 1 - 8' Fuel Trailer 500 Gallon Capacity (Hitch: 2 5/16") 1 - 16' Response Trailer: 1200ft. of 18" Containment Boom (Hitch: 2 5/16") 200ft. Of Expandi Boom, Absorbent Materials & Tools (Hitch: 2 5/16") 1 - 25' Safe Boat (Hitch: 2 5/16")
Texas Parks & Wildlife Matagorda Island (WMA)
Qty: Equipment Description 2 - 4X4 ATVs