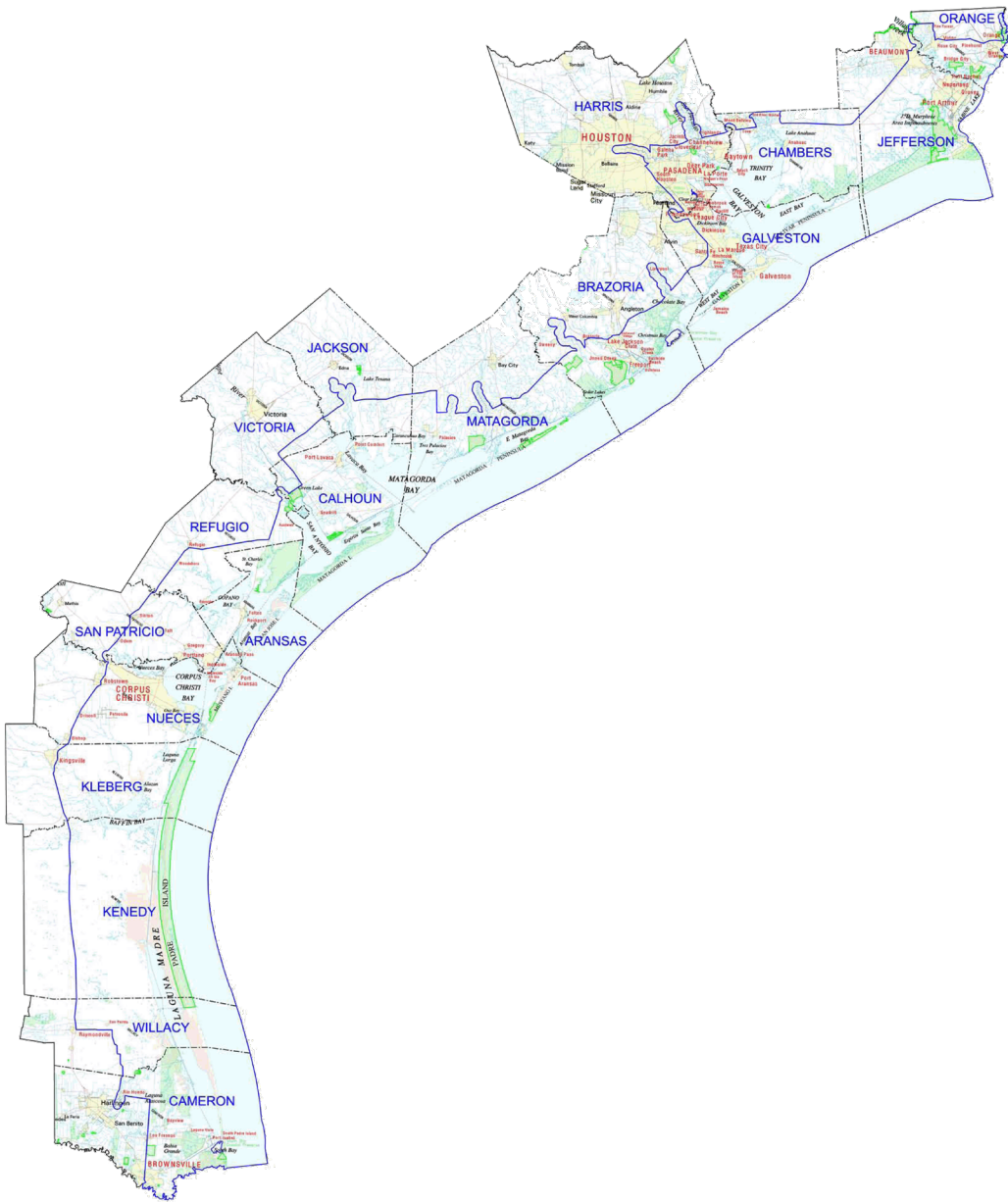




Coastal Resources CEPRA Program



Stewards of the Texas Coast

- 367 miles of gulf shoreline
- 3,300 miles of bay shoreline
- 18 coastal counties with 6.1 million residents (2010)
- 2 peninsulas and 6 barrier islands (including longest undeveloped barrier island in the world)

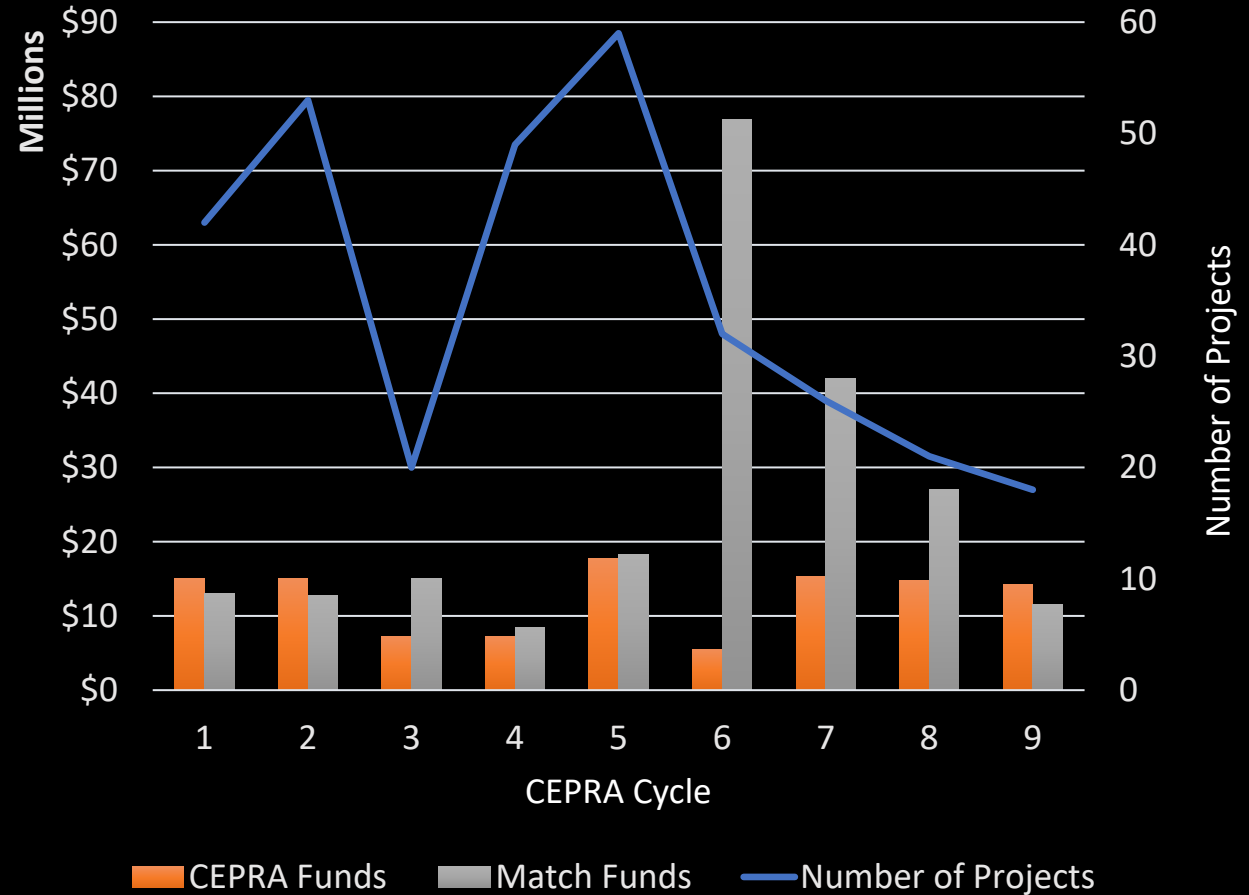
Texas General Land Office
George P. Bush, Commissioner



CEPRA History

1999 – Passage of the Coastal Erosion Planning & Response Act (TNRC § 33.601 – 613) implements the CEPRA program on a biennium cycle that matches state-appropriated funds with local **and/or other non-CEPRA** match funds

- **\$112.3M in funding for the state**
- **\$224.9M in funding from project partners**
- **320 projects total**



CEPRA Project Requirements

- ✓ Located in coastal zone boundary
- ✓ Full site access
- ✓ Gulf facing beaches have erosion rate of > 2 ft/yr
- ✓ Construction possible within two-year funding cycle (preferred)
- ✓ Complies with **Texas** Open Beaches Act (**TNRC Ch. 61**) and Dune Protection Act
- ✓ (**TNRC Ch. 63**) **Local** Erosion Response Plan filed (if applicable)
- ✓ Local match
 - Beach Nourishment – 25% min. partner **cost-share** match (can include dune restoration)
 - All other project types require a 40% min. partner **cost-share** match



The Role of the 2019 Coastal Resiliency Master Plan

- Priority list of Tier 1 projects determined in coordination with coastal stakeholders
- By utilizing the Resiliency Plan, the GLO is better positioned to leverage and capture additional funding streams
- Projects not in the 2019 Plan are applicable for CEPRA funding now
 - Applying for GLO funding for a project not currently identified in the Resiliency Plan allows it to be considered for funding in that cycle while also providing it a pathway to future Resiliency Plan consideration



CEPRA Eligible Tier I Projects

Region	1A	1B	2	3	4
Total**	9	13	12	20	7
Beach Nourishment	3	0	1	0	1
Dune Restoration	0*	0	0*	0	0*
Shoreline Stabilization	2	6	5	11	2
Marsh/Habitat Restoration	3	5	3	7	1
BUDM	1	2	3	2	3
Structure Relocation/ Demolition	0	0	0	0	0
Data Collection & Studies	2 (not region-specific)				

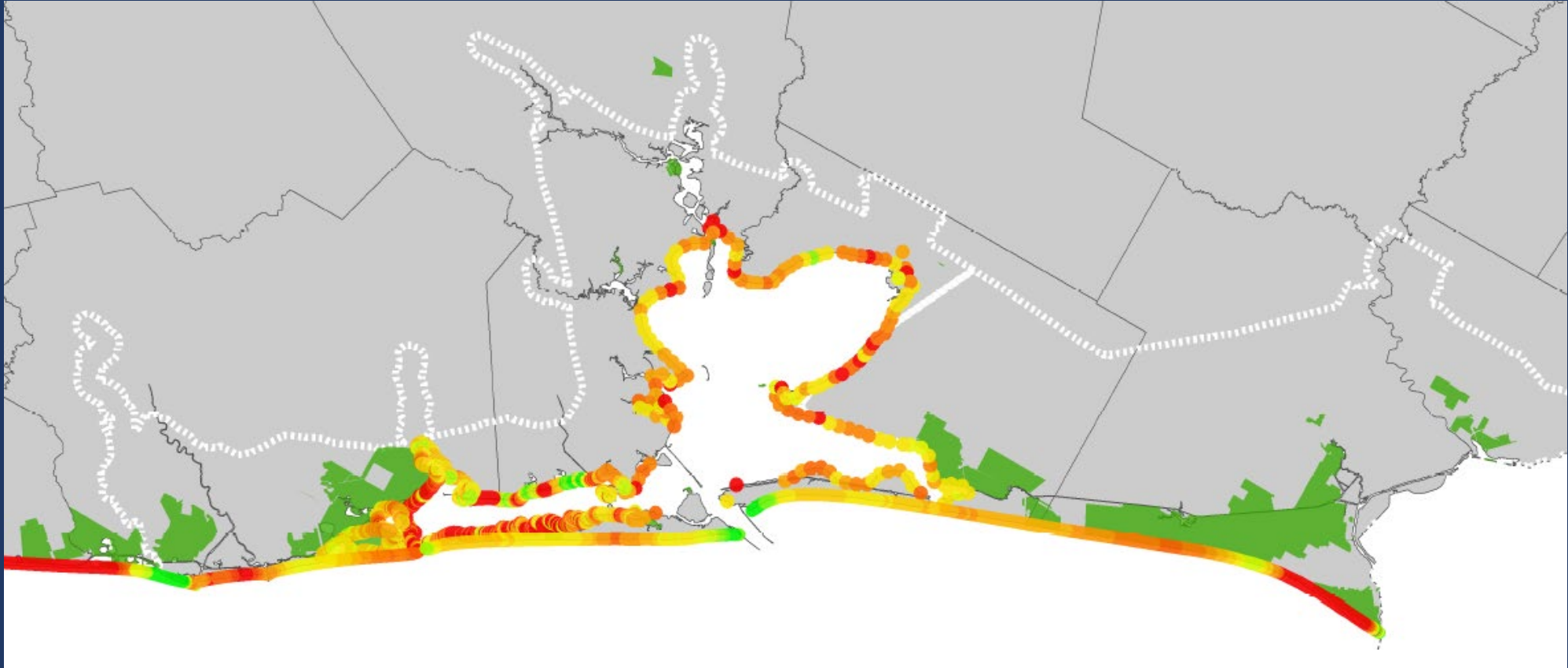
- **Beach nourishment project in this region includes dune restoration**

Texas General Land Office
George P. Bush, Commissioner



Coastal Erosion Data

Region 1

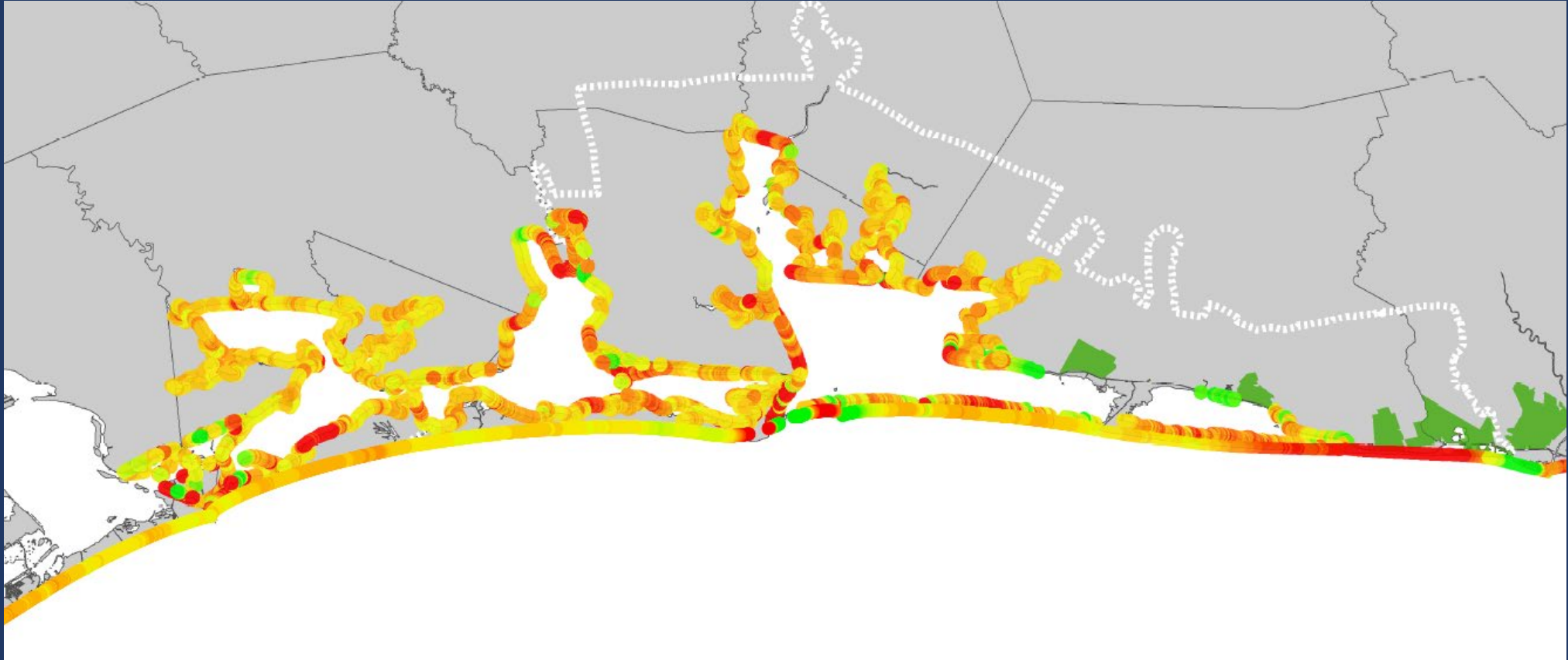


Texas General Land Office
George P. Bush, Commissioner



Coastal Erosion Data

Region 2

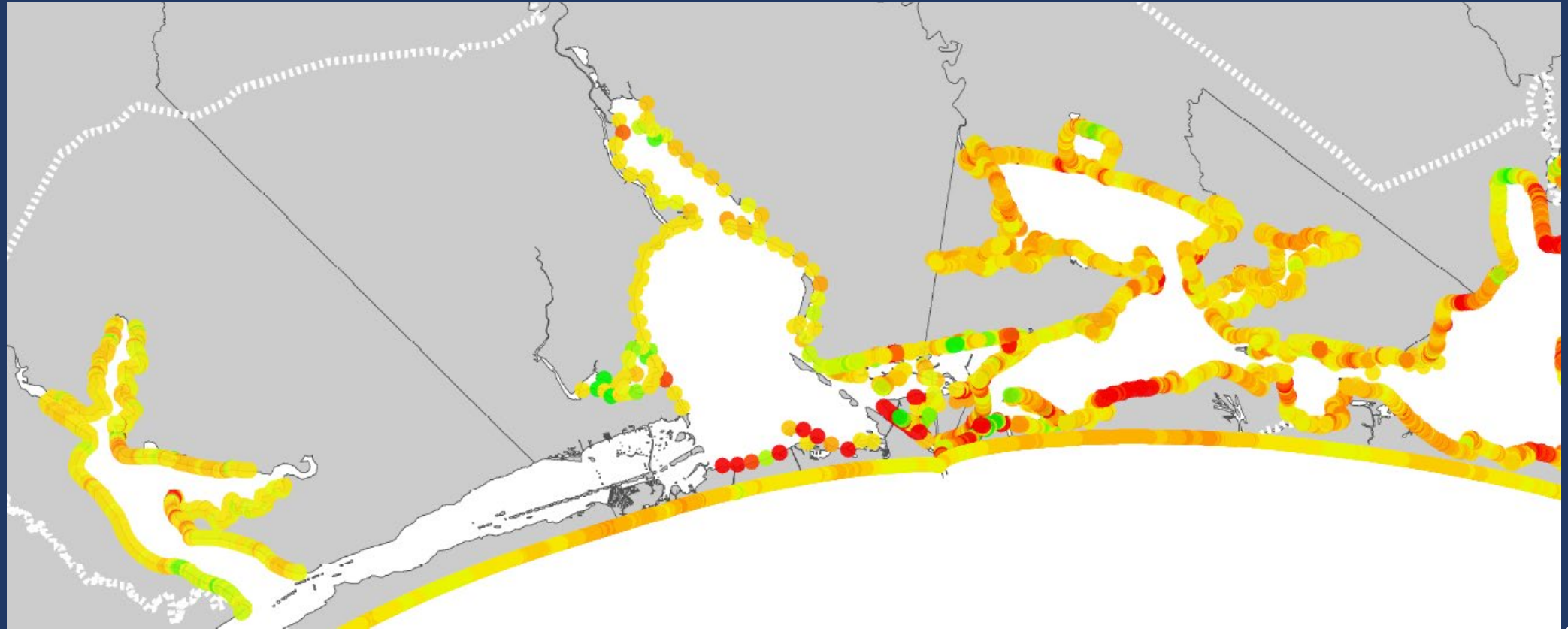


Texas General Land Office
George P. Bush, Commissioner



Coastal Erosion Data

Region 3

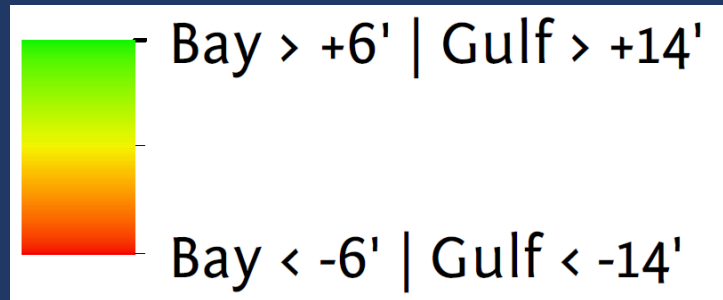
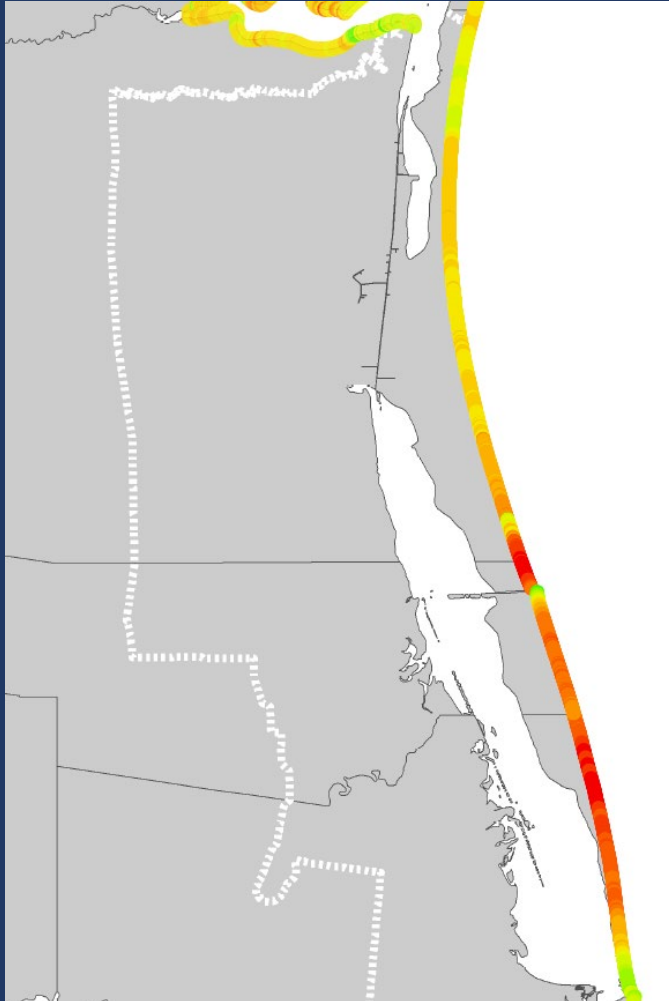


Texas General Land Office
George P. Bush, Commissioner



Coastal Erosion Data

Region 4



CEPRA Project Types

- Data Collection & Studies
- Beach Nourishment - Gulf and Bay Beaches
- Dune Restoration
- Shoreline Stabilization
- Marsh/Habitat Restoration
- Beneficial Use of Dredged Material
- Structure Relocation/**Demolition**



Data Collection & Studies

Data Collection Examples

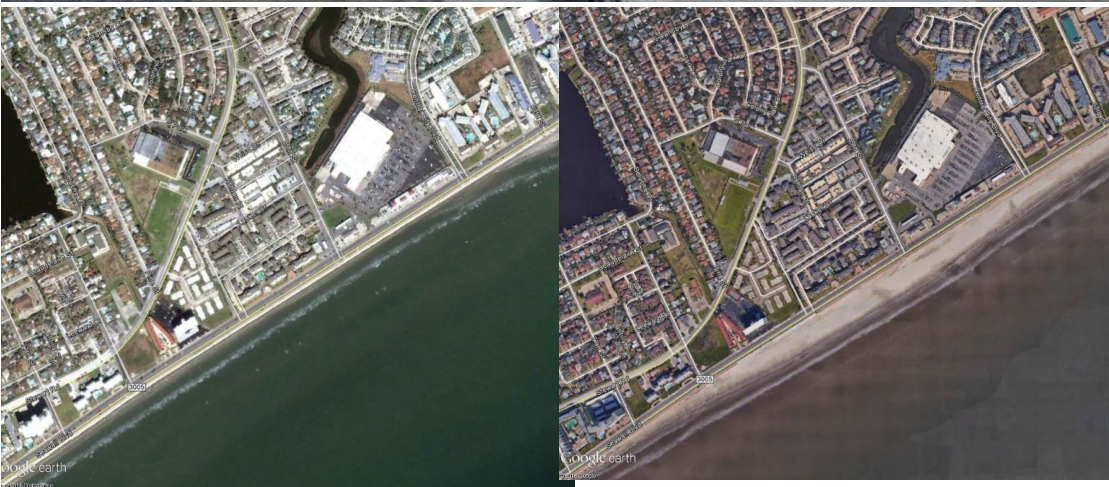
- Historical Erosion Rates
- Aerial Photography
- Geotechnical Investigations for Sand Sources

Study Examples

- USACE Upper Coast Erosion Feasibility Studies
- **GLO** Beach Monitoring and Maintenance Plan (**BMMP**)
- Sediment Management
- Economic & Natural Resource Benefit - **Cost** Studies of CEPRA Projects
- Coastwide Projects from the 2019 Resiliency Plan
- Demonstration Projects



Gulf Beach Nourishment



Gulf Beach Nourishment

Galveston Island

Galveston County, 2017

Texas General Land Office
George P. Bush, Commissioner





Gulf Beach Nourishment

Galveston Island West of Seawall

Galveston County, 2014

Texas General Land Office
George P. Bush, Commissioner





Gulf Beach Nourishment

Sargent Beach



Matagorda County, 2013

Texas General Land Office
George P. Bush, Commissioner



Bay Beach Nourishment





Bay Beach Nourishment

Rockport Beach

Aransas County, 2016

Texas General Land Office
George P. Bush, Commissioner





Bay Beach Nourishment

Sylvan Beach

Harris County, 2010

Texas General Land Office
George P. Bush, Commissioner





Bay Beach Nourishment

Indianola Beach

Calhoun County, 2003

Texas General Land Office
George P. Bush, Commissioner





Bay Beach Nourishment

North Beach

Nueces County, 2016

Texas General Land Office
George P. Bush, Commissioner



Dune Restoration

Dune Restoration

**Top Photo: Jamaica Beach,
Galveston County**



**Bottom Photo: McFaddin NWR,
Jefferson County**



Texas General Land Office
George P. Bush, Commissioner



Marsh/Habitat Restoration



Marsh/Habitat Restoration

Virginia Point



Galveston County, 2016

Texas General Land Office
George P. Bush, Commissioner





Marsh/Habitat Restoration

Delehide Cove

Galveston County, 2006

Texas General Land Office
George P. Bush, Commissioner





Marsh/Habitat Restoration

Goose Island State Park



Aransas County, 2003

Texas General Land Office
George P. Bush, Commissioner





Marsh/Habitat Restoration

Nueces Bay Portland Causeway Marsh

Nueces and San Patricio County, 2015

Texas General Land Office
George P. Bush, Commissioner





Marsh/Habitat Restoration

Arturo Galvan Coastal Park Living Shoreline

Cameron County, 2015

Texas General Land Office
George P. Bush, Commissioner



Shoreline Stabilization

Shoreline Stabilization

Moses Lake

Galveston County, 2015



Texas General Land Office
George P. Bush, Commissioner



Shoreline Stabilization

GIWW (McFaddin NWR)

Jefferson County, 2009



Texas General Land Office
George P. Bush, Commissioner



Shoreline Stabilization

Port Aransas Nature Preserve

Nueces County, 2013



Texas General Land Office
George P. Bush, Commissioner



Shoreline Stabilization

Indian Point



San Patricio County, 2015



Texas General Land Office
George P. Bush, Commissioner



Beneficial Use of Dredged Material

Beneficial Use of Dredged Material

Chester Island



Matagorda County, 2017

Texas General Land Office
George P. Bush, Commissioner





Beneficial Use of Dredged Material

South Padre Island
BUDM from Brownsville Ship Channel

Cameron County, 2013 & 2016

Texas General Land Office
George P. Bush, Commissioner



CEPRA Cycle 12 Key Dates

June 1, 2021

- Submit application by Tuesday, June 1 at 5 p.m.

Fall 2021

- Receive notification regarding status categorization of project
- Projects eligible to start





COASTAL MANAGEMENT

- ▶ Hurricane Preparedness & Planning
- ▶ Open Beaches
- ▶ Rollover Pass
- ▶ Permitting
- ▶ Leasing & Easements
- ▶ Forms
- ▶ Coastal Erosion
- ▶ Environmental Protection
- ▶ Federal Consistency
- ▶ Programs, Tools & Resources
- ▶ NRDA

COASTAL MASTER RESILIENCY PLAN

- ▶ Overview
- ▶ FAQs
- ▶ Region 1
- ▶ Region 2
- ▶ Region 3
- ▶ Region 4
- ▶ Resources

GRANT PROJECTS

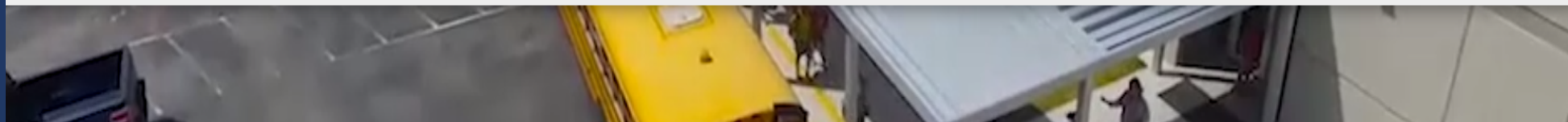
- ▶ Funding Opportunities
- ▶ Coastal Management Program
- ▶ Coastal Impact Assistance Program
- ▶ Coastal Erosion Planning & Response Act
- ▶ Oil Spill Prevention & Response Research
- ▶ Grant Projects Listing

HURRICANES & TROPICAL STORMS

- Hanna
- ▶ Rebuilding & Repairing Coastal Structures

OIL SPILL

- ▶ Overview
- ▶ Programs
- ▶ Derelict Vessels
- ▶ Vessel Registration & Vessel Search
- ▶ Facilities Certification
- ▶ Oil Spill Toolkit
- ▶ Forms



THE REPUBLIC OF TEXAS CREATED THE GENERAL LAND OFFICE IN 1836.

The oldest state agency in Texas, the GLO was formed to determine who owned what and where after the Texans and Tejanos won independence. Today the General Land Office manages state lands, operates the Alamo, helps Texans recovering from natural disasters, helps fund Texas public education through the Permanent School Fund, provides benefits to Texas Veterans, and manages the vast Texas coast.





Kevin Frenzel
CEPRA Program Manager
kevin.frenzel@glo.texas.gov
(512) 463-2482

Thomas Durnin
Project Manager
thomas.durnin@glo.texas.gov
(512) 463-1192

Kelly Brooks
Project Manager
kelly.brooks@glo.texas.gov
(512) 463-2198

Carver Wray
Project Manager
carver.wray@glo.texas.gov
(512) 463-1864

Ryan Hostak
Project Manager
ryan.hostak@glo.texas.gov
(512) 475-8930

Texas General Land Office
George P. Bush, Commissioner

