

**HEALTH & HUMAN  
SERVICES COMMISSION  
PROPERTIES TO BE  
RETAINED**

## Texas Health and Human Services Commission

## Abilene State Supported Living Center

## Location:

2501 Maple Street, Abilene, Taylor County, Texas

## Legal Description:

Volume 14, Page 127, Taylor County Deed Records

## Encumbrances

Physical: Cemetery on the Property



Location Map

Acres: ..... 235.73

Sen. Dist.:.....24 Rep. Dist.:.....71 FAR:.....0.06

Bldgs:.....94 Bldg Sq Ft ..... 627,314 sq.ft.

% in Floodplain: .....0% Slope: .....Moderate

Frontage:.....Maple Street

Zoning:.....Agriculture

Utilities: .....Electricity, Gas, Telephone, Wastewater, Water

Surrounding Uses:.....Residential, Industrial, Commercial, Vacant

Current Use:.....State Supported Living Center

Agency Projected Use:.....State Supported Living Center

The Texas Health and Human Services Commission utilizes this site as a state supported living center. Located west of FM 1750 on Maple Street in southeast Abilene, the site is improved with 94 buildings, exterior lighting, fencing, and asphalt parking. The surrounding land uses include vacant land, residential, commercial, and industrial developments.

## Recommendation:

*Retain for continued agency operations.*

## Texas Health and Human Services Commission

## Austin Central Office

**Location:**

909 West 45th Street, Austin, Travis County, Texas

**Legal Description:**

Volume L-1, Page 366, Volume M, Page 129, Volume Q, Page 674, Volume 55, Page 246, Travis County Deed Records

**Encumbrances**

Physical: None



Location Map

**Acres:** ..... 8.78**Sen. Dist.:**.....14 **Rep. Dist.:**.....49 **FAR:**.....0.24**Bldgs:**.....2 **Bldg Sq Ft** .....89,944 sq.ft.**% in Floodplain:** .....0% **Slope:**.....Level**Frontage:** .....West 45th St, North Lamar Blvd**Zoning:**.....Unzoned**Utilities:** .....Electricity, Gas, Telephone, Wastewater, Water**Surrounding Uses:** .....Medical, Commercial, Residential**Current Use:** .....State Central Office Building**Agency Projected Use:** .....State Central Office Building

The Texas Health and Human Services Commission utilizes this site as a central office. Located at the southeast corner of North Lamar Boulevard and West 45th Street in north-central Austin, the site is improved with a two-story and a three-story building, two portable buildings, a gazebo, exterior security lighting, and surface parking areas. The surrounding land uses include residential, medical, and commercial developments.

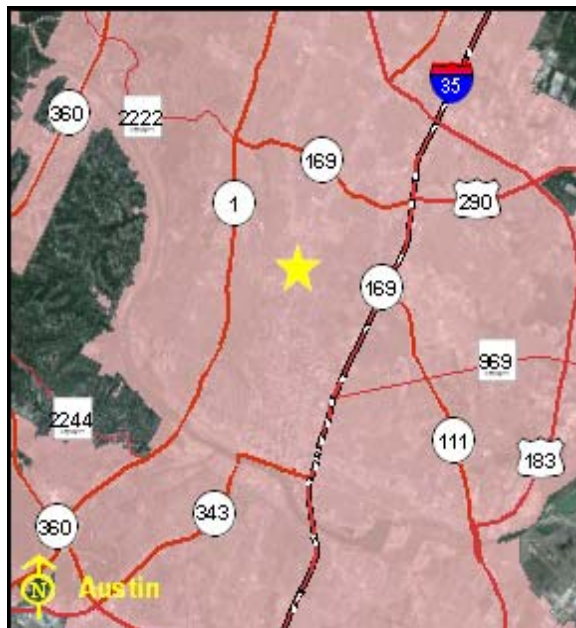
**Recommendation:***Retain for continued agency operations.*

## Texas Health and Human Services Commission

## Austin State Hospital

**Location:**

4110 Guadalupe Street, Austin, Travis County, Texas

**Legal Description:**Volume L-1, Page 366-367, Volume M, Page 129-130,  
Volume Q, Page 674, Volume 55, Page 246, 247-249,  
Travis County Deed Records**Encumbrances****Physical:** Cemetery on the Property

Location Map

**Acres:** ..... 128.05**Sen. Dist.:**.....14 **Rep. Dist.:**.....49 **FAR:**.....0.13**Bldgs:**.....39 **Bldg Sq Ft** .....745,017 sq.ft.**% in Floodplain:** .....0% **Slope:**.....Level**Frontage:** .....Guadalupe St, Lamar Blvd**Zoning:** .....Mixed-Use**Utilities:** .....Electricity, Gas, Telephone, Wastewater, Water**Surrounding Uses:**.....Residential, Commercial, Office, Medical**Current Use:**.....State Hospital**Agency Projected Use:**.....Mixed Development

The Texas Health and Human Services Commission utilizes this property as a state hospital, children's psychiatric unit, and administrative offices for HHSC. There are two long term leases totaling 41 acres. Located on Guadalupe and West 45th Streets in Austin, the property is improved with 39 buildings, chain-link fencing, and asphalt parking. The surrounding land uses include office, commercial, medical, and residential developments.

**Recommendation:***Retain for continued agency operations.*

## Texas Health and Human Services Commission

## Austin State Supported Living Center

**Location:**

2203 West 35th Street, Austin, Travis County, Texas

**Legal Description:**

Volume 286, Page 330, Travis County Deed Records



Location Map

**Encumbrances**

Physical: None

Acres: ..... 93.37

Sen. Dist.:.....14 Rep. Dist.:.....49 FAR:..... 0.14

Bldgs:.....65 Bldg Sq Ft .....568,997 sq.ft.

% in Floodplain: .....0% Slope: .....Moderate

Frontage:.....W 35th St, MoPac

Zoning: .....Unzoned

Utilities: .....Electricity, Gas, Telephone, Wastewater, Water

Surrounding Uses: .....Residential, Military, School

Current Use: .....State Supported Living Center

Agency Projected Use: .....State Supported Living Center

The Texas Health and Human Services Commission utilizes this property as a state supported living center. Located at the southwest corner of West 35th Street and MoPac in west Austin, the property is improved with 65 buildings, chain-link fencing, and asphalt parking. The surrounding land uses include a school, military, and residential developments.

**Recommendation:***Retain for continued agency operations.*



## Texas Health and Human Services Commission

## Big Spring State Hospital

**Location:**

1901 North U.S. HWY 87, Big Spring, Howard County, Texas

**Legal Description:**

Volume 99, Pages 165, 390, Volume 100, Page 157, Volume 476, Page 571, Howard County Deed Records

**Encumbrances**

**Physical:** Cemetery on the Property



Location Map

**Acres:** .....124.20

**Sen. Dist.:**.....31 **Rep. Dist.:**.....72 **FAR:**.....0.06

**Bldgs:**.....40 **Bldg Sq Ft** .....347,681 sq.ft.

**% in Floodplain:** .....0% **Slope:** .....Moderate

**Frontage:** .....U.S. Hwy 87, IH-20

**Zoning:** .....Industrial

**Utilities:** .....Electricity, Gas, Telephone, Wastewater, Water

**Surrounding Uses:** .....Commercial, Industrial, Recreational, Vacant

**Current Use:** .....State Hospital

**Agency Projected Use:** .....State Hospital

The Texas Health and Human Services Commission utilizes this site as a state hospital. Located on Highway 87 in the city limits of Big Spring, the property is improved with 40 buildings, perimeter fencing, and asphalt parking. The surrounding land uses include vacant land, recreational, industrial, and commercial developments.

**Recommendation:**

*Retain for continued agency operations.*

## Texas Health and Human Services Commission

## Brenham State Supported Living Center

**Location:**

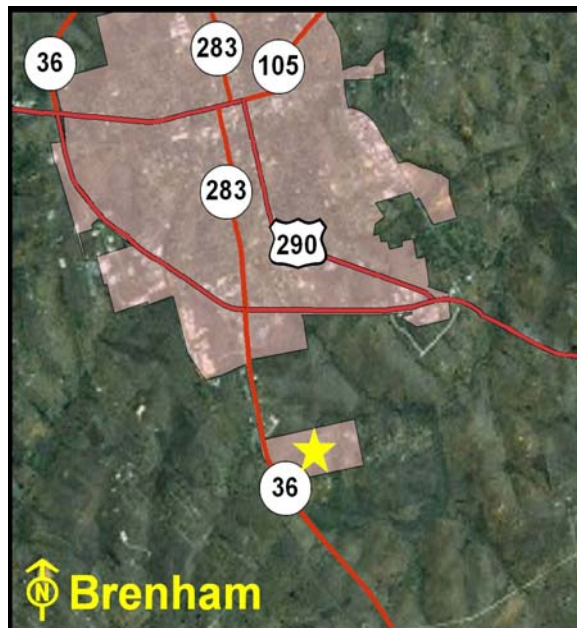
4001 SH 36 South, Brenham, Washington County, Texas

**Legal Description:**

Volume 300, Page 82, Washington County Deed Records

**Encumbrances**

Physical: None



Location Map

**Acres:** ..... 198.27

**Sen. Dist.:**.....18 **Rep. Dist.:**.....13 **FAR:**.....0.04

**Bldgs:**.....26 **Bldg Sq Ft** ..... 356,491 sq.ft.

**% in Floodplain:** .....3% **Slope:**.....Level

**Frontage:**.....SH 36, Anderson Ln

**Zoning:** .....Commercial

**Utilities:** .....Electricity, Gas, Telephone, Wastewater, Water

**Surrounding Uses:** .....Agricultural, Residential, Commercial, Industrial

**Current Use:** .....State Supported Living Center

**Agency Projected Use:** .....State Supported Living Center

The Texas Health and Human Services Commission utilizes this site as a state supported living center. Located on SH 36 South in Brenham, the site is improved with 26 buildings, five portable buildings, a water tower, security lighting, barb wire fencing, and asphalt parking. The surrounding land uses include agricultural, residential, industrial, and commercial developments.

**Recommendation:**

*Retain for continued agency operations.*

## Texas Health and Human Services Commission

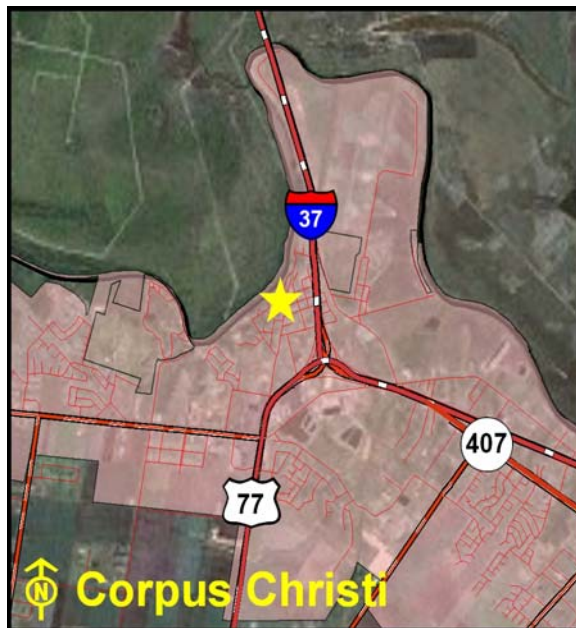
## Corpus Christi Calallen Group Home

**Location:**

5021 Calallen Drive, Corpus Christi, Nueces County,  
Texas

**Legal Description:**

Volume 2265, Page 757, Nueces County Deed  
Records



Location Map

**Encumbrances**

Physical: None

Acres: ..... 0.53

Sen. Dist.:.....20 Rep. Dist.:.....34 FAR:.....0.12

Bldgs:.....1 Bldg Sq Ft .....2,708 sq.ft.

% in Floodplain: .....0% Slope:.....Level

Frontage:.....Calallen Drive, Mountain Trail

Zoning: .....Residential

Utilities: .....Electricity, Gas, Telephone, Wastewater, Water

Surrounding Uses: .....Residential, Vacant

Current Use: .....Group Home

Agency Projected Use: .....Group Home

The Texas Health and Human Services Commission utilizes this site as a group home to provide residential services. Located on Calallen Drive in northwest Corpus Christi, the site is improved with a single-story building, a detached garage, chain-link fencing, and concrete parking. The surrounding land uses include vacant land and residential developments.

**Recommendation:**

*Retain for continued agency operations.*



## Texas Health and Human Services Commission

## Corpus Christi Castle Ridge Group Home

**Location:**

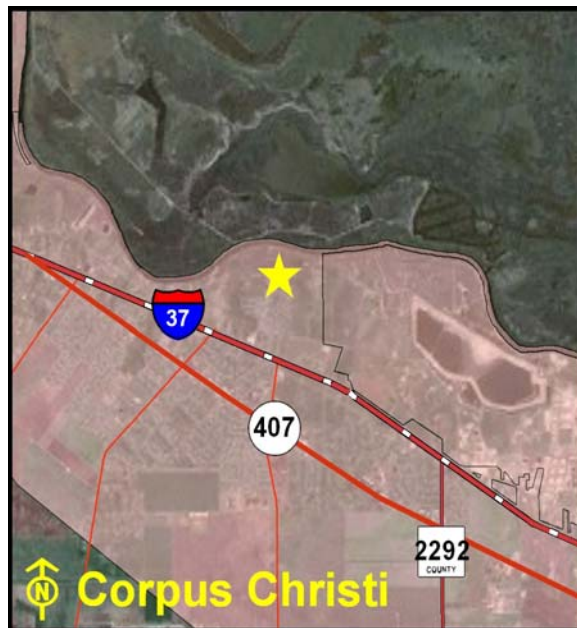
4013 Castle Ridge Drive, Corpus Christi, Nueces County, Texas

**Legal Description:**

Volume 2256, Page 811, Nueces County Deed Records

**Encumbrances**

Physical: Floodplain



Location Map

Acres: ..... 0.91

Sen. Dist.:.....20 Rep. Dist.:.....34 FAR:.....0.09

Bldgs:.....2 Bldg Sq Ft ..... 3,692 sq.ft.

% in Floodplain: .....100% Slope:.....Level

Frontage: .....Castle Ridge Drive

Zoning: .....Residential

Utilities: .....Electricity, Gas, Telephone, Wastewater, Water

Surrounding Uses: .....Residential, Recreational

Current Use: .....Group Home

Agency Projected Use: .....Group Home

The Texas Health and Human Services Commission utilizes this site as a group home to provide residential services. Located north of IH-37 on Castle Ridge Drive in Corpus Christi, the site is improved with a single-story building, a detached garage, and a concrete driveway. The surrounding land uses include residential developments and an undeveloped park.

**Recommendation:**

*Retain for continued agency operations.*

## Texas Health and Human Services Commission

## Corpus Christi State Supported Living Center

**Location:**

902 Airport Road, Corpus Christi, Nueces County, Texas

**Legal Description:**

Volume 1069, Page 28, Nueces County Deed Records



Location Map

**Encumbrances**

Physical: None

**Acres:** ..... 103.97

**Sen. Dist.:**.....20 **Rep. Dist.:**.....34 **FAR:**.....0.06

**Bldgs:**.....30 **Bldg Sq Ft** ..... 268,007 sq.ft.

**% in Floodplain:** .....2% **Slope:**.....Level

**Frontage:**.....Airport Road, Morgan Avenue

**Zoning:** .....Residential

**Utilities:** .....Electricity, Gas, Telephone, Wastewater, Water

**Surrounding Uses:** .....Residential, Recreational, Governmental, Commercial

**Current Use:** .....State Supported Living Center

**Agency Projected Use:** .....State Supported Living Center

The Texas Health and Human Services Commission utilizes this site as a state supported living center. Located at the corner of Airport Road and Morgan Avenue in Corpus Christi, the site is improved with 30 buildings, exterior lighting, chain-link fencing, and asphalt parking. The surrounding land uses include recreational, governmental, commercial, and residential developments. There is a reversion clause that calls for the return of the property to the City of Corpus Christi if not utilized as a supported living center.

**Recommendation:**

*Retain for continued agency operations.*

## Texas Health and Human Services Commission

## Denton State Supported Living Center

**Location:**

3980 State School Road, Denton, Denton County,  
Texas

**Legal Description:**

Volume 435, Page 12, Denton County Deed Records

**Encumbrances**

Physical: None



Location Map

**Acres:** ..... 187.72

**Sen. Dist.:**.....12 **Rep. Dist.:**.....64 **FAR:**.....0.06

**Bldgs:**.....58 **Bldg Sq Ft** .....488,505 sq.ft.

**% in Floodplain:** .....10% **Slope:** .....Moderate

**Frontage:** .....State School Road

**Zoning:** .....Agriculture

**Utilities:** .....Electricity, Gas, Telephone, Wastewater, Water

**Surrounding Uses:** .....Residential, Commercial

**Current Use:** .....State Supported Living Center

**Agency Projected Use:** .....State Supported Living Center

The Texas Health and Human Services Commission utilizes this site as a state supported living center. Located on the north side of State School Road in Denton, the site is improved with 58 buildings, exterior lighting, perimeter fencing, and asphalt parking. The surrounding land uses are primarily residential and commercial developments.

**Recommendation:**

*Retain for continued agency operations.*

## Texas Health and Human Services Commission

## El Paso State Supported Living Center

**Location:**

6700 Delta Drive, El Paso, El Paso County, Texas

**Legal Description:**

Volume 380, Page 701, El Paso County Deed Records



Location Map

**Encumbrances**

Physical: None

Acres: .....20.00

Sen. Dist.:.....29 Rep. Dist.:.....76 FAR:.....0.14

Bldgs:.....16 Bldg Sq Ft ..... 119,652 sq.ft.

% in Floodplain: .....0% Slope:.....Level

Frontage: .....Delta Drive

Zoning: .....Residential

Utilities: .....Electricity, Gas, Telephone, Wastewater, Water

Surrounding Uses: .....Governmental, Commercial, Residential, Recreational

Current Use: .....State Supported Living Center

Agency Projected Use: .....State Supported Living Center

The Texas Health and Human Services Commission utilizes this site as a state supported living center. Located on Delta Drive in east El Paso, the site is improved with 16 buildings, security lighting, asphalt parking, and perimeter fencing. The surrounding land uses include recreational, governmental, residential, and commercial developments. A deed reversion clause requires the property to be used for public purposes, specifically construction and operation of a human development center.

**Recommendation:***Retain for continued agency operations.*



## Texas Health and Human Services Commission

Health Department Headquarters  
and Moreton Office Building**Location:**

1100 West 49th Street, Austin, Travis County, Texas

**Legal Description:**

Volume 9365, Page 312, Travis County Deed Records



Location Map

**Encumbrances**

Physical: None

Acres: ..... 22.68

Sen. Dist.:.....14 Rep. Dist.:.....49 FAR:.....0.63

Bldgs:.....15 Bldg Sq Ft ..... 622,394 sq.ft.

% in Floodplain: .....0% Slope:.....Level

Frontage:.....49th Street, Grover Avenue

Zoning: .....Unzoned

Utilities: .....Electricity, Gas, Telephone, Wastewater, Water

Surrounding Uses: .....Residential, Church, Governmental, Industrial

Current Use: .....State Offices and Laboratory

Agency Projected Use: .....State Offices and Laboratory

The Texas Health and Human Services Commission utilizes this site for state offices and a laboratory complex. Located at the northwest corner of West 49th Street and Sunshine Drive in north-central Austin, the site is improved with 15 office and laboratory buildings, exterior lighting, chain-link fencing, and asphalt parking. The surrounding land uses include a church, industrial, governmental, and residential developments.

**Recommendation:***Retain for continued agency operations.*



## Texas Health and Human Services Commission

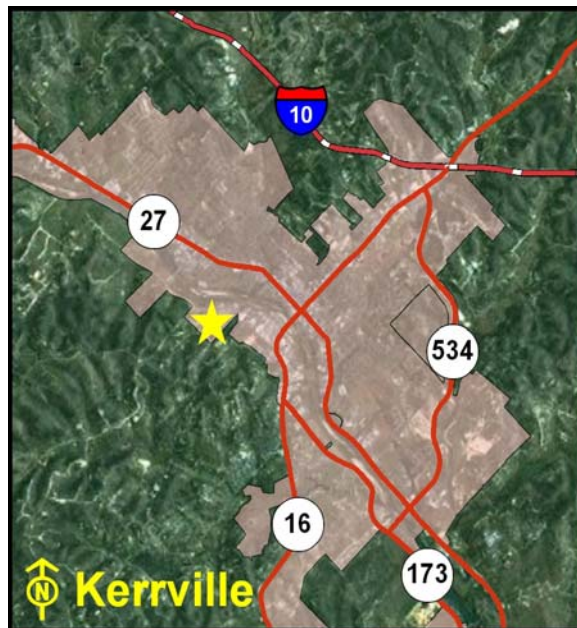
## Kerrville State Hospital

**Location:**

721 Thompson Drive, Kerrville, Kerr County, Texas

**Legal Description:**

Volume 60, Page 388, Kerr County Deed Records

**Encumbrances****Physical:** Floodplain

Location Map

**Acres:** ..... 118.81**Sen. Dist.:**.....24 **Rep. Dist.:**.....53 **FAR:**.....0.08**Bldgs:**.....41 **Bldg Sq Ft** ..... 397,670 sq.ft.**% in Floodplain:** .....5% **Slope:** .....Moderate**Frontage:**.....Thompson Drive, Sheppard-Rees Road**Zoning:** .....Residential**Utilities:** .....Electricity, Gas, Telephone, Wastewater, Water**Surrounding Uses:** .....Residential, Commercial, Medical, Office**Current Use:** .....State Hospital**Agency Projected Use:** .....State Hospital

The Texas Health and Human Services Commission utilizes this site as a state hospital. Located on Thompson Drive in west Kerrville, it is improved with 41 buildings, chain-link fencing, and asphalt parking. The surrounding land uses include residential, commercial, medical, and office developments.

**Recommendation:***Retain for continued agency operations.*

## Texas Health and Human Services Commission

## Limestone County Habilitation Center

**Location:**

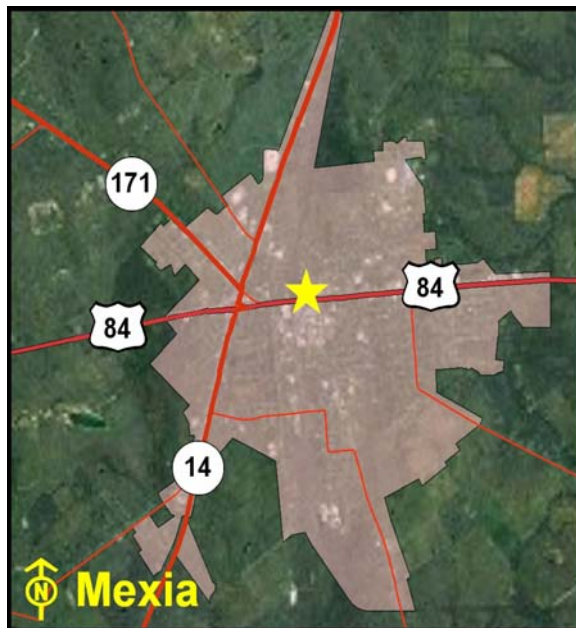
200 East Rusk Street, Mexia, Limestone County,  
Texas

**Legal Description:**

Volume 851, Page 144, Limestone County Deed  
Records

**Encumbrances**

Physical: None



Location Map

**Acres:** .....0.37

**Sen. Dist.:** .....5 **Rep. Dist.:** ....12 **FAR:** .....0.16

**Bldgs:** .....1 **Bldg Sq Ft** ..... 17,250 sq.ft.

**% in Floodplain:** .....0% **Slope:** .....Level

**Frontage:** .....East Rusk Street, Sherman Street

**Zoning:** .....Unzoned

**Utilities:** .....Electricity, Gas, Telephone, Wastewater, Water

**Surrounding Uses:** .....Residential, Commercial

**Current Use:** .....State Habitation Center

**Agency Projected Use:** .....State Habitation Center

The Texas Health and Human Services Commission utilizes this site as a state habilitation center for rehabilitation and therapy. Located on the northwest corner of East Rusk Street and Sherman Street in Mexia, the site is improved with a one-story building, perimeter fencing, and a concrete driveway. The surrounding land uses include residential and commercial developments.

**Recommendation:**

*Retain for continued agency operations.*

## Texas Health and Human Services Commission

## Lubbock Psychiatric Hospital

**Location:**

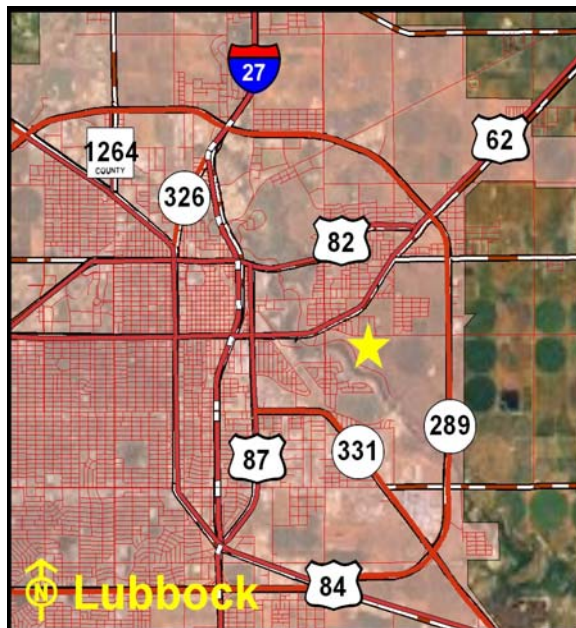
1950 Aspen Avenue, Lubbock, Lubbock County, Texas

**Legal Description:**

Volume 4359, Page 48, Lubbock County Deed Records

**Encumbrances**

Physical: None



Location Map

**Acres:** ..... 8.00

**Sen. Dist.:**.....28 **Rep. Dist.:**.....84 **FAR:**.....0.09

**Bldgs:**.....2 **Bldg Sq Ft** ..... 30,600 sq.ft.

**% in Floodplain:** .....0% **Slope:**.....Level

**Frontage:** .....Aspen Avenue

**Zoning:** .....Residential

**Utilities:** .....Electricity, Gas, Telephone, Wastewater, Water

**Surrounding Uses:** .....Agricultural, Recreational

**Current Use:** .....Psychiatric Hospital

**Agency Projected Use:** .....Psychiatric Hospital

The Texas Health and Human Services Commission utilizes this site as a psychiatric hospital. Located on Aspen Avenue on the eastern edge of Lubbock, the site is improved with two buildings, a basketball court, and asphalt parking. The surrounding land uses include farmland and a city park.

**Recommendation:**

*Retain for continued agency operations.*

## Texas Health and Human Services Commission

## Lubbock State Supported Living Center

**Location:**

3401 North University Avenue, Lubbock, Lubbock County, Texas

**Legal Description:**

Volume 1054, Page 165, Volume 1205, Page 25, Lubbock County Deed Records

**Encumbrances**

Physical: None



Location Map

**Acres:** .....226.14

**Sen. Dist.:**.....28 **Rep. Dist.:**.....84 **FAR:**.....0.03

**Bldgs:**.....40 **Bldg Sq Ft** .....317,982 sq.ft.

**% in Floodplain:** .....0% **Slope:** .....Moderate

**Frontage:** .....University Avenue

**Zoning:** .....Residential

**Utilities:** .....Electricity, Gas, Telephone, Wastewater, Water

**Surrounding Uses:** .....Agricultural, Recreational, Industrial, Residential

**Current Use:** .....State Supported Living Center

**Agency Projected Use:** .....State Supported Living Center

The Texas Health and Human Services Commission utilizes this site as a state supported living center. Located along North University Avenue in north Lubbock, the site is improved with 40 buildings and asphalt parking. The surrounding land uses include agricultural, industrial, recreational, and residential developments. A reversion clause in the deed calls for the return of the property to the City of Lubbock, if not utilized for mental health services.

**Recommendation:**

*Retain for continued agency operations.*



## Texas Health and Human Services Commission

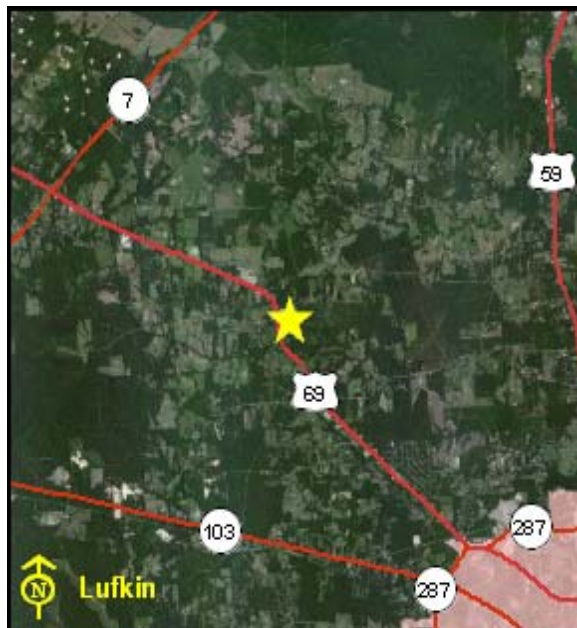
## Lufkin State Supported Living Center

**Location:**

US HWY 69, Lufkin, Angelina County, Texas

**Legal Description:**Volume 297, Page 432, Volume 293, Page 237,  
Volume 299, Page 233, Volume 337, Page 668,  
Angelina County Deed Records**Encumbrances**

Physical: None



Location Map

**Acres:** ..... 159.21**Sen. Dist.:** .....3 **Rep. Dist.:** .....57 **FAR:** .....0.05**Bldgs:** .....67 **Bldg Sq Ft** ..... 359,556 sq.ft.**% in Floodplain:** .....0% **Slope:** .....Level**Frontage:** .....US HWY 69, CR 77**Zoning:** .....Unzoned**Utilities:** .....Electricity, Gas, Telephone, Wastewater, Water**Surrounding Uses:** .....Residential, Commercial, Vacant**Current Use:** .....State Supported Living Center**Agency Projected Use:** .....State Supported Living Center

The Texas Health and Human Services Commission utilizes this site as a state supported living center and retreat. Located along U.S. Highway 69 in Lufkin, it is improved with 67 buildings, security lighting, perimeter chain-link fencing, and asphalt parking. The surrounding land uses include vacant land, residential, and commercial developments.

**Recommendation:***Retain for continued agency operations.*



## Texas Health and Human Services Commission

## Mexia State Supported Living Center

**Location:**

FM 2838, Mexia, Limestone County, Texas

**Legal Description:**

Volume 297, Page 151, Limestone County Deed Records

**Encumbrances**

Physical: None



Location Map

**Acres:** .....841.61**Sen. Dist.:**.....5 **Rep. Dist.:** ....12 **FAR:** .....0.02**Bldgs:**.....132 **Bldg Sq Ft** ..... 637,091 sq.ft.**% in Floodplain:** .....8% **Slope:**.....Level**Frontage:** .....FM 2838, FM 634**Zoning:** .....Unzoned**Utilities:** .....Electricity, Gas, Telephone, Wastewater, Water, Water Well**Surrounding Uses:** .....Agricultural, Residential**Current Use:** .....State Supported Living Center**Agency Projected Use:** .....Agricultural Development/State Supported Living Center

The Texas Health and Human Services Commission utilizes 196 acres of this property as a state supported living center. Located on the northwest side of FM 2838 at the west end of FM 634 in Mexia, the property is improved with 132 buildings, security lighting, and asphalt parking. The surrounding land uses include agricultural and residential developments. Approximately 645 acres of the southwest portion of the property has been leased for agricultural use.

**Recommendation:***Retain for continued agency operations.*

## Texas Health and Human Services Commission

## North Texas State Hospital - Vernon Campus

**Location:**

4730 College Drive, Vernon, Wilbarger County, Texas

**Legal Description:**

Volume 176, Page 491, Wilbarger County Deed Records

**Encumbrances**

Physical: None



Location Map

**Acres:** ..... 65.32**Sen. Dist.:**.....28 **Rep. Dist.:**.....68 **FAR:**..... 0.11**Bldgs:**.....32 **Bldg Sq Ft** ..... 320,683 sq.ft.**% in Floodplain:** .....100% **Slope:**.....Level**Frontage:** .....US 70/College Drive**Zoning:** .....Civic**Utilities:** .....Electricity, Gas, Telephone, Wastewater, Water**Surrounding Uses:** .....Residential, Agricultural**Current Use:** .....State Hospital**Agency Projected Use:** .....State Hospital

The Texas Health and Human Services Commission utilizes this site as a state hospital for the housing and care of impaired clients. Located on College Drive (U.S. Hwy 70) in the southwest area of Vernon, the site is improved with 32 buildings, security fencing, exterior lighting, and asphalt parking. The surrounding land uses include agricultural and residential developments.

**Recommendation:***Retain for continued agency operations.*

## Texas Health and Human Services Commission

## North Texas State Hospital - Wichita Falls Campus

**Location:**

6515 Old Lake Road (Kemp Boulevard), Wichita Falls,  
Wichita County, Texas

**Legal Description:**

John A Scott Srvy A-301, A-295 Dry Land, and Cattle  
Co Srvy A-6173, Wichita County Deed Records



Location Map

**Encumbrances**

**Physical:** Cemetery on the Property

**Acres:** ..... 272.40

**Sen. Dist.:**.....30 **Rep. Dist.:**.....69 **FAR:**.....0.05

**Bldgs:**.....60 **Bldg Sq Ft** ..... 644,015 sq.ft.

**% in Floodplain:** .....10% **Slope:**.....Level

**Frontage:** .....Lake Road, Kemp Boulevard

**Zoning:** .....Mixed-Use

**Utilities:** .....Electricity, Gas, Telephone, Wastewater, Water

**Surrounding Uses:** .....Agricultural, Residential

**Current Use:** .....State Hospital

**Agency Projected Use:** .....State Hospital

The Texas Health and Human Services Commission utilizes this site as a state hospital for the housing and care of impaired clients. Located on Old Lake Road and Kemp Boulevard in Wichita Falls, the site is improved with 60 buildings, exterior lighting, perimeter fencing, and asphalt parking. The surrounding land uses include agricultural and residential developments.

**Recommendation:**

*Retain for continued agency operations.*

## Texas Health and Human Services Commission

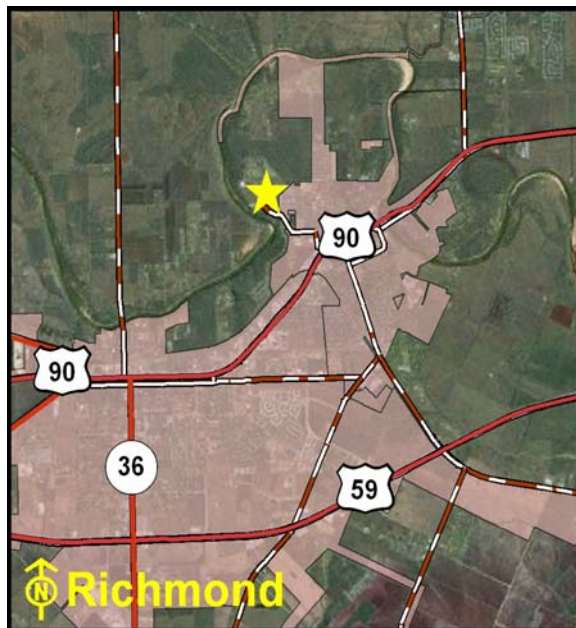
## Richmond State Supported Living Center

**Location:**

2100 Preston Street (FM 3155), Richmond, Fort Bend County, Texas

**Legal Description:**

Volume 434, Page 586, Fort Bend County Deed Records



Location Map

**Encumbrances**

**Physical:** Floodplain

**Acres:** ..... 216.79

**Sen. Dist.:**.....18 **Rep. Dist.:** ....85 **FAR:** .....0.05

**Bldgs:**.....43 **Bldg Sq Ft** ..... 510,752 sq.ft.

**% in Floodplain:** .....15% **Slope:** .....Level

**Frontage:** .....Preston Street (FM 3155)

**Zoning:** .....Unzoned

**Utilities:** .....Electricity, Gas, Telephone, Wastewater, Water

**Surrounding Uses:** .....Residential, Commercial, Agricultural, Vacant

**Current Use:** .....State Supported Living Center

**Agency Projected Use:** .....State Supported Living Center

The Texas Health and Human Services Commission utilizes this property on the east side of SH 36 at the end of Preston Road in northwest Richmond as a state supported living center. The site is improved with 43 buildings on 120.40 acres (Parcel A). An additional 96.39 acres (Parcel B) are unimproved excess land 30 acres of which is in the 100-year flood zone and not likely to be developed. The remaining 66.39 acres are in the upland buffer area. The surrounding land uses include vacant lots, agricultural, residential, and commercial developments.

**Recommendation:**

*Retain for continued agency operations.*



## Texas Health and Human Services Commission

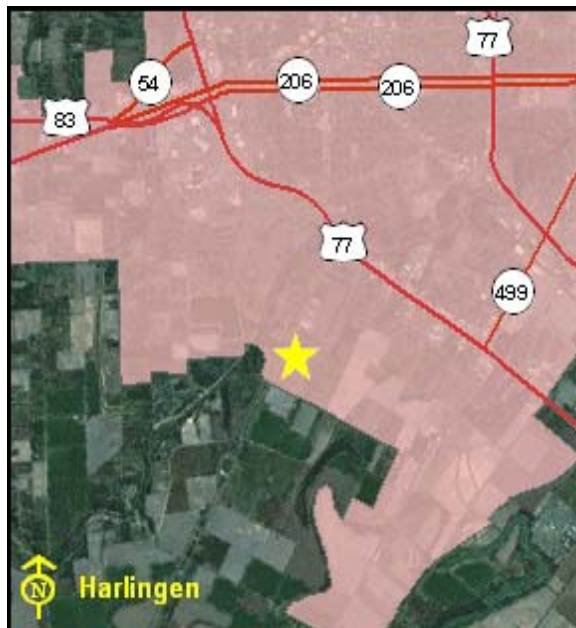
## Rio Grande State Center

**Location:**

500 South Rangerville Road, Harlingen, Cameron County, Texas

**Legal Description:**

Volume 563, Page 236, Cameron County Deed Records



Location Map

**Encumbrances**

Physical: None

Acres: ..... 78.18

Sen. Dist.:.....27 Rep. Dist.:.....38 FAR:..... 0.06

Bldgs:.....18 Bldg Sq Ft ..... 211,956 sq.ft.

% in Floodplain: .....0% Slope:.....Level

Frontage: .....South Rangerville Road

Zoning: .....Residential

Utilities: .....Electricity, Gas, Telephone, Wastewater, Water

Surrounding Uses: .....Residential, School, Commercial, Governmental

Current Use: .....State Center

Agency Projected Use: .....State Center

The Texas Health and Human Services Commission utilizes this site as a state medical facility. Located on Rangerville Road (FM 1479), the property is improved with 18 buildings, chain-link fencing, security lights, and asphalt parking. The surrounding land uses include residential, school, commercial, and governmental developments.

**Recommendation:**

*Retain for continued agency operations.*



## Texas Health and Human Services Commission

## Rusk State Hospital

**Location:**

805 North Dickinson Drive (US HWY 69), Rusk,  
Cherokee County, Texas

**Legal Description:**

Volume 139, Page 426, Cherokee County Deed  
Records

**Encumbrances**

**Physical:** Landfill on the Property



Location Map

**Acres:** ..... 622.90

**Sen. Dist.:** .....3 **Rep. Dist.:** .....11 **FAR:** .....0.03

**Bldgs:** .....89 **Bldg Sq Ft** .....766,117 sq.ft.

**% in Floodplain:** .....0% **Slope:** .....Moderate

**Frontage:** Dickinson Drive (US HWY 69), Loop 343

**Zoning:** .....Mixed-Use

**Utilities:** .....Electricity, Gas, Telephone, Wastewater, Water Well

**Surrounding Uses:** .....Woodlands, Residential, Commercial, Governmental

**Current Use:** .....State Hospital/Recreational Center

**Agency Projected Use:** .....State Hospital/Recreational Center

The Texas Health and Human Services Commission utilizes this site as a state hospital and retreat. Located on North Dickinson Drive (US HWY 69) in Rusk, the site is improved with 89 buildings, security lighting, perimeter fencing, and asphalt parking. The surrounding land uses include woodlands, commercial, government, and residential developments.

**Recommendation:**

*Retain for continued agency operations.*

## Texas Health and Human Services Commission

## San Antonio State Hospital &amp; San Antonio SSLC

**Location:**

6711 South New Braunfels, San Antonio, Bexar County, Texas

**Legal Description:**

Volume 63, Page 317, Bexar County Deed Records

**Encumbrances**

**Physical:** Cemetery on the Property



Location Map

**Acres:** .....349.10

**Sen. Dist.:**.....19 **Rep. Dist.:**...119 **FAR:**.....0.07

**Bldgs:**.....98 **Bldg Sq Ft**.....1,039,914 sq.ft.

**% in Floodplain:** .....6% **Slope:** .....Moderate

**Frontage:**.....SE Military, South New Braunfels

**Zoning:** .....Residential

**Utilities:** .....Electricity, Gas, Telephone, Wastewater, Water

**Surrounding Uses:** .....Residential, Governmental, Military, Commercial

**Current Use:** .....State Hospital/Supported Living Center

**Agency Projected Use:** .....State Hospital/Supported Living Center

The Texas Health and Human Services Commission utilizes this site as a hospital, cemetery, state supported living center, and center for infectious diseases. Located in southeastern San Antonio, bounded by South Presa Avenue, Southeast Military Drive, and South New Braunfels Road, the site is improved with 98 buildings, chain-link fencing, and asphalt parking. The surrounding land uses include military, governmental, commercial, and residential developments.

**Recommendation:**

*Retain for continued agency operations.*

## Texas Health and Human Services Commission

## Terrell State Hospital

**Location:**

1200 Brin Street, Terrell, Kaufman County, Texas

**Legal Description:**

Vol 33, Pg 246, Vol 32, Pg 416, Vol 320, Pg 432, Vol 200, Pg 638, Vol 220, Pg 638, Vol 339, Pg 227, Vol 343, Pg 358, Vol 469, Pg 577, Kaufman County Deed Records

**Encumbrances****Physical:** Cemetery on the Property

Location Map

**Acres:** .....150.04**Sen. Dist.:**.....2 **Rep. Dist.:**.....4 **FAR:**.....0.12**Bldgs:**.....60 **Bldg Sq Ft** ..... 769,244 sq.ft.**% in Floodplain:** .....15% **Slope:** .....Moderate**Frontage:**.....Brin Street, Rose Street**Zoning:** .....Residential**Utilities:** .....Electricity, Gas, Telephone, Wastewater, Water**Surrounding Uses:** .....Residential, Vacant**Current Use:** .....State Hospital/Cemetery**Agency Projected Use:** .....State Hospital/Cemetery

The Texas Health and Human Services Commission utilizes this site as a state hospital and cemetery. Located on Brin Street in Terrell, the site is improved with 60 buildings - 25 of those buildings are identified as a safety hazard and recommended to be demolished when funds become available. The surrounding land uses include vacant land and residential developments.

**Recommendation:***Retain for continued agency operations.*

## Texas Health and Human Services Commission

## Vernon Paradise Group Home

**Location:**

4200 Paradise Street, Vernon, Wilbarger County,  
Texas

**Legal Description:**

Volume 315, Page 12, Wilbarger County Deed  
Records

**Encumbrances**

Physical: None



Location Map

**Acres:** ..... 0.61

**Sen. Dist.:**.....28 **Rep. Dist.:**.....68 **FAR:**.....0.14

**Bldgs:**.....1 **Bldg Sq Ft** ..... 3,648 sq.ft.

**% in Floodplain:** .....0% **Slope:**.....Level

**Frontage:** .....Paradise Street

**Zoning:** .....Residential

**Utilities:** .....Electricity, Gas, Telephone, Wastewater, Water

**Surrounding Uses:** .....Residential, Church, School, Vacant

**Current Use:** .....Group Home

**Agency Projected Use:** .....Group Home

The Texas Health and Human Services Commission utilizes this site as a group home. Located on Paradise Street in Vernon, the site is improved with a one-story brick home and a concrete driveway. The surrounding land uses include vacant lots, a school, a church, and residential developments.

**Recommendation:**

*Retain for continued agency operations.*



## Texas Health and Human Services Commission

## Vernon Vocational &amp; Educational Center

**Location:**

1727 Yamparika Street, Vernon, Wilbarger County, Texas

**Legal Description:**

Volume 429, Page 952, Wilbarger County Deed Records



Location Map

**Encumbrances**

Physical: None

Acres: ..... 0.30

Sen. Dist.:.....28 Rep. Dist.:.....68 FAR:.....0.47

Bldgs:.....1 Bldg Sq Ft ..... 6,149 sq.ft.

% in Floodplain: .....0% Slope:.....Level

Frontage: .....Yamparika Street, Main Street

Zoning: .....Commercial

Utilities: .....Electricity, Gas, Telephone, Wastewater, Water

Surrounding Uses: .....Residential

Current Use: .....Vacant

Agency Projected Use: .....Vocational Center

The Texas Health and Human Services Commission is planning to refurbish this currently vacant site. Located on Yamparika Street in Vernon, the site is improved with a single-story building, exterior security lighting, and asphalt parking. The surrounding land uses include primarily residential developments.

**Recommendation:**

*Retain for continued agency operations.*



## Texas Health and Human Services Commission

## Victory Field Correctional Academy

**Location:**

8407 FM 433, Vernon, Wilbarger County, Texas

**Legal Description:**

Volume 44, Page 132, Wilbarger County Deed Records

**Encumbrances**

Physical: None



Location Map

**Acres:** .....195.00**Sen. Dist.:**.....28**Rep. Dist.:**.....68**FAR:**.....0.02**Bldgs:**.....20 **Bldg Sq Ft** ..... 166,009 sq.ft.**% in Floodplain:** .....0% **Slope:**.....Level**Frontage:** .....FM 433**Zoning:** .....Unzoned**Utilities:** .....Electricity, Gas, Telephone, Water Well, Septic Tank**Surrounding Uses:** .....Agricultural, Residential**Current Use:** .....Vacant**Agency Projected Use:** .....State Correctional Academy

The Texas Health and Human Services Commission recently received this site from The Texas Juvenile Justice Department. Located along FM 433 in Vernon, the site is improved with 20 buildings, chain-link fencing, and asphalt parking. The surrounding land uses include agricultural and residential developments. HHSC plans to renovate the facility for a future use. A reversion clause in the deed requires return of the property to the grantor if not utilized as a state health facility.

**Recommendation:***Retain for continued agency operations.*

## Texas Health and Human Services Commission

## Waco Center For Youth

**Location:**

3501 North 19th Street, Waco, McLennan County, Texas

**Legal Description:**

Volume 321, Page 358, McLennan County Deed Records

**Encumbrances**

Physical: None



Location Map

**Acres:** ..... 48.79

**Sen. Dist.:**.....22 **Rep. Dist.:** .....56 **FAR:** .....0.07

**Bldgs:**.....44 **Bldg Sq Ft** ..... 150,946 sq.ft.

**% in Floodplain:** .....0% **Slope:** .....Level

**Frontage:**.....19th St, Park Lake Drive

**Zoning:** .....Residential

**Utilities:** .....Electricity, Gas, Telephone, Wastewater, Water

**Surrounding Uses:** .....Residential, Commercial

**Current Use:** .....Youth Center

**Agency Projected Use:** .....Youth Center

The Texas Health and Human Services Commission utilizes this site as a youth center. Located along North 19th Street and Park Lake Drive in Waco, the site is improved with 44 buildings, campus lighting, perimeter fencing, and asphalt parking. The surrounding land uses include residential and commercial developments. A McDonald's Restaurant franchise leases 0.85 acres of the property.

**Recommendation:**

*Retain for continued agency operations.*