

# Texas General Land Office

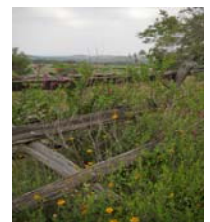
George P. Bush, Commissioner



## **REAL PROPERTY EVALUATION REPORTS**

**Texas Department of Criminal Justice  
Texas Facilities Commission  
Finance Commission of Texas  
Texas Juvenile Justice Department**

**September 2016**





TEXAS GENERAL LAND OFFICE  
GEORGE P. BUSH, COMMISSIONER

September 1, 2016

The Office of the Governor

The Office of the  
Lieutenant Governor

The Office of the  
Speaker of the House of Representatives

Members, Texas Senate and House of Representatives

Pursuant to Texas Natural Resources Code, Sections 31.157, et seq., enclosed is the 2016 State Real Property Evaluation Report of the Asset Management Program Area, Texas General Land Office, regarding real property assets of the Texas Facilities Commission, Texas Finance Commission, Texas Department of Criminal Justice and the Texas Juvenile Justice Department.

This report provides market analyses and other pertinent information to assist legislators in making land-use decisions.

Information and recommendations herein are based on property utilization at the time of the inspection.

If you have any questions or would like additional information, please contact Shaun Seale at (512) 463-5174 or [shaun.seale@glo.texas.gov](mailto:shaun.seale@glo.texas.gov).

Sincerely,

GEORGE P. BUSH  
Commissioner, General Land Office



I. Overview.....	2
II. Evaluation Reports.....	3
A. Texas Department of Criminal Justice- Agency Summary.....	4
1. Sites Recommended for Sale or Lease	
Dawson Unit.....	10
Estelle Unit.....	12
Marlin Hospital .....	14
2. Sites Retained	
Allred Unit.....	16
B. Moore Unit.....	17
Bartlett Unit.....	18
Boyd/Teague Unit.....	19
Bradshaw Unit.....	20
Bridgeport Unit.....	21
Briscoe Unit.....	22
C. Moore/Cole Units.....	23
Chase Field-Garza East and West Units.....	24
Clemens Unit.....	25
Clements/Neal Units.....	26
Cleveland Unit.....	27
Coffield, Beto, Gurney, Michael, and Powledge Units.....	28
Connally Unit.....	29
Cotulla Unit.....	30
Crain/Hilltop/Murray/Woodman Units.....	31
Dalhart Unit.....	32
Daniel Unit.....	33
Darrington Unit.....	34
Diboll Unit.....	35
Dominguez Unit.....	36
Duncan Unit.....	37
Eastham Unit.....	38
Ellis Unit.....	39
Estelle Unit.....	40
Estes Unit.....	41
Ferguson Unit.....	42
Fort Stockton Unit.....	43
Glossbrenner Unit.....	44



Goodman Unit.....	45
Goree Unit.....	46
Halbert Unit.....	47
Hamilton Unit.....	48
Havins Unit.....	49
Hightower/Henley/Plane Units.....	50
Hobby Unit.....	51
Hodge/ Skyview Units.....	52
Houston Regional Office.....	53
Hughes Unit.....	54
Huntsville Walls Unit.....	55
Hutchins Unit.....	56
Jester I, III, IV Vance Units .....	57
Johnston Unit.....	58
Jordan Unit.....	59
Kegans Unit.....	60
Kyle Unit.....	61
Lewis Unit.....	62
Lindsey Unit.....	63
Lockhart Unit.....	64
Lychner Unit.....	65
Lynaugh Unit.....	66
Marlin Unit.....	67
McConnell Unit.....	68
Montford Unit.....	69
Mountain View Unit.....	70
Ney Unit.....	71
Pack/Luther Units.....	72
Polunsky Unit.....	73
Ramsey/Stringfellow/Terrell Units.....	74
Region V Headquarters.....	75
Roach Unit.....	76
Robertson/Middleton Units.....	77
Rudd Unit.....	78
San Saba Unit.....	79
Sanchez Unit.....	80
Sayle Unit.....	81
Scott Unit.....	82
Segovia/Lopez Units.....	83
Smith Unit.....	84
Snyder Distribution Center.....	85



South Texas Unit.....	86
Stevenson Unit.....	87
Stiles/LeBlanc/Gist Units.....	88
TDCJ Administrative Headquarters.....	89
Telford Unit.....	90
Torres Unit.....	91
Travis County Unit.....	92
Tulia Unit.....	93
Wallace/Ware Units.....	94
Wheeler/Formby Units.....	95
Willacy Unit.....	96
Wynne/Byrd Diagnostic/Holliday Units.....	97
Young Unit.....	98
B. Texas Facilities Commission - Agency Summary.....	99
1. Sites Retained	
Austin Bolm Road Warehouse.....	105
Capitol Childcare Facility and Parking Lot 8.....	106
Capitol Visitor's Parking Garage.....	107
Central Services Building.....	108
E.O. Thompson Building and Parking Lot 15.....	109
El Paso State Office Building and Parking Garage.....	110
Elias Ramirez State Office Building.....	111
Fort Worth State Office Building.....	112
Fort Worth Surplus Property Warehouse #1.....	113
G.J. Sutton Complex.....	114
Human Services Warehouse.....	115
J. H. Winters Human Services Complex (East).....	116
J. H. Winters Human Services Complex (West).....	117
James E. Rudder Building.....	118
John H. Reagan Office Building.....	119
Lorenzo deZavala Archives and Library Building.....	120
Lyndon B. Johnson Building and Parking Lot Q.....	121
Natural Resources Center.....	122
Park 35 State Office Building A Site.....	123
Park 35 State Office Building B & C Site.....	124



Park 35 State Office Building D and E Site.....	125
Parking Garage A.....	126
Parking Garage C.....	127
Parking Garage E.....	128
Parking Garage F, Central Services Annex, & Parking Lot 18...	129
Parking Garage R.....	130
Parking Garages B and G, and Parking Lot 22.....	131
Parking Lot 12.....	132
Parking Lot 14 and Old Bakery Site .....	133
Parking Lot 19.....	134
Parking Lot 25.....	135
Parking Lot 27.....	136
Parking Lot 7.....	134
Promontory Point Building - OAG Site.....	138
Robert E. Johnson Office Building and Parking Garage P.....	139
Sam Houston Building.....	140
San Antonio Surplus Warehouse #2.....	141
State Board of Insurance Warehouse.....	142
State Insurance Annex Building.....	143
State Insurance Building.....	144
Stephen F. Austin Building.....	145
Supreme Court, Tom C. Clark, Price Daniel Sr. Bldg Complex..	146
Thomas Jefferson Rusk Building.....	147
Tyler State Office Building.....	148
Waco State Office Building.....	149
Wheless Lane Laboratory.....	150
William B. Travis Building.....	151
William P. Clements Building.....	152
William P. Hobby Building and Parking Garage N.....	153
C. Finance Commission of Texas - Agency Summary.....	154
1. Sites Retained	
Finance Commission Building.....	157
D. Texas Juvenile Justice Department - Agency Summary.....	161
1. Sites Recommended for Sale or Lease	
Corsicana Residential Treatment Center.....	166



2. Sites Retained

Evins Regional Juvenile Center.....	169
Gainesville State School.....	170
Giddings State School.....	171
McLennan County Juvenile Correctional Facility.....	172
Parrie Haynes Trust - Milam County.....	173
Parrie Haynes Trust Property.....	174
Parrie Haynes Trust Ranch.....	175
Ron Jackson State Juvenile Correctional Facility.....	176
Sheffield Boot Camp.....	177
Wende Trust Property.....	178

III. About the Report.....	180
----------------------------	-----

# **OVERVIEW**





## AN OVERVIEW

### CONTENTS

This report contains evaluations of state real property for the following agency:

- ◆ Texas Department of Criminal Justice
- ◆ Texas Facilities Commission
- ◆ Finance Commission of Texas
- ◆ Texas Juvenile Justice Department

### Agency Summaries

Each report begins with an agency summary containing the following:

*Background/Authorities:*

The agency's enabling legislation, operational mission, and real property management procedure.

*Real Property Assets:*

The agency's real property holdings including function, location, size, physical and legal characteristics.

### GLO Analysis and Recommendations

Following the summary is an analysis of salient real property factors and the General Land Office's (GLO) recommendations regarding future disposition of the property. Recommendations for sale or lease of the properties are based on the following:

- ◆ an examination of appraisal data
- ◆ legal and physical limitations
- ◆ need for the property by other state agencies
- ◆ market conditions; and/or
- ◆ other factors influencing the value of the property to the state

### Texas Facilities Commission Recommendations

Before publication, real property evaluation reports are submitted to the Texas Facilities Commission (TFC) to determine whether any reviewed properties are needed by other state agencies. Any TFC staff comments are included in the agency's summary section of the report and are attached to the specific site analysis.

# **EVALUATION REPORTS**

TEXAS DEPARTMENT OF  
CRIMINAL JUSTICE  
AGENCY SUMMARY



## Texas Department of Criminal Justice

### **Agency Summary**

#### **Background/Authorities**

The Texas Department of Criminal Justice (TDCJ) was formed in 1989 when the Legislature combined the Texas Board of Pardons and Paroles, the Adult Probation Commission, and the Department of Corrections.

The mission of the TDCJ is to provide public safety, promote positive change in offender behavior, reintegrate offenders into society and assist victims of crime.

In accordance with the Government Code, TDCJ, under the supervision of the Board of Criminal Justice, may lease state-owned lands and grant easements. Proceeds from these leases and easements are deposited into the appropriate special account of the State Treasury.

HB 1979 (74<sup>th</sup> Legislature, 1995) provided authorization to the Board to sell state-owned real property. The Texas General Land Office (GLO) is responsible for marketing identified properties on behalf of the Board in accordance with procedures in Sec. 31.158 (c) of the Texas Natural Resources Code.

#### **Real Property Assets**

TDCJ owns 86 properties ranging from 0.54 acres to 20,527.74 acres. TDCJ currently utilizes over 122,382 acres, both owned and leased, for agricultural operations. Many TDCJ units are located in proximity to suburban centers including the greater Houston area. TDCJ has determined that the minimum acceptable size for a prison unit is 300 acres.

#### **GLO Recommendations**

The GLO recommends disposing of three TDCJ properties; the Dawson Unit, a portion of the Estelle Unit and the Marlin Hospital.



### TDCJ Properties to be Recommended

GLO ID#	Site Name	Current Use	Highest and Best Use	Total Acres	Total Market Value	Acres Recommended	Value of Acres Recommended
2312	Dawson Unit	State Prison Facility	State Prison Facility	0.91	\$4,050,000.00 - \$5,130,000.00	0.91	\$4,050,000.00 - \$5,130,000.00
702	Estelle Unit	State Prison Facility/ Agricultural	State Prison Facility/ Agricultural	5,458.73	TBD	33.26	TBD
2598	Marlin Hospital	Prison Hospital	Prison Hospital	8.00	TBD	8.00	TBD
<b>Total:</b>				<b>5,467.64</b>		<b>42.17</b>	

### TDCJ Properties to be Retained

GLO ID#	Site Name	Current Use	Highest and Best Use	Total Acres
2214	Allred Unit	State Prison Facility/ Agricultural	State Prison Facility/ Agricultural	320.00
2322	B. Moore Unit	State Prison Facility	State Prison Facility	209.71
2314	Bartlett Unit	State Prison Facility	State Prison Facility	61.77
2056	Boyd/Teague Unit	State Prison Facility/ Agricultural	State Prison Facility/ Agricultural	733.65
2320	Bradshaw Unit	State Jail Facility	State Jail Facility	99.74
2350	Bridgeport Unit	State Prison Facility	State Prison Facility	38.29
2057	Briscoe Unit	Correctional Facility	Correctional Facility/ Agricultural	425.90
2207	C. Moore/Cole Units	State Prison Facilities/ Agricultural	State Prison Facilities/ Agricultural	698.41
2318	Chase Field-Garza East and West Units	Correctional Facilities	Correctional Facilities/ Agricultural	303.55
717	Clemens Unit	State Prison Facility/ Agricultural	State Prison Facility/ Agricultural	8,007.73



GLO ID#	Site Name	Current Use	Highest and Best Use	Total Acres
1996	Clements/Neal Units	State Prison Facilities/ Agricultural	State Prison Facilities/Agricultural	592.28
2349	Cleveland Unit	State Prison Facility	State Prison Facility	39.50
706	Coffield, Beto, Gurney, Michael, and Powledge Units	State Prison Facilities/ Agricultural	State Prison Facilities/Agricultural	20,527.74
2215	Connally Unit	State Prison Facility	State Prison Facility	813.35
2191	Cotulla Unit	Correctional Facility	Correctional Facility	36.00
704	Crain/Hilltop/Murray/Woodman Units	State Prison Facilities/ Agricultural	State Prison Facilities/Agricultural	1,166.44
2212	Dalhart Unit	State Prison Facility/ Agricultural	State Prison Facility/Agricultural	1,520.42
2001	Daniel Unit	State Prison Facility/ Agricultural	State Prison Facility/Agricultural	579.36
716	Darrington Unit	State Prison Facility/ Agricultural	State Prison Facility/Agricultural	6,770.13
2308	Diboll Unit	Correctional Facility	Correctional Facility	100.00
2309	Dominguez Unit	State Prison Facility	State Prison Facility	71.72
2188	Duncan Unit	Correctional Facility	Correctional Facility	25.00
715	Eastham Unit	State Prison Facility/ Agricultural	State Prison Facility/Agricultural	12,788.86
707	Ellis Unit	State Prison Facility/ Agricultural	State Prison Facility/Agricultural	11,426.68
702	Estelle Unit	State Prison Facility/ Agricultural	State Prison Facility/ Agricultural	5,425.47
2351	Estes Unit	State Prison Facility	State Prison Facility	40.00
714	Ferguson Unit	State Prison Facility/ Agricultural	State Prison Facility/Agricultural	4,354.74
2190	Fort Stockton Unit	State Prison Facility	State Prison Facility	25.01
2199	Glossbrenner Unit	State Prison Facility	State Prison Facility	283.33



GLO ID#	Site Name	Current Use	Highest and Best Use	Total Acres
2201	Goodman Unit	State Prison Facility/ Agricultural	State Prison Facility/ Agricultural	493.84
713	Goree Unit	State Prison Facility/ Agricultural	State Prison Facility/ Agricultural	717.47
2202	Halbert Unit	State Prison Facility/ Agricultural	State Prison Facility/ Agricultural	222.74
2209	Hamilton Unit	State Prison Facility/ Agricultural	State Prison Facility/ Agricultural	349.63
2204	Havins Unit	State Prison Facility	State Prison Facility	300.00
1997	Hightower/Henley/Plane Units	State Prison Facility	State Prison Facility	394.39
1999	Hobby Unit	State Prison Facility/Cropland	State Prison Facility/ Cropland	388.04
2003	Hodge Unit	State Prison Facility	State Prison Facility	58.04
2593	Houston Regional Office	Regional Office	Regional Office	2.49
1998	Hughes Unit	State Prison Facility/ Agricultural	State Prison Facility/ Agricultural	390.00
711	Huntsville (Walls) Unit	State Prison Facility	State Prison Facility	54.36
2310	Hutchins Unit	State Prison Facility	State Prison Facility	68.90
712	Jester I, III, IV Vance Units	State Prison Facilities/ Agricultural	State Prison Facilities/ Agricultural	914.77
2198	Johnston Unit	State Prison Facility/ Agricultural	State Prison Facility/ Agricultural	342.24
2197	Jordan Unit	State Prison Facility/ Agricultural	State Prison Facility/ Agricultural	1,211.36
2321	Kegans Unit	Correctional Facility	Correctional Facility	0.81
2354	Kyle Unit	State Prison Facility	State Prison Facility	12.20
2025	Lewis Unit	State Prison Facility/ Agricultural	State Prison Facility/ Agricultural	360.00
2316	Lindsey Unit	State Prison Facility	State Prison Facility	64.40
2313	Lockhart Unit	State Prison Facility	State Prison Facility	31.13
2323	Lychner Unit	Correctional Facility	Correctional Facility	63.97



GLO ID#	Site Name	Current Use	Highest and Best Use	Total Acres
2211	Lynaugh Unit	State Prison Facility	State Prison Facility	1,312.43
2586	Marlin Unit	State Prison Facility	State Prison Facility	25.00
2059	McConnell Unit	Correctional Facility	Correctional Facility/ Agriculture	298.85
2194	Montford Unit	State Prison Facility/ Agricultural	State Prison Facility/ Agricultural	1,303.50
705	Mountain View Unit	State Prison Facility/ Agricultural	State Prison Facility/ Agricultural	96.44
2196	Ney Unit	State Prison Facility	State Prison Facility	24.44
703	Pack/Luther Units	State Prison Facilities/ Agricultural	State Prison Facilities/ Agricultural	7,002.00
2195	Polunsky Unit	State Prison Facility	State Prison Facility	472.25
710	Ramsey/Stringfellow/ Terrell Units	State Prison Facilities/ Agricultural	State Prison Facilities/ Agricultural	14,643.95
2319	Region V Headquarters	Regional Headquarters	Commercial	0.60
2054	Roach Unit	State Prison Facility/ Agricultural	State Prison Facility/ Agricultural	1,651.00
2058	Robertson/Middleton Units	State Prison Facilities/ Agricultural	State Prison Facilities/ Agricultural	402.23
2205	Rudd Unit	State Prison Facility/ Agricultural	State Prison Facility/ Agricultural	303.85
2587	San Saba Unit	State Prison Facility	State Prison Facility	25.00
2311	Sanchez Unit	State Prison Facility	State Prison Facility	102.00
2206	Sayle Unit	State Prison Facility/ Agricultural	State Prison Facility/ Agricultural	402.36
709	Scott Unit	State Prison Facility/ Agricultural	State Prison Facility/ Agricultural	5,766.41
2208	Segovia/Lopez Units	Correctional Facility	Correctional Facility	300.00
2187	Smith Unit	State Prison Facility	State Prison Facility	562.58
2000	Snyder Distribution Center	State Warehouse Distribution Center	State Warehouse Distribution Center	20.00
2499	South Texas Unit	State Correctional Facility	State Correctional Facility	0.54
2213	Stevenson Unit	State Prison Facility/ Agricultural	State Prison Facility/ Agricultural	464.03
2055	Stiles/LeBlanc/Gist Units	State Prison Facilities/ Agricultural	State Prison Facilities/ Agricultural	775.55
2002	TDCJ Administrative Head- quarters	State Prison Office Facility	State Prison Office Facility	72.55





GLO ID#	Site Name	Current Use	Highest and Best Use	Total Acres
2216	Telford Unit	State Prison Facility/ Agricultural	State Prison Facility/ Agricultural	1,205.79
2203	Torres Unit	State Prison Facility/ Agricultural	State Prison Facility/ Agricultural	350.00
2253	Travis County Unit	State Prison Facility	State Prison Facility	95.04
2192	Tulia Unit	State Prison Facility	State Prison Facility	25.00
2210	Wallace/Ware Units	State Prison Facilities/ Agricultural	State Prison Facilities/ Agricultural	546.51
2200	Wheeler/Formby Units	State Prison Facilities/ Agricultural	State Prison Facilities/ Agricultural	601.63
2315	Willacy Unit	State Prison Facility	State Prison Facility	100.00
708	Wynne/Byrd (Diagnostic)/ Holliday Units	State Prison Facilities/ Agricultural	State Prison Facilities/ Agricultural	1,401.78
2317	Young Unit	State Correctional Facility	State Correctional Facility	42.79
<b>Total:</b>				<b>124,321.75</b>

TEXAS DEPARTMENT OF  
CRIMINAL JUSTICE  
PROPERTIES  
RECOMMENDED FOR  
SALE OR LEASE

---

GLO ID#: 2312

## Dawson Unit

### Location:

106 West Commerce Street, Dallas, Dallas  
County, Texas

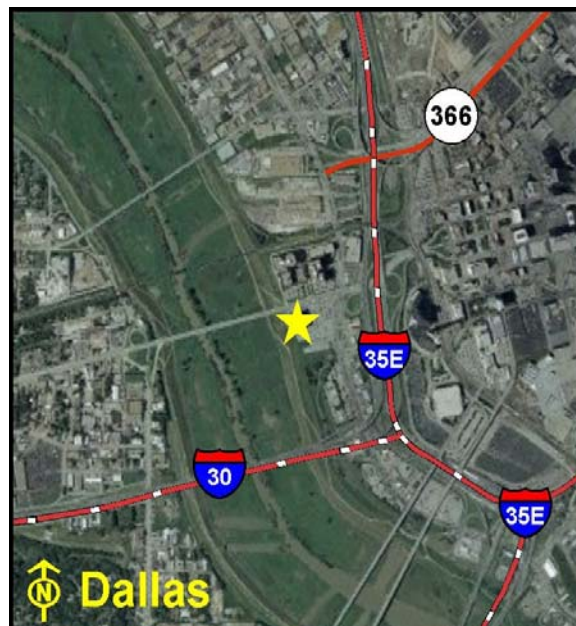
### Legal Description:

Volume 94141, Page 01899, Dallas County Official  
Records

### Encumbrances

Physical: None

Legal:    *Deed Restrictions:* None  
          *Easements:* Utility



Location Map

Acres:..... 0.91

Bldgs.: .....1    Bldg Sq Ft   234,000 sq. ft.

Sen. Dist.: .....23 Rep. Dist.: ...103 FAR:... 5.92

Value of Recommended Acres: .....

% in Floodplain:..... 0% Slope: .....Level

Zoning: .....Industrial

Frontage: .....Commerce St

Utilities: .....Electricity, Gas, Telephone, Wastewater, Water

Surrounding Uses: .....Governmental, Commercial, Retail, Industrial

Current Use: .....Vacant

Highest and Best Use: .....Speculative Development

Agency Projected Use: .....TBD

#### Analysis

This vacant Texas Department of Criminal Justice property is located west of the central business district of Dallas on West Commerce Street. The site, which previously served as a jail, is improved with one 10 - story building which holds 2,200 beds. The facility has concrete parking. The surrounding land use includes governmental, retail, commercial and industrial development. The market value range of the property is \$4,050,000.00 - \$5,130,000.00. The highest and best use is speculative development.

The GLO recommends disposing of the underutilized property.

#### GLO Recommendation:

Dispose of this underutilized property.

*Site Map*



GLO ID#: 702

## Estelle Unit

### Location:

FM 980 and FM 3478, Huntsville, Walker County, Texas

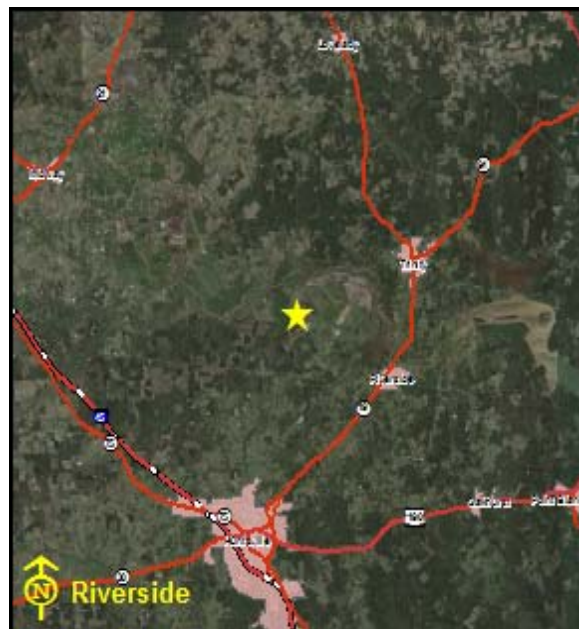
### Legal Description:

Volume 392, Page 114, Walker County Deed Records

### Encumbrances

Physical: Floodplain

Legal: Deed Restrictions: None  
Easements: Utility, ROW



Location Map

Acres:.....5,458.73

Bldgs.: .....75 Bldg Sq Ft 916,270 sq. ft.

Sen. Dist.: .....5 Rep. Dist.: .....18 FAR:.. 0.01

Value of Recommended Acres: .....

% in Floodplain:..... 75% Slope: .....Level

Zoning: .....Unzoned

Frontage: .....FM 980, FM 3478

Utilities: .....Electricity, Gas, Telephone, Wastewater, Water

Surrounding Uses: .....Agricultural, Residential, Governmental

Current Use: .....State Prison Facility/Agricultural

Highest and Best Use: .....State Prison Facility/Agricultural

Agency Projected Use: .....State Prison Facility/Agricultural

### **Analysis**

The Texas Department of Criminal Justice utilizes this site as agricultural production and a prison facility. The site consists of two parcels, Parcel A (4,562.74 acres) and Parcel B (895.99 acres). It is located north of Huntsville on the corner of FM 980 and FM 3478. The site is improved with 75 buildings, interior fencing and security lighting, exterior high security fencing and lighting, recreational areas, a sewage treatment plant and concrete parking. Parcel A encompasses the prison unit and most of the agricultural production. Parcel B is utilized for cattle grazing, timber production and recreational hunting.

The GLO recommends the sale of 33.26 unused acres of the Estelle Unit. The appraisal was not available at the time of this report. The appraisal is forthcoming.

#### **GLO Recommendation:**

The GLO recommends disposing 33.26 acres of the underutilized property.

*Site Map*



GLO ID#: 2598

## Marlin Hospital

### Location:

1016 Ward Street, Marlin, Falls County, Texas

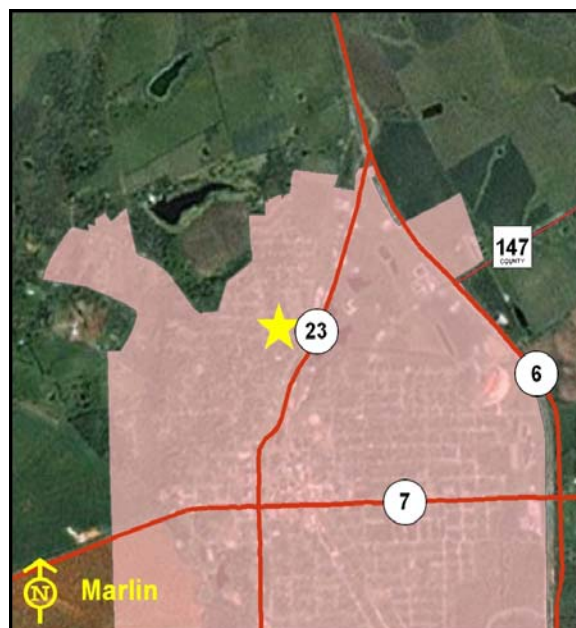
### Legal Description:

Volume 338, Page 940, Falls County Official Records

### Encumbrances

Physical: None

Legal:    *Deed Restrictions:* None  
          *Easements:* Access, Utility



Location Map

Acres:..... 8.00

Bldgs.: .....13    Bldg Sq Ft   203,945 sq. ft.

Sen. Dist.: .....22 Rep. Dist.: .....12 FAR:    ...

Value of Recommended Acres: .....

% in Floodplain:..... 0% Slope: .....Level

Zoning: .....Unzoned

Frontage: .....Ward Street, Virginia Avenue

Utilities: .....Electricity, Gas, Wastewater

Surrounding Uses: .....Residential

Current Use: .....Vacant

Highest and Best Use: .....Hospital

Agency Projected Use: .....TBD



**Analysis**

This vacant Texas Department of Criminal Justice property is located on Ward Street, in Marlin. The site is improved with thirteen buildings, including the main hospital, which is five stories. The surrounding land use includes residential.

The GLO recommends disposing this underutilized property. The appraisal was not available at the time of this report. The appraisal is forthcoming.

**GLO Recommendation:**

Dispose of this underutilized property.

*Site Map*





TEXAS DEPARTMENT OF  
CRIMINAL JUSTICE  
PROPERTIES TO BE  
RETAINED

## Texas General Land Office

## Allred Unit

**Location:**

2101 FM 369 North, Iowa Park, Wichita County,  
Texas

**Legal Description:**

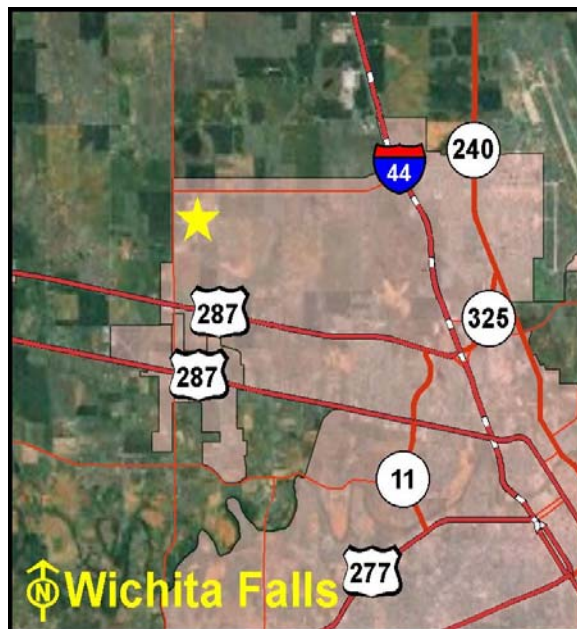
Volume 1621, Page 34, Wichita County Deed Records

**Encumbrances**

**Physical:** None

**Legal:** *Deed Restrictions:* Mineral Rights Reserved

*Easements:* Utility



Location Map

**Acres:** ..... 320.00

**Bldgs.:** .....23 **Bldg Sq Ft** .....1,026,012 sq.ft.

**Sen. Dist.:**.....30 **Rep. Dist.:**.....69 **FAR:**..... 0.07

**% in Floodplain:**..... 0% **Slope:**.....Level

**Zoning:** .....Unzoned

**Frontage:** .....FM 369 N

**Utilities:** .....Electricity, Gas, Telephone, Wastewater, Water

**Surrounding Uses:** .....Commercial, Agricultural

**Current Use:** .....State Prison Facility/Agricultural

**Highest and Best Use:** .....State Prison Facility/Agricultural

**Agency Projected Use:** .....State Prison Facility/Agricultural

The Texas Department of Criminal Justice owns and utilizes this site as a prison facility and for agricultural production. It is located on FM 369 North in Wichita Falls. The site is improved with 23 buildings, security lighting and cameras, chain-link fencing and concrete parking. The surrounding land use includes agricultural development and a drag race track.

**Recommendation:**

***Retain for continued agency operations.***

## Texas General Land Office

## B. Moore Unit

**Location:**

8500 North FM 3053, Overton, Rusk County, Texas

**Legal Description:**

Volume 2087, Page 227, Rusk County Official Records

**Encumbrances****Physical:** Floodplain**Legal:** *Deed Restrictions:* Restricted Use*Easements:* Utility, ROW

Location Map

**Acres:** ..... 209.71**Bldgs.:** .....2 **Bldg Sq Ft** ..... 92,059 sq.ft.**Sen. Dist.:**.....1 **Rep. Dist.:**.....11 **FAR:**..... 0.01**% in Floodplain:**..... 10% **Slope:** .....Moderate**Zoning:** .....Unzoned**Frontage:** .....FM 3053**Utilities:** .....Electricity, Telephone, Water, Septic Tank**Surrounding Uses:** .....Woodlands, Residential, School**Current Use:** .....State Prison Facility**Highest and Best Use:** .....State Prison Facility**Agency Projected Use:** .....State Prison Facility

The Texas Department of Criminal Justice utilizes this site as a prison facility. It is located on FM 3053 north of Overton. The site is improved with two buildings, perimeter and interior fencing, security lighting and paved parking. The surrounding land uses include a Texas A&M Research Center, timber production and residential development. There are easements for installing, repairing, maintaining, altering and operating utilities on or across the property.

**Recommendation:*****Retain for continued agency operations.***

## Texas General Land Office

## Bartlett Unit

**Location:**

1018 Arnold Drive (CR 342), Bartlett, Williamson County, Texas

**Legal Description:**

Volume 2591, Page 437, Williamson County Official Records

**Encumbrances**

Physical: None

Legal: Deed Restrictions: None

Easements: Utility, Drainage



Location Map

Acres: ..... 61.77

Bldgs.: .....10 Bldg Sq Ft ..... 139,736 sq.ft.

Sen. Dist.:.....5 Rep. Dist.:.....20 FAR:..... 0.05

% in Floodplain:..... 0% Slope:.....Level

Zoning: .....Unzoned

Frontage: .....Arnold Dr (CR 342)

Utilities: .....Electricity, Gas, Telephone, Wastewater, Water

Surrounding Uses: .....Agricultural, Residential

Current Use: .....State Prison Facility

Highest and Best Use: .....State Prison Facility

Agency Projected Use: .....State Prison Facility

The Texas Department of Criminal Justice utilizes this site as a state prison facility. It is located in West Bartlett on Arnold Drive, also known as CR 342. The site is improved with 10 permanent buildings, a greenhouse, two storage buildings, paved parking, security fencing and security lighting. The surrounding land uses include agricultural and residential development.

**Recommendation:**

***Retain for continued agency operations.***

## Texas General Land Office

## Boyd/Teague Unit

**Location:**

Hwy 84, Fairfield, Freestone County, Texas

**Legal Description:**

J.T. Faulkenbury Svy ,A-233; A. Anglin Svy, A-46; I. Caradine Svy, A-116; R.P. Kelly Svy, A-351; and E.L. Hale Svy, A-295, Freestone County Official Records

**Encumbrances****Physical:** Floodplain**Legal:** *Deed Restrictions:* Mineral Rights Reserved*Easements:* Utility

Location Map

**Acres:** ..... 733.65**Bldgs.:** .....18 **Bldg Sq Ft** ..... 271,850 sq.ft.**Sen. Dist.:**.....5 **Rep. Dist.:**.....8 **FAR:**..... 0.01**% in Floodplain:**..... 2% **Slope:** .....Moderate**Zoning:** .....Unzoned**Frontage:** .....US Hwy 84, Spur 113**Utilities:** .....Electricity, Gas, Telephone, Wastewater, Water**Surrounding Uses:** .....Ranching, Residential, Agricultural**Current Use:** .....State Prison Facility/Agricultural**Highest and Best Use:** .....State Prison Facility/Agricultural**Agency Projected Use:** .....State Prison Facility/Agricultural

The Texas Department of Criminal Justice utilizes this site as agricultural production and a prison facility. It is located northeast of Teague, on US Highway 84 and Spur 113. The site is improved with 18 buildings, interior/exterior security fencing, recreational areas, security lighting and concrete parking. The surrounding land use includes ranching, residential and agricultural development. About 2% of the site lies in the floodplain.

**Recommendation:*****Retain for continued agency operations.***



## Texas General Land Office

## Bradshaw Unit

**Location:**

3900 West Loop 571 North, Henderson, Rusk County, Texas

**Legal Description:**

Volume 2083, Page 482, Rusk County Official Records

**Encumbrances**

**Physical:** None

**Legal:** *Deed Restrictions:* Restricted Use

*Easements:* Utility



Location Map

**Acres:** ..... 99.74

**Bldgs.:** .....14 **Bldg Sq Ft** ..... 225,738 sq.ft.

**Sen. Dist.:**.....1 **Rep. Dist.:**.....9 **FAR:**..... 0.05

**% in Floodplain:**..... 0% **Slope:**.....Level

**Zoning:** .....Unzoned

**Frontage:** .....West Loop 571 North

**Utilities:** .....Electricity, Telephone, Wastewater, Water

**Surrounding Uses:** .....Agricultural, Woodlands, Industrial

**Current Use:** .....State Jail Facility

**Highest and Best Use:** .....State Jail Facility

**Agency Projected Use:** .....State Jail Facility

The Texas Department of Criminal Justice utilizes this site as a jail facility. It is located outside of the city limits of Henderson on West Loop 571 North. The site is improved with 14 buildings, four recreational yards, chain-link fencing, security lighting and concrete parking. The surrounding land uses include agricultural and industrial development.

**Recommendation:**

***Retain for continued agency operations.***

## Texas General Land Office

## Bridgeport Unit

**Location:**

4000 North 10th Street, Bridgeport, Wise County,  
Texas

**Legal Description:**

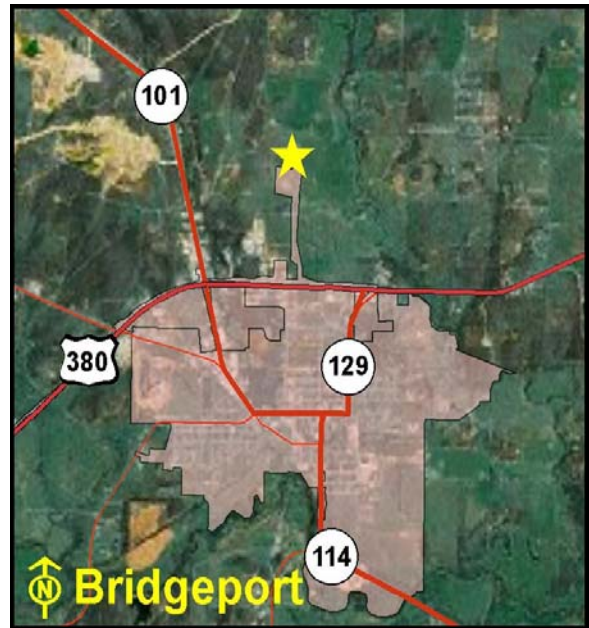
Volume 799, Page 788, Wise County Official Records

**Encumbrances**

**Physical:** None

**Legal:** *Deed Restrictions:* Restricted Use

*Easements:* Utility



Location Map

**Acres:** ..... 38.29

**Bldgs.:** .....7 **Bldg Sq Ft** ..... 99,313 sq.ft.

**Sen. Dist.:**.....30 **Rep. Dist.:**.....61 **FAR:**..... 0.06

**% in Floodplain:**..... 0% **Slope:**.....Level

**Zoning:** .....Residential

**Frontage:** .....N. 10th St, U.S. HWY 380

**Utilities:** .....Electricity, Telephone, Wastewater, Water

**Surrounding Uses:** .....Rangeland, Agricultural

**Current Use:** .....State Prison Facility

**Highest and Best Use:** .....State Prison Facility

**Agency Projected Use:** .....State Prison Facility

The Texas Department of Criminal Justice utilizes this site as a prison facility. It is located on North 10th Street in Bridgeport. The site is improved with seven buildings, chain-link perimeter fencing, security lighting and concrete parking. The surrounding land use includes rangeland and agricultural development.

**Recommendation:**

***Retain for continued agency operations.***

## Texas General Land Office

## Briscoe Unit

**Location:**

State Highway 85 West, Dilley, Frio County, Texas

**Legal Description:**

Volume 307, Page 10, Frio County Deed Records

**Encumbrances****Physical:** None**Legal:** *Deed Restrictions:* None*Easements:* Utility

Location Map

**Acres:** ..... 425.90**Sen. Dist.:**.....19 **Rep. Dist.:**.....80 **FAR:**..... 0.02**Bldgs.:** .....24 **Bldg Sq Ft** ..... 294,944 sq.ft.**% in Floodplain:**..... 0% **Slope:**.....Level**Zoning:** .....Unzoned**Frontage:** .....SH 85, IH 35**Utilities:** .....Electricity, Gas, Telephone, Wastewater, Water**Surrounding Uses:** .....Agricultural, Commercial, Industrial**Current Use:** .....Correctional Facility**Highest and Best Use:** .....Correctional Facility/Agricultural**Agency Projected Use:** .....Correctional Facility/Agricultural

The Texas Department of Criminal Justice owns and utilizes this site as a prison facility and for agricultural production. It is located on State Highway 85 west of the City of Dilley and IH 35. The site is improved with 24 buildings, chain-link fencing, security lighting and concrete parking. The surrounding land use includes agricultural, commercial and light industrial developments.

**Recommendation:*****Retain for continued agency operations.***



## Texas General Land Office

## C. Moore/Cole Units

**Location:**

1700 N. FM 87 & 3801 Silo Road, Bonham, Fannin County, Texas

**Legal Description:**

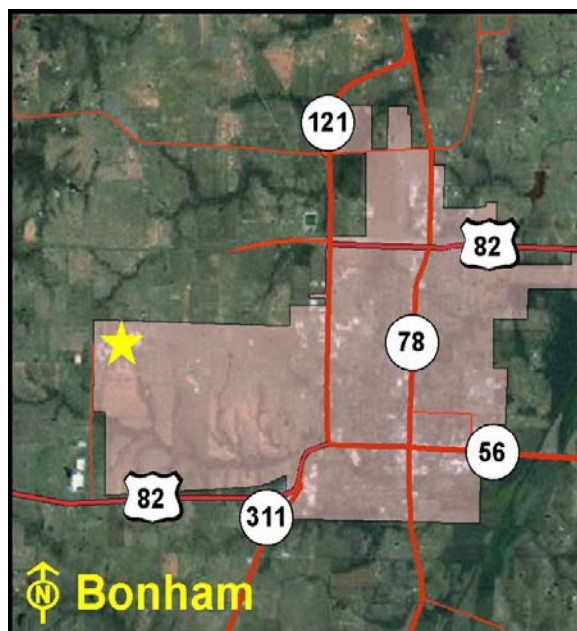
Volume 773, Page 1057, Fannin County Official Records

**Encumbrances**

**Physical:** None

**Legal:** *Deed Restrictions:* Mineral Rights Reserved

*Easements:* Pipeline, Utility



Location Map

**Acres:** ..... 698.41

**Bldgs.:** .....19 **Bldg Sq Ft** ..... 310,307 sq.ft.

**Sen. Dist.:**.....2 **Rep. Dist.:**.....62 **FAR:**..... 0.01

**% in Floodplain:**..... 0% **Slope:**.....Level

**Zoning:** .....Industrial

**Frontage:** .....FM 87, Silo Rd

**Utilities:** .....Electricity, Gas, Telephone, Wastewater, Water

**Surrounding Uses:** .....Agricultural, Residential, Recreational

**Current Use:** .....State Prison Facilities/Agricultural

**Highest and Best Use:** .....State Prison Facilities/Agricultural

**Agency Projected Use:** .....State Prison Facilities/Agricultural

The Texas Department of Criminal Justice utilizes these sites as prison facilities and for agricultural production. One site is located on North FM 87 and the other on Silo Road in Bonham. The sites together are improved with 19 buildings, exterior security fencing, recreational yards and shelter, security lighting and concrete parking. The surrounding land uses include agricultural, residential and recreational development.

**Recommendation:**

***Retain for continued agency operations.***

## Texas General Land Office

## Chase Field-Garza East and West Units

**Location:**

SH 202 East (Part of Old Chase Field Naval Air Station), Beeville, Bee County, Texas

**Legal Description:**

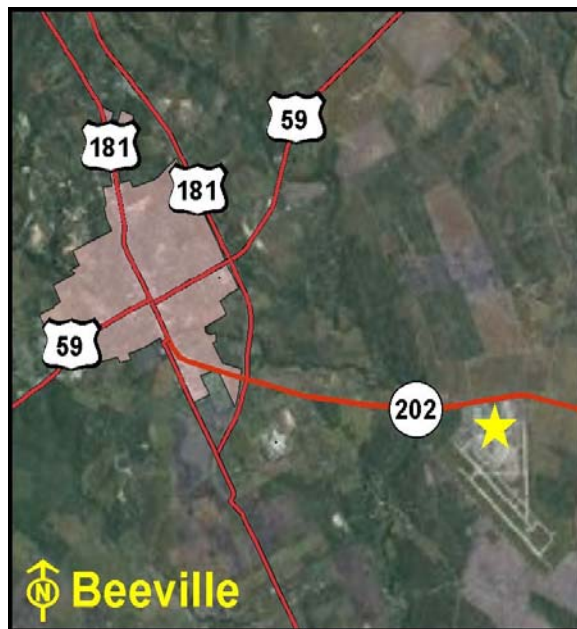
Volume 512, Page 404, Bee County Official Records

**Encumbrances**

**Physical:** None

**Legal:** *Deed Restrictions:* Reversion Clause

*Easements:* Utility



Location Map

**Acres:** ..... 303.55

**Bldgs.:** .....101 **Bldg Sq Ft** .....1,199,987 sq.ft.

**Sen. Dist.:**.....21 **Rep. Dist.:**.....43 **FAR:**..... 0.10

**% in Floodplain:**..... 0% **Slope:** .....Moderate

**Zoning:** .....Unzoned

**Frontage:** .....S.H. 202

**Utilities:** .....Electricity, Telephone, Water, Water Well

**Surrounding Uses:** .....Agricultural, Residential, Governmental

**Current Use:** .....Correctional Facilities

**Highest and Best Use:** .....Correctional Facilities/Agricultural

**Agency Projected Use:** .....Correctional Facilities

The Texas Department of Criminal Justice utilizes these sites for regional offices and correctional facilities. They are located on State Highway 202 East, southeast of the city limits of Beeville. The sites are improved with 101 buildings, paved parking, chain link fencing and security lighting. The surrounding land uses include governmental, agricultural and residential development. The existing reversion clause calls for the return of the property to the federal government if not utilized as correctional facilities.

**Recommendation:**

***Retain for continued agency operations. This property reverts back to the federal government if no longer utilized by the agency.***

## Texas General Land Office

## Clemens Unit

**Location:**

SH 36, FM 2611, FM 2004, CR 400, and CR 310, Lake Jackson, Brazoria County, Texas

**Legal Description:**

Volume 50, Page 625, Brazoria County Official Records

**Encumbrances**

**Physical:** Floodplain

**Legal:** *Deed Restrictions:* None

*Easements:* Utility, ROW



Location Map

**Acres:** .....8,007.73

**Bldgs.:** .....61 **Bldg Sq Ft** ..... 459,196 sq.ft.

**Sen. Dist.:**.....17 **Rep. Dist.:**.....25 **FAR:**..... 0.01

**% in Floodplain:**..... 25% **Slope:**.....Level

**Zoning:** .....Unzoned

**Frontage:** .....SH 36, FM 2004

**Utilities:** .....Electricity, Gas, Telephone, Wastewater, Water Well

**Surrounding Uses:** .....Agricultural, Residential

**Current Use:** .....State Prison Facility/Agricultural

**Highest and Best Use:** .....State Prison Facility/Agricultural

**Agency Projected Use:** .....State Prison Facility/Agricultural

The Texas Department of Criminal Justice utilizes this site as a prison facility and for agricultural production. The site is located on the southwest side of Lake Jackson and has five roads that cross the prison grounds dividing the tract into four distinct parcels. Parcel A (3,517.73 acres) fronts FM 2004, SH 36, and CR 400. Parcel B (2,420 acres) fronts SH 36, FM 2611, and CR 310. Parcel C (1,670 acres) fronts FM 2611. Parcel D (400 acres) fronts FM 2004 and CR 400. The entire site is improved with 61 buildings, security fencing, a waste water treatment facility, water plant, security lighting, recreational areas and concrete parking. The surrounding land uses include agricultural and residential developments.

**Recommendation:**

***Retain for continued agency operations.***

## Texas General Land Office

## Clements/Neal Units

**Location:**

9055 Spur 591 (NE 24th Street), Amarillo, Potter County, Texas

**Legal Description:**

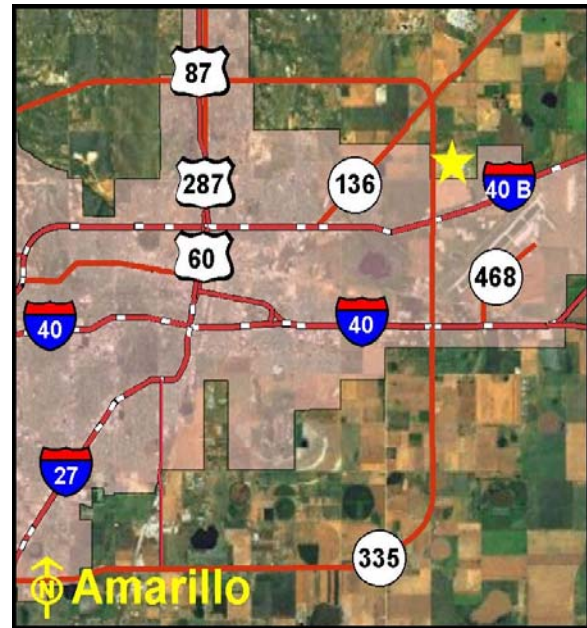
Volume 1966, Page 215, Potter County Official Records

**Encumbrances**

**Physical:** Floodplain

**Legal:** Deed Restrictions: None

Easements: Utility



Location Map

**Acres:** ..... 592.28

**Sen. Dist.:**.....31 **Rep. Dist.:**.....87 **FAR:**..... 0.06

**Bldgs.:** .....66 **Bldg Sq Ft** .....1,549,789 sq.ft.

**% in Floodplain:**..... 5% **Slope:**.....Level

**Zoning:** .....Unzoned

**Frontage:** .....Spur 591 (NE 24th St.)

**Utilities:** .....Electricity, Gas, Telephone, Wastewater, Water

**Surrounding Uses:** .....Agricultural, Rangeland, Residential, Industrial

**Current Use:** .....State Prison Facilities/Agricultural

**Highest and Best Use:** .....State Prison Facilities/Agricultural

**Agency Projected Use:** .....State Prison Facilities/Agricultural

The Texas Department of Criminal Justice utilizes these sites as prison facilities and for agricultural production. They are located on the north side of NE 24th Street (Spur 591) east of Loop 335 in Amarillo. The sites are improved with 66 buildings, interior/exterior barb wire fencing, security lighting, recreational areas, a security camera system and concrete parking. The surrounding land uses include rangeland, agricultural, residential and industrial development.

**Recommendation:**

***Retain for continued agency operations.***



## Texas General Land Office

## Cleveland Unit

**Location:**

East Fifth Street, Cleveland, Liberty County, Texas

**Legal Description:**Volume 596, Page 142, Volume 614, Page 779,  
Volume 615, Page 782, Volume 615, Page 784,  
Liberty County Official Records**Encumbrances****Physical:** Floodplain**Legal:** Deed Restrictions: None

Easements: Utility



Location Map

**Acres:** ..... 39.50**Sen. Dist.:** .....3 **Rep. Dist.:** .....18 **FAR:** ..... 0.06**Bldgs.:** .....3 **Bldg Sq Ft** ..... 106,568 sq.ft.**% in Floodplain:** ..... 5% **Slope:** .....Level**Zoning:** .....Mixed-Use**Frontage:** .....East Fifth Street**Utilities:** .....Electricity, Gas, Telephone, Wastewater, Water**Surrounding Uses:** .....Residential, Commercial, Industrial**Current Use:** .....State Prison Facility**Highest and Best Use:** .....State Prison Facility**Agency Projected Use:** .....State Prison Facility

The Texas Department of Criminal Justice utilizes this site as a prison facility. It is located on East Fifth Street in Cleveland. The site is improved with three buildings, concrete parking, security fencing and lighting. The surrounding land uses include industrial, commercial and residential development.

**Recommendation:*****Retain for continued agency operations.***

## Texas General Land Office

## Coffield, Beto, Gurney, Michael, and Powledge Units

## Location:

FM 645 (Tennessee Colony), Palestine, Anderson & Freestone County, Texas

## Legal Description:

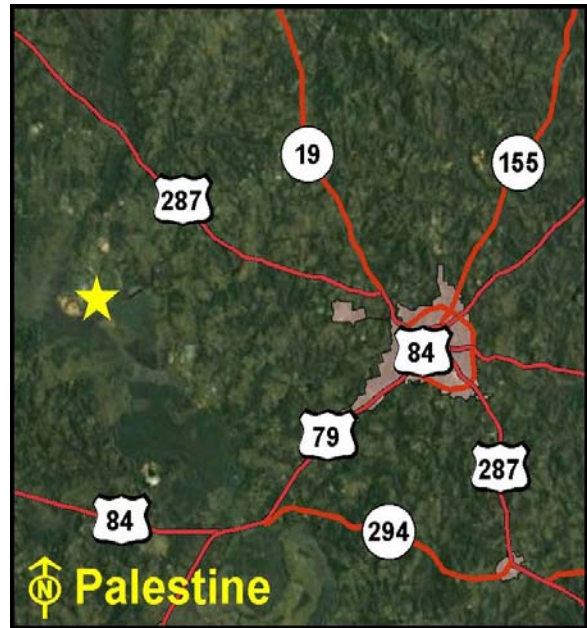
Volume 648, Page 257, Volume 951, Page 513,  
Volume 819, Page 665, Volume 716, Page 624,  
Volume 702, Page 166, Anderson County & Freestone  
County Official Records

## Encumbrances

Physical: Floodplain

Legal: Deed Restrictions: None

Easements: Utility



Location Map

Acres: ...20,527.74

Bldgs.: .....258 Bldg Sq Ft .....4,083,855 sq.ft.

Sen. Dist.:.....3 Rep. Dist.:.....8 FAR:..... 0.01

% in Floodplain:..... 70% Slope:.....Level

Zoning: .....Unzoned

Frontage: .....FM 645, FM 2054

Utilities: .....Electricity, Gas, Telephone, Wastewater, Water

Surrounding Uses: .....Agricultural, Ranching, Residential

Current Use: .....State Prison Facilities/Agricultural

Highest and Best Use: .....State Prison Facilities/Agricultural

Agency Projected Use: .....State Prison Facilities/Agricultural

The Texas Department of Criminal Justice utilizes these sites as prison facilities and for agricultural production. They are located in the Tennessee Colony near FM 645 west of Palestine. The five prison units are improved with 258 buildings, a sewer treatment plant, chain-link barbed wire fencing, recreational areas, security lighting and concrete parking. The surrounding land uses include ranching, and agricultural and residential developments.

## Recommendation:

***Retain for continued agency operations.***

## Texas General Land Office

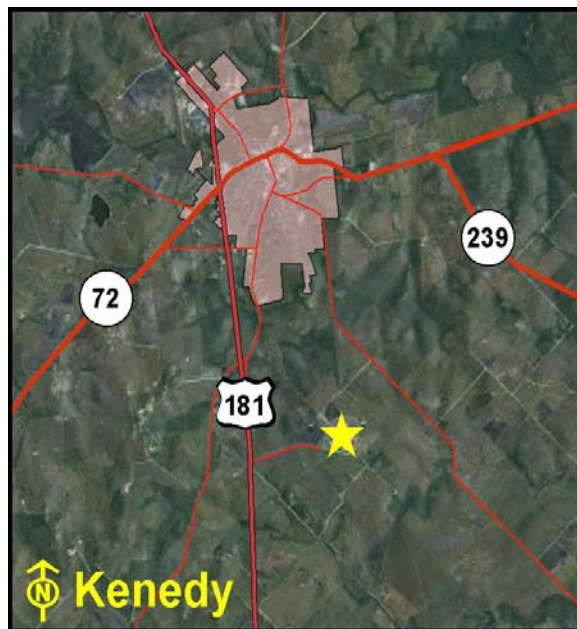
## Connally Unit

**Location:**

899 FM 632, Kenedy, Karnes County, Texas

**Legal Description:**Volume 634, Page 409, Volume 639, Page 186,  
Karnes County Deed Records**Encumbrances****Physical:** Floodplain**Legal:** Deed Restrictions: None

Easements: Utility



Location Map

**Acres:** ..... 813.35**Sen. Dist.:**.....21 **Rep. Dist.:**.....17 **FAR:**..... 0.03**Bldgs.:** .....25 **Bldg Sq Ft** ..... 936,568 sq.ft.**% in Floodplain:**..... 5% **Slope:** .....Moderate**Zoning:** .....Unzoned**Frontage:** .....FM 632, CR 147**Utilities:** .....Electricity, Gas, Telephone, Wastewater, Water**Surrounding Uses:** .....Residential, Agricultural**Current Use:** .....State Prison Facility**Highest and Best Use:** .....State Prison Facility**Agency Projected Use:** .....State Prison Facility

The Texas Department of Criminal Justice utilizes this site as a state prison facility. It is located on FM 632, south of the City of Kenedy. The site is improved with 25 buildings, chain link fencing, paved parking and perimeter security lighting. The surrounding land uses include agricultural development and scattered rural homesites.

**Recommendation:*****Retain for continued agency operations.***

## Texas General Land Office

## Cotulla Unit

**Location:**

F.M. 624, Cotulla, La Salle County, Texas

**Legal Description:**

Volume 303, Page 336, La Salle County Official Records

**Encumbrances**

Physical: None

Legal: Deed Restrictions: None

Easements: Utility



Location Map

Acres: ..... 36.00

Bldgs.: .....1 Bldg Sq Ft ..... 74,904 sq.ft.

Sen. Dist.:.....21 Rep. Dist.:.....80 FAR:..... 0.05

% in Floodplain:..... 0% Slope:.....Level

Zoning: .....Unzoned

Frontage: .....F.M. 624

Utilities: .....Electricity, Gas, Telephone, Wastewater, Water

Surrounding Uses: .....Agricultural, Ranching, Residential

Current Use: .....Correctional Facility

Highest and Best Use: .....Correctional Facility

Agency Projected Use: .....Correctional Facility

The Texas Department of Criminal Justice utilizes this site as a correctional facility. It is located east of Cotulla on FM 624. The site is improved with one large building, a covered recreation area, fencing, concrete parking and security lighting. The surrounding land uses include ranching, agricultural and residential developments.

**Recommendation:*****Retain for continued agency operations.***



## Texas General Land Office

## Crain/Hilltop/Murray/Woodman Units

**Location:**

SH 36 and FM 929, Gatesville, Coryell County, Texas

**Legal Description:**Volume 388-50, Page 94, Volume 397, Page 332,  
Volume 456, Page 697, Volume 579, Page 387,  
Coryell County Official Records**Encumbrances****Physical:** Floodplain**Legal:** *Deed Restrictions:* None*Easements:* Utility, ROW

Location Map

**Acres:** .....1,166.44**Bldgs.:** .....223 **Bldg Sq Ft** .....1,324,846 sq.ft.**Sen. Dist.:**.....24 **Rep. Dist.:**.....59 **FAR:**..... 0.03**% in Floodplain:**..... 40% **Slope:** .....Moderate**Zoning:** .....Civic**Frontage:** .....SH 36, FM 929**Utilities:** .....Electricity, Gas, Telephone, Wastewater, Water**Surrounding Uses:** .....Agricultural, Governmental, Residential, Commercial**Current Use:** .....State Prison Facilities/Agricultural**Highest and Best Use:** .....State Prison Facilities/Agricultural**Agency Projected Use:** .....State Prison Facilities/Agricultural

The Texas Department of Criminal Justice utilizes these sites as prison facilities and for agricultural production. Located north of Gatesville on SH 36 and FM 929. The facility is improved with 223 buildings, chain-link fencing, security lighting, recreational areas and concrete parking. The surrounding land uses include agricultural, residential, governmental and commercial developments.

**Recommendation:*****Retain for continued agency operations.***

## Texas General Land Office

## Dalhart Unit

## Location:

11950 FM 998, Dalhart, Hartley County, Texas

## Legal Description:

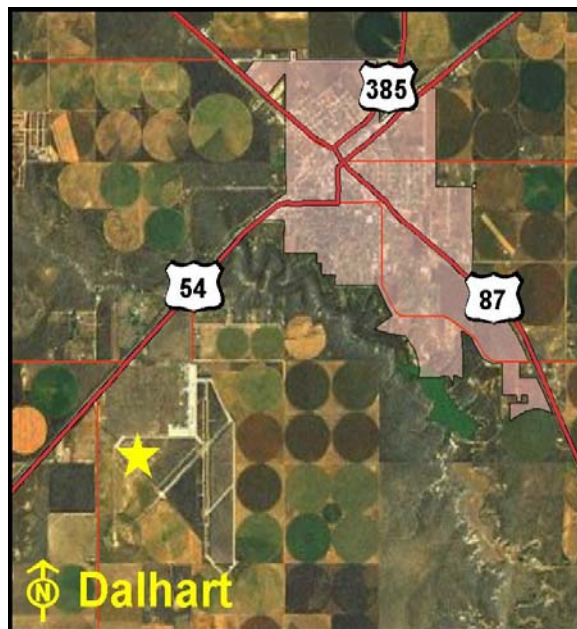
Volume 20, Page 840, Hartley County Official Records

## Encumbrances

Physical: None

Legal: Deed Restrictions: None

Easements: Utility



Location Map

Acres: .....1,520.42

Sen. Dist.:.....31 Rep. Dist.:.....86 FAR:..... 0.01

Bldgs.: .....21 Bldg Sq Ft ..... 256,839 sq.ft.

% in Floodplain:..... 0% Slope:.....Level

Zoning: .....Unzoned

Frontage: .....FM 998

Utilities: .....Electricity, Gas, Telephone, Wastewater, Water

Surrounding Uses: .....Agricultural, Governmental, Residential

Current Use: .....State Prison Facility/Agricultural

Highest and Best Use: .....State Prison Facility/Agricultural

Agency Projected Use: .....State Prison Facility/Agricultural

The Texas Department of Criminal Justice utilizes this site as a prison facility and for agricultural production. It is located on FM 998 southwest of Dalhart. The site is improved with 21 buildings, chain-link barb wire fencing, recreational areas, exterior security lighting and concrete parking. The surrounding land use includes agricultural, governmental and residential development.

## Recommendation:

*Retain for continued agency operations.*

## Texas General Land Office

## Daniel Unit

**Location:**

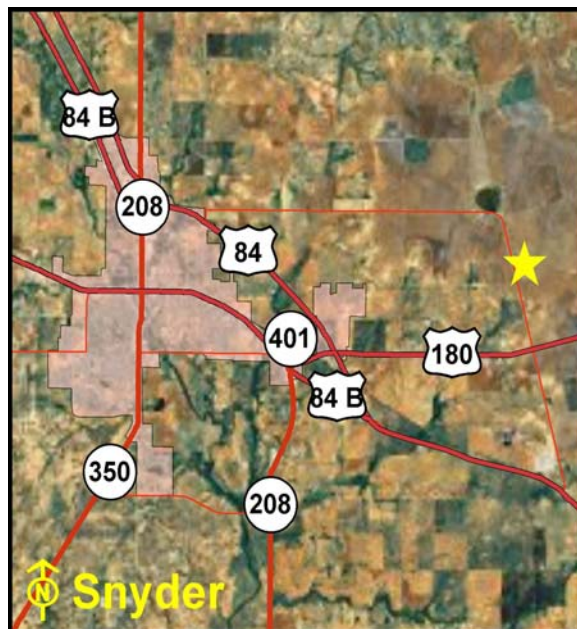
938 South FM 1673, Snyder, Scurry County, Texas

**Legal Description:**

Volume 354, Page 228, Scurry County Official Records

**Encumbrances****Physical:** None**Legal:** Deed Restrictions: None

Easements: Utility



Location Map

**Acres:** ..... 579.36**Bldgs.:** .....25 **Bldg Sq Ft** ..... 281,377 sq.ft.**Sen. Dist.:**.....28 **Rep. Dist.:**.....83 **FAR:**..... 0.01**% in Floodplain:**..... 0% **Slope:**.....Level**Zoning:** .....Unzoned**Frontage:** .....FM 1673**Utilities:** .....Electricity, Gas, Telephone, Wastewater, Water**Surrounding Uses:** .....Agricultural**Current Use:** .....State Prison Facility/Agricultural**Highest and Best Use:** .....State Prison Facility/Agricultural**Agency Projected Use:** .....State Prison Facility/Agricultural

The Texas Department of Criminal Justice utilizes this site as a prison facility and for agricultural production. It is located on FM 1673 in Snyder. The site is improved with 25 buildings, security fencing and lighting and concrete parking. The surrounding land uses include mainly agricultural developments.

**Recommendation:*****Retain for continued agency operations.***

## Texas General Land Office

## Darrington Unit

**Location:**

FM 521, Rosharon, Brazoria County, Texas

**Legal Description:**

Volume 146, Pages 136-139, Brazoria County Deed Records

**Encumbrances****Physical:** Floodplain**Legal:** Deed Restrictions: None

Easements: Pipeline, ROW



Location Map

**Acres:** .....6,770.13**Bldgs.:** .....72 **Bldg Sq Ft** ..... 752,983 sq.ft.**Sen. Dist.:**.....11 **Rep. Dist.:**.....25 **FAR:**..... 0.01**% in Floodplain:**..... 61% **Slope:** .....Moderate**Zoning:** .....Unzoned**Frontage:** .....FM 521, CR 54**Utilities:** .....Electricity, Gas, Telephone, Wastewater, Water**Surrounding Uses:** .....Agricultural, Residential**Current Use:** .....State Prison Facility/Agricultural**Highest and Best Use:** .....State Prison Facility/Agricultural**Agency Projected Use:** .....State Prison Facility/Agricultural

The Texas Department of Criminal Justice utilizes this site as a prison facility and for agricultural production. The site is bisected by FM 521. Parcel A (1,055 acres) is located on the east side and Parcel B (5,715.13 acres) on the west side, north of Rosharon. The site is improved with 72 buildings, a waste water treatment facility, water plant, security fencing, recreational areas, security lighting and concrete parking. The surrounding land uses include agricultural and residential developments.

**Recommendation:*****Retain for continued agency operations.***



## Texas General Land Office

## Diboll Unit

**Location:**

1604 South First Street, Diboll, Angelina County,  
Texas

**Legal Description:**

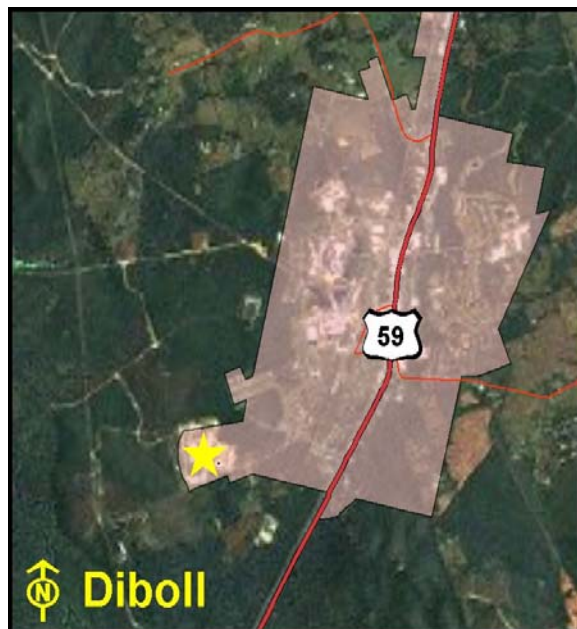
Volume 1161, Page 782, Angelina County Official  
Records

**Encumbrances**

**Physical:** None

**Legal:** *Deed Restrictions:* None

*Easements:* Utility



Location Map

**Acres:** ..... 100.00

**Sen. Dist.:**.....3 **Rep. Dist.:**.....57 **FAR:**..... 0.04

**Bldgs.:** .....8 **Bldg Sq Ft** ..... 158,108 sq.ft.

**% in Floodplain:**..... 0% **Slope:**.....Level

**Zoning:** .....Unzoned

**Frontage:** .....South First Street

**Utilities:** .....Electricity, Gas, Telephone, Wastewater, Water

**Surrounding Uses:** .....Residential, Governmental, Woodlands

**Current Use:** .....Correctional Facility

**Highest and Best Use:** .....Correctional Facility

**Agency Projected Use:** .....Correctional Facility

The Texas Department of Criminal Justice utilizes this site as a correctional facility. It is located on South First Street in Diboll. The site is improved with 8 buildings, perimeter fencing, security lighting and paved parking. The surrounding land uses include timberland, governmental and residential development.

**Recommendation:**

***Retain for continued agency operations.***

## Texas General Land Office

## Dominguez Unit

**Location:**

6535 Cagnon Road, San Antonio, Bexar County,  
Texas

**Legal Description:**

Volume 6115, Page 1925, Bexar County Official  
Records

**Encumbrances**

**Physical:** None

**Legal:** *Deed Restrictions:* Restricted Use

*Easements:* Utility



Location Map

**Acres:** ..... 71.72

**Bldgs.:** .....14 **Bldg Sq Ft** ..... 301,102 sq.ft.

**Sen. Dist.:**.....19 **Rep. Dist.:**...117 **FAR:**..... 0.10

**% in Floodplain:**..... 0% **Slope:**.....Level

**Zoning:** .....Unzoned

**Frontage:** .....Cagnon Road

**Utilities:** .....Electricity, Gas, Telephone, Wastewater, Water

**Surrounding Uses:** .....Governmental, Agricultural, Residential

**Current Use:** .....State Prison Facility

**Highest and Best Use:** .....State Prison Facility

**Agency Projected Use:** .....State Prison Facility

The Texas Department of Criminal Justice utilizes this site as a prison facility. It is located west of San Antonio on Cagnon Road. The site is improved with 14 buildings, chain-link and security fencing, covered recreation yards, security lighting and concrete parking. The surrounding land uses include agricultural, governmental and residential development.

**Recommendation:**

***Retain for continued agency operations.***

## Texas General Land Office

## Duncan Unit

**Location:**

1502 South First Street, Diboll, Angelina County,  
Texas

**Legal Description:**

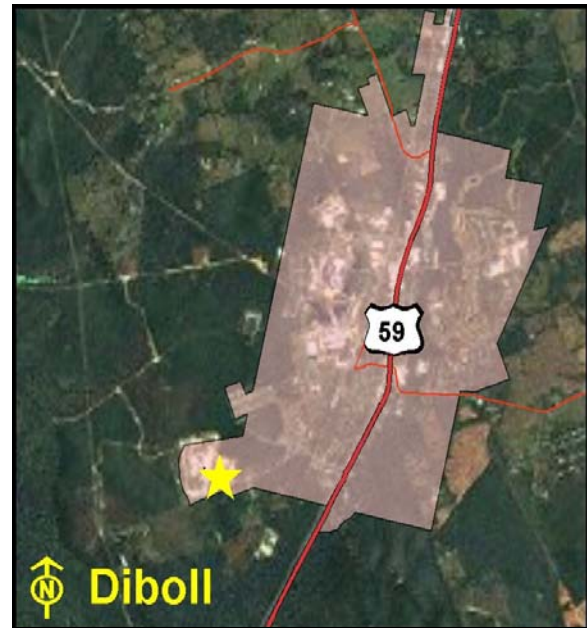
Volume 779, Page 160-164, Angelina County Deed  
Records

**Encumbrances**

**Physical:** None

**Legal:** *Deed Restrictions:* None

*Easements:* Utility



Location Map

**Acres:** ..... 25.00

**Bldgs.:** .....1 **Bldg Sq Ft** ..... 72,293 sq.ft.

**Sen. Dist.:**.....3 **Rep. Dist.:**.....57 **FAR:**..... 0.07

**% in Floodplain:**..... 0% **Slope:**.....Level

**Zoning:** .....Unzoned

**Frontage:** .....South First Street

**Utilities:** .....Electricity, Gas, Telephone, Wastewater, Water

**Surrounding Uses:** .....Residential, Woodlands, Governmental

**Current Use:** .....Correctional Facility

**Highest and Best Use:** .....Correctional Facility

**Agency Projected Use:** .....Correctional Facility

The Texas Department of Criminal Justice owns and utilizes this site as a correctional facility. It is located on South First Street in Diboll. The site is improved with one building, perimeter fencing, security lighting and paved parking. The surrounding land uses include timber, governmental and residential developments.

**Recommendation:**

***Retain for continued agency operations.***

## Texas General Land Office

## Eastham Unit

**Location:**

2665 Prison Road #1, Lovelady, Houston County,  
Texas

**Legal Description:**

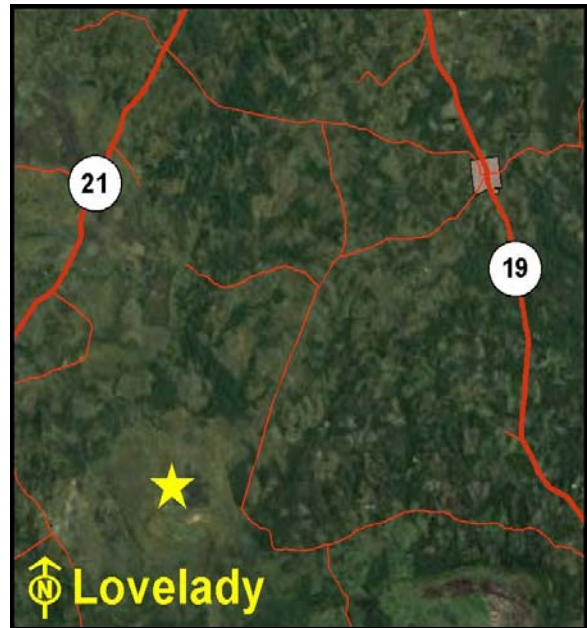
All of R. Camp, M. Ledbetter, C.E. Milon, E.  
Fitzsimmons, D. Eastham, W. Ford, C. Colcott, & G.  
Robbins Surveys, & parts of the J. Coughran, H.  
Glodmay, C. Richards, & G. Badilla Surveys; Houston

**Encumbrances**

**Physical:** Floodplain

**Legal:** *Deed Restrictions:* None

*Easements:* Utility, Pipeline



Location Map

**Acres:** .....12,788.86

**Bldgs.:** .....159 **Bldg Sq Ft** .....1,060,953 sq.ft.

**Sen. Dist.:**.....5 **Rep. Dist.:**.....57 **FAR:**..... 0.01

**% in Floodplain:**..... 38% **Slope:** .....Moderate

**Zoning:** .....Unzoned

**Frontage:** .....FM 230

**Utilities:** .....Electricity, Gas, Telephone, Wastewater, Water, Water Well

**Surrounding Uses:** .....Agricultural, Governmental

**Current Use:** .....State Prison Facility/Agricultural

**Highest and Best Use:** .....State Prison Facility/Agricultural

**Agency Projected Use:** .....State Prison Facility/Agricultural

The Texas Department of Criminal Justice utilizes this site as a prison facility and for agricultural production. It is located southwest of Lovelady on FM 230 in the Weldon community. The site is improved with 159 buildings, water wells and towers, security fencing, recreational areas, a sewer plant, security lighting and concrete parking. The surrounding land uses include the Ferguson Prison Unit and agricultural developments.

**Recommendation:**

***Retain for continued agency operations.***



## Texas General Land Office

## Ellis Unit

**Location:**

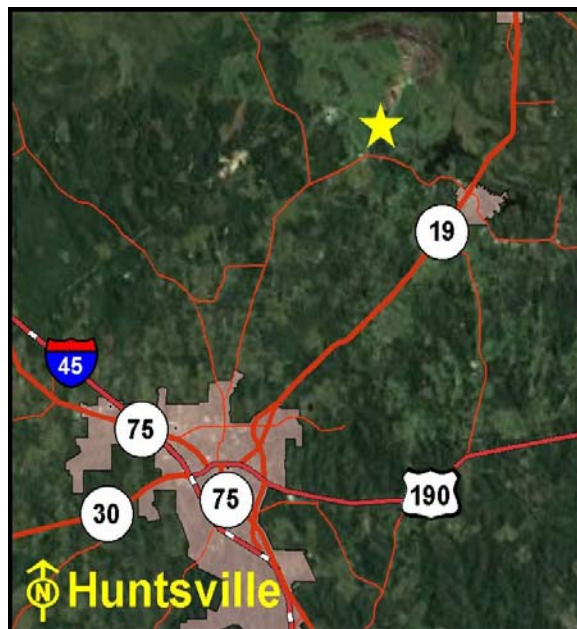
FM 980, Huntsville, Walker County, Texas

**Legal Description:**

Volume 110, Page 234, Volume 98, Page 297, Volume 160, Page 546, Volume 116, Page 357, Walker County Official Records

**Encumbrances****Physical:** Floodplain**Legal:** Deed Restrictions: None

Easements: Utility



Location Map

**Acres:** .....11,426.68**Bldgs.:** .....149 **Bldg Sq Ft** ..... 831,442 sq.ft.**Sen. Dist.:** .....5 **Rep. Dist.:** .....18 **FAR:** ..... 0.01**% in Floodplain:** ..... 70% **Slope:** .....Moderate**Zoning:** .....Unzoned**Frontage:** .....FM 980**Utilities:** .....Electricity, Gas, Telephone, Wastewater, Water**Surrounding Uses:** .....Agricultural, Residential, Governmental**Current Use:** .....State Prison Facility/Agricultural**Highest and Best Use:** .....State Prison Facility/Agricultural**Agency Projected Use:** .....State Prison Facility/Agricultural

The Texas Department of Criminal Justice utilizes this site as a prison facility and for agricultural production. It is located northeast of Huntsville on FM 980. The site is improved with 149 buildings, interior/exterior security fencing, a sewer treatment plant, recreational areas, security lighting and concrete parking. The surrounding land uses include agricultural, governmental and residential developments.

**Recommendation:*****Retain for continued agency operations.***

## Texas General Land Office

## Estelle Unit

**Location:**

FM 980 and FM 3478, Huntsville, Walker County,  
Texas

**Legal Description:**

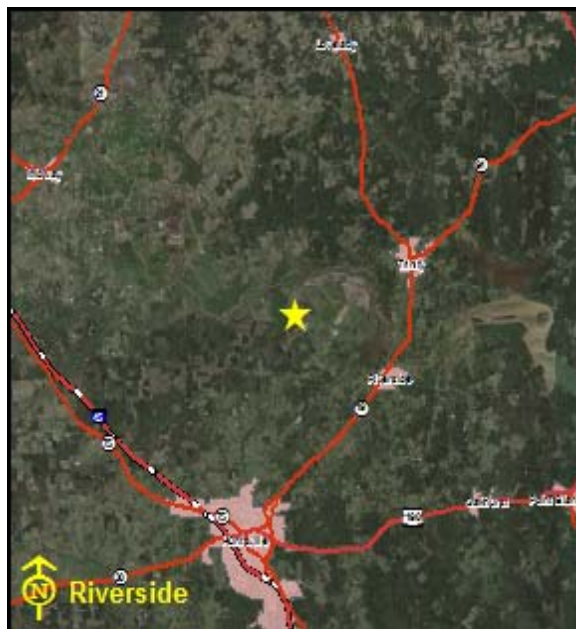
Volume 392, Page 114, Walker County Deed Records

**Encumbrances**

**Physical:** Floodplain

**Legal:** *Deed Restrictions:* None

*Easements:* Utility, ROW



Location Map

**Acres:** .....5,458.73

**Bldgs.:** .....75 **Bldg Sq Ft** ..... 916,270 sq.ft.

**Sen. Dist.:**.....5 **Rep. Dist.:**.....18 **FAR:**..... 0.01

**% in Floodplain:**..... 75% **Slope:**.....Level

**Zoning:** .....Unzoned

**Frontage:** .....FM 980, FM 3478

**Utilities:** .....Electricity, Gas, Telephone, Wastewater, Water

**Surrounding Uses:** .....Agricultural, Residential, Governmental

**Current Use:** .....State Prison Facility/Agricultural

**Highest and Best Use:** .....State Prison Facility/Agricultural

**Agency Projected Use:** .....State Prison Facility/Agricultural

The Texas Department of Criminal Justice utilizes this site as agricultural production and a prison facility. The site consists of two parcels, Parcel A (4,562.74 acres) and Parcel B (895.99 acres). It is located north of Huntsville on the corner of FM 980 and FM 3478. The site is improved with 75 buildings, interior fencing and security lighting, exterior high security fencing and lighting, recreational areas, a sewage treatment plant and concrete parking. Parcel A encompasses the prison unit and most of the agricultural production. Parcel B is utilized for cattle grazing, timber production and recreational hunting.

The GLO recommends the sale of 33.26 unused acres of the Estelle Unit. The appraisal was not available at the time of this report. The appraisal is forthcoming.

**Recommendation:**

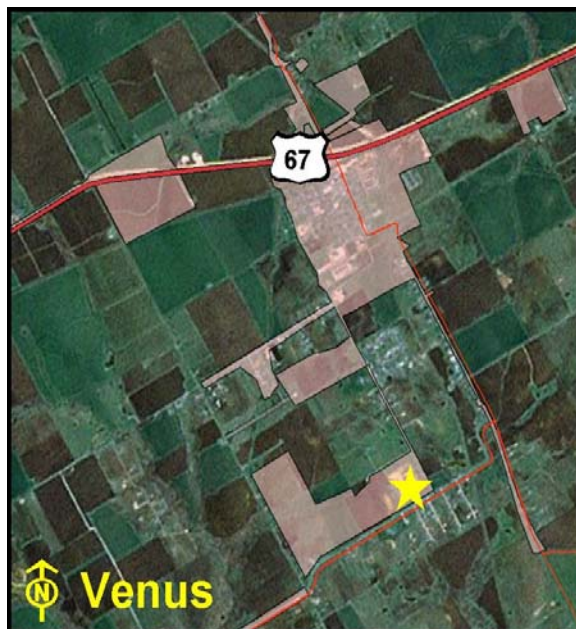
***Retain 5,425.47 acres containing the compound and agricultural operation. GLO recommends sale of the 33.26 acres of excess property.***

## Texas General Land Office

## Estes Unit

**Location:**

1100 FM 1807, Venus, Johnson County, Texas

**Legal Description:**Volume 2203, Page 18, Volume 1260, Page 222,  
Johnson County Official Records**Encumbrances****Physical:** None**Legal:** *Deed Restrictions:* None*Easements:* Utility

Location Map

**Acres:** ..... 40.00**Bldgs.:** .....5 **Bldg Sq Ft** ..... 168,817 sq.ft.**Sen. Dist.:**.....22 **Rep. Dist.:**.....58 **FAR:**..... 0.10**% in Floodplain:**..... 0% **Slope:**.....Level**Zoning:** .....Commercial**Frontage:** .....FM 1807, CR 214**Utilities:** .....Electricity, Gas, Telephone, Wastewater, Water**Surrounding Uses:** .....Residential, Agricultural**Current Use:** .....State Prison Facility**Highest and Best Use:** .....State Prison Facility**Agency Projected Use:** .....State Prison Facility

The Texas Department of Criminal Justice utilizes this site as a prison facility. It is located on FM 1807 in Venus. The site is improved with five buildings, interior/exterior security fencing, recreational areas, security lighting and concrete parking. The surrounding land uses include agricultural and residential development.

**Recommendation:*****Retain for continued agency operations.***

## Texas General Land Office

## Ferguson Unit

**Location:**

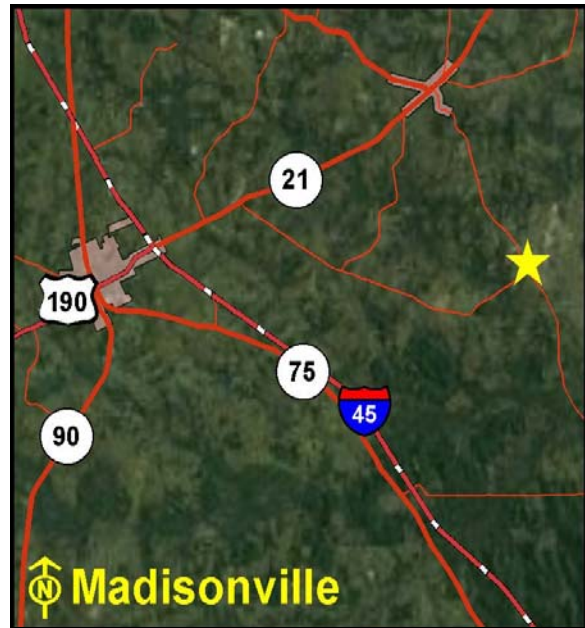
FM 247, Madisonville, Madison County, Texas

**Legal Description:**

T. Lamb, WM Walker, M. Rawlins, J. Kendig, S. McGown, P. McLean, I. Worsham, J. Pierson, G. Young, S. Brimberry, T. Carson, H. Burtis, and N. Rhodes Surveys; Madison County Deed Records

**Encumbrances****Physical:** Floodplain**Legal:** Deed Restrictions: None

Easements: Utility



Location Map

**Acres:** .....4,354.74**Sen. Dist.:**.....5 **Rep. Dist.:**.....57 **FAR:**..... 0.01**Bldgs.:** .....111 **Bldg Sq Ft** ..... 737,911 sq.ft.**% in Floodplain:**..... 43% **Slope:** .....Moderate**Zoning:** .....Unzoned**Frontage:** .....FM 247**Utilities:** .....Electricity, Gas, Telephone, Wastewater, Water, Water Well**Surrounding Uses:** .....Agricultural, Governmental**Current Use:** .....State Prison Facility/Agricultural**Highest and Best Use:** .....State Prison Facility/Agricultural**Agency Projected Use:** .....State Prison Facility/Agricultural

The Texas Department of Criminal Justice utilizes this site as a prison facility and for agricultural production. It is located east of Madisonville on FM 247. The site is improved with 111 buildings, security fencing and wire, a waste water treatment plant, two water wells, recreational areas, security lighting and concrete parking. The surrounding land use includes Eastham Prison Farm and agricultural developments.

**Recommendation:*****Retain for continued agency operations.***



## Texas General Land Office

## Fort Stockton Unit

**Location:**

1500 East IH-10, Fort Stockton, Pecos County, Texas

**Legal Description:**

Block R, George C. Thurman Survey A-77, Pecos County Official Records

**Encumbrances**

Physical: None

Legal: Deed Restrictions: None

Easements: Utility



Location Map

Acres: ..... 25.01

Bldgs.: .....3 Bldg Sq Ft ..... 80,025 sq.ft.

Sen. Dist.:.....19 Rep. Dist.:.....74 FAR:..... 0.07

% in Floodplain:..... 0% Slope:.....Level

Zoning: .....Commercial

Frontage: .....IH-10

Utilities: .....Electricity, Gas, Telephone, Wastewater, Water

Surrounding Uses: .....Governmental, Rangeland, Commercial

Current Use: .....State Prison Facility

Highest and Best Use: .....State Prison Facility

Agency Projected Use: .....State Prison Facility

The Texas Department of Criminal Justice utilizes this site as a prison facility. It is located on IH-10 in northeast Fort Stockton. The site is improved with three buildings, fencing, paved parking and security lighting. The surrounding land uses include rangeland, commercial and governmental developments.

**Recommendation:*****Retain for continued agency operations.***

## Texas General Land Office

## Glossbrenner Unit

**Location:**

623 South FM 1329, San Diego, Duval County, Texas

**Legal Description:**San Leandro Grant Abstract A-491, Duval County  
Deed Records**Encumbrances****Physical:** None**Legal:** *Deed Restrictions:* None*Easements:* Utility, ROW

Location Map

**Acres:** ..... 283.33**Bldgs.:** .....5 **Bldg Sq Ft** ..... 84,958 sq.ft.**Sen. Dist.:**.....21 **Rep. Dist.:**.....31 **FAR:**..... 0.01**% in Floodplain:**..... 0% **Slope:**.....Level**Zoning:** .....Unzoned**Frontage:** .....FM 1329**Utilities:** .....Electricity, Gas, Telephone, Wastewater, Water**Surrounding Uses:** .....Agricultural, Rangeland**Current Use:** .....State Prison Facility**Highest and Best Use:** .....State Prison Facility**Agency Projected Use:** .....State Prison Facility

The Texas Department of Criminal Justice utilizes this site as a state prison facility. It is located approximately five miles south of San Diego, on FM 1329. The site is improved with five buildings, paved parking, fencing and security lighting. The surrounding land uses include rangeland and agricultural developments.

**Recommendation:*****Retain for conitued agency operations. Dispose if no longer needed.***

## Texas General Land Office

## Goodman Unit

**Location:**

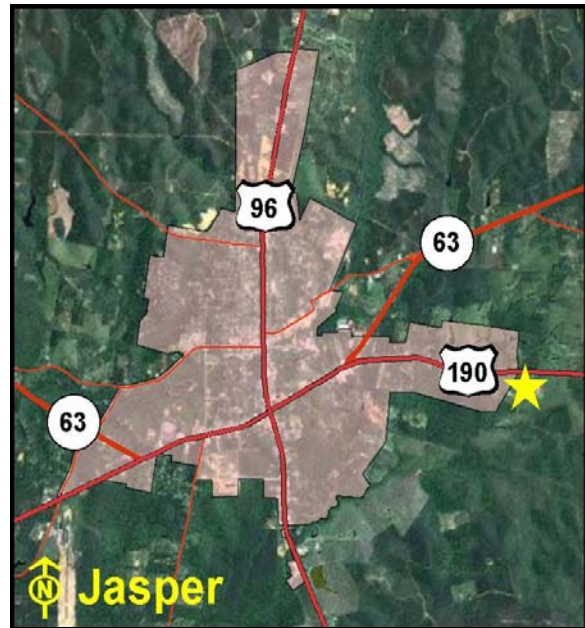
U.S. Highway 190, Jasper, Jasper County, Texas

**Legal Description:**

Volume 467, Page 928-932, Jasper County Official Records

**Encumbrances****Physical:** None**Legal:** Deed Restrictions: None

Easements: Utility



Location Map

**Acres:** ..... 493.84**Bldgs.:** .....9 **Bldg Sq Ft** ..... 95,261 sq.ft.**Sen. Dist.:**.....3 **Rep. Dist.:**.....19 **FAR:**..... 0.01**% in Floodplain:**..... 0% **Slope:**.....Level**Zoning:** .....Unzoned**Frontage:** .....U.S. HWY 190**Utilities:** .....Electricity, Telephone, Water**Surrounding Uses:** .....Residential, Woodlands, Agricultural**Current Use:** .....State Prison Facility/Agricultural**Highest and Best Use:** .....State Prison Facility/Agricultural**Agency Projected Use:** .....State Prison Facility/Agricultural

The Texas Department of Criminal Justice utilizes this site as a prison facility and for agricultural development. It is located east of the City of Jasper on U.S. Highway 190. The site is improved with 9 buildings, chain-link perimeter fencing, security lighting and concrete parking. The surrounding land uses include agricultural and residential developments.

**Recommendation:*****Retain for continued agency operations. Dispose of no longer needed.***

## Texas General Land Office

## Goree Unit

**Location:**

State Highway 75 South, Huntsville, Walker County, Texas

**Legal Description:**

Volume 6, Page 628, Walker County Official Records

**Encumbrances**

Physical: None

Legal: Deed Restrictions: None

Easements: Utility



Location Map

Acres: ..... 717.47

Bldgs.: .....55 Bldg Sq Ft ..... 251,886 sq.ft.

Sen. Dist.:.....5 Rep. Dist.:.....18 FAR:..... 0.01

% in Floodplain:..... 0% Slope: .....Moderate

Zoning: .....Mixed-Use

Frontage: .....SH 75 South, Southwood Dr

Utilities: .....Electricity, Gas, Telephone, Wastewater, Water

Surrounding Uses: .....Woodlands, Commercial, Residential, Industrial

Current Use: .....State Prison Facility/Agricultural

Highest and Best Use: .....State Prison Facility/Agricultural

Agency Projected Use: .....State Prison Facility/Agricultural

The Texas Department of Criminal Justice utilizes this site as a prison facility and for agricultural production. It is located on State Highway 75 in Huntsville. The site is improved with 55 buildings, security fencing, swimming pool, corrals, security lighting and concrete parking. The surrounding land uses include woodlands, commercial, industrial and residential developments.

**Recommendation:**

***Retain for continued agency operations.***



## Texas General Land Office

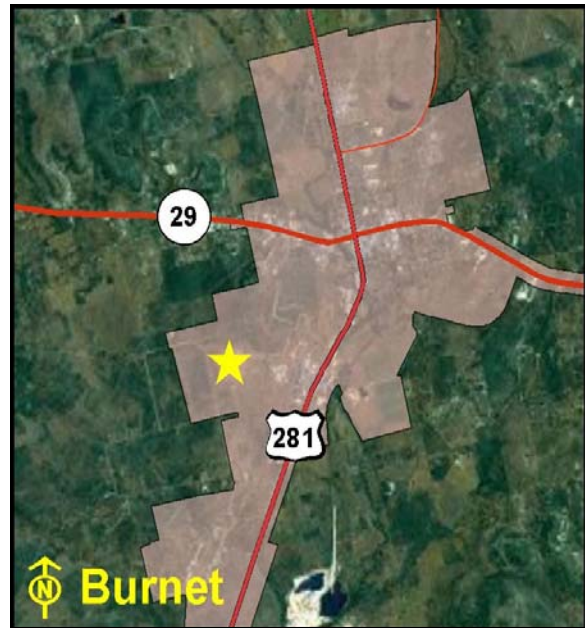
## Halbert Unit

**Location:**

800 Ellen Halbert Drive, Burnet, Burnet County, Texas

**Legal Description:**

Volume 608, Page 19-25, Burnet County Official Records

**Encumbrances****Physical:** None**Legal:** *Deed Restrictions:* None*Easements:* ROW, Utility

Location Map

**Acres:** ..... 222.74**Bldgs.:** .....4 **Bldg Sq Ft** ..... 84,821 sq.ft.**Sen. Dist.:**.....24 **Rep. Dist.:**.....20 **FAR:**..... 0.01**% in Floodplain:**..... 0% **Slope:** .....Moderate**Zoning:** .....Commercial**Frontage:** .....Ellen Halbert Drive**Utilities:** .....Electricity, Gas, Telephone, Wastewater, Water**Surrounding Uses:** .....Residential, Industrial, Ranching, Recreational**Current Use:** .....State Prison Facility/Agricultural**Highest and Best Use:** .....State Prison Facility/Agricultural**Agency Projected Use:** .....State Prison Facility/Agricultural

The Texas Department of Criminal Justice utilizes this site as a prison facility and for agricultural development. It is located on Ellen Halbert Drive on the southwest side of Burnet. The site is improved with four buildings, security fencing, concrete parking and security lighting. The surrounding land uses include ranchland, industrial, recreational and residential developments.

**Recommendation:*****Retain for continued agency operations.***

## Texas General Land Office

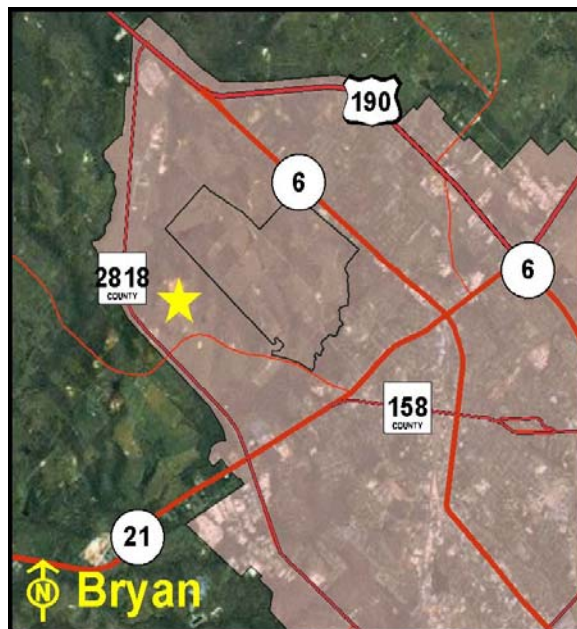
## Hamilton Unit

**Location:**

200 Lee Morrison Lane, Bryan, Brazos County, Texas

**Legal Description:**

Volume 2049, Page 316, Volume 1613, Page 181,  
 Volume 1611, Page 130, Volume 1077, Page 818,  
 Volume 760, Page 465, Volume 652, Page 339,  
 Brazos County Official Records

**Encumbrances****Physical:** None**Legal:** *Deed Restrictions:* None*Easements:* Utility

Location Map

**Acres:** ..... 349.63**Sen. Dist.:**.....5 **Rep. Dist.:**.....14 **FAR:**..... 0.01**Bldgs.:** .....12 **Bldg Sq Ft** ..... 193,737 sq.ft.**% in Floodplain:**..... 0% **Slope:** .....Moderate**Zoning:** .....Mixed-Use**Frontage:** .....Lee Morrison Ln, Sandy Point Rd**Utilities:** .....Electricity, Gas, Telephone, Wastewater, Water**Surrounding Uses:** .....Industrial, Agricultural, Residential**Current Use:** .....State Prison Facility/Agricultural**Highest and Best Use:** .....State Prison Facility/Agricultural**Agency Projected Use:** .....State Prison Facility/Agricultural

The Texas Department of Criminal Justice utilizes this site as a prison facility and for agricultural production. It is located in west Bryan on Lee Morrison Lane. The site is improved with 12 buildings, security fencing and lighting and concrete parking. The surrounding land uses include industrial, agricultural and residential development.

**Recommendation:*****Retain for continued agency operations.***

## Texas General Land Office

## Havins Unit

**Location:**

500 FM 45, Brownwood, Brown County, Texas

**Legal Description:**

Volume 1133, Page 267, Brown County Deed Records

**Encumbrances****Physical:** None**Legal:** *Deed Restrictions:* None*Easements:* Pipeline, Utility

Location Map

**Acres:** ..... 300.00**Sen. Dist.:**.....24 **Rep. Dist.:**.....60 **FAR:**..... 0.01**Bldgs.:** .....9 **Bldg Sq Ft** ..... 114,356 sq.ft.**% in Floodplain:**..... 0% **Slope:** .....Moderate**Zoning:** .....Unzoned**Frontage:** .....FM 45, CR 237**Utilities:** .....Electricity, Gas, Telephone, Wastewater, Water**Surrounding Uses:** .....Agricultural, Residential, Industrial**Current Use:** .....State Prison Facility**Highest and Best Use:** .....State Prison Facility**Agency Projected Use:** .....State Prison Facility

The Texas Department of Criminal Justice utilizes this site as a prison facility. It is located on the southwest corner of FM 45 and CR 237 on the south side of Brownwood. The site is improved with nine buildings, barbed-wire perimeter fencing, security fencing, concrete parking and security lighting. The surrounding land uses include agricultural, residential and industrial developments.

**Recommendation:*****Retain for continued agency operations.***

## Texas General Land Office

## Hightower/Henley/Plane Units

**Location:**

Hwy 321 and F.M. 686, Dayton, Liberty County, Texas

**Legal Description:**

Volume 1260, Page 40, Liberty County Deed Records

**Encumbrances****Physical:** None**Legal:** Deed Restrictions: None

Easements: Utility



Location Map

**Acres:** ..... 394.39**Bldgs.:** .....35 **Bldg Sq Ft** ..... 677,904 sq.ft.**Sen. Dist.:**.....3 **Rep. Dist.:**.....18 **FAR:**..... 0.04**% in Floodplain:**..... 0% **Slope:**.....Level**Zoning:** .....Unzoned**Frontage:** .....Hwy 321, F.M. 686**Utilities:** .....Electricity, Gas, Telephone, Wastewater, Water**Surrounding Uses:** .....Agricultural, Residential, Commercial, Industrial**Current Use:** .....State Prison Facility**Highest and Best Use:** .....State Prison Facility**Agency Projected Use:** .....State Prison Facility

The Texas Department of Criminal Justice utilizes this site as prison facilities. It is located on Highway 321 and FM 686 in Dayton. The site is improved with 35 buildings, security fencing and lighting, seven covered recreation areas and concrete parking. The surrounding land uses include agricultural, residential, light industrial and commercial developments.

**Recommendation:*****Retain for continued agency operations.***



## Texas General Land Office

## Hobby Unit

**Location:**

742 FM 712, Marlin, Falls County, Texas

**Legal Description:**

Volume 8, Page 156, Volume 13, Page 22, Volume 264, Page 275, Falls County Official Records

**Encumbrances****Physical:** Floodplain**Legal:** Deed Restrictions: None

Easements: Utility



Location Map

**Acres:** ..... 388.04**Bldgs.:** .....24 **Bldg Sq Ft** ..... 272,937 sq.ft.**Sen. Dist.:**.....22 **Rep. Dist.:**.....12 **FAR:**..... 0.02**% in Floodplain:**..... 90% **Slope:**.....Level**Zoning:** .....Unzoned**Frontage:** .....FM 712, FCR 301**Utilities:** .....Electricity, Gas, Telephone, Wastewater, Water**Surrounding Uses:** .....Agricultural**Current Use:** .....State Prison Facility/Cropland**Highest and Best Use:** .....State Prison Facility/Cropland**Agency Projected Use:** .....State Prison Facility/Cropland

The Texas Department of Criminal Justice utilizes this site as a prison facility and for agricultural production. It is located on FM 712 and CR 301 south of Marlin. The site is improved with 24 buildings, security fencing and lighting and concrete parking. The surrounding land uses include mainly agricultural developments.

**Recommendation:*****Retain for continued agency operations.***

## Texas General Land Office

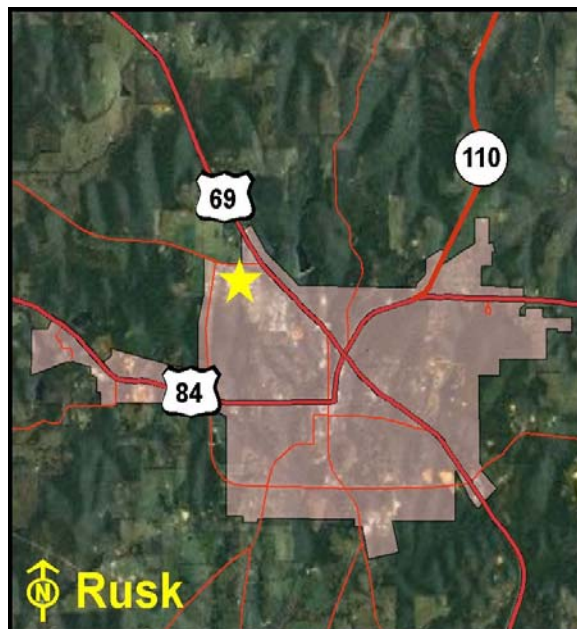
## Hodge/Skyview Units

**Location:**

379 FM 2972, Rusk, Cherokee County, Texas

**Legal Description:**

Volume 1068, Page 298, Cherokee County Deed Records

**Encumbrances****Physical:** None**Legal:** *Deed Restrictions:* None*Easements:* Utility

Location Map

**Acres:** ..... 58.04**Sen. Dist.:**.....3 **Rep. Dist.:**.....11 **FAR:**..... 0.08**Bldgs.:** .....16 **Bldg Sq Ft** ..... 212,998 sq.ft.**% in Floodplain:**..... 0% **Slope:**.....Level**Zoning:** .....Commercial**Frontage:** .....FM 2972, Black Lane**Utilities:** .....Electricity, Gas, Telephone, Wastewater, Water**Surrounding Uses:** .....Residential, Governmental, Medical, Commercial**Current Use:** .....State Prison Facility**Highest and Best Use:** .....State Prison Facility**Agency Projected Use:** .....State Prison Facility

The Texas Department of Criminal Justice utilizes this site as a prison facility. It is located on FM 2972 and Black Lane in Rusk. The site is improved with 16 buildings, chain-link fencing, security lighting and concrete parking. The surrounding land uses include governmental, medical, residential and commercial developments.

**Recommendation:*****Retain for continued agency operations.***

## Texas General Land Office

## Houston Regional Office

**Location:**

10110 Northwest Freeway, Houston, Harris County, Texas

**Legal Description:**

Document No. 300853323, Harris County Deed Records

**Encumbrances**

Physical: None

Legal: *Deed Restrictions:* Restricted Use

*Easements:* Utility



Location Map

Acres: ..... 2.49

Bldgs.: .....1 Bldg Sq Ft ..... 32,259 sq.ft.

Sen. Dist.:.....15 Rep. Dist.:...148 FAR:..... 0.30

% in Floodplain:..... 0% Slope:.....Level

Zoning: .....Unzoned

Frontage: .....Northwest Freeway

Utilities: .....Electricity, Gas, Telephone, Wastewater, Water

Surrounding Uses: .....Office

Current Use: .....Regional Office

Highest and Best Use: .....Regional Office

Agency Projected Use: .....Regional Office

The Texas Department of Criminal Justice utilizes this site as a regional office. It is located along the northwest side of Northwest Freeway (U.S. Hwy 290) in Houston. The site is improved with one building, parking and drive areas. The surrounding land use is primarily office development. Brookhollow/Houston Protective Covenants restrict use of land for commercial or office development.

**Recommendation:**

***Retain for continued agency operations.***

## Texas General Land Office

## Hughes Unit

## Location:

3201 FM 929, Gatesville, Coryell County, Texas

## Legal Description:

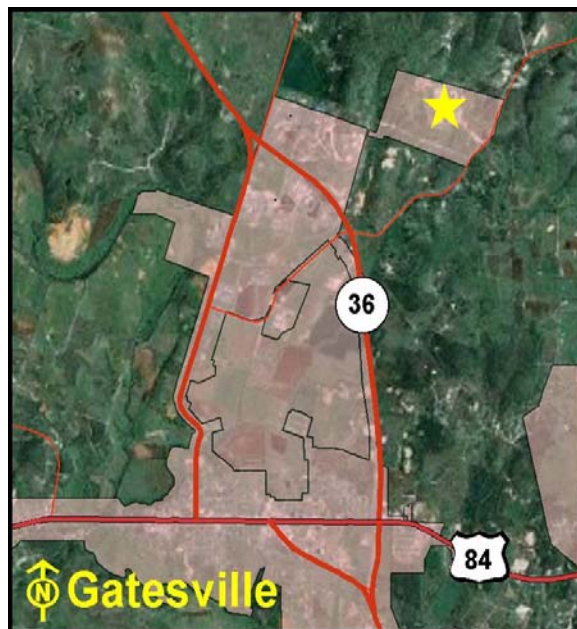
Volume 131, Page 115, Coryell County Deed Records

## Encumbrances

Physical: None

Legal: Deed Restrictions: None

Easements: Utility



Location Map

Acres: ..... 390.00

Sen. Dist.:.....24 Rep. Dist.:.....59 FAR:..... 0.04

Bldgs.: .....25 Bldg Sq Ft ..... 732,717 sq.ft.

% in Floodplain:..... 0% Slope: .....Moderate

Zoning: .....Civic

Frontage: .....FM 929

Utilities: .....Electricity, Gas, Telephone, Wastewater, Water

Surrounding Uses: .....Ranching, Residential, Governmental, Agricultural

Current Use: .....State Prison Facility/Agricultural

Highest and Best Use: .....State Prison Facility/Agricultural

Agency Projected Use: .....State Prison Facility/Agricultural

The Texas Department of Criminal Justice utilizes this site as a prison facility and for agricultural production. It is located northeast of Gatesville on FM 929. The site is improved with 25 buildings, security fencing and lightin and concrete parking. The surrounding land uses include ranching, governmental, agricultural and residential developments.

## Recommendation:

*Retain for continued agency operations.*



## Texas General Land Office

## Huntsville (Walls) Unit

**Location:**

815 12th Street, Huntsville, Walker County, Texas

**Legal Description:**

Volume 381, Page 287, Huntsville County Official Records

**Encumbrances****Physical:** Floodplain**Legal:** Deed Restrictions: None

Easements: Utility



Location Map

**Acres:** ..... 54.36**Sen. Dist.:**.....5 **Rep. Dist.:**.....18 **FAR:**..... 0.29**Bldgs.:** .....63 **Bldg Sq Ft** ..... 680,825 sq.ft.**% in Floodplain:**..... 18% **Slope:**.....Level**Zoning:** .....Mixed-Use**Frontage:** .....11th-14th St, Ave G, I & J**Utilities:** .....Electricity, Gas, Telephone, Wastewater, Water**Surrounding Uses:** .....Residential, Industrial, Commercial**Current Use:** .....State Prison Facility**Highest and Best Use:** .....State Prison Facility**Agency Projected Use:** .....State Prison Facility

The Texas Department of Criminal Justice utilizes this site as a prison facility. The site is divided into four parcels located within the City of Huntsville along various roads. It is improved with 63 buildings, brick security walls and concrete parking. The surrounding land uses include commercial, residential and industrial developments.

**Recommendation:*****Retain for continued agency operations.***

## Texas General Land Office

## Hutchins Unit

**Location:**

1500 East Langdon Road, Hutchins, Dallas County, Texas

**Legal Description:**

Volume 33, Page 475, Dallas County Official Records

**Encumbrances**

**Physical:** None

**Legal:** *Deed Restrictions:* Restricted Use

*Easements:* Utility



Location Map

**Acres:** ..... 68.90

**Bldgs.:** .....14 **Bldg Sq Ft** ..... 310,130 sq.ft.

**Sen. Dist.:**.....23 **Rep. Dist.:**...109 **FAR:**..... 0.10

**% in Floodplain:**..... 0% **Slope:**.....Level

**Zoning:** .....Industrial

**Frontage:** .....East Langdon Rd

**Utilities:** .....Electricity, Telephone, Wastewater, Water

**Surrounding Uses:** .....Governmental, Vacant

**Current Use:** .....State Prison Facility

**Highest and Best Use:** .....State Prison Facility

**Agency Projected Use:** .....State Prison Facility

The Texas Department of Criminal Justice utilizes this site as a prison facility. It is located on East Langdon Road near the Community of Hutchins. The site is improved with 14 buildings, perimeter fencing, security lighting and concrete parking. The surrounding land uses include a county maintenance facility and many vacant lots.

**Recommendation:**

***Retain for continued agency operations.***

## Texas General Land Office

## Jester I, III, IV Vance Units

**Location:**

FM 1464, Harlem Road, Grand Parkway, and Owens Road, Sugar Land, Fort Bend County, Texas

**Legal Description:**

Volume S, Page 25, Volume 43, Page 209, Volume 152, Page 423, Fort Bend County Official Records

**Encumbrances**

**Physical:** Floodplain

**Legal:** Deed Restrictions: None

Easements: Pipeline, Utility



Location Map

**Acres:** ..... 914.77

**Bldgs.:** .....136 **Bldg Sq Ft** ..... 951,189 sq.ft.

**Sen. Dist.:**.....18 **Rep. Dist.:**.....26 **FAR:**..... 0.02

**% in Floodplain:**..... 10% **Slope:** .....Moderate

**Zoning:** .....Unzoned

**Frontage:** .....FM 1464, Harlem Rd

**Utilities:** .....Electricity, Gas, Telephone, Wastewater, Water, Water Well

**Surrounding Uses:** .....Agricultural, Residential

**Current Use:** .....State Prison Facilities/Agricultural

**Highest and Best Use:** .....State Prison Facilities/Agricultural

**Agency Projected Use:** .....State Prison Facilities/Agricultural

The Texas Department of Criminal Justice utilizes these sites as prison facilities and for agricultural production. They are located west of Sugar Land on Harlem Road, Grand Parkway, Owens Road, and FM 1464. The sites are improved with 136 buildings, concrete parking, security fencing and lighting. The surrounding land uses include agricultural and residential developments.

**Recommendation:**

**Retain for continued agency operation.**

## Texas General Land Office

## Johnston Unit

**Location:**

703 Airport Road, Winnsboro, Wood County, Texas

**Legal Description:**

Volume 1319, Pages 137, 140, 145, 147, 150, 152, 157, Wood County Official Records

**Encumbrances****Physical:** Floodplain**Legal:** *Deed Restrictions:* Restricted Use*Easements:* Utility

Location Map

**Acres:** ..... 342.24**Sen. Dist.:**.....1 **Rep. Dist.:**.....5 **FAR:**..... 0.01**Bldgs.:** .....9 **Bldg Sq Ft** ..... 93,199 sq.ft.**% in Floodplain:**..... 15% **Slope:**.....Level**Zoning:** .....Unzoned**Frontage:** .....Airport Road**Utilities:** .....Electricity, Telephone, Wastewater, Water**Surrounding Uses:** .....Agricultural, Governmental, Residential**Current Use:** .....State Prison Facility/Agricultural**Highest and Best Use:** .....State Prison Facility/Agricultural**Agency Projected Use:** .....State Prison Facility/Agricultural

The Texas Department of Criminal Justice utilizes this site as a prison facility and for hay production. It is located on Airport Road in Winnsboro. The site is improved with nine buildings, security fencing, concrete parking and security lighting. The surrounding land uses include an Airport, church and residential developments.

**Recommendation:*****Retain for continued agency operations.***

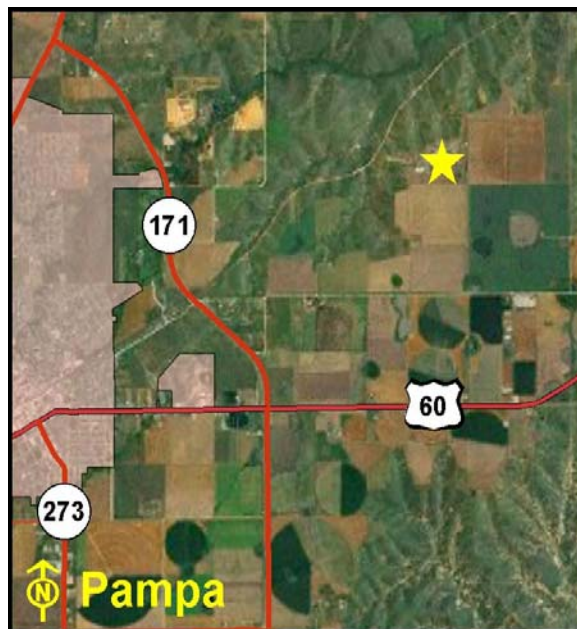


## Texas General Land Office

## Jordan Unit

**Location:**

8733 CR 12, Pampa, Gray County, Texas

**Legal Description:**All or parts of Sections 51,52,45 & 46, Block 3, I & GN  
RR Co. Surveys, Gray County Deed Records**Encumbrances****Physical:** None**Legal:** *Deed Restrictions:* None*Easements:* Pipeline, Utility

Location Map

**Acres:** .....1,211.36**Bldgs.:** .....22 **Bldg Sq Ft** ..... 267,669 sq.ft.**Sen. Dist.:**.....31 **Rep. Dist.:**.....88 **FAR:**..... 0.01**% in Floodplain:**..... 0% **Slope:** .....Moderate**Zoning:** .....Unzoned**Frontage:** .....CR 12**Utilities:** .....Electricity, Gas, Telephone, Wastewater, Water**Surrounding Uses:** .....Agricultural, Rangeland**Current Use:** .....State Prison Facility/Agricultural**Highest and Best Use:** .....State Prison Facility/Agricultural**Agency Projected Use:** .....State Prison Facility/Agricultural

The Texas Department of Criminal Justice utilizes this site as a prison facility and for agricultural production. It is located on County Road 12 east of Pampa. The site is improved with 22 buildings, security fencing and lighting and concrete parking. The surrounding land uses include rangeland and agricultural developments.

**Recommendation:*****Retain for continued agency operations.***

## Texas General Land Office

## Kegans Unit

**Location:**

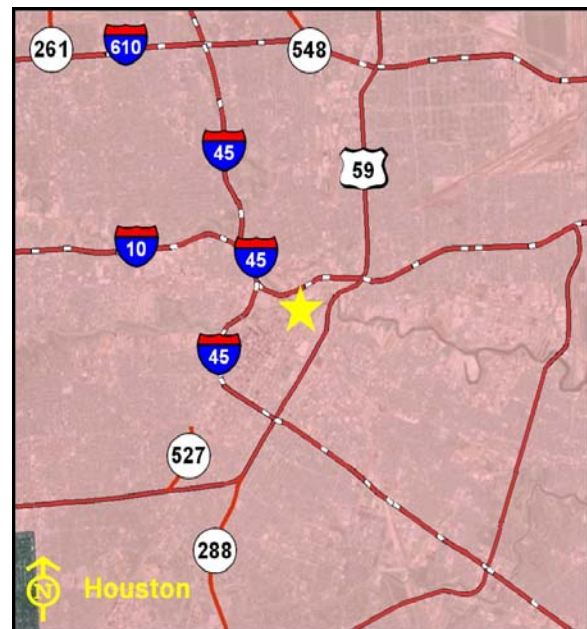
707 Top Street, Houston, Harris County, Texas

**Legal Description:**

Volume R, Page 544, Harris County Official Records

**Encumbrances****Physical:** Floodplain**Legal:** Deed Restrictions: None

Easements: Utility



Location Map

**Acres:** ..... 0.81**Bldgs.:** .....1 **Bldg Sq Ft** ..... 59,584 sq.ft.**Sen. Dist.:**.....13 **Rep. Dist.:**...142 **FAR:**..... 1.68**% in Floodplain:**..... 25% **Slope:**.....Level**Zoning:** .....Unzoned**Frontage:** .....Top St, Baker St**Utilities:** .....Electricity, Gas, Telephone, Wastewater, Water**Surrounding Uses:** .....Governmental, Industrial**Current Use:** .....Correctional Facility**Highest and Best Use:** .....Correctional Facility**Agency Projected Use:** .....Correctional Facility

The Texas Department of Criminal Justice utilizes this site as a correctional facility. It is located at the southwest corner of Top Street and Allen Street, in the north sector of the central business district in Houston. The site is improved with a four-story facility, paved parking, fencing and security lighting. The surrounding land uses include governmental and industrial developments.

**Recommendation:*****Retain for continued agency operation.***

## Texas General Land Office

## Kyle Unit

**Location:**

701 South IH 35, Kyle, Hays County, Texas

**Legal Description:**

Volume 667, Page 283, Hays County Official Records

**Encumbrances****Physical:** Floodplain**Legal:** Deed Restrictions: None

Easements: Utility



Location Map

**Acres:** ..... 12.20**Bldgs.:** .....2 **Bldg Sq Ft** ..... 118,762 sq.ft.**Sen. Dist.:**.....25 **Rep. Dist.:**.....45 **FAR:**..... 0.22**% in Floodplain:**..... 5% **Slope:**.....Level**Zoning:** .....Agriculture**Frontage:** .....IH 35**Utilities:** .....Electricity, Gas, Telephone, Wastewater, Water**Surrounding Uses:** .....Agricultural**Current Use:** .....State Prison Facility**Highest and Best Use:** .....State Prison Facility**Agency Projected Use:** .....State Prison Facility

The Texas Department of Criminal Justice utilizes this site as a prison facility. It is located on South IH 35 south of Kyle. The site is improved with two permanent buildings, concrete parking, security fencing and lighting. The surrounding land uses include a closed wastewater treatment plant, IH 35 and vacant agricultural land.

**Recommendation:*****Retain for continued agency operations.***



## Texas General Land Office

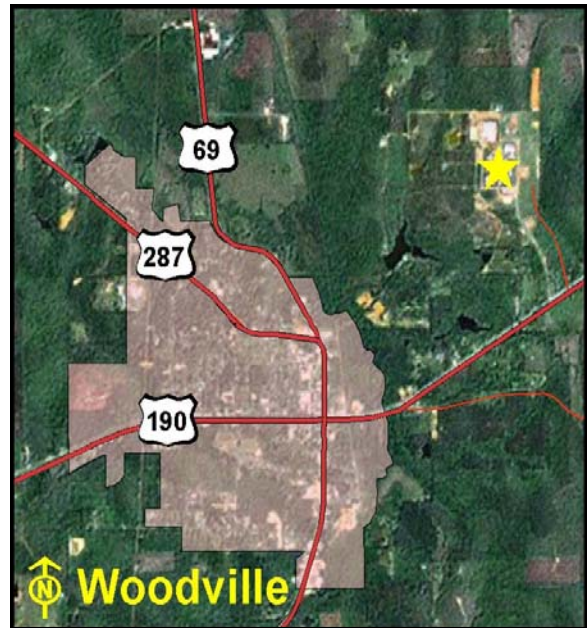
## Lewis Unit

**Location:**

FM 3497, Woodville, Tyler County, Texas

**Legal Description:**

Volume 476, Page 145, Tyler County Official Records

**Encumbrances****Physical:** None**Legal:** *Deed Restrictions:* None*Easements:* Utility

Location Map

**Acres:** ..... 360.00**Sen. Dist.:**.....3 **Rep. Dist.:**.....19 **FAR:**..... 0.04**Bldgs.:** .....24 **Bldg Sq Ft** ..... 562,241 sq.ft.**% in Floodplain:**..... 0% **Slope:**.....Level**Zoning:** .....Unzoned**Frontage:** .....FM 3497**Utilities:** .....Electricity, Telephone, Wastewater, Water**Surrounding Uses:** .....Residential, Woodlands**Current Use:** .....State Prison Facility/Agricultural**Highest and Best Use:** .....State Prison Facility/Agricultural**Agency Projected Use:** .....State Prison Facility/Agricultural

The Texas Department of Criminal Justice utilizes this site as a prison facility and agricultural production. It is located along FM 3497 in Woodville. The site is improved with 24 buildings, high security fencing and razor wire, activity sites, dog kennels, security lighting and concrete parking. The surrounding land uses include timber and small residential developments.

**Recommendation:*****Retain for continued agency operations.***

## Texas General Land Office

## Lindsey Unit

**Location:**

1137 Old Post Oak Rd (FM 3344), Jacksboro, Jack County, Texas

**Legal Description:**

Volume 604, Page 365, Jack County Official Records

**Encumbrances**

**Physical:** None

**Legal:** *Deed Restrictions:* None

*Easements:* Utility, Pipeline



Location Map

**Acres:** ..... 64.40

**Bldgs.:** .....14 **Bldg Sq Ft** ..... 146,409 sq.ft.

**Sen. Dist.:**.....30 **Rep. Dist.:**.....68 **FAR:**..... 0.05

**% in Floodplain:**..... 0% **Slope:**.....Level

**Zoning:** .....Residential

**Frontage:** .....Old Post Oak Rd

**Utilities:** .....Electricity, Telephone, Water Well, Septic Tank

**Surrounding Uses:** .....Agricultural, Governmental, Recreational

**Current Use:** .....State Prison Facility

**Highest and Best Use:** .....State Prison Facility

**Agency Projected Use:** .....State Prison Facility

The Texas Department of Criminal Justice utilizes this site as a prison facility. It is located northeast of Jacksboro on Old Post Oak Road. The site is improved with 14 buildings, security fencing, concrete parking and security lighting. The surrounding land uses include agricultural, governmental and recreational development.

**Recommendation:**

***Retain for continued agency operations.***

## Texas General Land Office

## Lockhart Unit

**Location:**

1400 Industrial Boulevard, Lockhart, Caldwell County, Texas

**Legal Description:**

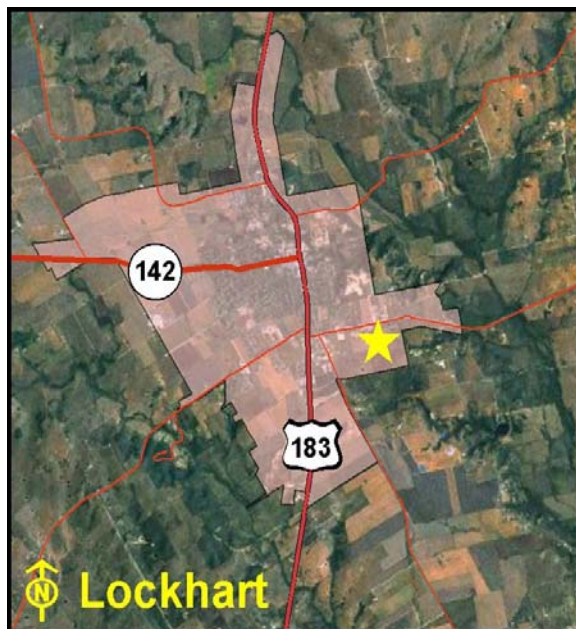
Volume 189, Page 888, Caldwell County Official Records

**Encumbrances**

Physical: None

Legal: Deed Restrictions: None

Easements: Utility



Location Map

Acres: ..... 31.13

Bldgs.: .....9 Bldg Sq Ft ..... 295,065 sq.ft.

Sen. Dist.:.....21 Rep. Dist.:.....17 FAR:..... 0.22

% in Floodplain:..... 0% Slope:.....Level

Zoning: .....Industrial

Frontage: .....Industrial Blvd

Utilities: .....Electricity, Gas, Telephone, Wastewater, Water

Surrounding Uses: .....Industrial, Residential, Agricultural

Current Use: .....State Prison Facility

Highest and Best Use: .....State Prison Facility

Agency Projected Use: .....State Prison Facility

The Texas Department of Criminal Justice utilizes this site as a prison facility. It is located southeast of Lockhart on Industrial Boulevard. The site is improved with nine buildings, security fencing and lighting, recreational areas and concrete parking. The surrounding land uses include agricultural, industrial and residential development.

**Recommendation:**

***Retain for continued agency operations.***

## Texas General Land Office

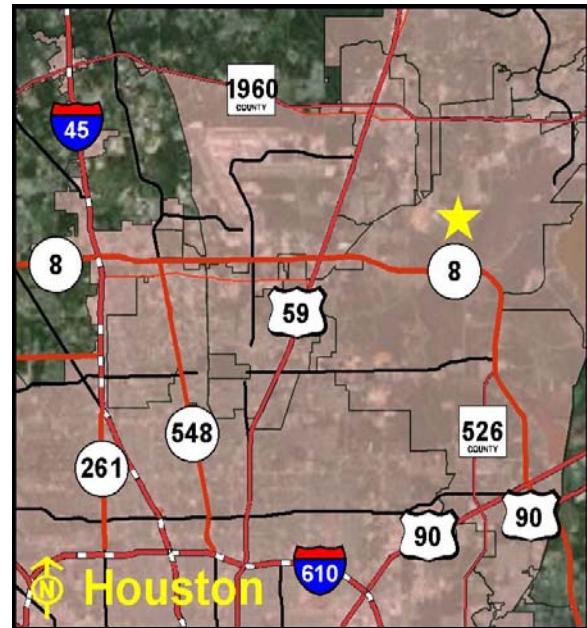
## Lychner Unit

**Location:**

2350 Atascocita Road, Humble, Harris County, Texas

**Legal Description:**

Volume 5488, Page 370, Harris County Official Records

**Encumbrances****Physical:** None**Legal:** *Deed Restrictions:* Reversion Clause*Easements:* Utility

Location Map

**Acres:** ..... 63.97**Sen. Dist.:**.....15 **Rep. Dist.:**...142 **FAR:**..... 0.11**Bldgs.:** .....13 **Bldg Sq Ft** ..... 302,095 sq.ft.**% in Floodplain:**..... 0% **Slope:**.....Level**Zoning:** .....Unzoned**Frontage:** .....Atascocita Road**Utilities:** .....Electricity, Gas, Telephone, Wastewater, Water**Surrounding Uses:** .....Agricultural, Governmental**Current Use:** .....Correctional Facility**Highest and Best Use:** .....Correctional Facility**Agency Projected Use:** .....Correctional Facility

The Texas Department of Criminal Justice utilizes this site as a correctional facility. It is located on Atascocita Road in Humble. The site is improved with 13 buildings, guard shacks, paved parking, fencing and security lighting. The surrounding land uses include agricultural and governmental development.

**Recommendation:*****Retain for continued agency operations.***



## Texas General Land Office

## Lynaugh Unit

**Location:**

Old Alpine Highway, Fort Stockton, Pecos County,  
Texas

**Legal Description:**

Volume 643, Page 749, Pecos County Deed Records

**Encumbrances**

**Physical:** None

**Legal:** *Deed Restrictions:* None

*Easements:* Utility, Pipeline



Location Map

**Acres:** .....1,312.43

**Bldgs.:** .....24 **Bldg Sq Ft** ..... 296,161 sq.ft.

**Sen. Dist.:**.....19 **Rep. Dist.:**.....74 **FAR:**..... 0.01

**% in Floodplain:**..... 0% **Slope:**.....Level

**Zoning:** .....Unzoned

**Frontage:** .....Old Alpine Highway

**Utilities:** .....Electricity, Telephone, Wastewater, Water

**Surrounding Uses:** .....Agricultural, Rangeland

**Current Use:** .....State Prison Facility

**Highest and Best Use:** .....State Prison Facility

**Agency Projected Use:** .....State Prison Facility

The Texas Department of Criminal Justice utilizes this site as a prison facility and for irrigated farming. It is located 13 miles southwest of Fort Stockton on Old Alpine Highway. The site is improved with 24 buildings, perimeter and interior fencing, paved parking and security lighting. The surrounding land uses include native rangeland and agricultural development.

**Recommendation:**

***Retain for continued agency operations.***

## Texas General Land Office

## Marlin Unit

## Location:

2893 SH 6, Marlin, Falls County, Texas

## Legal Description:

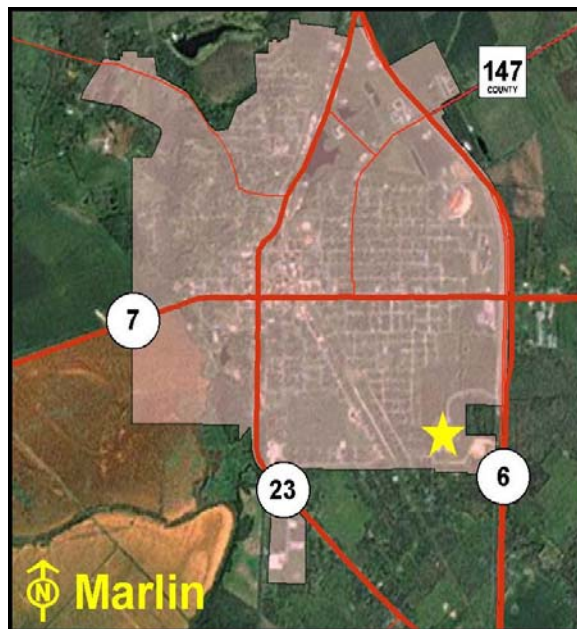
Volume 338, Page 940, Falls County Official Records

## Encumbrances

Physical: None

Legal: Deed Restrictions: None

Easements: Access, Utility



Location Map

Acres: ..... 25.00

Bldgs.: .....18 Bldg Sq Ft ..... 102,018 sq.ft.

Sen. Dist.:.....22 Rep. Dist.:.....12 FAR:..... 0.09

% in Floodplain:..... 0% Slope:.....Level

Zoning: .....Unzoned

Frontage: .....SH 6 Bypass

Utilities: .....Electricity, Gas, Telephone, Wastewater, Water

Surrounding Uses: .....Commercial, Residential, Vacant, None

Current Use: .....State Prison Facility

Highest and Best Use: .....State Prison Facility

Agency Projected Use: .....State Prison Facility

The Texas Department of Criminal Justice utilizes this site as a prison facility. It is located half mile south of the SH 6 and SH 7 overpass east of Marlin. The site is improved with 18 buildings, perimeter security fencing and chain-link gates, security lights and concrete parking. The surrounding land uses include vacant land, commercial and residential development.

## Recommendation:

*Retain for continued agency operations.*



## Texas General Land Office

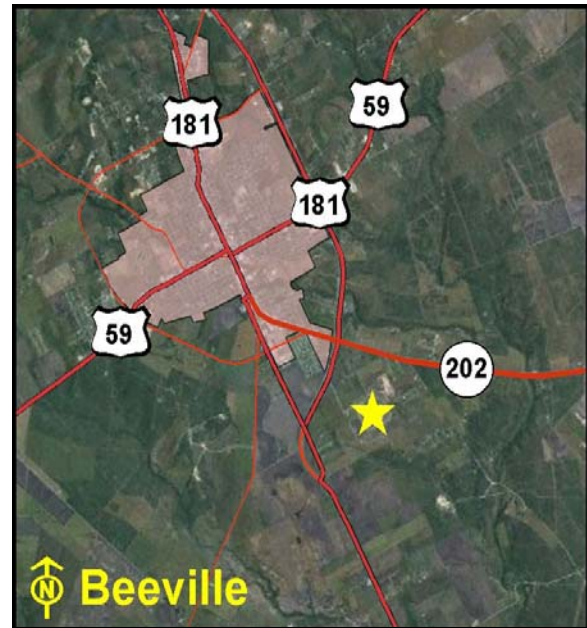
## McConnell Unit

**Location:**

3001 South Emily Drive, Beeville, Bee County, Texas

**Legal Description:**

Volume 467, Pages 243, 284, 294, Bee County Official Records

**Encumbrances****Physical:** None**Legal:** *Deed Restrictions:* None*Easements:* Utility

Location Map

**Acres:** ..... 298.85**Bldgs.:** .....24 **Bldg Sq Ft** ..... 897,517 sq.ft.**Sen. Dist.:**.....21 **Rep. Dist.:**.....43 **FAR:**..... 0.07**% in Floodplain:**..... 0% **Slope:**.....Level**Zoning:** .....Unzoned**Frontage:** .....Emily Dr**Utilities:** .....Electricity, Gas, Telephone, Wastewater, Water**Surrounding Uses:** .....Residential, Agricultural, Ranching**Current Use:** .....Correctional Facility**Highest and Best Use:** .....Correctional Facility/Agriculture**Agency Projected Use:** .....Correctional Facility

The Texas Department of Criminal Justice utilizes this site as a correctional facility. It is located south of Beeville on Emily Drive. The site is improved with 24 buildings, guard towers, chain-link perimeter fencing, security lighting and concrete parking. The surrounding land uses include ranching, agricultural and residential developments.

**Recommendation:*****Retain for continued agency operations.***

## Texas General Land Office

## Montford Unit

## Location:

8602 Peach Street, Lubbock, Lubbock County, Texas

## Legal Description:

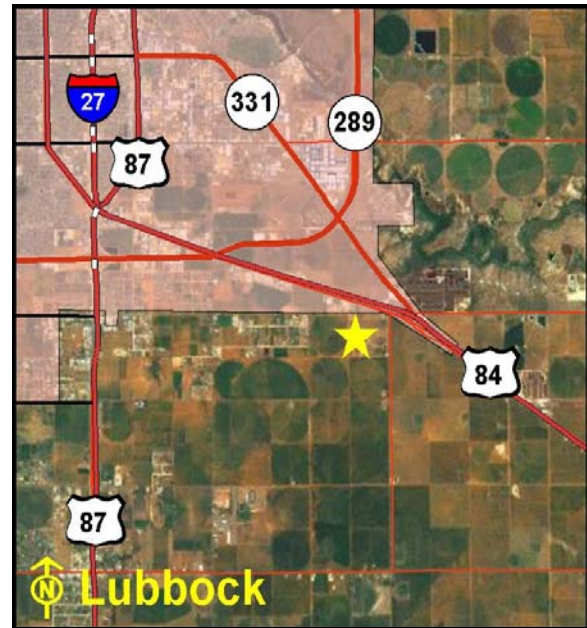
Volume 3951, Page 53, Volume 3968, Page 20,  
Lubbock County Deed Records

## Encumbrances

Physical: Floodplain

Legal: Deed Restrictions: None

Easements: Utility, Pipeline



Location Map

Acres: .....1,303.50

Sen. Dist.:.....28 Rep. Dist.:.....84 FAR:..... 0.01

Bldgs.: .....17 Bldg Sq Ft ..... 281,377 sq.ft.

% in Floodplain:..... 2% Slope:.....Level

Zoning: .....Unzoned

Frontage: .....US Hwy 84, FM 3431

Utilities: .....Electricity, Gas, Telephone, Wastewater, Water

Surrounding Uses: .....Agricultural, Residential, Commercial, Industrial

Current Use: .....State Prison Facility/Agricultural

Highest and Best Use: .....State Prison Facility/Agricultural

Agency Projected Use: .....State Prison Facility/Agricultural

The Texas Department of Criminal Justice utilizes this site as a prison facility and for agricultural production. It is located in Lubbock on Peach Street with frontage along US Highway 84 and FM 3431. The site is improved with 17 buildings, chain-link barb wire fencing, security lighting and concrete parking. The surrounding land uses include agricultural, industrial, commercial and residential developments.

## Recommendation:

*Retain for continued agency operations.*

## Texas General Land Office

## Mountain View Unit

**Location:**

2305 Ransom Road, Gatesville, Coryell County,  
Texas

**Legal Description:**

Volume 456, Page 697, Coryell County Deed Records

**Encumbrances**

Physical: None

Legal: Deed Restrictions: None

Easements: Utility



Location Map

Acres: ..... 96.44

Bldgs.: .....35 Bldg Sq Ft ..... 245,089 sq.ft.

Sen. Dist.:.....24 Rep. Dist.:.....59 FAR:..... 0.06

% in Floodplain:..... 0% Slope:.....Level

Zoning: .....Civic

Frontage: .....FM 929, FM 215

Utilities: .....Electricity, Gas, Telephone, Wastewater, Water

Surrounding Uses: .....Agricultural, Governmental, Residential, Commercial

Current Use: .....State Prison Facility/Agricultural

Highest and Best Use: .....State Prison Facility/Agricultural

Agency Projected Use: .....State Prison Facility/Agricultural

The Texas Department of Criminal Justice utilizes this site as a prison facility and for agricultural production. It is located north of Gatesville on Ransom Road. The site is improved with 35 buildings, concrete parking, security fencing and lighting. The surrounding land uses include agricultural, residential, governmental and commercial developments.

**Recommendation:**

***Retain for continued agency operations.***

## Texas General Land Office

## Ney Unit

**Location:**

118 Richter Lane (114 Private Road 4303), Hondo,  
Medina County, Texas

**Legal Description:**

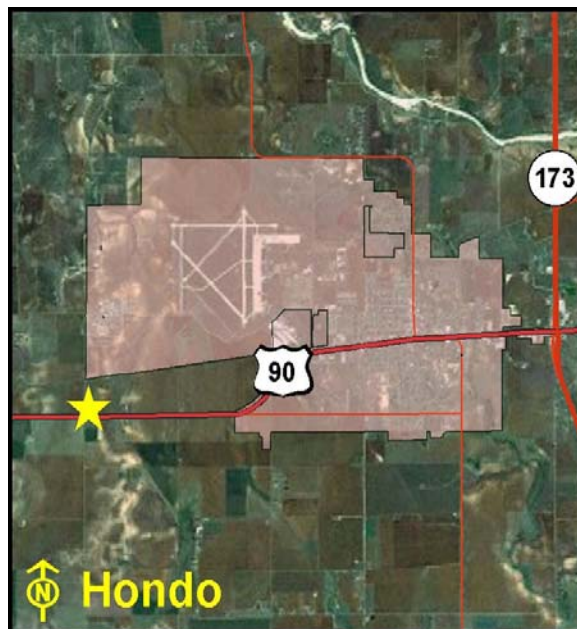
Volume 216, Page 1054, Medina County Official  
Records

**Encumbrances**

**Physical:** None

**Legal:** *Deed Restrictions:* None

*Easements:* Utility



Location Map

**Acres:** ..... 24.44

**Sen. Dist.:**.....19 **Rep. Dist.:**.....53 **FAR:**..... 0.08

**Bldgs.:** .....5 **Bldg Sq Ft** ..... 82,205 sq.ft.

**% in Floodplain:**..... 0% **Slope:**.....Level

**Zoning:** .....Mixed-Use

**Frontage:** .....CR 424/Richter Ln

**Utilities:** .....Electricity, Gas, Telephone, Wastewater, Water

**Surrounding Uses:** .....Agricultural, Industrial, Governmental

**Current Use:** .....State Prison Facility

**Highest and Best Use:** .....State Prison Facility

**Agency Projected Use:** .....State Prison Facility

The Texas Department of Criminal Justice utilizes this site as a prison facility. It is located west of the Hondo Municipal Airport, on CR 424 (Richter Lane) in Hondo. The site is improved with five buildings, security fencing, exterior lighting, security perimeter roads and concrete parking. The surrounding land uses include the Torres Unit, Hondo Municipal Airport, industrial and agricultural developments.

**Recommendation:**

***Retain for continued agency operations.***



## Texas General Land Office

## Pack/Luther Units

## Location:

FM 1227, Navasota, Grimes County, Texas

## Legal Description:

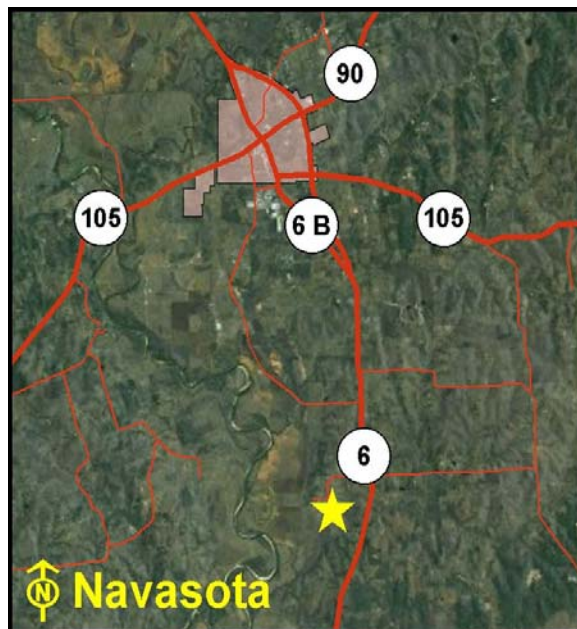
Volume 101, Page 839, Volume 450, Page 421,  
Volume 416, Pages 493, 513, 523, 532, 546, Volume  
986, Page 172, Volume 297, Page 839, Grimes  
County Official Records

## Encumbrances

Physical: Floodplain

Legal: Deed Restrictions: None

Easements: Utility



Location Map

Acres: .....7,002.00

Sen. Dist.:.....5 Rep. Dist.:.....13 FAR:..... 0.01

Bldgs.: .....104 Bldg Sq Ft ..... 519,604 sq.ft.

% in Floodplain:..... 90% Slope:.....Level

Zoning: .....Unzoned

Frontage: .....FM 1227

Utilities: .....Electricity, Gas, Telephone, Wastewater, Water

Surrounding Uses: .....Agricultural, Ranching, Residential

Current Use: .....State Prison Facilities/Agricultural

Highest and Best Use: .....State Prison Facilities/Agricultural

Agency Projected Use: .....State Prison Facilities/Agricultural

The Texas Department of Criminal Justice utilizes these sites as prison facilities and for agricultural production. It is located along FM 1227, south of Navasota. The sites together are improved with 104 buildings, security fencing, a sewer treatment plant, water supply tower and tank, security lighting and concrete parking. The surrounding land uses include ranching and agricultural and residential development. Approximately 6,300 acres lie in a floodplain.

## Recommendation:

*Retain for continued agency operations.*

## Texas General Land Office

## Polunsky Unit

**Location:**

12002 F.M. 350 South, Livingston, Polk County,  
Texas

**Legal Description:**

Volume 786, Page 801, Volume 798, Page 498, Polk  
County Deed Records

**Encumbrances**

**Physical:** None

**Legal:** *Deed Restrictions:* None

*Easements:* Utility



Location Map

**Acres:** ..... 472.25

**Sen. Dist.:**.....3 **Rep. Dist.:**.....19 **FAR:**..... 0.04

**Bldgs.:** .....27 **Bldg Sq Ft** ..... 848,044 sq.ft.

**% in Floodplain:**..... 0% **Slope:**.....Level

**Zoning:** .....Unzoned

**Frontage:** .....F.M. 350

**Utilities:** .....Electricity, Gas, Telephone, Wastewater, Water

**Surrounding Uses:** .....Residential, Governmental, Industrial

**Current Use:** .....State Prison Facility

**Highest and Best Use:** .....State Prison Facility

**Agency Projected Use:** .....State Prison Facility

The Texas Department of Criminal Justice utilizes this site as a prison facility. It is located on FM 350 South in Livingston. The site is improved with 27 buildings, concrete parking, electrified and security fencing. The surrounding land uses include residential, governmental and light industrial developments.

**Recommendation:**

***Retain for continued agency operations.***



## Texas General Land Office

## Ramsey/Stringfellow/Terrell Units

**Location:**

FM 655, Rosharon, Brazoria County, Texas

**Legal Description:**

S.F. Austin Survey A-25, John Hall Surveys A-67 &amp; A-68, and Stephen Richardson Survey A-122, Brazoria County Official Records

**Encumbrances****Physical:** Floodplain**Legal:** *Deed Restrictions:* None*Easements:* Pipeline, Utility

Location Map

**Acres:** ....14,643.95**Bldgs.:** .....175 **Bldg Sq Ft** .....1,342,015 sq.ft.**Sen. Dist.:**.....11 **Rep. Dist.:**.....25 **FAR:**..... 0.01**% in Floodplain:**..... 70% **Slope:** .....Moderate**Zoning:** .....Unzoned**Frontage:** .....FM 521, FM 655**Utilities:** .....Electricity, Gas, Telephone, Wastewater, Water**Surrounding Uses:** .....Rangeland, Agricultural**Current Use:** .....State Prison Facilities/Agricultural**Highest and Best Use:** .....State Prison Facilities/Agricultural**Agency Projected Use:** .....State Prison Facilities/Agricultural

The Texas Department of Criminal Justice utilizes this site as prison facilities and for agricultural production. It is located in Rosharon on FM 655. The site is improved with 175 buildings, security fencing, a wastewater facility, recreational areas, security lighting and concrete parking. The surrounding land uses include rangeland and agricultural developments.

**Recommendation:*****Retain for continued agency operations.***

## Texas General Land Office

## Region V Headquarters

**Location:**

300 West 6th Street, Plainview, Hale County, Texas

**Legal Description:**

Lots 6, 7, 8 and 9, Block 45 of the Original Town of Plainview, Hale County Deed Records

**Encumbrances****Physical:** None**Legal:** *Deed Restrictions:* Reversion Clause*Easements:* Utility

Location Map

**Acres:** ..... 0.60**Bldgs.:** .....1 **Bldg Sq Ft** ..... 18,543 sq.ft.**Sen. Dist.:**.....28 **Rep. Dist.:**.....88 **FAR:**..... 0.71**% in Floodplain:**..... 0% **Slope:**.....Level**Zoning:** .....Commercial**Frontage:** .....West 6th St, Baltimore St**Utilities:** .....Electricity, Gas, Telephone, Wastewater, Water**Surrounding Uses:** .....Commercial**Current Use:** .....Regional Headquarters**Highest and Best Use:** .....Commerical**Agency Projected Use:** .....Regional Headquarters

The Texas Department of Criminal Justice utilizes this site as a regional headquarters. It is located in Plainview at the corner of West 6th and Baltimore Street. The site is improved with one building and concrete parking. The surrounding land use is primarily commercial development. The existing reversion clause calls for the return of the property to the City of Plainview if not utilized by TDCJ or any agency of the State of Texas for a public purpose or purposes that will creat or maintain the employment of approximately 15 persons.

**Recommendation:*****Retain for continued agency operations.***

## Texas General Land Office

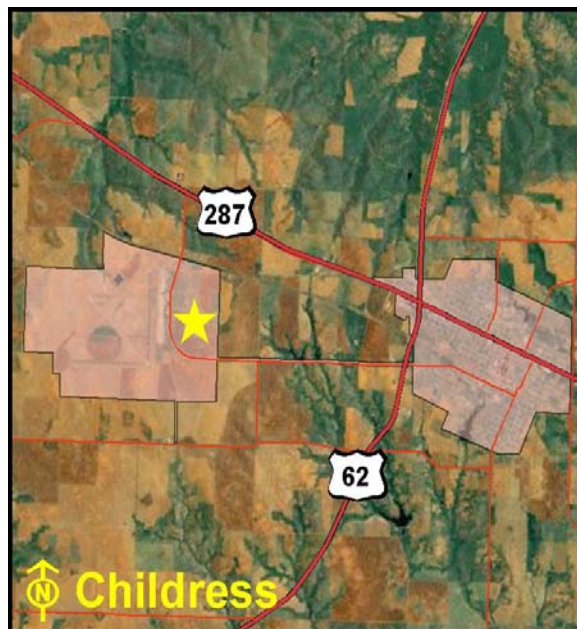
## Roach Unit

**Location:**

FM 164, Childress, Childress County, Texas

**Legal Description:**

Volume 358, Page 338, Childress County Deed Records

**Encumbrances****Physical:** None**Legal:** *Deed Restrictions:* Mineral Rights Reserved*Easements:* Utility

Location Map

**Acres:** .....1,651.00**Bldgs.:** .....34 **Bldg Sq Ft** ..... 545,397 sq.ft.**Sen. Dist.:**.....28 **Rep. Dist.:**.....68 **FAR:**..... 0.01**% in Floodplain:**..... 0% **Slope:**.....Level**Zoning:** .....Unzoned**Frontage:** .....FM 164, FM 3522**Utilities:** .....Electricity, Gas, Telephone, Wastewater, Water**Surrounding Uses:** .....Agricultural**Current Use:** .....State Prison Facility/Agricultural**Highest and Best Use:** .....State Prison Facility/Agricultural**Agency Projected Use:** .....State Prison Facility/Agricultural

The Texas Department of Criminal Justice utilizes this site as a prison facility and for agricultural production. It is located on FM 164 west of Childress. The site is improved with 34 buildings, chain-link fencing, security lighting and concrete parking. The surrounding land uses include mainly agricultural developments. A majority of the property is leased for cultivated cropland.

**Recommendation:*****Retain for continued agency operations.***

## Texas General Land Office

## Robertson/Middleton Units

**Location:**

12071 & 13055 FM 3522, Abilene, Taylor County,  
Texas

**Legal Description:**

Volume 448, Page 445, Volume 450, Page 573,  
Volume 454, Page 217, Volume 471, Page 114, Jones  
County Deed Records

**Encumbrances**

**Physical:** None

**Legal:** *Deed Restrictions:* None

*Easements:* Utility



Location Map

**Acres:** ..... 402.23

**Bldgs.:** .....45 **Bldg Sq Ft** .....1,255,521 sq.ft.

**Sen. Dist.:**.....28 **Rep. Dist.:**.....71 **FAR:**..... 0.07

**% in Floodplain:**..... 0% **Slope:**.....Level

**Zoning:** .....Unzoned

**Frontage:** .....FM 3522

**Utilities:** .....Electricity, Gas, Telephone, Wastewater, Water

**Surrounding Uses:** .....Agricultural, Residential

**Current Use:** .....State Prison Facilities/Agricultural

**Highest and Best Use:** .....State Prison Facilities/Agricultural

**Agency Projected Use:** .....State Prison Facilities/Agricultural

The Texas Department of Criminal Justice utilizes these sites as prison facilities and for agricultural production. Both units are located on FM 3522 northeast of Abilene. The sites are improved with 45 buildings, interior/exterior security fencing, security lighting and concrete parking. The surrounding land uses include agricultural and residential developments. The majority of the property is currently being utilized for hay production.

**Recommendation:**

***Retain for continued agency operations.***



## Texas General Land Office

## Rudd Unit

**Location:**

2004 Lamesa Highway (SH 137), Brownfield, Terry County, Texas

**Legal Description:**

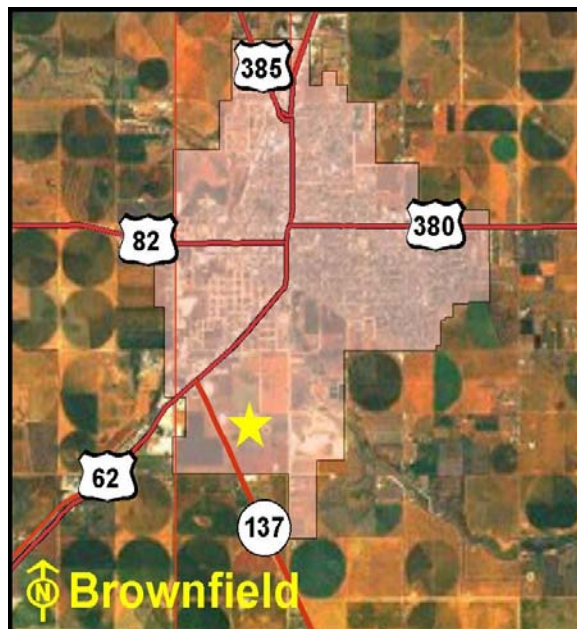
File No. 192147, Terry County Deed Records

**Encumbrances**

**Physical:** Floodplain

**Legal:** Deed Restrictions: None

Easements: Utility, Access



Location Map

**Acres:** ..... 303.85

**Sen. Dist.:**.....28 **Rep. Dist.:**.....83 **FAR:**..... 0.01

**Bldgs.:** .....13 **Bldg Sq Ft** ..... 97,604 sq.ft.

**% in Floodplain:**..... 2% **Slope:**.....Level

**Zoning:** .....Industrial

**Frontage:** .....SH 137, CR 395

**Utilities:** .....Electricity, Gas, Telephone, Wastewater, Water

**Surrounding Uses:** .....Agricultural, Industrial, Governmental, Residential

**Current Use:** .....State Prison Facility/Agricultural

**Highest and Best Use:** .....State Prison Facility/Agricultural

**Agency Projected Use:** .....State Prison Facility/Agricultural

The Texas Department of Criminal Justice utilizes this site as a prison facility and for agricultural production. It is located in South Brownfield on SH 137. The site is improved with 13 buildings, security fencing and lighting and concrete parking. The surrounding land uses include agricultural, industrial, commercial, governmental and residential developments.

**Recommendation:**

***Retain for continued agency operations.***

## Texas General Land Office

## San Saba Unit

**Location:**

206 South Wallace Creek Road (FM 1030), San Saba,  
San Saba County, Texas

**Legal Description:**

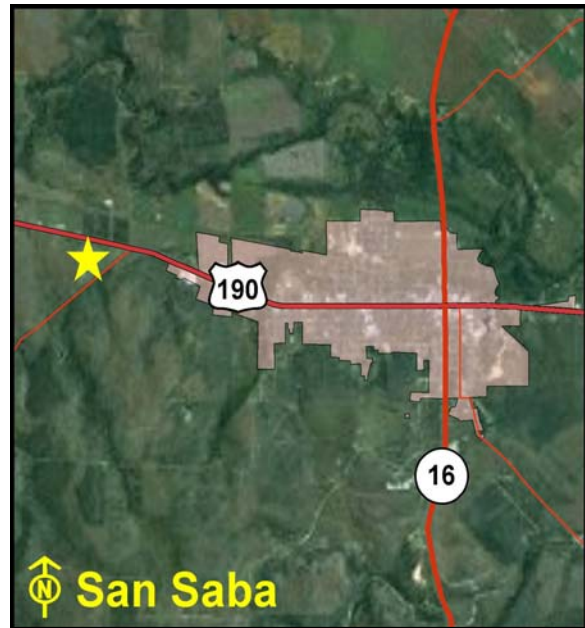
Volume 306, Page 871, San Saba County Official  
Records

**Encumbrances**

**Physical:** None

**Legal:** *Deed Restrictions:* Restricted Use

*Easements:* Utility, None



Location Map

**Acres:** ..... 25.00

**Bldgs.:** .....3 **Bldg Sq Ft** ..... 99,333 sq.ft.

**Sen. Dist.:**.....24 **Rep. Dist.:**.....59 **FAR:**..... 0.09

**% in Floodplain:**..... 0% **Slope:**.....Level

**Zoning:** .....Mixed-Use

**Frontage:** .....FM 1030

**Utilities:** .....Electricity, Wastewater, Water

**Surrounding Uses:** .....Residential, Ranching, None, None

**Current Use:** .....State Prison Facility

**Highest and Best Use:** .....State Prison Facility

**Agency Projected Use:** .....State Prison Facility

The Texas Department of Criminal Justice recently purchased this site from the Texas Youth Commission and utilizes it as a prison facility. It is located on South Wallace Creek Road (FM 1030) in San Saba. The site is improved with three buildings, security fencing, exterior lighting and concrete parking. The surrounding land uses include ranchland and residential developments. There is a deed restriction stating that the site can only be used for public/semi-public/institutional use.

**Recommendation:**

***Retain for continued agency operations.***



## Texas General Land Office

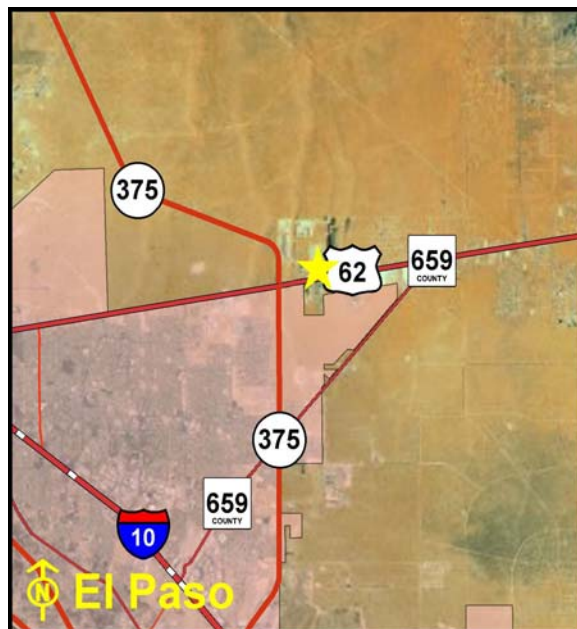
## Sanchez Unit

**Location:**

3901 State Jail Road, El Paso, El Paso County, Texas

**Legal Description:**

File 94-67027, El Paso County Official Records

**Encumbrances****Physical:** None**Legal:** *Deed Restrictions:* Restricted Use*Easements:* Utility

Location Map

**Acres:** ..... 102.00**Sen. Dist.:**.....29 **Rep. Dist.:**.....79 **FAR:**..... 0.04**Bldgs.:** .....11 **Bldg Sq Ft** ..... 170,708 sq.ft.**% in Floodplain:**..... 0% **Slope:**.....Level**Zoning:** .....Unzoned**Frontage:** .....State Jail Road**Utilities:** .....Electricity, Gas, Telephone, Wastewater, Water**Surrounding Uses:** .....Residential, Governmental, Vacant, Industrial**Current Use:** .....State Prison Facility**Highest and Best Use:** .....State Prison Facility**Agency Projected Use:** .....State Prison Facility

The Texas Department of Criminal Justice utilizes this site as a prison facility. It is located northeast of El Paso on State Jail Road. The site is improved with 11 buildings, a water tower, security fencing and lighting and concrete parking. The surrounding land uses include governmental, industrial and residential development. There is a deed restriction on a 9.669 acre tract which prevents the drilling of a water well.

**Recommendation:*****Retain for continued agency operations.***

## Texas General Land Office

## Sayle Unit

**Location:**

FM 1800 North, Breckenridge, Stephens County,  
Texas

**Legal Description:**

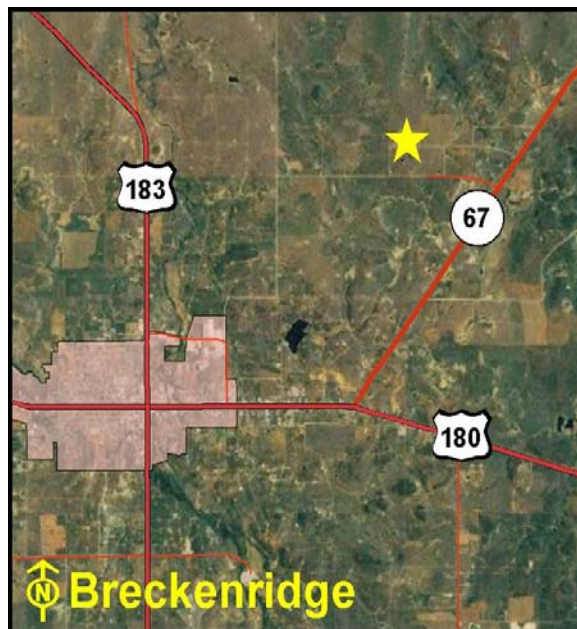
Volume 1071, Page 186, Stephens County Official  
Records

**Encumbrances**

**Physical:** None

**Legal:** *Deed Restrictions:* None

*Easements:* Utility



Location Map

**Acres:** ..... 402.36

**Sen. Dist.:**.....28 **Rep. Dist.:**.....60 **FAR:**..... 0.01

**Bldgs.:** .....10 **Bldg Sq Ft** ..... 115,508 sq.ft.

**% in Floodplain:**..... 0% **Slope:**.....Level

**Zoning:** .....Unzoned

**Frontage:** .....FM 1800

**Utilities:** .....Electricity, Gas, Telephone, Wastewater, Water

**Surrounding Uses:** .....Ranching, Agricultural

**Current Use:** .....State Prison Facility/Agricultural

**Highest and Best Use:** .....State Prison Facility/Agricultural

**Agency Projected Use:** .....State Prison Facility/Agricultural

The Texas Department of Criminal Justice utilizes this site as a prison facility and for agricultural production. It is located along FM 1800 northwest of Breckenridge. The site is improved with 10 buildings, security fencing and lighting and parking. The surrounding land uses include ranching and agricultural developments.

**Recommendation:**

***Retain for continued agency operations.***

## Texas General Land Office

## Scott Unit

**Location:**

CR 290 @ State Highway 288, Angleton, Brazoria County, Texas

**Legal Description:**

Volume 145, Page 242, Brazoria County Deed Records

**Encumbrances**

**Physical:** Floodplain

**Legal:** *Deed Restrictions:* None

*Easements:* Pipeline, ROW



Location Map

**Acres:** .....5,766.41

**Sen. Dist.:**.....17 **Rep. Dist.:**.....25 **FAR:**..... 0.01

**Bldgs.:** .....54 **Bldg Sq Ft** ..... 272,908 sq.ft.

**% in Floodplain:**..... 60% **Slope:** .....Moderate

**Zoning:** .....Unzoned

**Frontage:** .....SH 288, CR 290

**Utilities:** .....Electricity, Gas, Telephone, Wastewater, Water

**Surrounding Uses:** .....Agricultural, Residential, Commercial

**Current Use:** .....State Prison Facility/Agricultural

**Highest and Best Use:** .....State Prison Facility/Agricultural

**Agency Projected Use:** .....State Prison Facility/Agricultural

The Texas Department of Criminal Justice utilizes this site as a prison facility and for agricultural production. It is located on SH 288 northwest of Lake Jackson with access on CR 290. The site is improved with 54 buildings, interior/exterior fencing, security lighting and concrete parking. The surrounding land uses include agricultural, commercial and residential developments.

**Recommendation:**

***Retain for continued agency operations.***

## Texas General Land Office

## Segovia/Lopez Units

**Location:**

1201 East Cibolo Road, Edinburg, Hidalgo County,  
Texas

**Legal Description:**

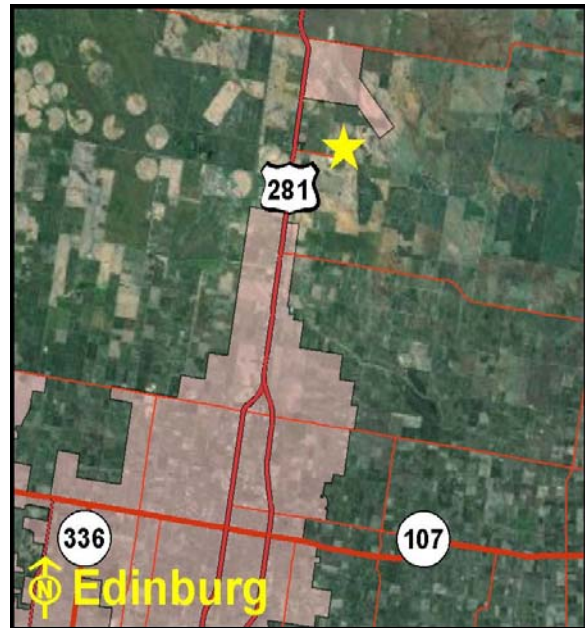
Volume 2, Page 46, Hidalgo County Deed Records

**Encumbrances**

Physical: None

Legal: Deed Restrictions: None

Easements: Utility, ROW



Location Map

Acres: ..... 300.00

Bldgs.: .....26 Bldg Sq Ft ..... 337,084 sq.ft.

Sen. Dist.:.....20 Rep. Dist.:.....40 FAR:..... 0.03

% in Floodplain:..... 0% Slope:.....Level

Zoning: .....Unzoned

Frontage: .....Cibolo Road

Utilities: .....Electricity, Gas, Telephone, Wastewater, Water

Surrounding Uses: .....Industrial, Agricultural, Governmental

Current Use: .....Correctional Facility

Highest and Best Use: .....Correctional Facility

Agency Projected Use: .....Correctional Facility

The Texas Department of Criminal Justice utilizes this site as a correctional facility. It is located east of U.S. HWY 281 on Cibolo Road in Edinburg. The site is improved with 26 buildings, paved parking, fencing and security lighting. The surrounding land uses include agricultural, industrial and governmental development.

**Recommendation:**

***Retain for continued agency operations.***



## Texas General Land Office

## Smith Unit

**Location:**

1313 County Road 19 (F.M. 827), Lamesa, Dawson County, Texas

**Legal Description:**

Volume 126, Page 185, Volume 426, Page 261, Dawson County Official Records

**Encumbrances**

Physical: None

Legal: Deed Restrictions: None

Easements: Utility



Location Map

Acres: ..... 562.58

Bldgs.: .....29 Bldg Sq Ft ..... 501,505 sq.ft.

Sen. Dist.:.....28 Rep. Dist.:.....82 FAR:..... 0.02

% in Floodplain:..... 0% Slope:.....Level

Zoning: .....Unzoned

Frontage: .....C.R. 19, C.R. 20

Utilities: .....Electricity, Gas, Telephone, Wastewater, Water

Surrounding Uses: .....Agricultural, Residential, Ranching

Current Use: .....State Prison Facility

Highest and Best Use: .....State Prison Facility

Agency Projected Use: .....State Prison Facility

The Texas Department of Criminal Justice utilizes this site as a prison facility. It is located east of Lamesa on County Road 19 (FM 827). The site is improved with 29 buildings, five oil wells, security fencing and lighting and concrete parking. The surrounding land uses include agricultural developments.

**Recommendation:**

***Retain for continued agency operations.***



## Texas General Land Office

## Snyder Distribution Center

**Location:**

201 North Kings Highway, Snyder, Scurry County,  
Texas

**Legal Description:**

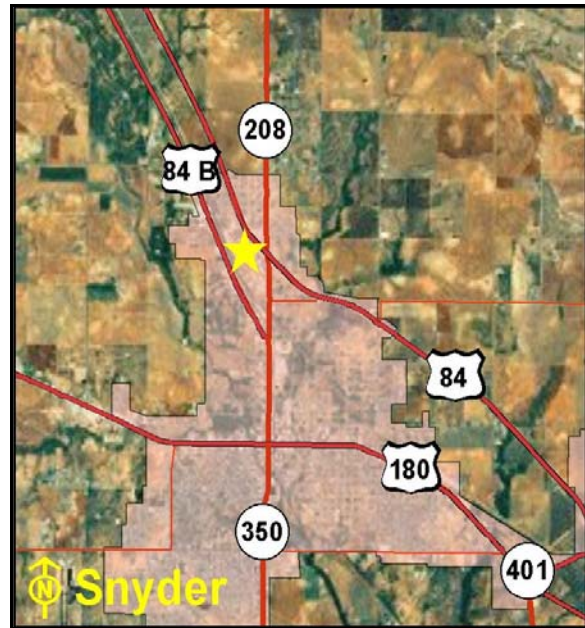
Volume 354, Page 238-240, Scurry County Official  
Records

**Encumbrances**

**Physical:** None

**Legal:** *Deed Restrictions:* None

*Easements:* Utility, Railroad



Location Map

**Acres:** ..... 20.00

**Bldgs.:** .....1 **Bldg Sq Ft** ..... 138,042 sq.ft.

**Sen. Dist.:**.....28 **Rep. Dist.:**.....83 **FAR:**..... 0.16

**% in Floodplain:**..... 0% **Slope:**.....Level

**Zoning:** .....Industrial

**Frontage:** .....North Kings Hwy, US Hwy 84

**Utilities:** .....Electricity, Gas, Telephone, Wastewater, Water

**Surrounding Uses:** .....Industrial, Commercial, Residential

**Current Use:** .....State Warehouse Distribution Center

**Highest and Best Use:** .....State Warehouse Distribution Center

**Agency Projected Use:** .....State Warehouse Distribution Center

The Texas Department of Criminal Justice utilizes this site as a warehouse distribution center. It is located on North Kings Highway in Northern Snyder. The site is improved with one building, security fencing and lights and concrete parking. The surrounding land uses include industrial, commercial and residential developments.

**Recommendation:**

***Retain for continued agency operations.***

## Texas General Land Office

## South Texas Unit

**Location:**

1511 Preston Avenue, Houston, Harris County, Texas

**Legal Description:**

Document No. 519-73-1932, Official Public Records of Harris County

**Encumbrances****Physical:** None**Legal:** Deed Restrictions: None

Easements: Utility



Location Map

**Acres:** ..... 0.54**Bldgs.:** .....1 **Bldg Sq Ft** ..... 63,845 sq.ft.**Sen. Dist.:**.....13 **Rep. Dist.:**...145 **FAR:**..... 2.72**% in Floodplain:**..... 0% **Slope:**.....Level**Zoning:** .....Unzoned**Frontage:** .....Preston Ave., Crawford St.**Utilities:** .....Electricity, Gas, Telephone, Wastewater, Water**Surrounding Uses:** .....Commercial, Recreational**Current Use:** .....State Correctional Facility**Highest and Best Use:** .....State Correctional Facility**Agency Projected Use:** .....State Correctional Facility

The Texas Department of Criminal Justice utilizes this site as a correctional facility. It is located at the corner of Preston Avenue and Crawford Street, in the central business district of Houston. The site is improved with a three-story correctional facility. The surrounding land uses are commercial and recreational development.

**Recommendation:*****Retain for continued agency operations.***

## Texas General Land Office

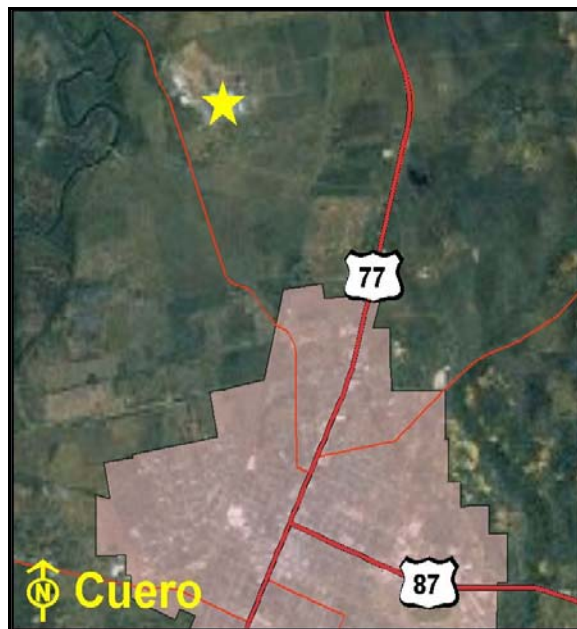
## Stevenson Unit

**Location:**

1525 FM 766, Cuero, DeWitt County, Texas

**Legal Description:**

Volume 360, Page 130, DeWitt County Deed Records

**Encumbrances****Physical:** Floodplain**Legal:** *Deed Restrictions:* Mineral Rights Reserved*Easements:* Utility

Location Map

**Acres:** ..... 464.03**Bldgs.:** .....27 **Bldg Sq Ft** ..... 392,099 sq.ft.**Sen. Dist.:**.....18 **Rep. Dist.:**.....30 **FAR:**..... 0.02**% in Floodplain:**..... 8% **Slope:**.....Level**Zoning:** .....Unzoned**Frontage:** .....FM 766**Utilities:** .....Electricity, Gas, Telephone, Wastewater, Water**Surrounding Uses:** .....Agricultural, Residential, Rangeland**Current Use:** .....State Prison Facility/Agricultural**Highest and Best Use:** .....State Prison Facility/Agricultural**Agency Projected Use:** .....State Prison Facility/Agricultural

The Texas Department of Criminal Justice utilizes this site as a prison facility and for agricultural production. It is located north of Cuero on FM 766. The site is improved with 27 buildings, interior and exterior security fencing, a basketball court, security lighting and concrete parking. The surrounding land uses include rangeland, and agricultural and residential development.

**Recommendation:*****Retain for continued agency operations.***

## Texas General Land Office

## Stiles/LeBlanc/Gist Units

**Location:**

3060, 3695, & 3295 FM 3514, Beaumont, Jefferson County, Texas

**Legal Description:**

Film Code 102-98-2207, Jefferson County Official Records

**Encumbrances**

**Physical:** None

**Legal:** *Deed Restrictions:* None

*Easements:* Utility



Location Map

**Acres:** ..... 775.55

**Bldgs.:** .....41 **Bldg Sq Ft** .....1,269,729 sq.ft.

**Sen. Dist.:**.....4 **Rep. Dist.:**.....22 **FAR:**..... 0.04

**% in Floodplain:**..... 0% **Slope:**.....Level

**Zoning:** .....Unzoned

**Frontage:** .....FM 3514

**Utilities:** .....Electricity, Gas, Telephone, Wastewater, Water

**Surrounding Uses:** .....Industrial, Agricultural, Governmental

**Current Use:** .....State Prison Facilities/Agricultural

**Highest and Best Use:** .....State Prison Facilities/Agricultural

**Agency Projected Use:** .....State Prison Facilities/Agricultural

The Texas Department of Criminal Justice utilizes these tracts as prison facilities and for agricultural production. All the sites are located on FM 3514 in Beaumont. The tracts are improved with 41 buildings, security fencing and lighting, recreational areas and concrete parking. The surrounding land uses include agricultural, industrial and governmental developments.

**Recommendation:**

***Retain for continued agency operations.***



## Texas General Land Office

## TDCJ Administrative Headquarters

**Location:**

Spur 59 off SH 75 North, Huntsville, Walker County,  
Texas

**Legal Description:**

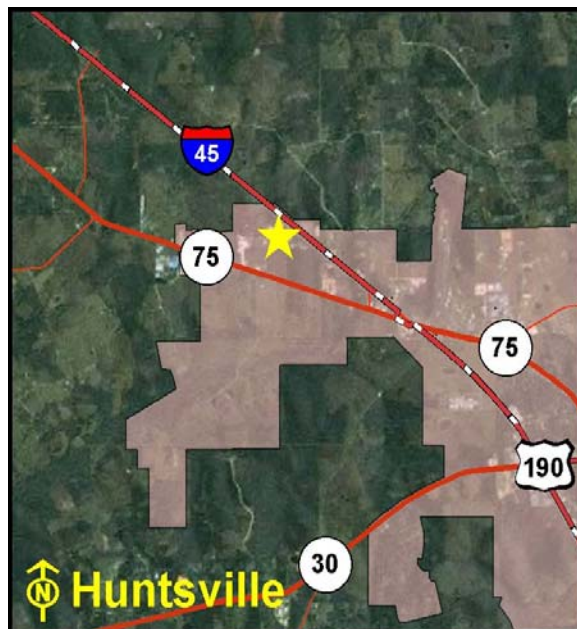
Volume 76, Page 271, Walker County Official Records

**Encumbrances**

Physical: None

Legal: Deed Restrictions: None

Easements: Utility



Location Map

Acres: ..... 72.55

Sen. Dist.: .....5 Rep. Dist.: .....18 FAR: ..... 0.12

Bldgs.: .....11 Bldg Sq Ft ..... 368,306 sq.ft.

% in Floodplain: ..... 0% Slope: .....Moderate

Zoning: .....Mixed-Use

Frontage: .....Spur 59

Utilities: .....Electricity, Gas, Telephone, Wastewater, Water

Surrounding Uses: .....Residential, Agricultural, Industrial

Current Use: .....State Prison Office Facility

Highest and Best Use: .....State Prison Office Facility

Agency Projected Use: .....State Prison Office Facility

The Texas Department of Criminal Justice utilizes this site as its administrative headquarters. It is located within the City of Huntsville on Spur 59 that connects to SH 75. The site is improved with 11 buildings, chain-link fencing, security lighting and concrete parking. The surrounding land use includes agricultural, industrial and residential developments.

**Recommendation:**

***Retain for continued agency operations.***



## Texas General Land Office

## Telford Unit

**Location:**

State Highway 98, New Boston, Bowie County, Texas

**Legal Description:**

Volume 1791, Page 185, Bowie County Deed Records

**Encumbrances****Physical:** Floodplain**Legal:** *Deed Restrictions:* None*Easements:* Utility

Location Map

**Acres:** .....1,205.79**Bldgs.:** .....37 **Bldg Sq Ft** .....1,104,485 sq.ft.**Sen. Dist.:** .....1 **Rep. Dist.:** .....1 **FAR:** ..... 0.02**% in Floodplain:** ..... 1% **Slope:** .....Level**Zoning:** .....Unzoned**Frontage:** .....SH 98**Utilities:** .....Electricity, Gas, Telephone, Wastewater, Water**Surrounding Uses:** .....Residential, Commercial, Vacant**Current Use:** .....State Prison Facility/Agricultural**Highest and Best Use:** .....State Prison Facility/Agricultural**Agency Projected Use:** .....State Prison Facility/Agricultural

The Texas Department of Criminal Justice utilizes this site as a prison and for agricultural development. It is located southwest of New Boston on the east side of State Highway 98. The site is improved with 37 buildings, interior/exterior chain-link fencing, security lighting, interior/exterior roads and concrete parking. The surrounding land uses include residential and commercial development.

**Recommendation:*****Retain for continued agency operations.***

## Texas General Land Office

## Torres Unit

**Location:**

125 Private Road 4303, Hondo, Medina County,  
Texas

**Legal Description:**

Volume 132, Page 771, Medina County Deed Records

**Encumbrances**

**Physical:** Floodplain

**Legal:** *Deed Restrictions:* None

*Easements:* Utility



Location Map

**Acres:** ..... 350.00

**Sen. Dist.:**.....19 **Rep. Dist.:**.....53 **FAR:**..... 0.02

**Bldgs.:** .....25 **Bldg Sq Ft** ..... 261,277 sq.ft.

**% in Floodplain:**..... 28% **Slope:**.....Level

**Zoning:** .....Civic

**Frontage:** .....CR 424/Richter Ln

**Utilities:** .....Electricity, Gas, Telephone, Wastewater, Water

**Surrounding Uses:** .....Residential, Industrial, Governmental, Agricultural

**Current Use:** .....State Prison Facility/Agricultural

**Highest and Best Use:** .....State Prison Facility/Agricultural

**Agency Projected Use:** .....State Prison Facility/Agricultural

The Texas Department of Criminal Justice utilizes this site as a prison facility and for agricultural production. It is located west of the the Hondo Municipal Airport on Private Road 4303 in Hondo. The site is improved with 25 buildings, security fencing and lighting and concrete parking. The surrounding land uses include agricultural and industrial developments, the Hondo Municipal Airport and the Ney Unit.

**Recommendation:**

***Retain for continued agency operations.***

## Texas General Land Office

## Travis County Unit

**Location:**

8601 E. Martin Luther King Jr. Blvd. (F.M. 969),  
Austin, Travis County, Texas

**Legal Description:**

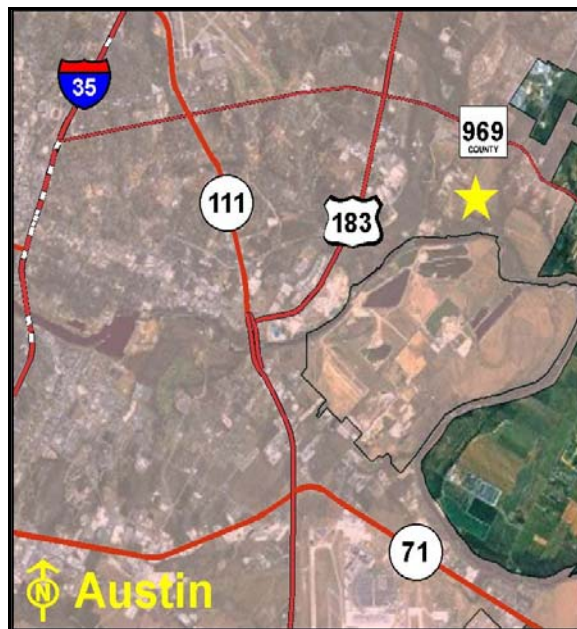
Volume 12257, Page 905, Travis County Official  
Records

**Encumbrances**

**Physical:** Floodplain

**Legal:** *Deed Restrictions:* None

*Easements:* Access, Utility



Location Map

**Acres:** ..... 95.04

**Sen. Dist.:**.....14 **Rep. Dist.:**.....46 **FAR:**..... 0.04

**Bldgs.:** .....12 **Bldg Sq Ft** ..... 169,040 sq.ft.

**% in Floodplain:**..... 50% **Slope:**.....Level

**Zoning:** .....Residential

**Frontage:** .....Martin Luther King Blvd.

**Utilities:** .....Electricity, Gas, Telephone, Wastewater, Water

**Surrounding Uses:** .....Residential, Agricultural, Industrial, Commercial

**Current Use:** .....State Prison Facility

**Highest and Best Use:** .....State Prison Facility

**Agency Projected Use:** .....State Prison Facility

The Texas Department of Criminal Justice utilizes this site as a prison facility. It is located on East Martin Luther King Boulevard (FM 969) in Austin. The site is improved with 12 buildings, security fencing and lighting and concrete parking. The surrounding land uses include agricultural, industrial, commercial and residential development.

**Recommendation:**

***Retain for continued agency operations.***

## Texas General Land Office

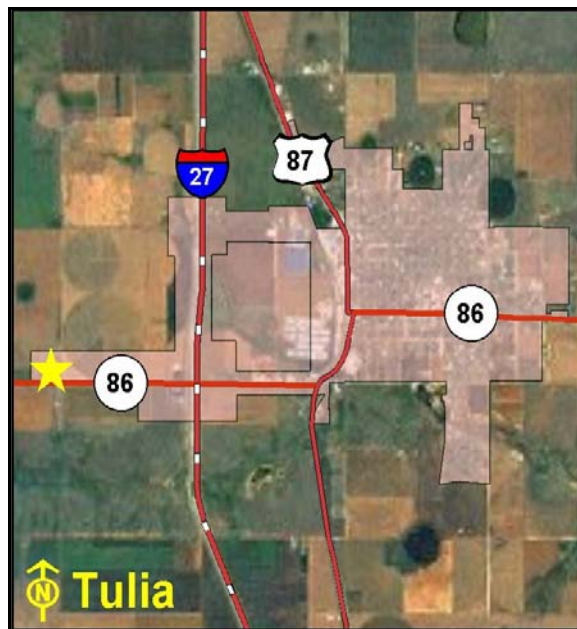
## Tulia Unit

**Location:**

4000 SH 86 West, Tulia, Swisher County, Texas

**Legal Description:**

Volume 52, Page 686, Swisher County Official Records

**Encumbrances****Physical:** None**Legal:** *Deed Restrictions:* None*Easements:* Utility

Location Map

**Acres:** ..... 25.00**Bldgs.:** .....3 **Bldg Sq Ft** ..... 79,681 sq.ft.**Sen. Dist.:**.....31 **Rep. Dist.:**.....88 **FAR:**..... 0.07**% in Floodplain:**..... 0% **Slope:**.....Level**Zoning:** .....Unzoned**Frontage:** .....SH 86**Utilities:** .....Electricity, Gas, Telephone, Wastewater, Water**Surrounding Uses:** .....Agricultural, Residential**Current Use:** .....State Prison Facility**Highest and Best Use:** .....State Prison Facility**Agency Projected Use:** .....State Prison Facility

The Texas Department of Criminal utilizes this site as a prison facility. It is located west of Tulia on State Highway 86. The site is improved with three buildings, security fencing and lighting and concrete parking. The surrounding land uses include agricultural and residential developments.

**Recommendation:*****Retain for continued agency operations.***



## Texas General Land Office

## Wallace/Ware Units

**Location:**

1675 County Road 202, Colorado City, Mitchell County, Texas

**Legal Description:**

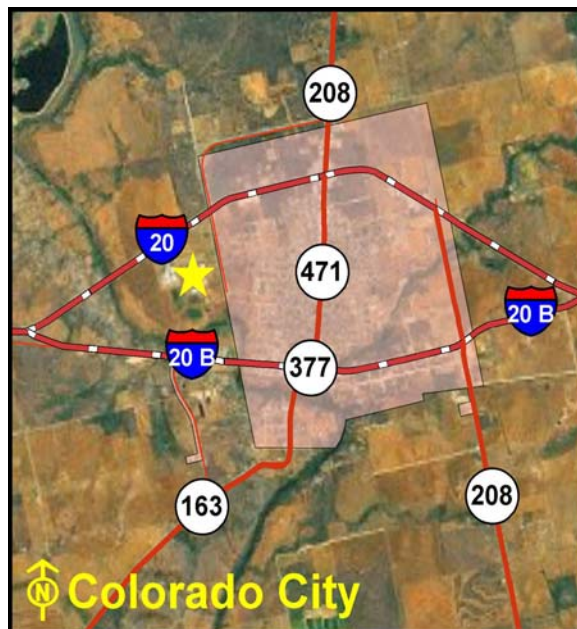
Volume 530, Page 326, Mitchell County Official Records

**Encumbrances**

**Physical:** Floodplain

**Legal:** Deed Restrictions: None

Easements: Conservation, Utility



Location Map

**Acres:** ..... 546.51

**Sen. Dist.:**.....28 **Rep. Dist.:**.....83 **FAR:**..... 0.02

**Bldgs.:** .....40 **Bldg Sq Ft** ..... 495,568 sq.ft.

**% in Floodplain:**..... 10% **Slope:** .....Moderate

**Zoning:** .....Mixed-Use

**Frontage:** .....IH 20, CR 202

**Utilities:** .....Electricity, Gas, Telephone, Wastewater, Water

**Surrounding Uses:** .....Residential, Agricultural, Industrial, Commercial

**Current Use:** .....State Prison Facilities/Agricultural

**Highest and Best Use:** .....State Prison Facilities/Agricultural

**Agency Projected Use:** .....State Prison Facilities/Agricultural

The Texas Department of Criminal Justice utilizes these sites as prison facilities and for agricultural production. The sites are composed of three parcels. Parcel A (435.4 acres) is located west of Colorado City and is unzoned. Parcel B (33.38 acres) is located inside the city limits and is zoned part commercial and part residential. Parcel C (77.723 acres) is located outside of the city limits on the Colorado River and is unzoned. The parcels are improved with 40 buildings, chain-link fencing, security lighting and concrete parking. The surrounding land uses include agricultural, industrial, commercial and residential development.

**Recommendation:**

***Retain for continued agency operations.***



## Texas General Land Office

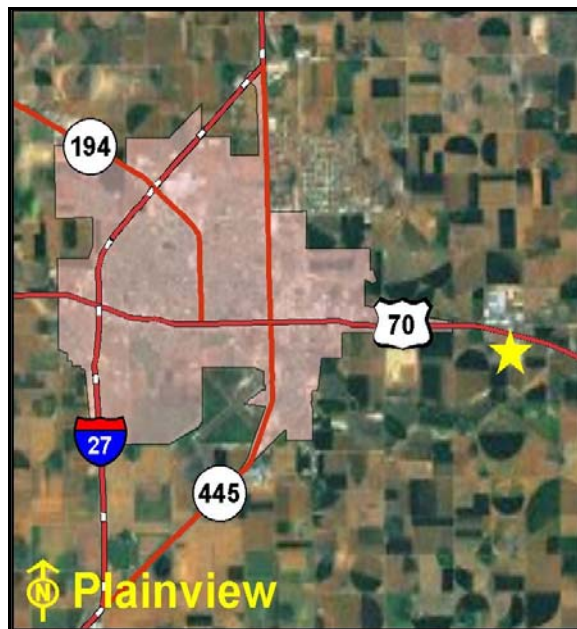
## Wheeler/Formby Units

**Location:**

986 and 998 CR AA, Plainview, Hale County, Texas

**Legal Description:**

Volume 826, Page 485, Hale County Official Records

**Encumbrances****Physical:** None**Legal:** *Deed Restrictions:* None*Easements:* Utility

Location Map

**Acres:** ..... 601.63**Sen. Dist.:**.....28 **Rep. Dist.:**.....88 **FAR:**..... 0.01**Bldgs.:** .....37 **Bldg Sq Ft** ..... 303,251 sq.ft.**% in Floodplain:**..... 27% **Slope:**.....Level**Zoning:** .....Unzoned**Frontage:** .....CR AA**Utilities:** .....Electricity, Gas, Telephone, Wastewater, Water**Surrounding Uses:** .....Agricultural, Commercial**Current Use:** .....State Prison Facilities/Agricultural**Highest and Best Use:** .....State Prison Facilities/Agricultural**Agency Projected Use:** .....State Prison Facilities/Agricultural

The Texas Department of Criminal Justice utilizes these sites as prison facilities and for agricultural production. They are located on CR AA in Plainview. The sites are improved with 37 buildings, perimeter fencing, recreational areas, security lighting and concrete parking. The surrounding land uses include agricultural and commercial developments.

**Recommendation:*****Retain for continued agency operations.***

## Texas General Land Office

## Willacy Unit

**Location:**

1695 South Buffalo Drive, Raymondville, Willacy County, Texas

**Legal Description:**

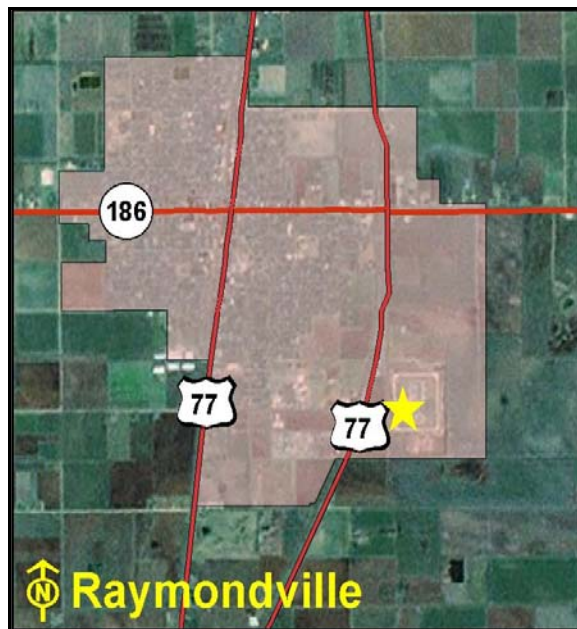
Volume 103, Page 222, Willacy County Official Records

**Encumbrances**

**Physical:** None

**Legal:** *Deed Restrictions:* None

*Easements:* Utility, ROW



Location Map

**Acres:** ..... 100.00

**Sen. Dist.:**.....27 **Rep. Dist.:**.....31 **FAR:**..... 0.04

**Bldgs.:** .....12 **Bldg Sq Ft** ..... 161,430 sq.ft.

**% in Floodplain:**..... 0% **Slope:**.....Level

**Zoning:** .....Agriculture

**Frontage:** .....South Buffalo Dr, U.S. Hwy 77

**Utilities:** .....Electricity, Gas, Telephone, Wastewater, Water

**Surrounding Uses:** .....Agricultural, Residential

**Current Use:** .....State Prison Facility

**Highest and Best Use:** .....State Prison Facility

**Agency Projected Use:** .....State Prison Facility

The Texas Department of Criminal Justice utilizes this site as a prison facility. It is located south of Raymondville on South Buffalo Drive. The site is improved with 12 buildings, paved parking, fences and security lighting. The surrounding land uses include agricultural and some residential development.

**Recommendation:**

***Retain for continued agency operations.***

## Texas General Land Office

## Wynne/Byrd (Diagnostic)/Holliday Units

**Location:**

IH 45, SH 75, FM 2821, FM 247, and FM 1791,  
Huntsville, Walker County, Texas

**Legal Description:**

Volume 112, Page 52, Volume 339, Page 1, Volume 335, Page 894, Volume 151, Page 259, Volume 403, Page 133, Volume Y, Page 181, Volume 371, Page 287, Volume 924, Page 785, Walker County Official

**Encumbrances**

**Physical:** Floodplain

**Legal:** Deed Restrictions: None

Easements: Utility



Location Map

**Acres:** .....1,401.87

**Sen. Dist.:**.....5 **Rep. Dist.:**.....18 **FAR:**..... 0.03

**Bldgs.:** .....169 **Bldg Sq Ft** .....1,781,975 sq.ft.

**% in Floodplain:**..... 5% **Slope:** .....Moderate

**Zoning:** .....Mixed-Use

**Frontage:** .....SH 75, FM 2821

**Utilities:** .....Electricity, Gas, Telephone, Wastewater, Water

**Surrounding Uses:** .....Agricultural, Residential, Commercial, Industrial

**Current Use:** .....State Prison Facilities/Agricultural

**Highest and Best Use:** .....State Prison Facilities/Agricultural

**Agency Projected Use:** .....State Prison Facilities/Agricultural

The Texas Department of Criminal Justice utilizes these sites as prison facilities and for agricultural production. They are located in the City of Huntsville along various roads. The sites are improved with 169 buildings, security fencing and lighting and concrete parking. The surrounding land uses include agricultural, commercial, industrial and residential development. Approximately a 25 acre portion is leased for commercial purposes.

**Recommendation:**

***Retain for continued agency operations.***

## Texas General Land Office

## Young Unit

**Location:**

5509 Attwater Road, Texas City, Galveston County,  
Texas

**Legal Description:**

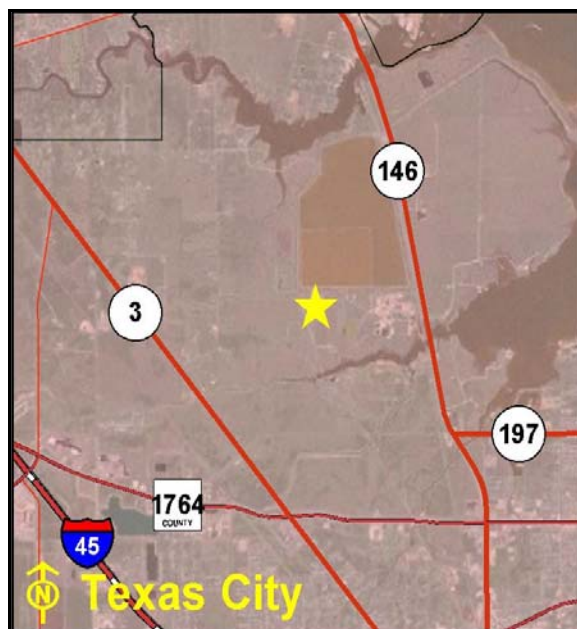
File No. 010-07-2821-2836, File No. 010-20-2480,  
Galveston County Official Records

**Encumbrances**

**Physical:** Floodplain

**Legal:** *Deed Restrictions:* Reversion Clause

*Easements:* Utility, Pipeline



Location Map

**Acres:** ..... 42.79

**Sen. Dist.:**.....11 **Rep. Dist.:**.....23 **FAR:**..... 0.07

**Bldgs.:** .....9 **Bldg Sq Ft** ..... 135,250 sq.ft.

**% in Floodplain:**..... 10% **Slope:**.....Level

**Zoning:** .....Unzoned

**Frontage:** .....Attwater Rd

**Utilities:** .....Electricity, Gas, Telephone, Wastewater, Water

**Surrounding Uses:** .....Governmental, Agricultural, Residential

**Current Use:** .....State Correctional Facility

**Highest and Best Use:** .....State Correctional Facility

**Agency Projected Use:** .....State Correctional Facility

The Texas Department of Criminal Justice utilizes this site as a correctional facility. It is located on Attwater Road in Texas City. The site is improved with nine buildings, perimeter fencing, concrete parking, and security lighting. The surrounding land uses include governmental, agricultural and residential development.

**Recommendation:**

***Retain for continued agency operations.***