

Texas General Land Office



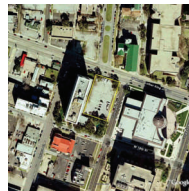
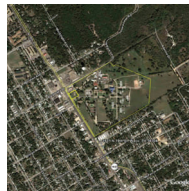
Jerry Patterson, Commissioner



STATE AGENCY PROPERTY

RECOMMENDED TRANSACTIONS

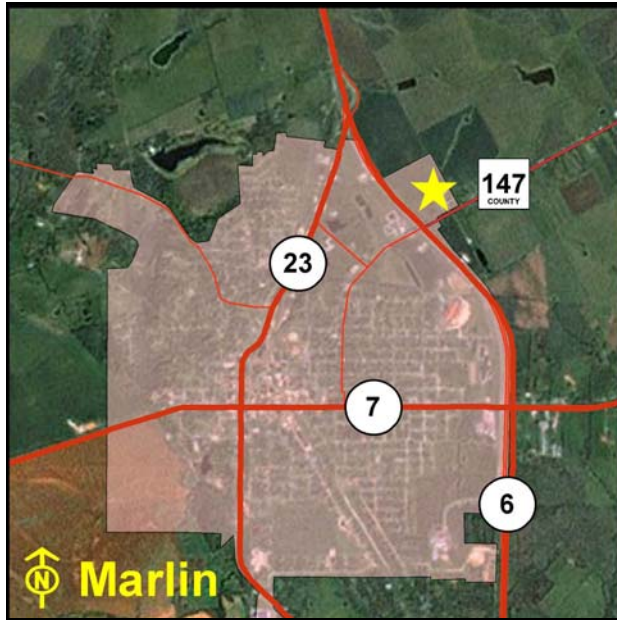
Report to the Governor
Supplemental Report
January 2011



**Marlin Robert E. Lee Group Home
Texas Health and Human Services Commission**

GLO Recommendation:

Dispose of this underutilized site.



Location Map



Aerial Photo

Total Acres: 0.25

GLO ID#: 2139

Acres Recommended: 0.25

Location:1606 Robert E. Lee Drive, Marlin, Falls County

Current Use:Group Home

Appraiser's Highest and Best Use:Group Home

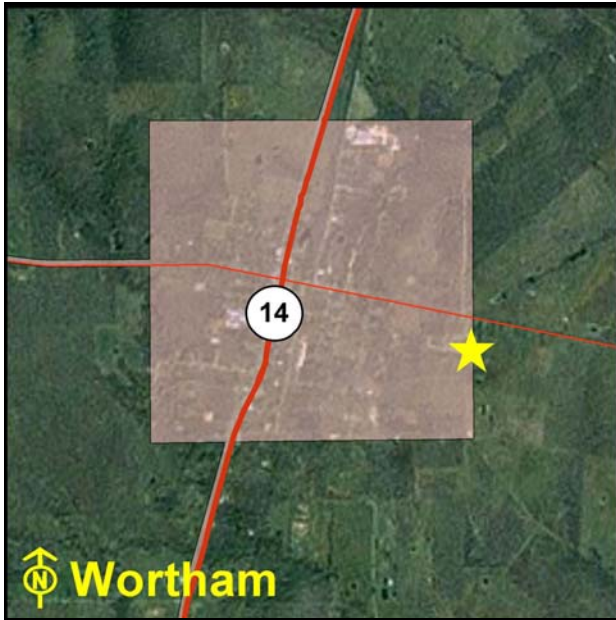
Health and Human Services owns this site and leases it to a non-profit agency as a group home that provides residential services. Located on Robert E. Lee Drive in Marlin, the site is improved with one building, perimeter fencing, and surface parking. The surrounding land uses include agricultural and residential development.

The appraisal indicates the highest and best use is to continue in the present use. However, the agency has indicated they no longer need this site and have targeted it for sale. GLO concurs with this decision.

**Wortham Twin Circle Group Home
Texas Health and Human Services Commission**

GLO Recommendation:

Dispose of this underutilized site.



Location Map



Aerial Photo

Total Acres: 0.34

GLO ID#: 2144

Acres Recommended: 0.34

Location:115 Twin Circle Drive, Wortham, Freestone County

Current Use:Group Home

Appraiser's Highest and Best Use:Residential Development

Health and Human Services owns this site and leases it to a non-profit agency as a group home that provides residential services. Located at the northeast corner of the intersection of Twin Circle Drive and Royal Lane in the eastern part of Wortham, the site is improved with a single-story building, two-car garage, privacy fencing, and a concrete driveway. The surrounding land uses include residential and medical development.

The appraisal indicates the highest and best use is to continue in the present use. However, the agency has indicated they no longer need this site and have targeted it for sale. GLO concurs with this decision.

Exhibit A

Unused or Underused State Property as Reported in Previous General Land Office Evaluation Reports January 2011

Agency Name	Site Name	GLO ID#	City	County	Total Acres	Unused Acres	Yr Gov Approved
Texas Department of Criminal Justice							
* Estelle Unit		702	Huntsville	Walker	5,458.73	895.99	1999
	1			Total:	5,458.73	895.99	
Texas Department of Transportation							
*Bull Creek Camp Hubbard Annex State Headquarters		747	Austin	Travis	29.50	29.50	2002
	1			Total:	29.50	29.50	
Texas Facilities Commission							
*Bull Creek State Cemetery		2402	Austin	Travis	46.19	46.19	2005
Parking Lot #19		1905	Austin	Travis	0.79	0.79	
Service Station		1913	Austin	Travis	0.23	0.23	
	3			Total:	47.21	47.21	

* Previously Approved for Sale or Lease by the Governor

Agency Name	Site Name	GLO ID#	City	County	Total Acres	Unused Acres	Yr Gov Approved
Texas Health and Human Services Commission							
* Abilene State Supported Living Center		752	Abilene	Taylor	364.33	32.14	2001
Marlin Robert E. Lee Group Home		2139	Marlin	Falls	0.25	0.25	
Rio Grande State Supported Living Center		736	Harlingen	Cameron	78.18	20.00	
San Angelo State Supported Living Center		767	Carlsbad	Tom Green	0.32	0.32	
Wortham Twin Circle Group Home		2144	Wortham	Freestone	0.34	0.34	
	5			<u>Total:</u>	443.42	43.05	
Texas Parks and Wildlife Department							
McKinney Falls Park/State Headquarters		72	Austin	Travis	715.47	13.00	
	1			<u>Total:</u>	715.47	13.00	
Texas Workforce Commission							
Brownsville Board Headquarters		1867	Brownsville	Cameron	0.41	0.41	
Brownsville Workforce Center		2077	Brownsville	Cameron	2.50	2.50	
Grand Prairie Tax and Appeals Office		1870	Grand Prairie	Dallas	1.26	1.26	
Harlingen Workforce Center		1866	Harlingen	Cameron	0.48	0.48	
Waxahachie Workforce Center		2074	Waxahachie	Ellis	1.42	1.42	
	5			<u>Total:</u>	6.07	6.07	
				<u>Grand Total:</u>	6,700.40	1,034.82	

* Previously Approved for Sale or Lease by the Governor