

---

Southeast Texas (SETX)  
and  
Southwest Louisiana (SWLA)  
Area Contingency Plan

Contacts: USCG Documentation POCs  
(DOCL ICS Form 207)

Annex 2a  
July 2021

---

**Southeast Texas and Southwest Louisiana Area Contingency Plan**

**Record of Changes**

<b>Change Number</b>	<b>Change Description</b>	<b>Section Number</b>	<b>Change Date</b>	<b>Name</b>
1	Appendix 28 to Annex 2a and removed Reference to Vol 2	All	30 July 2021	Todd Peterson, CGD 8
2				
3				
4				
5				
6				
7				
8				
9				
10				

**Table of Contents**

**1000 Type 1 Documentation Unit Leader Support by District..... 1**

**List of Figures**

**Figure 1 Type 1 Documentation Unit Leader (DOCL1) Support Organization Chart ..... 1**

## 1000 Type 1 Documentation Unit Leader Support by District

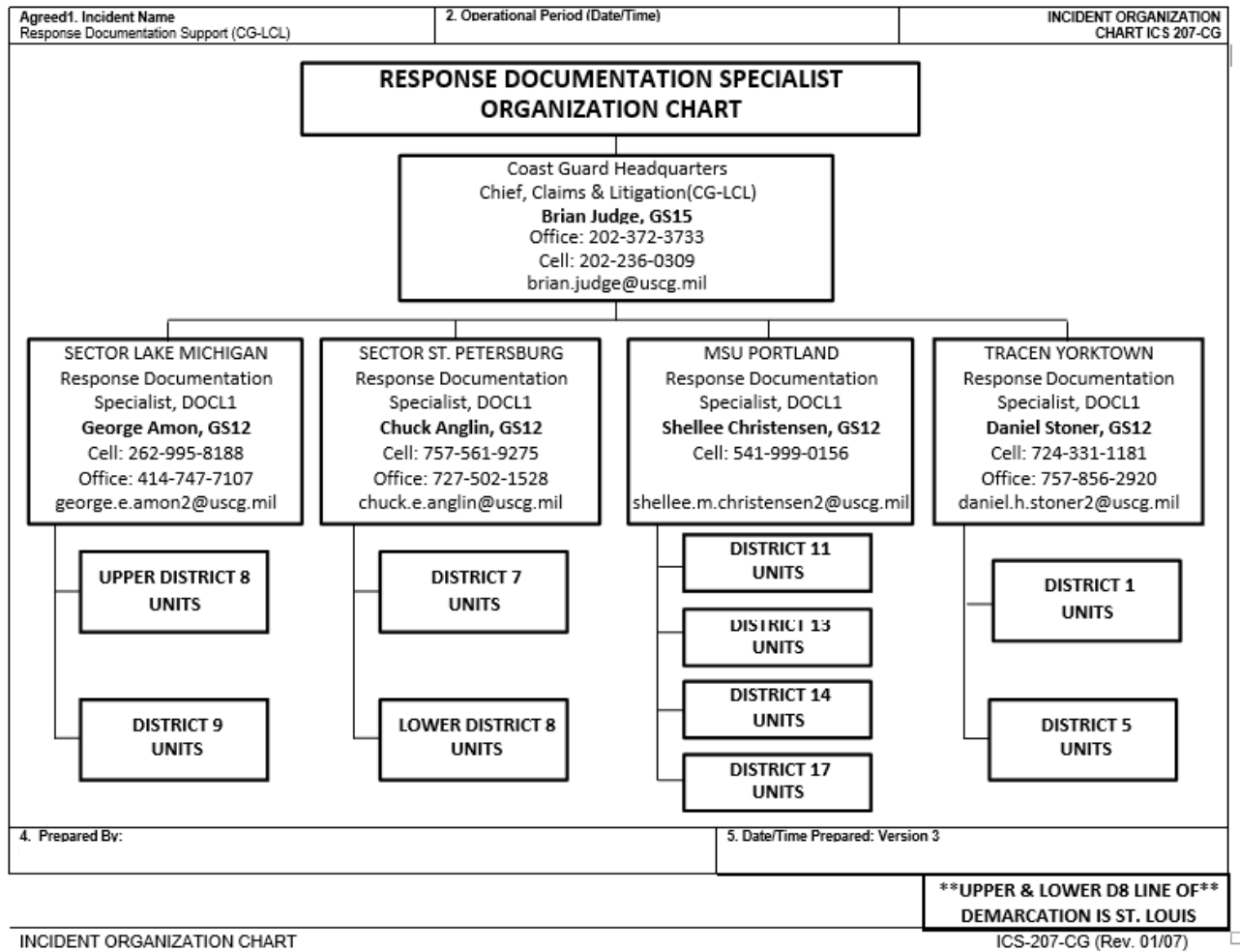


Figure 1 Type 1 Documentation Unit Leader (DOCL1) Support Organization Chart