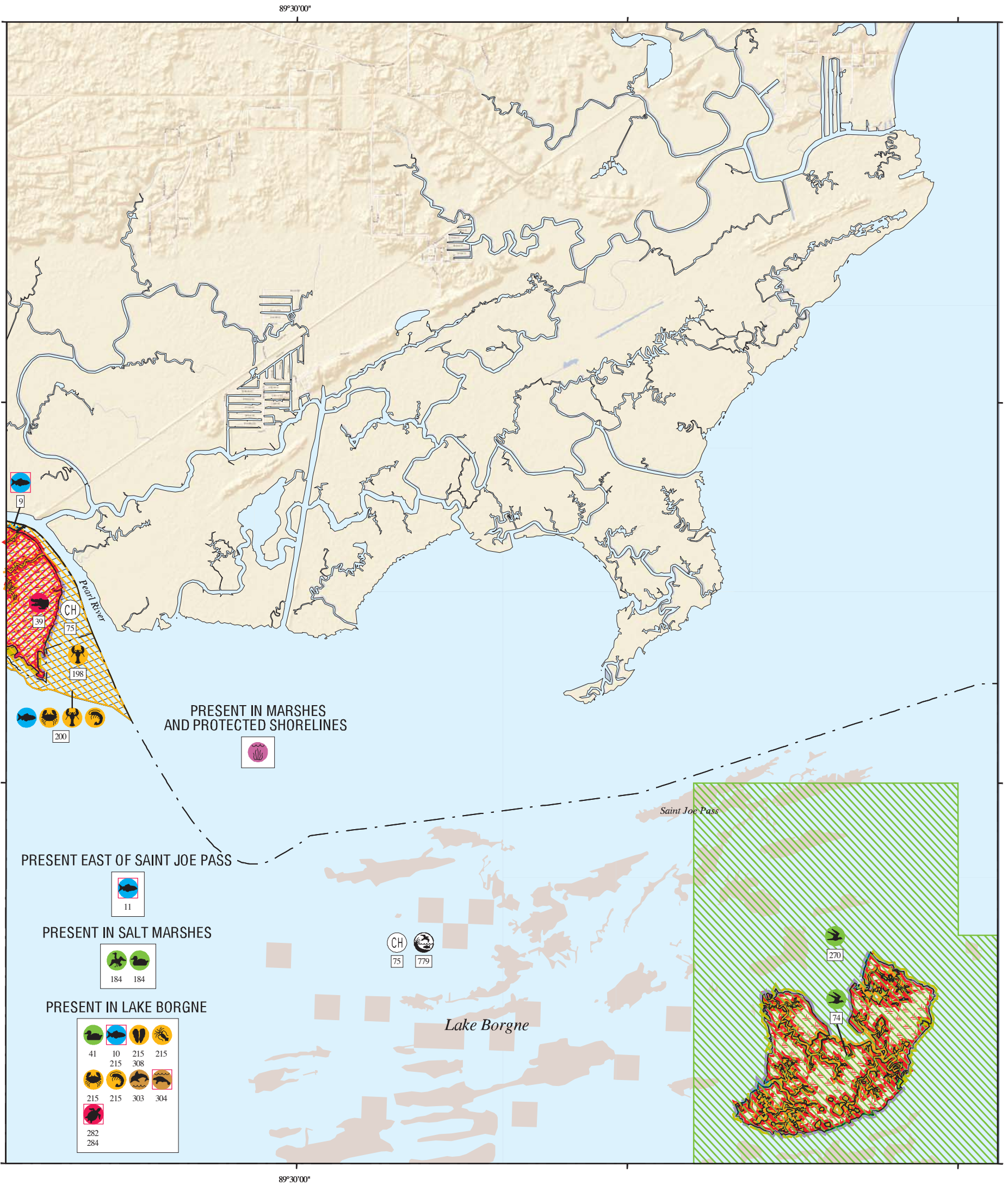


ENVIRONMENTAL SENSITIVITY INDEX MAP

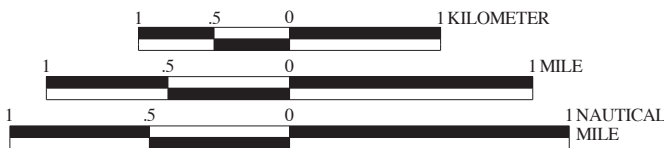


SHORELINE HABITATS (ESI)

- 1B EXPOSED, SOLID MAN-MADE STRUCTURES
- 2A EXPOSED WAVE-CUT PLATFORMS IN CLAY OR MUD
- 2B EXPOSED SCARPS AND STEEP SLOPES IN CLAY OR MUD
- 3A FINE- TO MEDIUM-GRAINED SAND BEACHES
- 3B SCARPS AND STEEP SLOPES IN SAND
- 4 COARSE-GRAINED SAND BEACHES
- 5 MIXED SAND AND GRAVEL (SHELL) BEACHES
- 6A GRAVEL BEACHES
- 6B RIPRAP
- 7 EXPOSED TIDAL FLATS
- 8A SHELTERED SCARPS IN CLAY OR MUD
- 8B SHELTERED, SOLID MAN-MADE STRUCTURES
- 8C SHELTERED RIPRAP
- 8E PEAT
- 9A SHELTERED TIDAL FLATS
- 9B VEGETATED LOW BANKS
- 10A SALT-AND BRACKISH-WATER MARSHES
- 10B FRESHWATER MARSHES
- 10C SWAMPS
- 10D SCRUB-SHRUB WETLANDS, INCLUDING BLACK MANGROVES

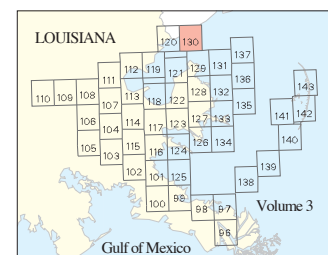


SCALE 1:50000



Not For Navigation
Published: December 2013

Published at Seattle, Washington
National Oceanic and Atmospheric Administration
National Ocean Service
Office of Response and Restoration
Emergency Response Division



Louisiana: ESIMAP 130 (cont.)

HUMAN USE RESOURCES:

CRITICAL HABITAT:

HUN#	Name	Contact	Phone
74	GULF STURGEON CRITICAL HABITAT	USFWS/NMFS	
75	GULF STURGEON CRITICAL HABITAT	USFWS/NMFS	

MANAGEMENT AREA:

HUN#	Name	Contact	Phone
779	PUBLIC OYSTER AREA	LDWF	