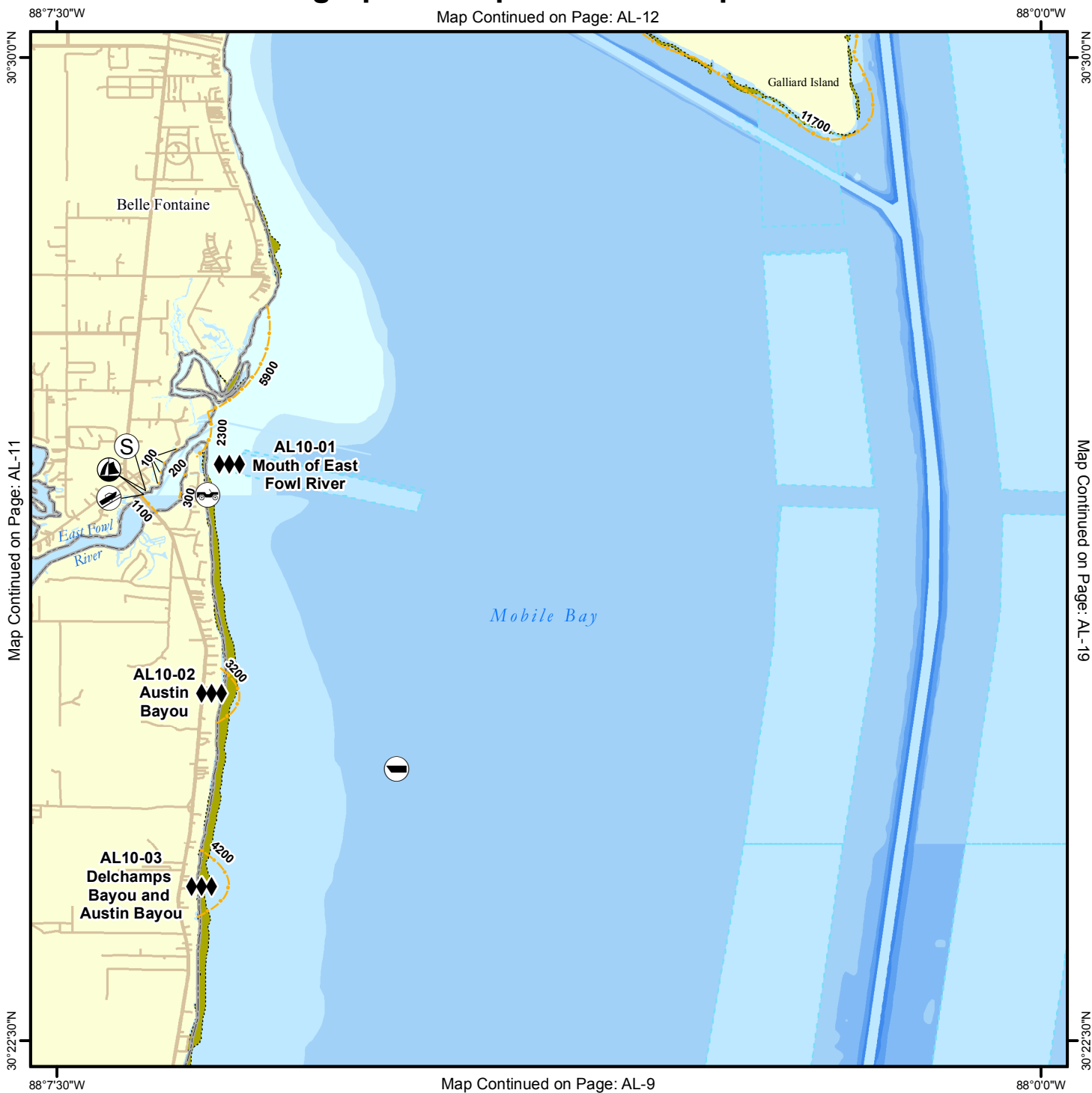


Geographic Response Plan Map: AL-10

Map Continued on Page: AL-12



Map Continued on Page: AL-11

Map Continued on Page: AL-19

Map Continued on Page: AL-9

<p>Environmentally Sensitive Areas</p> <p>Summer Protection Priority</p> <ul style="list-style-type: none"> ◆◆◆ A - Protect First ◆◆ B - Protect after A Areas ◆ C - Protect after B Areas <p>Response Methods</p> <ul style="list-style-type: none"> Y Skimmer ☉ Shallow Water Skimmer ▲ Collection Point ▲ Natural Collection Points — General Booming Strategy (Length in Feet) ▣ Incident Command Posts ⊙ Staging Areas ⊙ Oil Spill Risk Sites ⊙ Equipment Storage Locations ⊙ Beach or Water Access 	<p>Bio-Socioeconomic</p> <ul style="list-style-type: none"> ✈ Airport ⊙ Aquaculture ⊙ Aquatic Preserve/State Park ⊙ Artificial Reef/Hardbottom ⊙ Beach Mouse Habitat ⊙ Black Bear Habitat ⊙ Boat Ramp ⊙ Coast Guard ⊙ Diving ⊙ Flatwoods Salamander ⊙ Heliport ⊙ High Recreational Beach ⊙ Manatee 	<ul style="list-style-type: none"> ⊙ Marina ⊙ NERR ⊙ National Park ⊙ Naval Base ⊙ Panama City Crayfish ⚡ Power Plant ⊙ Reptile Habitat of Concern ⊙ Sea Turtle Nesting ⊙ Shore Bird Habitat ⊙ Spring ⊙ Sturgeon ⊙ Water Intake ⊙ Wildlife Refuge 	<ul style="list-style-type: none"> 🐢 Sea Turtle Nesting Beach 🏠 Federal Managed Areas 🏠 State Managed Areas 🐚 Aquaculture/Oysters 🗺 State Waters/County Line 🚢 USCG Sector Boundary
--	--	---	---

Sector Mobile Area Committee

Fish and Wildlife Research Institute

0 0.5 1 1.5 2 Miles

Name: Mouth of East Fowl River

Site ID:

AL10-01

Protection Priority (Season): Spring: Summer: Fall: Winter:

Site Description: Marsh, residential/commercial property, tidal creeks mouths

GEOSPATIAL INFORMATION

Latitude (DMS): 30° 27' 6.708" N

Longitude (DMS): 88° 6' 21.996" W

County: Mobile

Latitude (DD): 30.451863

Longitude (DD): -88.106110

SCAT Division: Mobile County Division 4

ESI Map: AL-10

ESI Name: Bellefontaine, Ala.

NOAA Chart: 11377_1

CHART Name: MOBILE BAY APPROACHES AND LOWER HALF

USGS Quad: 30088-D1

QUAD Name: Bellefontaine

Managed Area (if applicable):

General Location: East Fowl River

CONTACT INFORMATION

Contacts: ADCNR (24hr) 251-476-1256; AL State Warning Point 800-843-0699; USFWS Daphne Field Office 251-441-5181; NRC 800-424-8802; D-8 Duty NOAA SSC (24hr) 206-375-5697; DOI - Regional Environmental Officer 404-331-4524 or 404-852-5414

RESOURCES AT RISK INFORMATION

Shoreline Type: Salt and brackish water marshes, sandy beach, bulkhead, solid man made shorelines

Habitat: Salt and brackish water marsh - nursery and spawning habitat (fish & invertebrates), archaeological sites, sunken vessels, SAV

Wildlife: Bald eagle, Osprey, marine mammals

Threaten/Endangered Species: Alabama Red Bellied Turtle, Gulf sturgeon and Manatee (Throughout)

Socio-Economic Resources: Residential, recreation, recreational and commercial fishing

RESPONSE CONSIDERATIONS

Staging Area: Fowl river marina, Middle bay port

Collection Points: Floating assets, shallow skimmers

Area Access: Fowl River, Shallow draft vessel

Spill Risk: Vessel transportation, Fowl River Marina, fishing vessels

Response Resources: OSROs

PROTECTION STRATEGY INFORMATION

Tidal Range (FT): 3

Average Current (KTS): 0-2

Ease of Protection: Medium

Min. Boom Length (FT): 4,000

Boom Type: Hard

Booming Method: Deflection,
Protection/Exclusion

Protection Strategy: Exclusion boom (single) at mouth of East Fowl Rivers and exclusion boom at mouth of all tidal creeks in river and in bay.



Name: Austin Bayou

Site ID:

AL10-02

Protection Priority (Season): Spring: Summer: Fall: Winter:

Site Description: Private Property, Marsh & Beach - limited wave action

GEOSPATIAL INFORMATION

Latitude (DMS): 30° 25' 4.713" N

Longitude (DMS): 88° 6' 13.996" W

County: Mobile

Latitude (DD): 30.417976

Longitude (DD): -88.103888

SCAT Division: Mobile County Division 3

ESI Map: AL-10

ESI Name: Bellefontaine, Ala.

NOAA Chart 11377_1

CHART Name MOBILE BAY APPROACHES AND LOWER HALF

USGS Quad: 30088-D1

QUAD Name: Bellefontaine

Managed Area (if applicable):

General Location:

CONTACT INFORMATION

Contacts: ADCNR (24hr) 251-476-1256; AL State Warning Point 800-843-0699; USFWS Daphne Field Office 251-441-5181; NRC 800-424-8802; D-8 Duty NOAA SSC (24hr) 206-375-5697; DOI - Regional Environmental Officer 404-331-4524 or 404-852-5414

RESOURCES AT RISK INFORMATION

Shoreline Type: Shoal Grass, Salt and Brackish Water Marshes

Habitat: Shoal Grass, Salt and brackish water marshes - nursery and spawning habitat (fish + invertebrates), archaeological sites

Wildlife: Birds

Threaten/Endangered Species: Gulf Sturgeon, Manatee (throughout)

Socio-Economic Resources: OSRO

RESPONSE CONSIDERATIONS

Staging Area Fowl River Marina (334-973-2696), Alabama Port, Henderson Fishing Camp (334)865-3652

Collection Points: Fowl River

Area Access: Fowl River, Alabama Port, Shallow draft vessel

Spill Risk:

Response Resources:

PROTECTION STRATEGY INFORMATION

Tidal Range (FT): 2

Average Current (KTS):

Ease of Protection: Unknown

Min. Boom Length (FT): 3,050

Boom Type:

Booming Method: Containment, Deflection

Protection Strategy: If current allows, use exclusion boom across tributary entrance, angled diversion boom to natural collection areas, see pictured booming strategy



Name: Delchamps Bayou and Austin Bayou

Site ID:

AL10-03

Protection Priority (Season): Spring: Summer: Fall: Winter:

Site Description: Tidal Creeks, sandy beach, and marsh shoreline

GEOSPATIAL INFORMATION

Latitude (DMS): 30° 23' 40.715"

Longitude (DMS): 88° 6' 23.997" W

County: Mobile

Latitude (DD): 30.394643

Longitude (DD): -88.106666

SCAT Division: Mobile County Division 3

ESI Map: AL-10

ESI Name: Bellefontaine, Ala.

NOAA Chart: 11377_1

CHART Name: MOBILE BAY APPROACHES AND LOWER HALF

USGS Quad: 30088-D1

QUAD Name: Bellefontaine

Managed Area (if applicable):

General Location: Western side of Mobile Bay south of Fowl River

CONTACT INFORMATION

Contacts: ADCNR (24hr) 251-476-1256; AL State Warning Point 800-843-0699; USFWS Daphne Field Office 251-441-5181; NRC 800-424-8802; D-8 Duty NOAA SSC (24hr) 206-375-5697; DOI - Regional Environmental Officer 404-331-4524 or 404-852-5414

RESOURCES AT RISK INFORMATION

Shoreline Type: Salt and Brackish Water Marsh, sandy marsh

Habitat: Salt and brackish water marsh - nursery and spawning habitat (fish & invertebrates), tidal creeks

Wildlife: Birds, shorebirds, wading birds, sea turtles, marine mammals

Threaten/Endangered Species: Gulf Sturgeon and Manatee, Kemps Ridley

Socio-Economic Resources: Recreational and commercial fishing

RESPONSE CONSIDERATIONS

Staging Area: Fowl River Marina

Collection Points: Shallow Skimmers

Area Access: Alabama Port, Fowl River Marina, Shallow draft vessel

Spill Risk: Vessel transportation in Channel

Response Resources: OSRO

PROTECTION STRATEGY INFORMATION

Tidal Range (FT): 3

Average Current (KTS): 0-1

Ease of Protection: Medium

Min. Boom Length (FT): 1,500

Boom Type: Hard

Booming Method: Deflection, Protection/Exclusion

Protection Strategy: Use exclusion boom across tributary entrances.



Facility Name: Fowl River Marina

Site ID:

Data Collector (Agency): FWC-FWRI

Survey Type: Planning

Survey Date: 2008-01-16 00:00

Managing Agency:

General Manager/Contact Person:

Contact Phone #:

SCAT Description: Mobile County Division 4

Physical Address: 11799 Dauphin Island Parkway

City: Belle Fontaine

State: Alabama

Zip Code 36582

County: Mobile

GEOSPATIAL INFORMATION

Latitude (DMS): 30° 26' 41.754" N

Longitude (DMS): 88° 6' 50.490" W

Latitude (DD): 30.44493166

Longitude (DD): -88.11402499

SITE DESCRIPTION

Site Type: Staging Area; Boat Ramp; Marina

Access: Private

Operational Status:

Scale of Staging Area:

Hours of Operation: 24 hours

Days of Operation: 7 days a week

Water Type: Salt

Water Body Name: East Fowl River

Boat Launch Capability: Boats Under 25 ft

Number of Boat Ramps: 2

Number of Boat Ramp Lanes: 0

Number of Boat Slips: 0

Number of Moorings: 0

Boat Ramp Surface Composition:

Water Depth at End of Boat Ramp: 8 - 10 feet

Wave Energy at Site: Low

Shoreline Type in Viewable Viscinity: Seawall; Soft Stem Veg.

Access Constraints: No Access Constraints

Crane Capabilities: Not suitable for crane

Collection Point Capabilities:

Parking Capacity for Trailers: 30

Parking Capacity for Cars: 40

Parking Lot Dimensions:

Parking Surface: Paved - Concrete or Asphalt

Capable for Light or Heavy Equipment and Type:

Boom Available On-Site and Length:

ADDITIONAL AMMENITIES

Fuels Available: Gasoline; Diesel

Propane or Natural Gas Available

Water Available: Yes

Fire Hydrant: Yes

Pumpout Available: Pumpout Available

Bathrooms Available: Restroom Facilities

Electricity Amperage Available: 30 Amp Hookup

Camping Facilities:

Food Available: On-Site Restaurant; Food Available (1-5 mi.)

Security Available and Hours On Duty:

GENERAL INFORMATION AND COMMENTS

Special/Pre-Planned Events and Dates:

Comments:

Photo URL:

