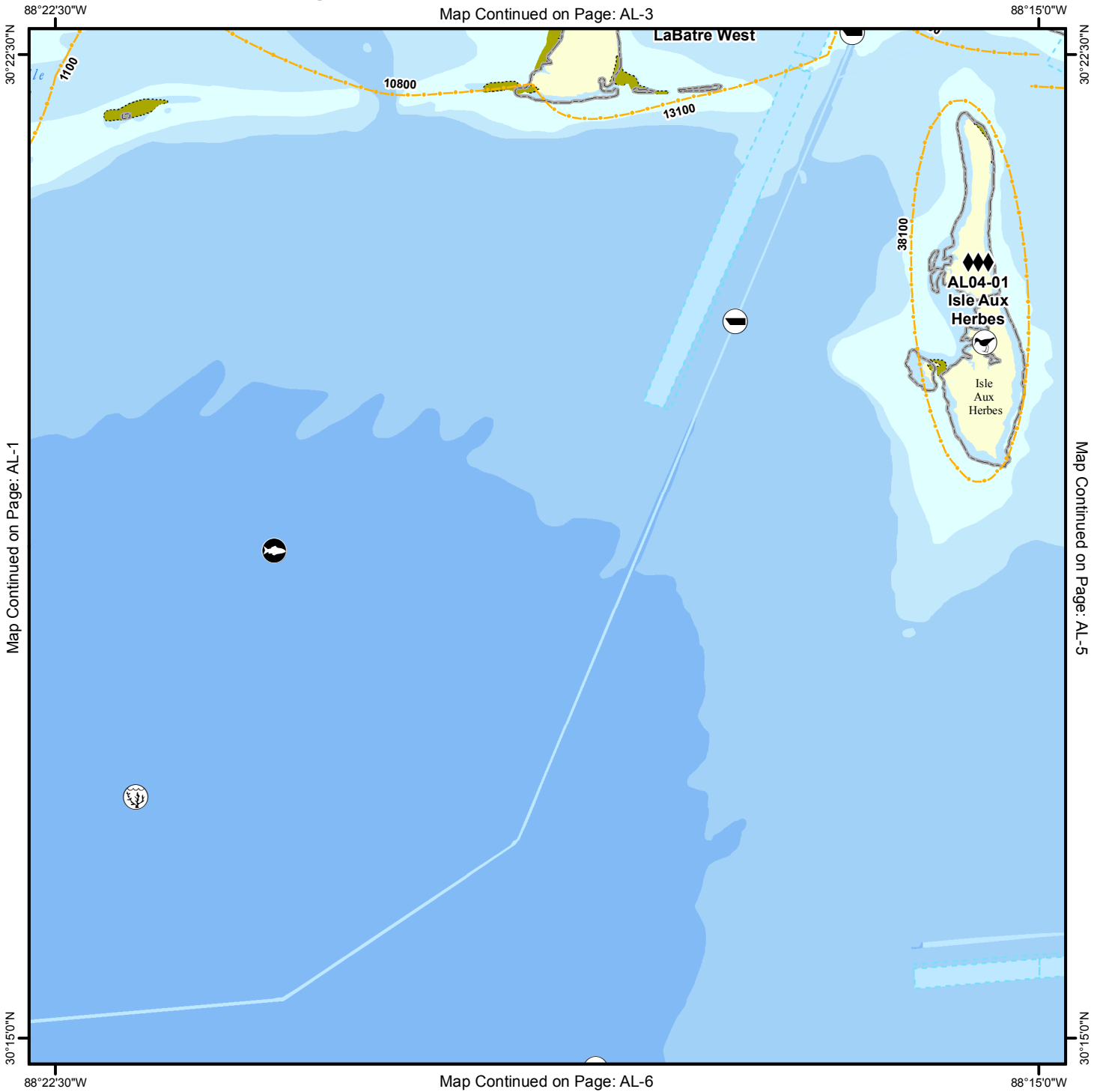


Geographic Response Plan Map: AL-4

Map Continued on Page: AL-3




Map Continued on Page: AL-1


Map Continued on Page: AL-5


Map Continued on Page: AL-6

<p>Environmentally Sensitive Areas</p> <p>Summer Protection Priority</p> <ul style="list-style-type: none"> ◆◆◆ A - Protect First ◆◆ B - Protect after A Areas ◆ C - Protect after B Areas <p>Response Methods</p> <ul style="list-style-type: none"> Y Skimmer ☉ Shallow Water Skimmer ▲ Collection Point ▲ Natural Collection Points General Booming Strategy (Length in Feet) ▣ Incident Command Posts Ⓢ Staging Areas Ⓡ Oil Spill Risk Sites ⓔ Equipment Storage Locations Ⓜ Beach or Water Access 	<p>Bio-Socioeconomic</p> <ul style="list-style-type: none"> ✈ Airport Ⓜ Aquaculture Ⓜ Aquatic Preserve/State Park Ⓜ Artificial Reef/Hardbottom Ⓜ Beach Mouse Habitat Ⓜ Black Bear Habitat Ⓜ Boat Ramp Ⓜ Coast Guard Ⓜ Diving Ⓜ Flatwoods Salamander Ⓜ Heliport Ⓜ High Recreational Beach Ⓜ Manatee 	<ul style="list-style-type: none"> Ⓜ Marina Ⓜ NERR Ⓜ National Park Ⓜ Naval Base Ⓜ Panama City Crayfish ⚡ Power Plant Ⓜ Reptile Habitat of Concern Ⓜ Sea Turtle Nesting Ⓜ Shore Bird Habitat Ⓜ Spring Ⓜ Sturgeon Ⓜ Water Intake Ⓜ Wildlife Refuge 	<ul style="list-style-type: none"> 🌿 Sea Turtle Nesting Beach 📏 Federal Managed Areas 📏 State Managed Areas 📏 Aquaculture/Oysters 📏 State Waters/County Line 📏 USCG Sector Boundary
--	--	---	---




Sector Mobile
Area Committee

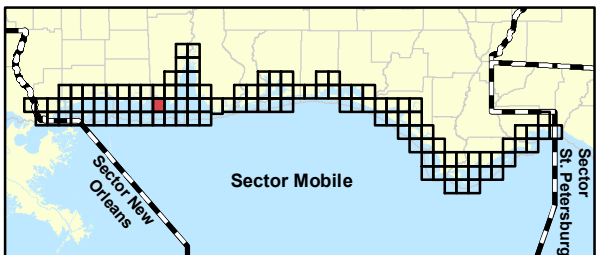




Fish and Wildlife
Research Institute



0 0.5 1 1.5 2 Miles



Name: Isle Aux Herbes

Site ID:

AL04-01

Protection Priority (Season): Spring: A Summer: A Fall: A Winter: A

Site Description: Also known as Coffee Island. Salt marsh and seagrass throughout

GEOSPATIAL INFORMATION

Latitude (DMS): 30° 20' 55.045"

Longitude (DMS): 88° 15' 27.649"

County: Mobile

Latitude (DD): 30.348624

Longitude (DD): -88.257680

SCAT Division: Mobile County Division 2

ESI Map: AL-4

ESI Name: Isle Aux Herbes, Ala.

NOAA Chart: 11376_1

CHART Name: MOBILE BAY ALABAMA

USGS Quad: 30088-C3

QUAD Name: Isle Aux Herbes

Managed Area (if applicable): ADCNR

General Location: Coffee Island

CONTACT INFORMATION

Contacts: ADCNR (24hr) 251-476-1256; AL State Warning Point 800-843-0699; USFWS Daphne Field Office 251-441-5181; NRC 800-424-8802; D-8 Duty NOAA SSC (24hr) 206-375-5697; DOI - Regional Environmental Officer 404-331-4524 or 404-852-5414

RESOURCES AT RISK INFORMATION

Shoreline Type: Saltwater marsh

Habitat: Salt Marsh, spawning areas for many fish and invertebrates, SAV, oysters

Wildlife: Birds, Shellfish, Fish, Gulf Sturgeon (T), Piping Plover, waterfowl, turtles, wading birds, marine mammals

Threaten/Endangered Species: Gulf Sturgeon, Manatee, Piping Plover, MS Diamondback Terrapin, Saltmarsh snake

Socio-Economic Resources: Recreational and commercial fishing

RESPONSE CONSIDERATIONS

Staging Area: Bayou LaBatre Boat Ramp

Collection Points: Floating Assetts (shallow skimmers)

Area Access: Shallow draft vessel

Spill Risk: Shipping lanes, pipelines, Chevron Refinery

Response Resources: OSRO

PROTECTION STRATEGY INFORMATION

Tidal Range (FT): 3

Average Current (KTS): <1

Ease of Protection: Medium

Min. Boom Length (FT): 35,000

Boom Type: Hard

Booming Method: Deflection, Protection/Exclusion

Protection Strategy: Encircle island with 35,000 of protection boom, collect oil on water with mobile shallow skimmer.

