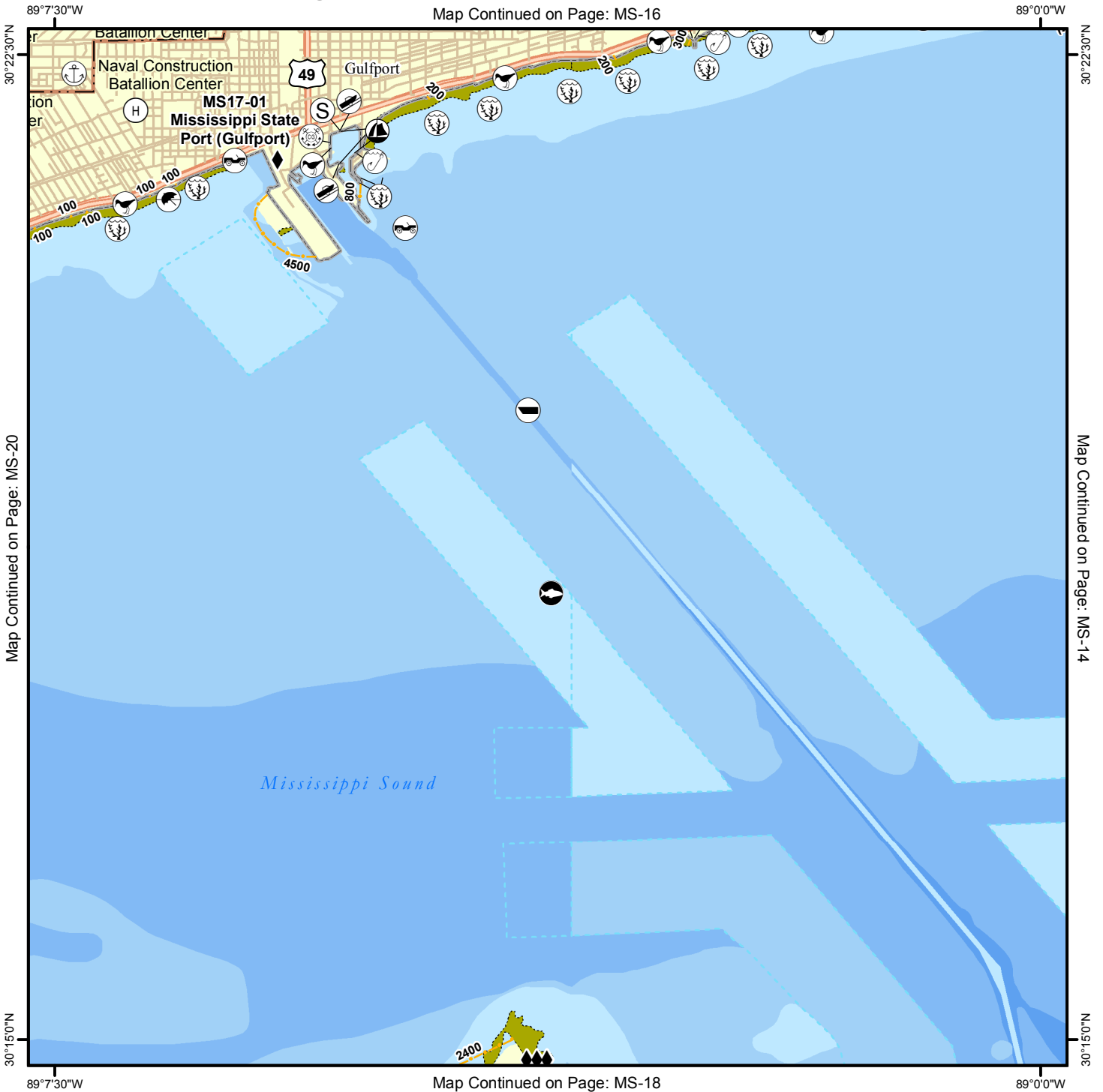


# Geographic Response Plan Map: MS-17

Map Continued on Page: MS-16



Map Continued on Page: MS-20

Map Continued on Page: MS-14

Map Continued on Page: MS-18

<p><b>Environmentally Sensitive Areas</b></p> <p><b>Summer Protection Priority</b></p> <ul style="list-style-type: none"> <li>◆◆ A - Protect First</li> <li>◆◆ B - Protect after A Areas</li> <li>◆ C - Protect after B Areas</li> </ul> <p><b>Response Methods</b></p> <ul style="list-style-type: none"> <li>Y Skimmer</li> <li>☉ Shallow Water Skimmer</li> <li>▲ Collection Point</li> <li>▲ Natural Collection Points</li> <li>— General Booming Strategy (Length in Feet)</li> <li>▣ Incident Command Posts</li> <li>Ⓢ Staging Areas</li> <li>Ⓡ Oil Spill Risk Sites</li> <li>ⓔ Equipment Storage Locations</li> <li>Ⓜ Beach or Water Access</li> </ul>	<p><b>Bio-Socioeconomic</b></p> <ul style="list-style-type: none"> <li>✈ Airport</li> <li>Ⓜ Aquaculture</li> <li>Ⓜ Aquatic Preserve/State Park</li> <li>Ⓜ Artificial Reef/Hardbottom</li> <li>Ⓜ Beach Mouse Habitat</li> <li>Ⓜ Black Bear Habitat</li> <li>Ⓜ Boat Ramp</li> <li>Ⓜ Coast Guard</li> <li>Ⓜ Diving</li> <li>Ⓜ Flatwoods Salamander</li> <li>Ⓜ Heliport</li> <li>Ⓜ High Recreational Beach</li> <li>Ⓜ Manatee</li> </ul>	<ul style="list-style-type: none"> <li>Ⓜ Marina</li> <li>Ⓜ NERR</li> <li>Ⓜ National Park</li> <li>Ⓜ Naval Base</li> <li>Ⓜ Panama City Crayfish</li> <li>⚡ Power Plant</li> <li>Ⓜ Reptile Habitat of Concern</li> <li>Ⓜ Sea Turtle Nesting</li> <li>Ⓜ Shore Bird Habitat</li> <li>Ⓜ Spring</li> <li>Ⓜ Sturgeon</li> <li>Ⓜ Water Intake</li> <li>Ⓜ Wildlife Refuge</li> </ul>	<ul style="list-style-type: none"> <li>🌿 Sea Turtle Nesting Beach</li> <li>📏 Federal Managed Areas</li> <li>📏 State Managed Areas</li> <li>📏 Aquaculture/Oysters</li> <li>📏 State Waters/County Line</li> <li>📏 USCG Sector Boundary</li> </ul>
---	--	---	---

Sector Mobile Area Committee

Fish and Wildlife Research Institute

0 0.5 1 1.5 2 Miles

Sector New Orleans      Sector Mobile      Sector St. Petersburg

**Name:** Mississippi State Port (Gulfport)

**Site ID:**

**MS17-01**

**Protection Priority (Season):** Spring:  Summer:  Fall:  Winter:

**Site Description:** Vessel terminal, USCG base (Gulfport), ferry terminal, private marina

**GEOSPATIAL INFORMATION**

**Latitude (DMS):** 30° 21' 40.712"

**Longitude (DMS):** 89° 5' 35.136" W

**County:** Harrison

**Latitude (DD):** 30.361309

**Longitude (DD):** -89.093093

**SCAT Division:** Harrison County Division 3

**ESI Map:** MS-17

**ESI Name:** Gulfport South, MS

**NOAA Chart:** 11373\_1

**CHART Name:** MISSISSIPPI SND & APPROACHES DAUPHIN ISL TO CAT ISL

**USGS Quad:** 30089-C1

**QUAD Name:** Gulfport South

**Managed Area (if applicable):**

**General Location:**

**CONTACT INFORMATION**

**Contacts:** Harrison County EOC 228-865-4002 or 228-323-6420 (Director); Mississippi State EOC 601-933-6875; MS DMR (24hr) 228-374-5000; MS State Port Authority at Gulfport 228-865-4300; City of Gulfport (Parks) 228-868-5881 or (Harbor Master) 228-867-8721; NRC 800-424-8802; D-8 Duty NOAA SSC (24hr) 206-375-5697; DOI - Regional Environmental Officer 404-331-4524 or 404-852-5414

**RESOURCES AT RISK INFORMATION**

**Shoreline Type:** Sand beach, exposed solid man made structure, rip-rap

**Habitat:** Beach (Recreation area adjacent), encrusting organisms, rip-rap

**Wildlife:** Wading, Shore, Diving birds, Gulls, and Terns, Shrimp, Crab, Fish, possible Gulf Sturgeon (T)

**Threaten/Endangered Species:** Gulf sturgeon,

**Socio-Economic Resources:** High value port facility, ferry to Gulf Islands, fishing boating

**RESPONSE CONSIDERATIONS**

**Staging Area:** Gulfport Port and Boat Ramp, Biloxi small craft harbor, Long beach Yacht club

**Collection Points:** On adjacent beaches, on-water skimming

**Area Access:** Vehicle, boat

**Spill Risk:** Gulfport Port, Gulfport marinas, vessel traffic

**Response Resources:** USCG Gulfport

**PROTECTION STRATEGY INFORMATION**

**Tidal Range (FT):** 2

**Average Current (KTS):**

**Ease of Protection:** Medium

**Min. Boom Length (FT):**

**Boom Type:** Hard

**Booming Method:** Deflection, Protection/Exclusion

**Protection Strategy:** Place protection/exclusion boom across mouth of the MS Port and adjacent harbor to east. Also place protection boom around post-construction project west of the MS Port. Boom will have to be maintained at all times due to vessel traffic.



Facility Name: Gulfport Boatramp

Site ID:

Data Collector (Agency): State of Mississippi

Survey Type: Response

Survey Date: 2008-01-30 00:00

Managing Agency: City of Gulfport

General Manager/Contact Person:

Contact Phone #:

SCAT Description: Harrison County Division 3

Physical Address: Jones Park Drive

City: Gulfport

State: Mississippi

Zip Code 39501

County: Harrison

## GEOSPATIAL INFORMATION

Latitude (DMS): 30° 21' 55.104" N

Longitude (DMS): 89° 5' 19.542" W

Latitude (DD): 30.36530666

Longitude (DD): -89.08876166

## SITE DESCRIPTION

Site Type: Staging Area; Boat Ramp

Access: Public

Operational Status:

Scale of Staging Area:

Hours of Operation: 24 hours

Days of Operation: 7 days a week

Water Type: Salt

Water Body Name: Mississippi Sound

Boat Launch Capability: RAMP - Boats OVER 25 FT

Number of Boat Ramps: 4

Number of Boat Ramp Lanes: 4

Number of Boat Slips: 0

Number of Moorings: 0

Boat Ramp Surface Composition: Cement or Asphalt

Water Depth at End of Boat Ramp: 4 - 6 feet

Wave Energy at Site: Low

Shoreline Type in Viewable Vicinity: Rip-Rap

Access Constraints: No Access Constraints

Crane Capabilities: Suitable for small crane; Suitable for large crane

Collection Point Capabilities:

Parking Capacity for Trailers: 250

Parking Capacity for Cars: 500

Parking Lot Dimensions:

Parking Surface: Paved - Concrete or Asphalt; Dirt/Gravel; Grass

Capable for Light or Heavy Equipment and Type:

Boom Available On-Site and Length:

## ADDITIONAL AMMENITIES

Fuels Available: No Fuel

Propane or Natural Gas Available

Water Available: No

Fire Hydrant: Yes

Pumpout Available: No Pumpout

Bathrooms Available: Restroom Facilities

Electricity Amperage Available: No Electricity Available

Camping Facilities:

Food Available: Food Available (1-5 mi.)

Security Available and Hours On Duty:

## GENERAL INFORMATION AND COMMENTS

Special/Pre-Planned Events and Dates:

Comments:

Photo URL:

