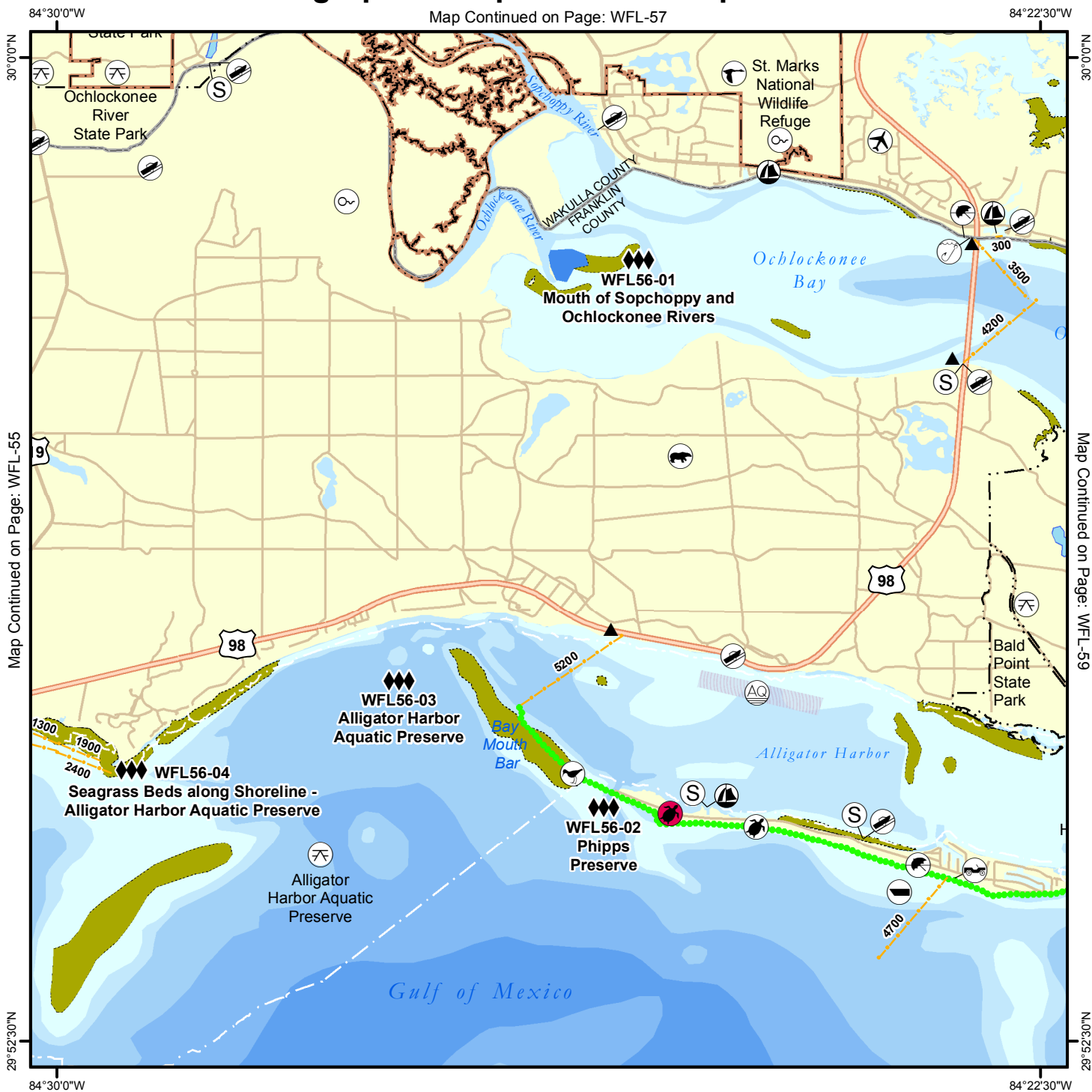


Geographic Response Plan Map: WFL-56

Map Continued on Page: WFL-57



Map Continued on Page: WFL-55

Map Continued on Page: WFL-59

<p>Environmentally Sensitive Areas</p> <p>Summer Protection Priority</p> <ul style="list-style-type: none"> ◆◆◆ A - Protect First ◆◆ B - Protect after A Areas ◆ C - Protect after B Areas <p>Response Methods</p> <ul style="list-style-type: none"> Y Skimmer ☉ Shallow Water Skimmer ▲ Collection Point ▲ Natural Collection Points — General Booming Strategy (Length in Feet) ▣ Incident Command Posts Ⓢ Staging Areas Ⓡ Oil Spill Risk Sites ⓔ Equipment Storage Locations ☉ Beach or Water Access 	<p>Bio-Socioeconomic</p> <ul style="list-style-type: none"> ✈ Airport ⓐ Aquaculture ⓐ Aquatic Preserve/State Park ⓐ Artificial Reef/Hardbottom 🐭 Beach Mouse Habitat 🐻 Black Bear Habitat 🚤 Boat Ramp ⓐ Coast Guard 🤿 Diving 🐸 Flatwoods Salamander Ⓜ Heliport 🏖 High Recreational Beach 🐬 Manatee 	<ul style="list-style-type: none"> ⚓ Marina Ⓝ NERR 🌳 National Park ⚓ Naval Base 🐠 Panama City Crayfish ⚡ Power Plant 🦎 Reptile Habitat of Concern 🐢 Sea Turtle Nesting 🐦 Shore Bird Habitat Ⓢ Spring 🐟 Sturgeon 💧 Water Intake 🦉 Wildlife Refuge 	<ul style="list-style-type: none"> 🌿 Sea Turtle Nesting Beach 🏠 Federal Managed Areas 🏠 State Managed Areas 🐚 Aquaculture/Oysters 📏 State Waters/County Line 🚤 USCG Sector Boundary
--	--	---	---

Sector Mobile Area Committee

N
S
E
W

Fish and Wildlife Research Institute

0 0.5 1 1.5 2 Miles

Name: Mouth of Sopchoppy and Ochlockonee Rivers

Site ID:

WFL56-01

Protection Priority (Season): Spring: Summer: Fall: Winter:

Site Description:

GEOSPATIAL INFORMATION

Latitude (DMS): 29° 58' 27.410"

Longitude (DMS): 84° 25' 33.861"

County: Franklin

Latitude (DD): 29.974280

Longitude (DD): -84.426073

SCAT Division: Franklin County Division 4

ESI Map: WFL-56

ESI Name: Saint Teresa Beach, Fla.

NOAA Chart 11405_1

CHART Name APALACHEE BAY

USGS Quad: 29084-H4

QUAD Name: Saint Teresa Beach

Managed Area (if applicable):

General Location:

CONTACT INFORMATION

Contacts: Wakulla DEM (Director) 850-745-7200; FWC Law Enforcement 850-697-2298 or 850-251-7247 (cell) or (Carrabelle) 850-488-4676; FWC Wildlife Alert Hotline 1-888-404-3922; USFWS St.Marks NWR 850-925-6121; Ochlockonee/Bald Pt. State Park (Mgr) 850-462-2771; NRC 800-424-8802; FL State Watch Office 800-320-0519; FWC Non-Game Biologist 850-265-3676; DEP-OER 850-245-2873; D-8 Duty NOAA SSC (24hr) 206-375-5697; DOI - Regional Environmental Officer 404-331-4524 or 404-852-5414

RESOURCES AT RISK INFORMATION

Shoreline Type: Salt Marsh**Habitat:** Seagrass, salt marsh**Wildlife:** Blue & Stne Crab, Pnk, Wht, & Brwn Shrimp, Oysters, Clams, Scallops, Seagrass, Bald Eagle(T), Egrets, Herons, Terns(T), Plovers(T), Oystercatchers, FL Blk Bear (T), Sea Turtles, Sting Rays, Manatees, Shrimp**Threaten/Endangered Species:** Terns(T), Plovers(T), Kemp's Ridley(E), Green(E), Loggerhead(T), Leatherback(E), Gulf Sturgeon**Socio-Economic Resources:** Commercial and recreational fishing

RESPONSE CONSIDERATIONS

Staging Area Mashas Sands, Ochlocknee Bay Landing (@ HWY98 Bridge)**Collection Points:** Ochlockonee Bay Bridge**Area Access:** Boat**Spill Risk:** Commercial and recreational vessels**Response Resources:**

PROTECTION STRATEGY INFORMATION

Tidal Range (FT):**Average Current (KTS):****Ease of Protection:** Medium**Min. Boom Length (FT):****Boom Type:****Booming Method:** Deflection**Protection Strategy:** Deflection boom placed on both sides of river with gap for vessel traffic to pass. Channel in river is not centered. See NOAA Chart for channel.

Name: Phipps Preserve

Site ID:

WFL56-02

Protection Priority (Season): Spring: Summer: Fall: Winter:

Site Description: Nature Conservancy owned, Critical Wildlife Areas

GEOSPATIAL INFORMATION

Latitude (DMS): 29° 54' 28.091"

Longitude (DMS): 84° 25' 54.184"

County: Franklin

Latitude (DD): 29.907803

Longitude (DD): -84.431718

SCAT Division: Franklin County Division 4

ESI Map: WFL-56

ESI Name: Saint Teresa Beach, Fla.

NOAA Chart: 11405_1

CHART Name: APALACHEE BAY

USGS Quad: 29084-H4

QUAD Name: Saint Teresa Beach

Managed Area (if applicable): TNC

General Location: Apalachicola Division of Sector, Tip (western) of Alligator Point

CONTACT INFORMATION

Contacts: Franklin County EOC 850-653-8977; FWC Law Enforcement 850-697-2298 or 850-251-7247 (cell); Nature Conservancy (Bristol Office) 850-643-2756 or 850-643-5049; NRC 800-424-8802; FL State Watch Office 800-320-0519; FWC Non-Game Biologist 850-265-3676; DEP-OER 850-245-2873; D-8 Duty NOAA SSC (24hr) 206-375-5697; DOI - Regional Environmental Officer 404-331-4524 or 404-852-5414

RESOURCES AT RISK INFORMATION

Shoreline Type: Sand Beach, Sand Dunes**Habitat:** Pine flatwoods, seagrass, Piping Plover habitat**Wildlife:** Blue & Stne Crab, Pnk, Wht, & Brwn Shrimp, Oysters, Clams, Scallops, Seagrass, Bald Eagle, Egrets, Herons, Terns(T), Plovers(T), Oystercatchers, FL Blk Bear (T), Sea Turtles**Threaten/Endangered Species:** Terns(T), Plovers(T), Kemp's Ridley(E), Green(E), Loggerhead(T), Leatherback(E), Gulf Sturgeon**Socio-Economic Resources:**

RESPONSE CONSIDERATIONS

Staging Area: Alligator Point Yacht Basin Marina, Alligator Point Boat Ramp**Collection Points:** Deflect to Alligator point beach access**Area Access:** Boat only**Spill Risk:** Alligator Point Yacht Basin Marina**Response Resources:** Alligator point volunteer fire department

PROTECTION STRATEGY INFORMATION

Tidal Range (FT): 2-3**Average Current (KTS):****Ease of Protection:** Unknown**Min. Boom Length (FT):****Boom Type:** Hard**Booming Method:** Protection/Exclusion**Protection Strategy:** Gated and locked, no public access. Use limited personnel to minimize disturbance to nesting and migratory birds. No mechanical operations advised.

Name: Alligator Harbor Aquatic Preserve

Site ID:

WFL56-03

Protection Priority (Season): Spring: Summer: Fall: Winter:

Site Description: Includes Alligator Harbor area, Alligator Harbor Aquatic Preserve, shoreline along US319/US98/SR30, and clam aquaculture areas

GEOSPATIAL INFORMATION

Latitude (DMS): 29° 55' 0.747" N

Longitude (DMS): 84° 27' 29.639"

County: Franklin

Latitude (DD): 29.916874

Longitude (DD): -84.458233

SCAT Division: Franklin County Division 4

ESI Map: WFL-56

ESI Name: Saint Teresa Beach, Fla.

NOAA Chart: 11405_1

CHART Name: APALACHEE BAY

USGS Quad: 29084-H4

QUAD Name: Saint Teresa Beach

Managed Area (if applicable): Alligator Harbor Aquatic Preserve

General Location: Apalachicola Division of Sector

CONTACT INFORMATION

Contacts: Franklin County EOC 850-653-8977; FWC Law Enforcement 850-697-2298 or 850-251-7247 (cell); Apalachicola NERR (Director) 850-670-7700; FDACS-Division of Aquaculture (Director) 850-488-5471; FSU Marine Lab 850-697-4095; FL State Watch Office 800-320-0519; FWC Non-Game Biologist 850-265-3676; DEP-OER 850-245-2873; D-8 Duty NOAA SSC (24hr) 206-375-5697; DOI - Regional Environmental Officer 404-331-4524 or 404-852-5414

RESOURCES AT RISK INFORMATION

Shoreline Type: Sand beach, salt marsh

Habitat: Seagrass beds, salt marsh, clam beds, oyster beds, tidal flats, algal beds

Wildlife: Blue & Stne Crab, Pnk, Wht, & Brwn Shrimp, Oysters, Clams, Scallops, Bald Eagle, Egrets, Herons, Terns(T), Plovers(T), Oystercatchers, FL Blk Bear (T), Sea Turtles, Dolphins,

Threaten/Endangered Species: Terns(T), Plovers(T), FL Blk Bear(T), Sea Turtles (Kemp's Ridley, Green, Loggerhead, Leatherback), Gulf Sturgeon,

Socio-Economic Resources: Clam aquaculture

RESPONSE CONSIDERATIONS

Staging Area: Florida State Marine Lab Boat Ramp, Alligator Point Boat Ramp, Alligator Point Yacht Basin Marina

Collection Points: US98 (see map)

Area Access: Boat, vehicle

Spill Risk: Alligator Point Yacht Basin Marina

Response Resources: Alligator Point Volunteer Fire Department

PROTECTION STRATEGY INFORMATION

Tidal Range (FT): 3

Average Current (KTS):

Ease of Protection: Easy

Min. Boom Length (FT): 5,000

Boom Type: Hard

Booming Method: Protection/Exclusion

Protection Strategy: Place exclusion boom across mouth of Alligator Harbor Channel from tip of Phipps Preserve Bar to St Teresa Beach. Place additional protection boom along exposed marshes at mouth of channel.



Name: Seagrass Beds along Shoreline - Alligator Harbor Aquatic Preserve

Site ID:

WFL56-04

Protection Priority (Season): Spring: Summer: Fall: Winter:

Site Description: Aquatic Preserve - Alligator Harbor - Int 319 and 98, clam aquaculture

GEOSPATIAL INFORMATION

Latitude (DMS): 29° 54' 34.746"

Longitude (DMS): 84° 29' 33.643"

County: Franklin

Latitude (DD): 29.909652

Longitude (DD): -84.492678

SCAT Division: Franklin County Division 4

ESI Map: WFL-56

ESI Name: Saint Teresa Beach, Fla.

NOAA Chart: 11405_1

CHART Name: APALACHEE BAY

USGS Quad: 29084-H4

QUAD Name: Saint Teresa Beach

Managed Area (if applicable): Alligator Harbor Aquatic Preserve

General Location: Apalachicola Division of Sector

CONTACT INFORMATION

Contacts: Franklin County EOC 850-653-8977; FWC Law Enforcement 850-697-2298 or 850-251-7247 (cell); FSU Marine Lab 850-697-4095; Apalachicola NERR (Director) 850-670-7700; FL State Watch Office 800-320-0519; FWC Non-Game Biologist 850-265-3676; DEP-OER 850-245-2873; D-8 Duty NOAA SSC (24hr) 206-375-5697; DOI - Regional Environmental Officer 404-331-4524 or 404-852-5414

RESOURCES AT RISK INFORMATION

Shoreline Type: Sand Beach, Salt Marsh**Habitat:** Tidal flats, algal beds, seagrass beds run all along shoreline through here into Alligator Harbor**Wildlife:** Blue & Stne Crab, Pnk, Wht, & Brwn Shrimp, Oysters, Clams, Scallops, Seagrass, Bald Eagle, Egrets, Herons, Terns(T), Plovers(T), Oystercatchers, FL Blk Bear (T), Kemp's Ridley(E), Green(E), Loggerhead(T), Leatherback(E) Sea Turtles**Threaten/Endangered Species:** Bald Eagle (T), Terns(T), Plovers(T), FL Blk Bear(T), Sea Turtles (Kemp's Ridley, Green, Loggerhead, Leatherback), Gulf Sturgeon,**Socio-Economic Resources:**

RESPONSE CONSIDERATIONS

Staging Area Lanark Village Boat Ramp and Yacht Club, Florida State Marine Lab Boat Ramp, Alligator Point Yacht Basin Marina**Collection Points:****Area Access:** Boat, vehicle**Spill Risk:** Alligator Point Yacht Basin Marina**Response Resources:** Alligator Point Volunteer Fire Department

PROTECTION STRATEGY INFORMATION

Tidal Range (FT): 2-3**Average Current (KTS):****Ease of Protection:** Easy**Min. Boom Length (FT):** 5,000**Boom Type:** Sorbent**Booming Method:** Protection/Exclusion**Protection Strategy:** Place exclusion boom (5,000 ft) from Turkey Point to FSU Marine Lab to protect exposed marsh.

Facility Name: Alligator Point Yacht Basin Marina

Site ID:

Data Collector (Agency): State of Florida

Survey Type: Planning

Survey Date: 2008-03-21 00:00

Managing Agency: PRIVATE OWNER

General Manager/Contact Person: TED DONHAM

Contact Phone #: 850-349-2511

SCAT Description: Franklin County Division 4

Physical Address: 1648 ALLIGATOR POINT

City: Alligator Point

State: Florida

Zip Code 32346

County: Franklin

GEOSPATIAL INFORMATION

Latitude (DMS): 29° 54' 13.920" N

Longitude (DMS): 84° 25' 3.024" W

Latitude (DD): 29.90386666

Longitude (DD): -84.41750666

SITE DESCRIPTION

Site Type: Staging Area; Boat Ramp; Marina

Access: Public

Operational Status:

Scale of Staging Area:

Hours of Operation:

Days of Operation: 24/7

Water Type: Salt

Water Body Name: Alligator Harbor

Boat Launch Capability: Boats Under 25 ft

Number of Boat Ramps: 1

Number of Boat Ramp Lanes: 1

Number of Boat Slips: 0

Number of Moorings: 0

Boat Ramp Surface Composition: Cement or Asphalt; Other

Water Depth at End of Boat Ramp: 4 - 6 feet

Wave Energy at Site: Medium

Shoreline Type in Viewable Vicinity: Seawall; Soft Sand; Rip-Rap

Access Constraints: No Access Constraints

Crane Capabilities: Suitable for small crane

Collection Point Capabilities:

Parking Capacity for Trailers: 20

Parking Capacity for Cars: 45

Parking Lot Dimensions:

Parking Surface: Paved - Concrete or Asphalt

Capable for Light or Heavy Equipment and Type:

Boom Available On-Site and Length:

ADDITIONAL AMMENITIES

Fuels Available: Diesel and Gasoline

Propane or Natural Gas Available

Water Available: Yes

Fire Hydrant:

Pumpout Available: Pumpout Available

Bathrooms Available: Restroom Facilities

Electricity Amperage Available: 30 Amp Hookup; 50 Amp H

Camping Facilities:

Food Available: Food Available (1-5 mi.)

Security Available and Hours On Duty:

GENERAL INFORMATION AND COMMENTS

Special/Pre-Planned Events and Dates:

Comments:

Photo URL:



Facility Name: Alligator Point Boat Ramp

Site ID: FR00058LJ

Data Collector (Agency): State of Florida

Survey Type: Planning

Survey Date: 2008-03-21 00:00

Managing Agency: FRANKLIN COUNTY

General Manager/Contact Person:

Contact Phone #:

SCAT Description: Franklin County Division 4

Physical Address: ~1516 Alligator Drive

City: Alligator Point

State: Florida

Zip Code 32346

County: Franklin

GEOSPATIAL INFORMATION

Latitude (DMS): 29° 54' 1.579" N

Longitude (DMS): 84° 23' 51.294" W

Latitude (DD): 29.90043871

Longitude (DD): -84.39758156

SITE DESCRIPTION

Site Type: Boat Ramp

Access: Government Owned for General Public Use

Operational Status: Open For Business

Scale of Staging Area:

Hours of Operation: 24 Hours

Days of Operation: 24/7

Water Type: Saltwater

Water Body Name: Alligator Harbor

Boat Launch Capability: Boats Under 25 ft

Number of Boat Ramps: 1

Number of Boat Ramp Lanes: 1

Number of Boat Slips: 0

Number of Moorings: 0

Boat Ramp Surface Composition: Poured in place concrete

Water Depth at End of Boat Ramp: 2 - 4 feet

Wave Energy at Site: Medium

Shoreline Type in Viewable Viscinity: Soft Sand; Soft Stem Veg.

Access Constraints: Other Difficulty

Crane Capabilities: Not suitable for crane

Collection Point Capabilities:

Parking Capacity for Trailers: 2

Parking Capacity for Cars: 0

Parking Lot Dimensions:

Parking Surface: Gravel/Sand/Dirt

Capable for Light or Heavy Equipment and Type:

Boom Available On-Site and Length:

ADDITIONAL AMMENITIES

Fuels Available: No Fuel

Propane or Natural Gas Available

Water Available: No Water

Fire Hydrant:

Pumpout Available: No Pumpout

Bathrooms Available: None

Electricity Amperage Available: No Electricity Available

Camping Facilities:

Food Available: None

Security Available and Hours On Duty:

GENERAL INFORMATION AND COMMENTS

Special/Pre-Planned Events and Dates:

Comments: 03/22/2012 10:53 AM---Bill.Sargent-----This is a small neighborhood ramp with no docks or facilities. Cramped parking for two trailers is along the road shoulder in front of a private home. Be careful not to block driveways.

Photo URL:



Facility Name: Alligator Point Boat Ramp

Site ID: WL00104LY

Data Collector (Agency): US EPA

Survey Type: Planning

Survey Date: 2008-07-03 00:00

Managing Agency: Walton County

General Manager/Contact Person:

Contact Phone #:

SCAT Description: Walton County Division 1

Physical Address: County Highway 393 North

City: Santa Rosa Beach

State: Florida

Zip Code 32459

County: Walton

GEOSPATIAL INFORMATION

Latitude (DMS): 30° 25' 9.912" N

Longitude (DMS): 86° 13' 40.662" W

Latitude (DD): 30.41941999

Longitude (DD): -86.22796166

SITE DESCRIPTION

Site Type: Staging Area; Boat Ramp

Access: Government Owned for General Public Use

Operational Status: Open For Business

Scale of Staging Area:

Hours of Operation: 24 Hours

Days of Operation: 7 days a week

Water Type: Saltwater

Water Body Name: Choctawhatchee Bay

Boat Launch Capability: Boats Under 25 ft

Number of Boat Ramps: 1

Number of Boat Ramp Lanes: 1

Number of Boat Slips: 0

Number of Moorings: 0

Boat Ramp Surface Composition: Poured in place concrete

Water Depth at End of Boat Ramp: 2 - 4 feet

Wave Energy at Site: Medium

Shoreline Type in Viewable Viscinity: Soft Sand; Soft Stem Veg.

Access Constraints: No Access Constraints; Other Difficulty

Crane Capabilities: Not suitable for crane

Collection Point Capabilities:

Parking Capacity for Trailers: 5

Parking Capacity for Cars: 10

Parking Lot Dimensions:

Parking Surface: Unknown

Capable for Light or Heavy Equipment and Type:

Boom Available On-Site and Length:

ADDITIONAL AMMENITIES

Fuels Available: No Fuel

Propane or Natural Gas Available

Water Available: No Water

Fire Hydrant:

Pumpout Available: No Pumpout

Bathrooms Available: None

Electricity Amperage Available: No Electricity Available

Camping Facilities:

Food Available: Food Available (1-5 mi.)

Security Available and Hours On Duty:

GENERAL INFORMATION AND COMMENTS

Special/Pre-Planned Events and Dates:

Comments:

Photo URL: http://ocean.floridamarine.org/waterphotos/ramp_photos/photo_id/1316/index.htm

Facility Name: Ochlocknee River State Park

Site ID: WK10055IZ

Data Collector (Agency): State of Florida

Survey Type: Planning

Survey Date: 2008-03-18 00:00

Managing Agency: Florida Department of Environmental Protection

General Manager/Contact Person: KEVIN PATTON

Contact Phone #: 850-962-2771

SCAT Description: Franklin County Division 4

Physical Address: STATE PARK ROAD - 1st right after park entrance

City: Sopchoppy

State: Florida

Zip Code 32358

County: Wakulla

GEOSPATIAL INFORMATION

Latitude (DMS): 29° 59' 58.740" N

Longitude (DMS): 84° 28' 50.844" W

Latitude (DD): 29.99964999

Longitude (DD): -84.48078999

SITE DESCRIPTION

Site Type: Staging Area; Boat Ramp

Access: Government Owned for General Public Use

Operational Status: Open For Business

Scale of Staging Area:

Hours of Operation: 8:00:00 AM-6:30:00 PM

Days of Operation: 7 days, Sunrise to Sunset

Water Type: Brackish

Water Body Name: Ochlockonee River

Boat Launch Capability: Boats Under 25 ft

Number of Boat Ramps: 2

Number of Boat Ramp Lanes: 2

Number of Boat Slips: 0

Number of Moorings: 0

Boat Ramp Surface Composition: Poured in place concrete

Water Depth at End of Boat Ramp: 4 - 6 feet

Wave Energy at Site: Low

Shoreline Type in Viewable Viscinity: Soft Stem Veg.

Access Constraints: No Access Constraints

Crane Capabilities: Suitable for small crane

Collection Point Capabilities:

Parking Capacity for Trailers: 0

Parking Capacity for Cars: 0

Parking Lot Dimensions:

Parking Surface: Grass

Capable for Light or Heavy Equipment and Type:

Boom Available On-Site and Length:

ADDITIONAL AMMENITIES

Fuels Available: No Fuel

Propane or Natural Gas Available No

Water Available: Yes

Fire Hydrant:

Pumpout Available: No Pumpout

Bathrooms Available: Port-a-let

Electricity Amperage Available: No Electricity Available

Camping Facilities: Tent, Pop-up and RV

Food Available: Food Available (1-5 mi.)

Security Available and Hours On Duty:

GENERAL INFORMATION AND COMMENTS

Special/Pre-Planned Events and Dates:

Comments:

Photo URL: http://ocean.floridamarine.org/waterphotos/ramp_photos/photo_id/1701/index.htm

Facility Name: Ochlocknee Bay Landing

Site ID: FR00007CS

Data Collector (Agency): State of Florida

Survey Type: Planning

Survey Date: 2008-03-18 00:00

Managing Agency: Franklin County

General Manager/Contact Person:

Contact Phone #:

SCAT Description: Franklin County Division 4

Physical Address: south of Ochlockonee Bridge (Highway 98)

City: Alligator Point

State: Florida

Zip Code 32346

County: Franklin

GEOSPATIAL INFORMATION

Latitude (DMS): 29° 57' 39.750" N

Longitude (DMS): 84° 23' 5.718" W

Latitude (DD): 29.96104166

Longitude (DD): -84.38492166

SITE DESCRIPTION

Site Type: Boat Ramp

Access: Government Owned for General Public Use

Operational Status: Open For Business

Scale of Staging Area:

Hours of Operation: 24 Hours

Days of Operation: 24/7

Water Type: Brackish

Water Body Name: Ochlockonee Bay

Boat Launch Capability: Boats Under 25 ft

Number of Boat Ramps: 2

Number of Boat Ramp Lanes: 1

Number of Boat Slips: 0

Number of Moorings: 0

Boat Ramp Surface Composition: Poured in place concrete

Water Depth at End of Boat Ramp: 4 - 6 feet

Wave Energy at Site: Medium

Shoreline Type in Viewable Viscinity: Sand/Clay/Mud; Rip-Rap; Hard Stem Veg.

Access Constraints: Other Difficulty

Crane Capabilities: Not suitable for crane

Collection Point Capabilities:

Parking Capacity for Trailers: 8

Parking Capacity for Cars: 0

Parking Lot Dimensions:

Parking Surface: Multiple Surfaces

Capable for Light or Heavy Equipment and Type:

Boom Available On-Site and Length:

ADDITIONAL AMMENITIES

Fuels Available: No Fuel

Propane or Natural Gas Available

Water Available: No Water

Fire Hydrant:

Pumpout Available: No Pumpout

Bathrooms Available: None

Electricity Amperage Available: No Electricity Available

Camping Facilities:

Food Available: Food Available (1-5 mi.)

Security Available and Hours On Duty:

GENERAL INFORMATION AND COMMENTS

Special/Pre-Planned Events and Dates:

Comments: 03/22/2012 10:32 AM---Bill.Sargent-----Floating dock for loading and unloading.

Photo URL: http://ocean.floridamarine.org/waterphotos/ramp_photos/photo_id/1628/index.htm