

Oil Spill Program Offices, Response Equipment & Evacuation Staging Areas 2021



George P. Bush, Commissioner



- Response Trailers
- Hurricane Staging Areas

Oil Spill Regions

- Region 1
- Region 2
- Region 3
- Region 4
- Region 5

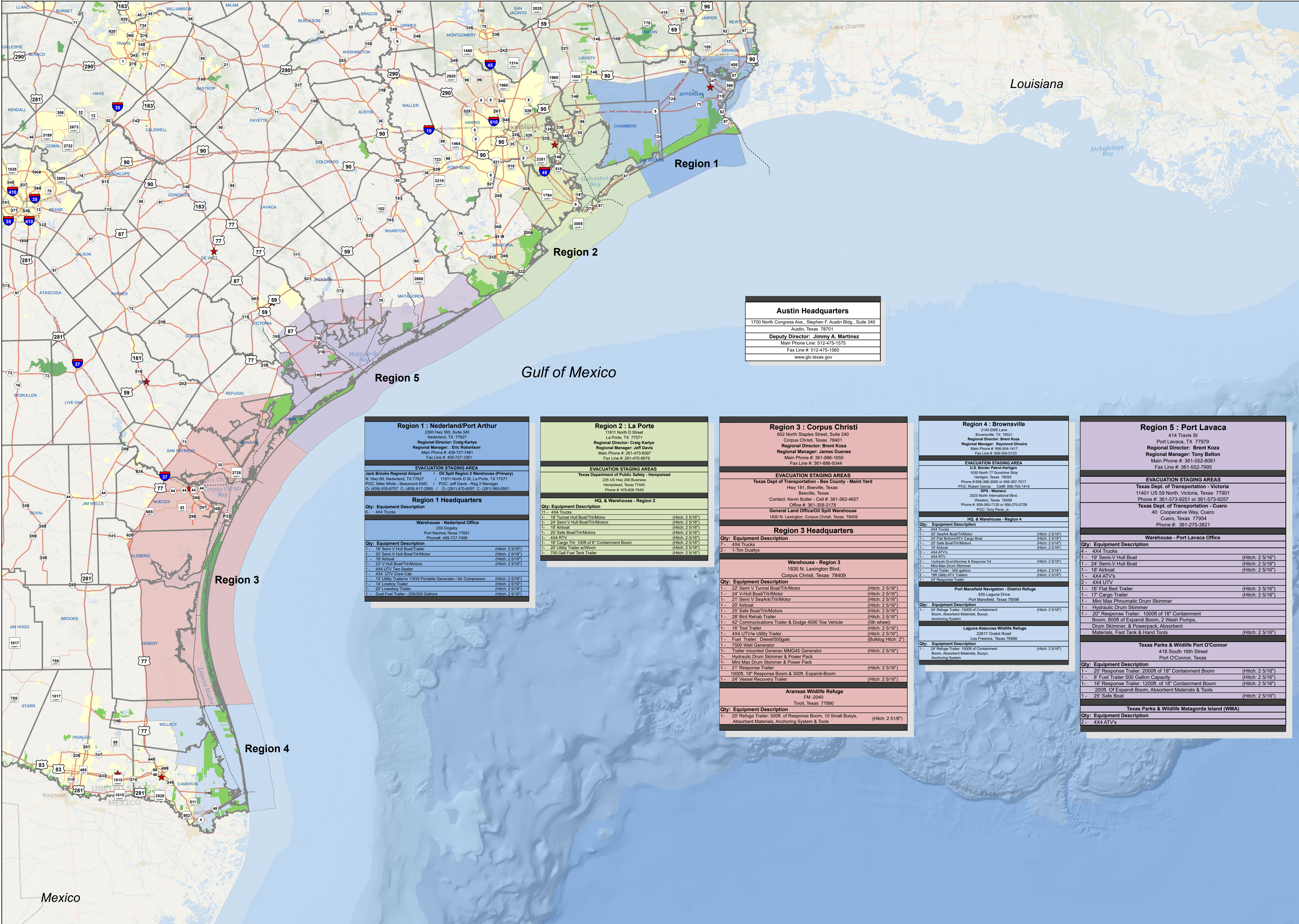
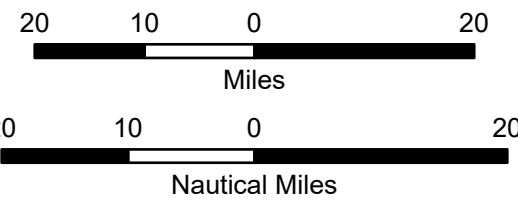
Evacuation Staging Areas



The Texas General Land Office makes no representations or warranties regarding the accuracy or completeness of the information depicted on this map or the data from which it was produced. This map is not suitable for navigational purposes and does not purport to depict boundaries of private and public land.

Produced on 08/19/2021
GLO Oil Spill Logistics Team
GLO Geospatial Technology Services

1:1,107,296



Austin Headquarters
1700 North Congress Ave., Stephen F. Austin Bldg., Suite 340
Austin, Texas 78701
Deputy Director: Jimmy A. Martinez
Main Phone Line: 512-475-1575
Fax Line #: 512-475-1560
www.glo.texas.gov

Region 1 : Nederland/Port Arthur
2300 Hwy 365, Suite 340 Nederland, TX 77627 Regional Director: Craig Kartye Regional Manager: Eric Robertson Main Phone #: 409-727-7481 Fax Line #: 409-727-1261
EVACUATION STAGING AREA
Jack Brooks Regional Airport / Oil Spill Region 2 Warehouse (Primary) N. Hwy 69, Nederland, TX 77627 / 11811 North D St. La Porte, TX 77571 POC: Mike White - Beaumont EMC / POC: Jeff Davis - Reg 2 Manager G: (409) 835-8757 G: (409) 617-2380 / G: (281) 470-6597 C: (281) 960-5501
Region 1 Headquarters
Qty: Equipment Description 6 - 4X4 Trucks
Warehouse - Nederland Office
239 Grigsby Port Neches, Texas 77651 Phone#: 409-727-7499
Qty: Equipment Description
1 - 16' Semi V Hull Boat/Trailer (Hitch: 2 5/16") 1 - 20' Semi V Hull Boat/Trailer/Motor (Hitch: 2 5/16") 1 - 18' Airboat (Hitch: 2 5/16") 1 - 23' V Hull Boat/Trailer/Motors (Hitch: 2 5/16") 1 - 4X4 UTV Two Seater (Hitch: 2 5/16") 1 - 4X4 UTV Crew Cab (Hitch: 2 5/16") 1 - 10' Utility Trailer w/ 11KW Portable Generator / Air Compressor (Hitch: 2 5/16") 1 - 14' Lowboy Trailer (Hitch: 2 5/16") 1 - 20' Lowboy Trailer (Hitch: 2 5/16") 1 - Dual Fuel Trailer - 250/250 Gallons (Hitch: 2 5/16")

Region 2 : La Porte
11811 North D Street La Porte, TX 77571 Regional Director: Craig Kartye Regional Manager: Jeff Davis Main Phone #: 281-470-6597 Fax Line #: 281-470-6673
EVACUATION STAGING AREAS
Texas Department of Public Safety - Hempstead 235 US Hwy 290 Business Hempstead, Texas 77445 Phone #: 979-826-7649
HQ. & Warehouse - Region 2
Qty: Equipment Description 11 - 4X4 Trucks (Hitch: 2 5/16") 1 - 18' Tunnel Hull Boat/Trailer/Motor (Hitch: 2 5/16") 1 - 24' Semi V Hull Boat/Trailer/Motors (Hitch: 2 5/16") 1 - 18' Airboat (Hitch: 2 5/16") 1 - 29' Safe Boat/Trailer/Motors (Hitch: 2 5/16") 1 - 4X4 RTV (Hitch: 2 5/16") 1 - 18' Cargo Trk - 100ft of 6" Containment Boom (Hitch: 2 5/16") 1 - 20' Utility Trailer w/Winch (Hitch: 2 5/16") 1 - 750 Gall Fuel Tank Trailer (Hitch: 2 5/16")

Region 3 : Corpus Christi
602 North Staples Street, Suite 240 Corpus Christi, Texas 78401 Regional Director: Brent Koza Regional Manager: James Duenes Main Phone #: 361-886-1650 Fax Line #: 361-886-5344
EVACUATION STAGING AREAS
Texas Dept of Transportation - Bee County - Maint Yard Hwy 191, Beeville, Texas Contact: Kevin Butler - Cell #: 361-362-4657 Office #: 361-358-3173 General Land Office/Oil Spill Warehouse 1830 N. Lexington, Corpus Christi, Texas 78409
Region 3 Headquarters
Qty: Equipment Description 7 - 4X4 Trucks 2 - 1-Ton Duallys
Warehouse - Region 3
1830 N. Lexington Blvd, Corpus Christi, Texas 78409
Qty: Equipment Description
1 - 22' Semi V Tunnel Boat/Trailer/Motor (Hitch: 2 5/16") 1 - 24' V-Hull Boat/Trailer/Motor (Hitch: 2 5/16") 1 - 21' Semi V SeaArk/Trailer/Motor (Hitch: 2 5/16") 1 - 20' Airboat (Hitch: 2 5/16") 1 - 25' Safe Boat/Trailer/Motors (Hitch: 2 5/16") 1 - 28' Bird Rehab Trailer (Hitch: 2 5/16") 1 - 42' Communications Trailer & Dodge 4500 Tow Vehicle (5th wheel) (Hitch: 2 5/16") 1 - 16' Tool Trailer (Hitch: 2 5/16") 1 - 4X4 UTV w/ Utility Trailer (Bulldog Hitch: 2") 1 - Fuel Trailer - Diesel/500gals (Hitch: 2 5/16") 1 - 7500 Watt Generator (Hitch: 2 5/16") 1 - Trailer mounted Generac MMG45 Generator (Hitch: 2 5/16") 1 - Hydraulic Drum Skimmer & Power Pack (Hitch: 2 5/16") 1 - Mini Max Drum Skimmer & Power Pack (Hitch: 2 5/16") 1 - 21' Response Trailer (Hitch: 2 5/16") 1 - 1000ft. 18" Response Boom & 300ft. Expandi-Boom (Hitch: 2 5/16") 1 - 24' Vessel Recovery Trailer (Hitch: 2 5/16")
Aransas Wildlife Refuge
FM -2040 Tivoli, Texas 77990
Qty: Equipment Description
1 - 20' Refuge Trailer: 500ft. of Response Boom, 10 Small Buoys, Absorbent Materials, Anchoring System & Tools (Hitch: 2 5/16")

Region 4 : Brownsville
2145 EMS Lane Brownsville, TX 78021 Regional Director: Brent Koza Regional Manager: Raymond Oliveira Main Phone #: 361-504-1417 Fax Line #: 361-504-0123
EVACUATION STAGING AREA
U.S. Border Patrol-Harlingen 1600 North 77 Sunline Strip Harlingen, Texas 78550 Phone #: 361-366-3000 or 361-367-7017 POC: Ruben Garcia - Cell: 361-793-1414 DPS - Weslaco 2525 North International Blvd. Weslaco, Texas 78599 Phone #: 361-505-7120 or 361-270-0728 POC: Tony Pina, Jr.
HQ. & Warehouse - Region 4
Qty: Equipment Description 4 - 4X4 Trucks (Hitch: 2 5/16") 1 - 27' SeaArk Boat/Trailer/Motor (Hitch: 2 5/16") 1 - 24' Flat Bottom/ATV Cargo Boat (Hitch: 2 5/16") 1 - 23' Safe Boat/Trailer/Motors (Hitch: 2 5/16") 1 - 16' Airboat (Hitch: 2 5/16") 3 - 4X4 ATVs 1 - 4X4 RTV 2 - Hydraulic Drum-Skimmer & Response Tr (Hitch: 2 5/16") 1 - Mini-Max Drum Skimmer (Hitch: 2 5/16") 1 - Fuel Trailer - 500 gallons (Hitch: 2 5/16") 2 - 18ft. Utility ATV Trailers (Hitch: 2 5/16") 1 - 24' Response Trailer (Hitch: 2 5/16")
Port Mansfield Navigation - District Refuge
630 Laguna Drive Port Mansfield, Texas 78598
Qty: Equipment Description
1 - 24' Refuge Trailer: 1500ft of Containment Boom, Absorbent Materials, Buoys, Anchoring System (Hitch: 2 5/16")
Laguna Atascosa Wildlife Refuge
22817 Coolidge Road Los Fresnos, Texas 78566
Qty: Equipment Description
1 - 24' Refuge Trailer: 1500ft of Containment Boom, Absorbent Materials, Buoys, Anchoring System (Hitch: 2 5/16")

Region 5 : Port Lavaca
414 Travis St Port Lavaca, TX 77979 Regional Director: Brent Koza Regional Manager: Tony Belton Main Phone #: 361-552-8081 Fax Line #: 361-552-7995
EVACUATION STAGING AREAS
Texas Dept. of Transportation - Victoria 11401 US 59 North, Victoria, Texas 77901 Phone #: 361-573-9251 or 361-573-9257 Texas Dept. of Transportation - Cuero 40 Cooperative Way, Cuero Cuero, Texas 77954 Phone #: 361-275-3821
Warehouse - Port Lavaca Office
Qty: Equipment Description 4 - 4X4 Trucks 1 - 19' Semi-V Hull Boat (Hitch: 2 5/16") 1 - 24' Semi-V Hull Boat (Hitch: 2 5/16") 1 - 18' Airboat (Hitch: 2 5/16") 1 - 4X4 ATVs 2 - 4X4 UTV 1 - 16' Flat Bed Trailer (Hitch: 2 5/16") 1 - 17' Cargo Trailer (Hitch: 2 5/16") 1 - Mini Max Pneumatic Drum Skimmer 1 - Hydraulic Drum Skimmer 1 - 20' Response Trailer: 1000ft of 18" Containment Boom, 800ft of Expandi Boom, 2 Wash Pumps, Drum Skimmer, & Powerpack Absorbent Materials, Fast Tank & Hand Tools (Hitch: 2 5/16")
Texas Parks & Wildlife Port O'Connor
418 South 16th Street Port O'Connor, Texas
Qty: Equipment Description
1 - 20' Response Trailer: 2000ft of 18" Containment Boom (Hitch: 2 5/16") 1 - 8' Fuel Trailer 500 Gallon Capacity (Hitch: 2 5/16") 1 - 16' Response Trailer: 1200ft. of 18" Containment Boom (Hitch: 2 5/16") 1 - 200ft. Of Expandi Boom, Absorbent Materials & Tools (Hitch: 2 5/16") 1 - 25' Safe Boat (Hitch: 2 5/16")
Texas Parks & Wildlife Matagorda Island (WMA)
Qty: Equipment Description 2 - 4X4 ATVs