

Quadrant: UMBRELLA POINT

Map # :52

Biological Information for this quadrant represents known concentration areas of occurrence.

Biological Resources

Bird

RARNUM	NAME	S	F	T	E	CONC	J	F	M	A	M	J	J	A	S	O	N	D	Nesting	Migrating	Molting
0033	Cormorants					-	X	X	X	X	X	X	X	X	X	X	X	X	-	-	-
	Diving birds					-	X	X	X	X	X	X	X	X	X	X	X	X	-	-	-
	Grebes					-	X	X	X	X	X	X			X	X	X	X	-	-	-
	Loons					-	X	X	X	X	X					X	X	X	-	-	-
	Pelicans					-	X	X	X	X	X	X	X	X	X	X	X	X	-	-	-
	Black skimmer					-	X	X	X	X	X	X	X	X	X	X	X	X	-	-	-
	Gulls					-	X	X	X	X	X	X	X	X	X	X	X	X	-	-	-
	Terns					-	X	X	X	X	X	X	X	X	X	X	X	X	-	-	-
	Diving ducks					-	X	X	X	X	X					X	X	X	-	-	-

Fish

RARNUM	NAME	S	F	T	E	CONC	J	F	M	A	M	J	J	A	S	O	N	D	Spawning	Eggs	Larvae	Juveniles	Adults
0498	Gizzard shad					COMMON	X	X	X	X	X	X	X	X	X	X	X	X	-	-	-	-	JAN-DEC
	Atlantic croaker					HIGHLY-ABUNDANT	X	X	X	X	X	X	X	X	X	X	X	X	-	-	JAN-JUN	JAN-DEC	JAN-DEC
	Atlantic sharpnose shark					-				X	X	X	X	X	X	X			JUN-JUN	MAY-JUN	JUN-OCT	-	APR-OCT
	Bay anchovy					ABUNDANT	X	X	X	X	X	X	X	X	X	X	X	X	MAR-NOV	MAR-NOV	MAR-NOV	FEB-NOV	JAN-DEC
	Black drum					COMMON	X	X	X	X	X	X	X	X	X	X	X	X	-	-	-	JAN-DEC	JAN-DEC
	Bull shark					ABUNDANT	X	X	X	X	X	X	X	X	X	X	X	X	-	MAY-AUG	MAY-AUG	APR-NOV	JAN-DEC
	Gafftopsail catfish					COMMON				X	X	X	X	X	X	X			APR-MAY	-	-	APR-OCT	APR-OCT
	Gulf menhaden					HIGHLY-ABUNDANT	X	X	X	X	X	X	X	X	X	X	X	X	-	-	-	JAN-DEC	APR-DEC
	Hardhead catfish					ABUNDANT	X	X	X	X	X	X	X	X	X	X	X	X	MAY-AUG	MAY-SEP	MAY-SEP	JUN-OCT	JAN-DEC
	Pinfish					COMMON				X	X	X	X	X	X				-	-	-	MAR-SEP	-
	Red drum					COMMON	X	X	X	X	X	X	X	X	X	X	X	X	-	-	-	JAN-DEC	JAN-DEC
	Sand seatrout					COMMON	X	X	X	X	X	X	X	X	X	X	X	X	-	-	-	JAN-DEC	JAN-DEC
	Sheepshead					COMMON	X	X	X	X	X	X	X	X	X	X	X	X	-	-	-	JUN-MAR*	JAN-DEC
	Southern flounder					ABUNDANT	X	X	X	X	X	X	X	X	X	X	X	X	-	-	-	JAN-DEC	JAN-DEC
	Southern kingfish					COMMON								X	X	X	X		-	-	-	AUG-NOV	-
	Spot					HIGHLY-ABUNDANT	X	X	X	X	X	X	X	X	X	X	X	X	-	-	-	MAR-NOV	JAN-DEC
	Spotted seatrout					COMMON	X	X	X	X	X	X	X	X	X	X	X	X	-	-	MAR-JUL	AUG-NOV	JAN-DEC
	Striped mullet					COMMON	X	X	X	X	X	X	X	X	X	X	X	X	-	-	-	JAN-DEC	JAN-DEC
	Tarpon					RARE			X	X	X	X	X	X	X	X	X		-	-	-	MAR-NOV	-
	White mullet					COMMON				X	X	X	X	X	X				-	-	-	APR-OCT	-
	Gulf killifish					RARE	X	X	X	X	X	X	X	X	X	X	X	X	MAR-SEP	MAR-SEP	MAR-OCT	JAN-DEC	JAN-DEC
	Silver perch					RARE	X	X	X	X	X	X	X	X	X	X	X	X	MAY-SEP	MAY-SEP	MAY-SEP	OCT-OCT	JAN-DEC
	Silversides					COMMON	X	X	X	X	X	X	X	X	X	X	X	X	MAR-AUG	MAR-AUG	MAR-AUG	JAN-DEC	JAN-DEC
	Alligator gar					COMMON	X	X	X	X	X	X	X	X	X	X	X	X	-	-	-	JAN-DEC	JAN-DEC
	Blue catfish					COMMON	X	X	X	X	X	X	X	X	X	X	X	X	-	-	-	JAN-DEC	JAN-DEC
	Smallmouth buffalo					-	X	X	X	X	X	X	X	X	X	X	X	X	-	-	-	-	JAN-DEC
	Spotted gar					COMMON	X	X	X	X	X	X	X	X	X	X	X	X	APR-MAY	APR-MAY	-	JAN-DEC	JAN-DEC
	Bay whiff					ABUNDANT	X	X	X	X	X	X	X	X	X	X	X	X	-	-	-	MAY-AUG	MAY-AUG
	Spotfin mojarra					RARE								X	X				-	-	-	-	-
	Atlantic bumper					RARE								X	X				-	-	-	-	AUG-SEP
	Blacktip shark					-			X	X	X	X	X	X	X	X	X	X	MAY-JUN	MAY-JUN	MAY-NOV	MAR-NOV	MAY-JUN
	Crevalle jack					COMMON			X	X	X	X	X	X	X	X	X		-	-	-	MAR-NOV	-
	Gulf butterfish					RARE				X	X								-	-	-	-	-
	Spanish mackerel					COMMON									X	X			-	-	-	SEP-OCT	SEP-OCT
0502	Gizzard shad					COMMON	X	X	X	X	X	X	X	X	X	X	X	X	-	-	-	-	JAN-DEC
	Atlantic croaker					HIGHLY-ABUNDANT	X	X	X	X	X	X	X	X	X	X	X	X	-	-	JAN-JUN	JAN-DEC	JAN-DEC
	Atlantic sharpnose shark					-				X	X	X	X	X	X	X			JUN-JUN	MAY-JUN	JUN-OCT	-	APR-OCT
	Bay anchovy					ABUNDANT	X	X	X	X	X	X	X	X	X	X	X	X	MAR-NOV	MAR-NOV	MAR-NOV	FEB-NOV	JAN-DEC
	Black drum					COMMON	X	X	X	X	X	X	X	X	X	X	X	X	-	-	-	JAN-DEC	JAN-DEC
	Bull shark					ABUNDANT	X	X	X	X	X	X	X	X	X	X	X	X	-	MAY-AUG	MAY-AUG	APR-NOV	JAN-DEC
	Gafftopsail catfish					COMMON				X	X	X	X	X	X	X			APR-MAY	-	-	APR-OCT	APR-OCT
	Gulf menhaden					HIGHLY-ABUNDANT	X	X	X	X	X	X	X	X	X	X	X	X	-	-	-	JAN-DEC	APR-DEC
	Hardhead catfish					ABUNDANT	X	X	X	X	X	X	X	X	X	X	X	X	MAY-AUG	MAY-SEP	MAY-SEP	JUN-OCT	JAN-DEC
	Pinfish					COMMON				X	X	X	X	X	X				-	-	-	MAR-SEP	-
	Red drum					COMMON	X	X	X	X	X	X	X	X	X	X	X	X	-	-	-	JAN-DEC	JAN-DEC
	Sand seatrout					COMMON	X	X	X	X	X	X	X	X	X	X	X	X	-	-	-	JAN-DEC	JAN-DEC
	Sheepshead					COMMON	X	X	X	X	X	X	X	X	X	X	X	X	-	-	-	JUN-MAR*	JAN-DEC
	Southern flounder					ABUNDANT	X	X	X	X	X	X	X	X	X	X	X	X	-	-	-	JAN-DEC	JAN-DEC
	Southern kingfish					COMMON								X	X	X	X		-	-	-	AUG-NOV	-
	Spot					HIGHLY-ABUNDANT	X	X	X	X	X	X	X	X	X	X	X	X	-	-	-	MAR-NOV	JAN-DEC
	Spotted seatrout					COMMON	X	X	X	X	X	X	X	X	X	X	X	X	-	-	MAR-JUL	AUG-NOV	JAN-DEC
	Striped mullet					COMMON	X	X	X	X	X	X	X	X	X	X	X	X	-	-	-	JAN-DEC	JAN-DEC
	Tarpon					RARE			X	X	X	X	X	X	X	X	X		-	-	-	MAR-NOV	-
	White mullet					COMMON				X	X	X	X	X	X				-	-	-	APR-OCT	-
	Gulf killifish					RARE	X	X	X	X	X	X	X	X	X	X	X	X	MAR-SEP	MAR-SEP	MAR-OCT	JAN-DEC	JAN-DEC
	Silver perch					RARE	X	X	X	X	X	X	X	X	X	X	X	X	MAY-SEP	MAY-SEP	MAY-SEP	OCT-OCT	JAN-DEC
	Silversides					COMMON	X	X	X	X	X	X	X	X	X	X	X	X	MAR-AUG	MAR-AUG	MAR-AUG	JAN-DEC	JAN-DEC

Fish

RARNUM	NAME	S F	T E	CONC	J	F	M	A	M	J	J	A	S	O	N	D	Spawning	Eggs	Larvae	Juveniles	Adults
	Alligator gar			COMMON	X	X	X	X	X	X	X	X	X	X	X	X	-	-	-	JAN-DEC	JAN-DEC
	Blue catfish			COMMON	X	X	X	X	X	X	X	X	X	X	X	X	-	-	-	JAN-DEC	JAN-DEC
	Smallmouth buffalo			-	X	X	X	X	X	X	X	X	X	X	X	X	-	-	-	-	JAN-DEC
	Spotted gar			COMMON	X	X	X	X	X	X	X	X	X	X	X	X	APR-MAY	APR-MAY	-	JAN-DEC	JAN-DEC
	Bay whiff			ABUNDANT	X	X	X	X	X	X	X	X	X	X	X	X	-	-	-	MAY-AUG	MAY-AUG
	Spotfin mojarra			RARE									X	X			-	-	-	-	-
	Atlantic bumper			RARE									X	X			-	-	-	-	AUG-SEP
	Blacktip shark			-			X	X	X	X	X	X	X	X	X		MAY-JUN	MAY-JUN	MAY-NOV	MAR-NOV	MAY-JUN
	Crevalle jack			COMMON			X	X	X	X	X	X	X	X	X		-	-	-	MAR-NOV	-
	Gulf butterfish			RARE				X	X								-	-	-	-	-
	Spanish mackerel			COMMON									X	X			-	-	-	SEP-OCT	SEP-OCT
	Spinner shark			-					X	X	X	X	X	X			MAY-JUN	MAY-JUN	MAY-JUL	MAY-OCT	MAY-OCT

Invertebrate

RARNUM	NAME	S F	T E	CONC	J	F	M	A	M	J	J	A	S	O	N	D	Spawning	Eggs	Larvae	Juveniles	Adults
0661	Atlantic rangia			ABUNDANT	X	X	X	X	X	X	X	X	X	X	X	X	MAR-OCT	-	MAR-OCT	JAN-DEC	JAN-DEC
	Brief squid			RARE						X	X	X	X	X	X		JUN-NOV	JUN-NOV	JUN-NOV	JUN-NOV	JUN-NOV
	Blue crab			HIGHLY-ABUNDANT	X	X	X	X	X	X	X	X	X	X	X	X	MAR-OCT	MAR-OCT	MAR-NOV	JAN-DEC	JAN-DEC
	Brown shrimp			COMMON		X	X	X	X	X	X	X	X	X	X	X	-	-	FEB-APR	APR-DEC	-
	Grass shrimp			ABUNDANT	X	X	X	X	X	X	X	X	X	X	X	X	JAN-DEC	JAN-DEC	JAN-DEC	JAN-DEC	JAN-DEC
	White shrimp			HIGHLY-ABUNDANT	X	X	X	X	X	X	X	X	X	X	X	X	-	-	MAY-OCT	MAY-DEC	JAN-DEC
0686	Atlantic rangia			ABUNDANT	X	X	X	X	X	X	X	X	X	X	X	X	MAR-OCT	-	MAR-OCT	JAN-DEC	JAN-DEC
	Eastern oyster			UNCONSOLIDATED	X	X	X	X	X	X	X	X	X	X	X	X	MAR-DEC	MAR-DEC	-	-	JAN-DEC
	Brief squid			RARE						X	X	X	X	X	X		JUN-NOV	JUN-NOV	JUN-NOV	JUN-NOV	JUN-NOV
	Blue crab			HIGHLY-ABUNDANT	X	X	X	X	X	X	X	X	X	X	X	X	MAR-OCT	MAR-OCT	MAR-NOV	JAN-DEC	JAN-DEC
	Brown shrimp			COMMON		X	X	X	X	X	X	X	X	X	X	X	-	-	FEB-APR	APR-DEC	-
	Grass shrimp			ABUNDANT	X	X	X	X	X	X	X	X	X	X	X	X	JAN-DEC	JAN-DEC	JAN-DEC	JAN-DEC	JAN-DEC
	White shrimp			HIGHLY-ABUNDANT	X	X	X	X	X	X	X	X	X	X	X	X	-	-	MAY-OCT	MAY-DEC	JAN-DEC
0687	Atlantic rangia			ABUNDANT	X	X	X	X	X	X	X	X	X	X	X	X	MAR-OCT	-	MAR-OCT	JAN-DEC	JAN-DEC
	Eastern oyster			REEF	X	X	X	X	X	X	X	X	X	X	X	X	MAR-DEC	MAR-DEC	-	-	JAN-DEC
	Brief squid			RARE						X	X	X	X	X	X		JUN-NOV	JUN-NOV	JUN-NOV	JUN-NOV	JUN-NOV
	Blue crab			HIGHLY-ABUNDANT	X	X	X	X	X	X	X	X	X	X	X	X	MAR-OCT	MAR-OCT	MAR-NOV	JAN-DEC	JAN-DEC
	Brown shrimp			COMMON		X	X	X	X	X	X	X	X	X	X	X	-	-	FEB-APR	APR-DEC	-
	Grass shrimp			ABUNDANT	X	X	X	X	X	X	X	X	X	X	X	X	JAN-DEC	JAN-DEC	JAN-DEC	JAN-DEC	JAN-DEC
	White shrimp			HIGHLY-ABUNDANT	X	X	X	X	X	X	X	X	X	X	X	X	-	-	MAY-OCT	MAY-DEC	JAN-DEC
0693	Atlantic rangia			ABUNDANT	X	X	X	X	X	X	X	X	X	X	X	X	MAR-OCT	-	MAR-OCT	JAN-DEC	JAN-DEC
	Eastern oyster			LOW	X	X	X	X	X	X	X	X	X	X	X	X	MAR-DEC	MAR-DEC	-	-	JAN-DEC
	Brief squid			RARE						X	X	X	X	X	X		JUN-NOV	JUN-NOV	JUN-NOV	JUN-NOV	JUN-NOV
	Blue crab			HIGHLY-ABUNDANT	X	X	X	X	X	X	X	X	X	X	X	X	MAR-OCT	MAR-OCT	MAR-NOV	JAN-DEC	JAN-DEC
	Brown shrimp			COMMON		X	X	X	X	X	X	X	X	X	X	X	-	-	FEB-APR	APR-DEC	-
	Grass shrimp			ABUNDANT	X	X	X	X	X	X	X	X	X	X	X	X	JAN-DEC	JAN-DEC	JAN-DEC	JAN-DEC	JAN-DEC
	White shrimp			HIGHLY-ABUNDANT	X	X	X	X	X	X	X	X	X	X	X	X	-	-	MAY-OCT	MAY-DEC	JAN-DEC

Marine Mammal

RARNUM	NAME	S F	T E	CONC	J	F	M	A	M	J	J	A	S	O	N	D	Mating	Calving	Pupping	Molting
0739	West Indian manatee	S/F	E/E	VERY-RARE						X	X	X					-	-	-	-

Reptile

RARNUM	NAME	S F	T E	CONC	J	F	M	A	M	J	J	A	S	O	N	D	Nesting	Hatching	Internesting	Juveniles	Adults
0761	Kemp's ridley sea turtle	S/F	E/E	COMMON				X	X	X	X	X	X	X	X		-	-	-	APR-NOV	-

Terrestrial Mammal

RARNUM	NAME	S F	T E	CONC	J	F	M	A	M	J	J	A	S	O	N	D	Nesting
0798	Northern river otter			-	X	X	X	X	X	X	X	X	X	X	X	X	N/A

Human Use Resources

Category	RARNUM	NAME	CONTACT	CONTACT INFO
Boat Ramp	2045	McCullum Park		chamberstrinitysanjac@mccollum
Facility	1126	Point Barrow Separation Facility	Craig Alexander	281-573-1800

1. Incident Name	2. Operational Period (Date/Time)	Assignment List ICS 204-OS
------------------	-----------------------------------	----------------------------

3. Branch	4. Division/Group
-----------	-------------------

5. Operations Personnel	
Operations Section Chief	_____
Branch Director	_____
Division/Group Supervisor	_____

6. Resources Assigned This Period						"X" Indicates 204a attachment with special instructions
Resource Identifier	Leader	Contact Info #	# of Persons	Reporting Info/Notes/Remarks		

7. Assignments

SAFETY NOTE: Numerous submerged pilings reported in area.

8. Site Number: 52-A	9. Quad Name Umbrella Point	10. NOAA Chart # 11326	11. GLO Atlas Page # 52	12. County Chambers
-------------------------	--------------------------------	---------------------------	----------------------------	------------------------

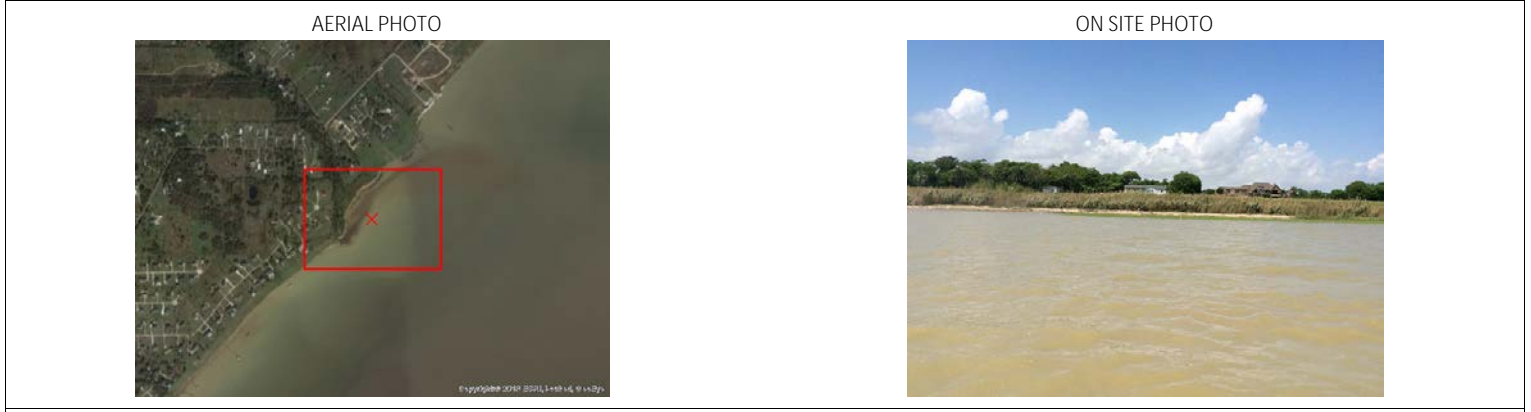
13. Site Information: Point Barrow Creek Point Barrow Creek	14. Latitude From: 29°43'59"	To:
	15. Longitude From: 94°50'23"	To:

16. Closest Boat Ramp Fort Anahauc Park	17. Distance From Ramp 8 miles	18. Boat Type Multiple Types
--	-----------------------------------	---------------------------------

19. Directions From Local Sector East on I-10 from Houston to HWY 61. Exit right on Hwy 563 to Anahuac. In Anahuac travel south on Hwy 61 (Main Street) to Fort Anahuac Park, 1 mi. on right. Boat ramps are at SW corner of park	20. Closest Airport Baytown airport, Baytown (HPY)
	21. Closest Helo Spot Baytown airport 29 47' 09"N 94 5 7' 09"W

22. Trustee/Contact Numbers	23. Resources at Risk	24. Width of inlet 50ft in ft.
USCG: (281) 464-4800 RRC: (713) 869-5001	Atlas Priority Medium	25. Water depth in ft. 1ft
USCG DUTY: (800) 424-4800 TPWD: (281) 842-8100	Environmental Medium	26. Current Slow
TGLO: (800) 832-8224 NRDA: (512) 463 -9309	Economic	27. No. of Personnel 2
TCEQ: (713) 767-3563 USFWS: (281) 286-8282		

25. Booming Strategy **Recommendation**
Boom to prevent movement of oil into Point Barrow Creek. Deploy backup boom as necessary. Note: Product discharged into lower Trinity Bay tends to collect along this shoreline between Umbrella Point and Point Barrow.



29. Prepared By:	30. Reviewed by (PSC)	31. Reviewed by (OSC):
Assignment List	ICS 204 OS (Geographic Response Plan)	Project Updated:

"Response strategies may need to be modified to account for changes due to seasonality, weather conditions, spill characteristics, tides and any other considerations."

1. Incident Name	2. Operational Period (Date/Time)	Assignment List ICS 204-OS
------------------	-----------------------------------	----------------------------

3. Branch	4. Division/Group
-----------	-------------------

5. Operations Personnel	
Operations Section Chief	_____
Branch Director	_____
Division/Group Supervisor	_____

6. Resources Assigned This Period "X" Indicates 204a attachment with special instructions

Resource Identifier	Leader	Contact Info #	# of Persons	Reporting Info/Notes/Remarks

7. Assignments

SAFETY NOTE: Numerous submerged pilings reported in area.

8. Site Number: 52-B	9. Quad Name Umbrella Point	10. NOAA Chart # 11326	11. GLO Atlas Page # 52	12. County Chambers
-------------------------	--------------------------------	---------------------------	----------------------------	------------------------

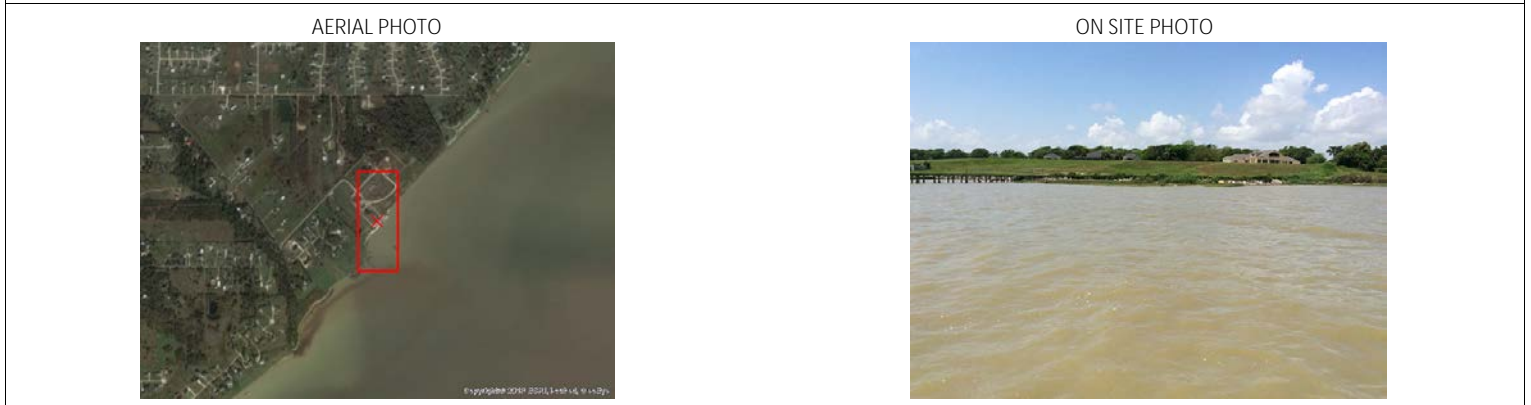
13. Site Information: Point Barrow Marsh (north) Point Barrow marsh (North of Point Barrow)	14. Latitude From: 29 44' 38"	To:
	15. Longitude From: 94 49' 45"	To:

16. Closest Boat Ramp Fort Anahauc Park	17. Distance From Ramp 8 miles	18. Boat Type Multiple Types
--	-----------------------------------	---------------------------------

19. Directions From Local Sector East on I-10 from Houston to HWY 61. Exit right on Hwy 563 to Anahuac. In Anahuac travel south on Hwy 61 (Main Street) to Fort Anahuac Park, 1 mi. on right. Boat ramps are at SW corner of park	20. Closest Airport Baytown airport, Baytown (HPY)
	21. Closest Helo Spot Baytown airport 29 47' 09"N 94 57' 00"W

22. Trustee/Contact Numbers	23. Resources at Risk	24. Width of inlet 3000' in ft.
USCG: (281) 464-4800 RRC: (713) 869-5001	Atlas Priority Medium	25. Water depth in ft. 1'
USCG DUTY: (800) 424-4800 TPWD: (281) 842-8100	Environmental Medium	26. Current Slow
TGLO: (800) 832-8224 NRDA: (512) 463 -9309	Economic	27. No. of Personnel 4
TCEQ: (713) 767-3563 USFWS: (281) 286-8282		

25. Booming Strategy Recommendation Boom to prevent movement of oil into Point Barrow marsh. Deploy backup boom as necessary. Note: Product discharged into lower Trinity Bay tends to collect along this shoreline between Umbrella Point and Point Barrow.
--



29. Prepared By:	30. Reviewed by (PSC)	31. Reviewed by (OSC):
Assignment List	ICS 204 OS (Geographic Response Plan)	Project Updated:

"Response strategies may need to be modified to account for changes due to seasonality, weather conditions, spill characteristics, tides and any other considerations."

1. Incident Name	2. Operational Period (Date/Time)	Assignment List ICS 204-OS
------------------	-----------------------------------	----------------------------

3. Branch	4. Division/Group
-----------	-------------------

5. Operations Personnel	
Operations Section Chief	_____
Branch Director	_____
Division/Group Supervisor	_____

6. Resources Assigned This Period "X" Indicates 204a attachment with special instructions

Resource Identifier	Leader	Contact Info #	# of Persons	Reporting Info/Notes/Remarks

7. Assignments

SAFETY NOTE: Numerous submerged pilings reported in area.

8. Site Number: 52-C	9. Quad Name Umbrella Point	10. NOAA Chart # 11326	11. GLO Atlas Page # 52	12. County Chambers
-------------------------	--------------------------------	---------------------------	----------------------------	------------------------

13. Site Information: McCollum Park McCollum Park (North of Point Barrow)	14. Latitude From: 29 44' 38"	To:
	15. Longitude From: 94 49' 27"	To:

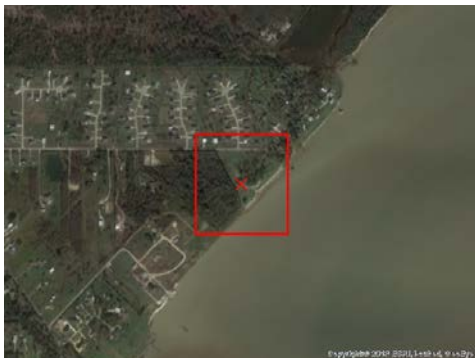
16. Closest Boat Ramp Fort Anahauc Park	17. Distance From Ramp 8 miles	18. Boat Type Multiple Types
--	-----------------------------------	---------------------------------

19. Directions From Local Sector East on I-10 from Houston to HWY 61. Exit right on Hwy 563 to Anahuac. In Anahuac travel south on Hwy 61 (Main Street) to Fort Anahuac Park, 1 mi. on right. Boat ramps are at SW corner of park	20. Closest Airport Baytown airport, Baytown (HPY)
	21. Closest Helo Spot Baytown airport 29 47' 09"N 94 57' 00"W

22. Trustee/Contact Numbers	23. Resources at Risk	24. Width of inlet 3000' in ft.
USCG: (281) 464-4800 RRC: (713) 869-5001	Atlas Priority Medium	25. Water depth in ft. 1'
USCG DUTY: (800) 424-4800 TPWD: (281) 842-8100	Environmental Medium	26. Current Slow
TGLO: (800) 832-8224 NRDA: (512) 463 -9309	Economic	27. No. of Personnel 4
TCEQ: (713) 767-3563 USFWS: (281) 286-8282		

25. Booming Strategy **Recommendation**
 Boom to prevent impact to McCollum Park shoreline. Deploy backup boom as necessary. Note: Product discharged into lower Trinity Bay tends to collect along this shoreline between Umbrella Point and Point Barrow.

AERIAL PHOTO



ON SITE PHOTO



29. Prepared By:	30. Reviewed by (PSC)	31. Reviewed by (OSC):
Assignment List	ICS 204 OS (Geographic Response Plan)	Project Updated:

"Response strategies may need to be modified to account for changes due to seasonality, weather conditions, spill characteristics, tides and any other considerations."

1. Incident Name	2. Operational Period (Date/Time)	Assignment List ICS 204-OS
------------------	-----------------------------------	----------------------------

3. Branch	4. Division/Group
-----------	-------------------

5. Operations Personnel	
Operations Section Chief	_____
Branch Director	_____
Division/Group Supervisor	_____

6. Resources Assigned This Period "X" Indicates 204a attachment with special instructions

Resource Identifier	Leader	Contact Info #	# of Persons	Reporting Info/Notes/Remarks

7. Assignments

SAFETY NOTE: Numerous submerged pilings reported in area.

8. Site Number: 52-D	9. Quad Name Umbrella Point	10. NOAA Chart # 11326	11. GLO Atlas Page # 52	12. County Chambers
-------------------------	--------------------------------	---------------------------	----------------------------	------------------------

13. Site Information: Cedar Gully Creek Cedar Gully Creek	14. Latitude From: 29 42' 43"	To:	15. Longitude From: 94 51' 12"	To:
---	----------------------------------	-----	-----------------------------------	-----

16. Closest Boat Ramp Ocean Mobile Home Park ramp	17. Distance From Ramp 5 miles	18. Boat Type Flat Bottom Boat
--	-----------------------------------	-----------------------------------

19. Directions From Local Sector Beltway 8 North to Hwy 225. Turn East on to Hwy 225 and proceed to Hwy 146. Go North on Hwy 146 to Spur 55, turn right. Proceed to Tri City Beach Rd. and turn right. Take Tri City Beach Rd. to Cedar Gully Creek Rd	20. Closest Airport Baytown Airport (HPY)
	21. Closest Helo Spot Baytown airport (HPY)

22. Trustee/Contact Numbers	23. Resources at Risk	24. Width of inlet 50' in ft.
USCG: (281) 464-4800 RRC: (713) 869-5001	Atlas Priority Medium	25. Water depth in ft. 1'
USCG DUTY: (800) 424-4800 TPWD: (281) 842-8100	Environmental Medium	26. Current Slow
TGLO: (800) 832-8224 NRDA: (512) 463 -9309	Economic N/A	27. No. of Personnel 2
TCEQ: (713) 767-3563 USFWS: (281) 286-8282		

25. Booming Strategy Recommendation Boom to prevent movement of oil into Cedar Gully Creek. Deploy backup boom as necessary.
--



29. Prepared By:	30. Reviewed by (PSC)	31. Reviewed by (OSC):
Assignment List	ICS 204 OS (Geographic Response Plan)	Project Updated:

"Response strategies may need to be modified to account for changes due to seasonality, weather conditions, spill characteristics, tides and any other considerations."