



2021 Winter Storms (21WS) HUD MID Counties Program + Mitigation Set-Aside Program Disaster Recovery (DR) 4586

Questions

- Please submit questions throughout the webinar to the Teams chat box
- All questions submitted to the chat during the webinar will be answered at the end of the presentation
- For technical difficulties with Teams, please email: cdr21ws@recovery.texas.gov



Introductions

GLO Team

Program Director: Aaron Harris

Program Manager: Shamona Lee

Project Manager/Team Lead: Nicole Bradshaw-Carter

Grant Managers: Robin Bowens, Zachary Gibson, Megan Manahan, Shy Howard

Senior Project Manager: Doralicia Rivera

Texas General Land Office
Commissioner Dawn Buckingham, M.D.



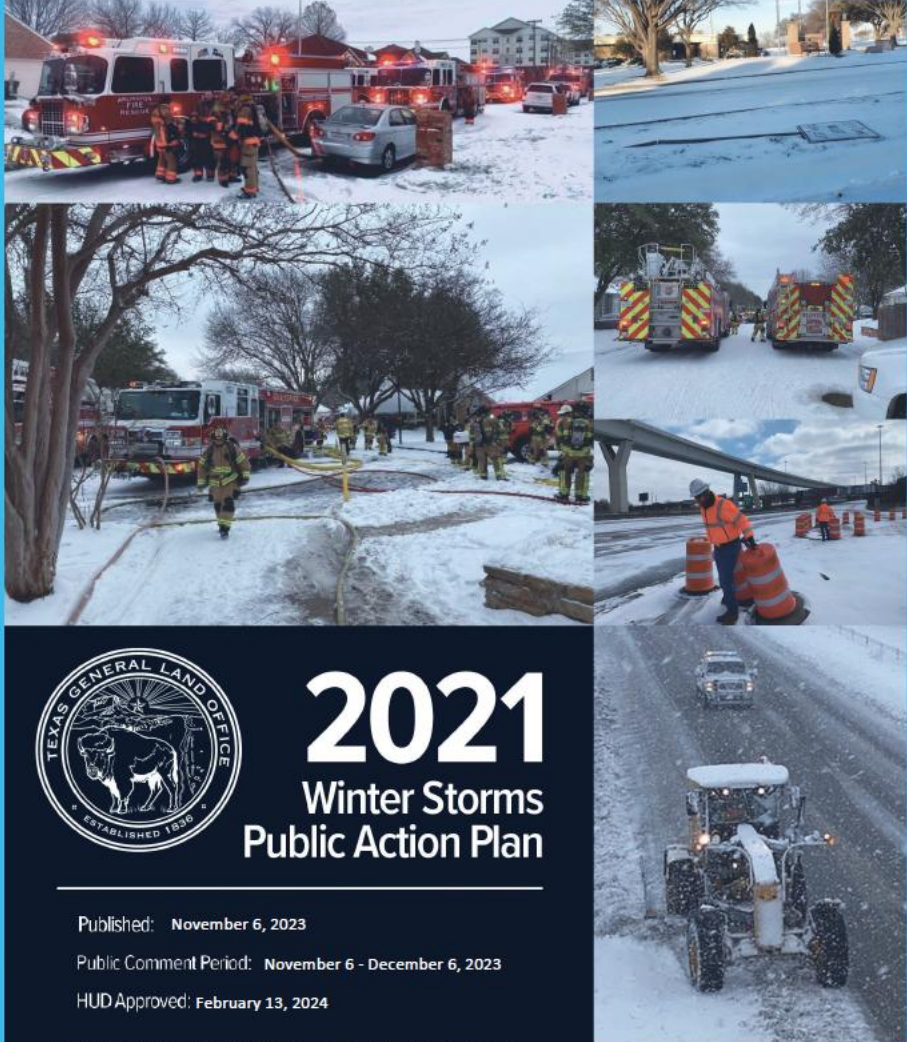
AGENDA

GLO Team

- **Action Plan Overview**
- **Funding Summary**
- **Eligible Projects /
Ineligible Projects**
- **National Objectives**
- **Other Federal Requirements**
- **Subrecipient Application**
- **Timeline**
- **Question and Answers**

Texas General Land Office
Commissioner Dawn Buckingham, M.D.





Action Plan Overview

2021 Winter Storms

Introduction

The State of Texas has received \$43,632,000 in CDBG-DR funding from HUD to support long-term recovery from the 2021 Winter Storms (DR-4586). These funds are intended to address remaining unmet disaster recovery needs after all other assistance has been exhausted.

Eligible subrecipients may apply to carry out activities that:

- Directly address unmet recovery needs from the 2021 Winter Storms.
- Comply with HUD and CDBG-DR requirements.
- Align with the State's approved disaster recovery plan.



2021 Winter Storms Public Action Plan

Published: November 6, 2023

Public Comment Period: November 6 - December 6, 2023

HUD Approved: February 13, 2024

Disaster Relief Supplemental Appropriations Act, 2022 (Pub. L. 117-43, approved September 30, 2021) 87 FR 31636 (May 24, 2022), and Continuing Appropriations Act, 2023 (Pub. L. 117-180, approved September 30, 2022) 88 FR 3198 (January 18, 2023)

Photo Credits: Texas Department of Transportation, Texas Comptroller of Public Accounts, Arlington Texas Fire Department, Eads Texas Fire Department, and Grapevine Texas Fire Department Facebook pages.

Texas General Land Office
Commissioner Dawn Buckingham, M.D.



Funding Summary

2021 Winter Storms

21WS HUD MID Counties Program

- **Most Impacted \$24,768,000.00 (\$10 mil max award per County)**
- **Mitigation Set-Aside - Most Impacted \$5,691,000.00 (\$1,897,000 max award per County required mitigation set-aside)**

Total for Programs= \$30,459,000

At least 70 percent of all program funds will benefit LMI persons or households. The GLO anticipates meeting the LMI requirement by ensuring that at least 70 percent of program funds are spent on LMI-eligible projects.



Texas General Land Office
Commissioner Dawn Buckingham, M.D.



Funding Priorities

2021 Winter Storms

This Action Plan primarily considers and addresses affordable multifamily housing, infrastructure, fire protection facilities improvements and equipment, and power generator needs, which were determined as critical through a comprehensive needs assessment and stakeholder outreach approach that was completed to identify long-term needs and priorities.



Texas General Land Office
Commissioner Dawn Buckingham, M.D.



Funding Priorities

2021 Winter Storms

At least 70% of each County's allocation must meet the Low-to-Moderate Income (LMI) National Objective.

This requirement may be satisfied either through a single project with LMI eligibility totaling at least \$7,107,100, or through multiple projects that collectively meet or exceed \$7,107,100.00 in LMI-qualified activities.

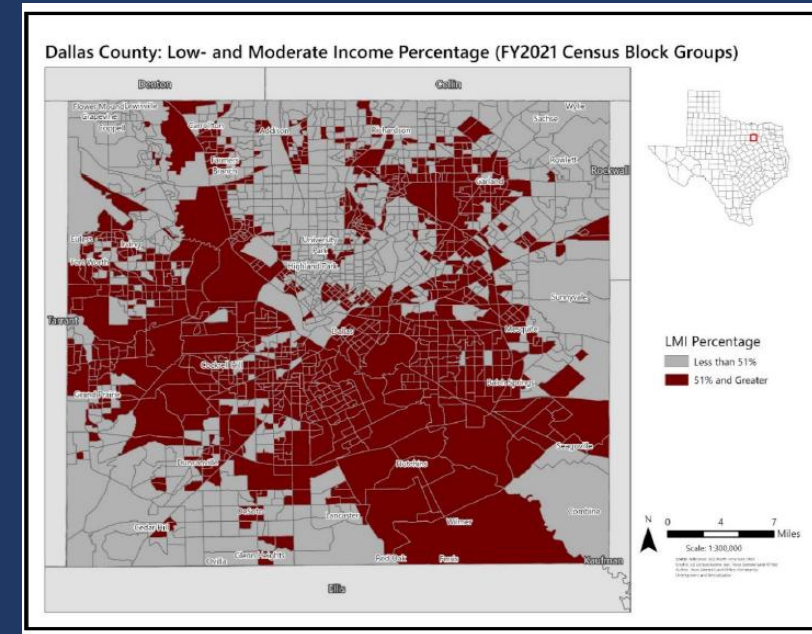
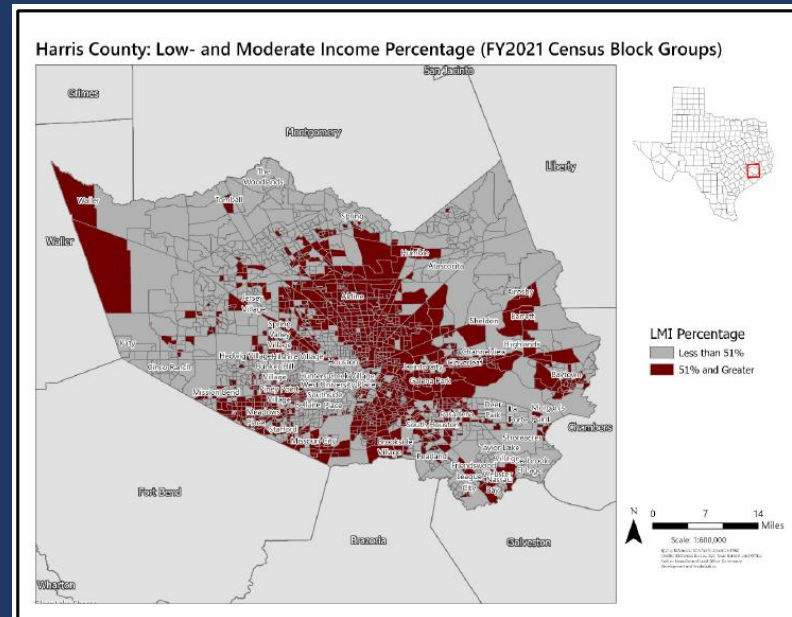
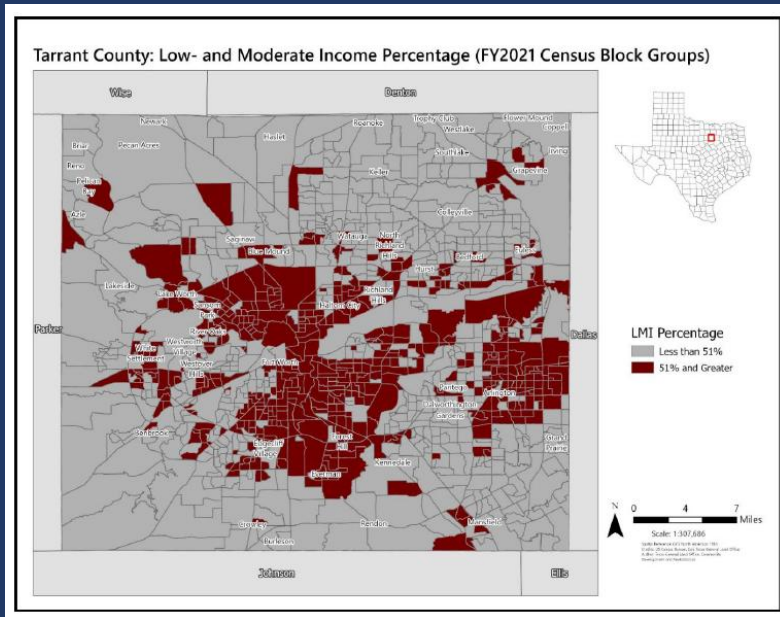


Texas General Land Office
Commissioner Dawn Buckingham, M.D.



HUD MID Counties

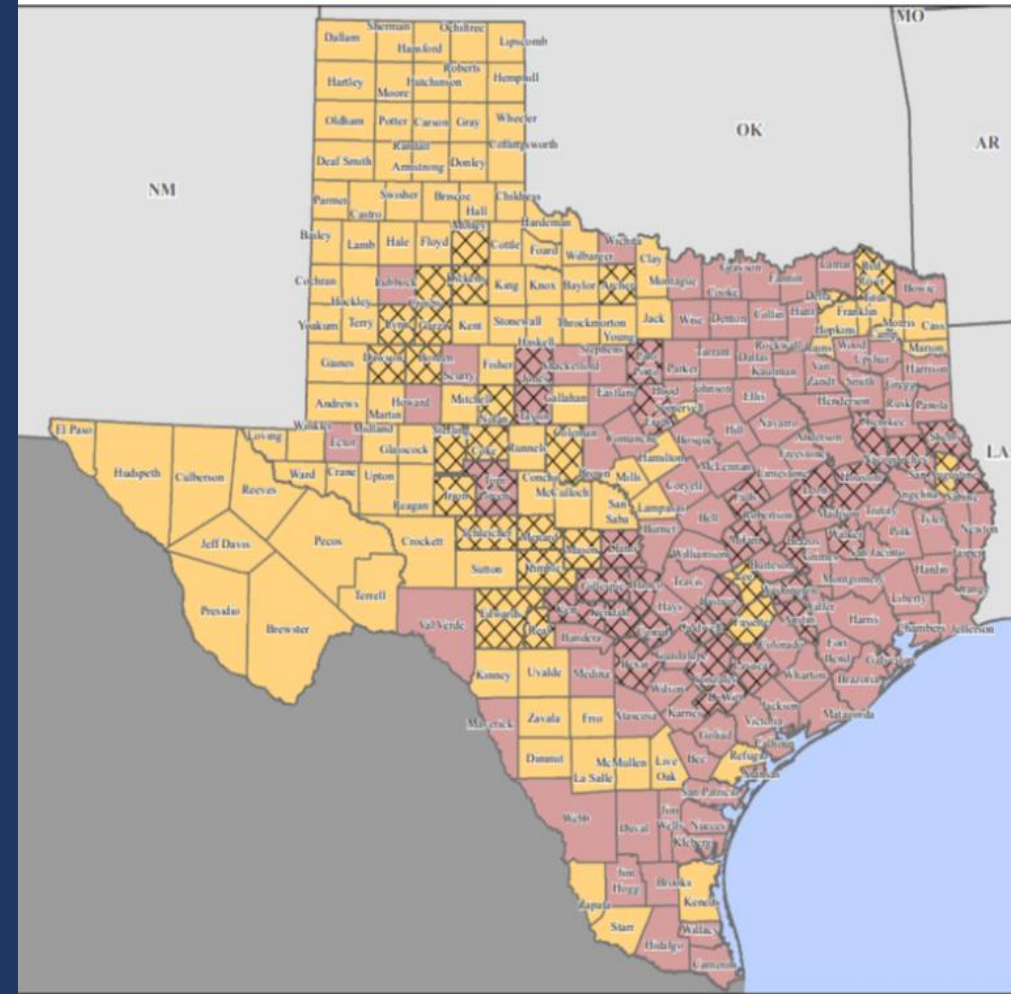
21 Winter Storms Program



HUD MID COUNTIES

21 Winter Storms Program

All 254 counties were eligible, but Dallas, Tarrant, and Harris counties were designated BY HUD to be the most impacted and required to receive 80% of the State's/GLO's allocation.



Texas General Land Office
Commissioner Dawn Buckingham, M.D.



HUD MID Counties

Eligible Activities

HOUSING

- Multifamily housing rehab/new construction ($\geq 51\%$ LMI)

Project construction must be completed within 18 months of the effective date of the contract, unless otherwise extended.

NON-HOUSING

- Infrastructure hardening (such as water and sewer facilities, streets, provision of generators, removal of debris, bridges, etc.);

The GLO will encourage Subrecipients to consider the costs, project timeline, and benefits of the project when selecting CDBG-DR eligible projects.

Texas General Land Office
Commissioner Dawn Buckingham, M.D.



HUD MID Counties

Eligible Activities

NON-HOUSING continued-

- Emergency power generators permanently affixed to public facilities;
- Fire Protection Equipment



HUD MID Counties

Eligible Activities

NON-HOUSING continued-

- Provision of public services within the 15% cap (e.g. housing counseling, legal counseling, job training, mental health, and general health services), and
- Cost share for CDBG-DR eligible projects and other payment of the non-Federal Share required in connection with a Federal grant-in-aid programs.



HUD MID Counties

Non-Eligible Activities

- Buildings and facilities used for the general conduct of **government** is defined as “city halls, county administrative buildings, State Capitol, or office buildings, or other facilities
- Funds may not be provided to a **for-profit entity for an economic development project** unless it has been evaluated and selected in accordance with guidelines developed by HUD



HUD MID Counties

National Objectives

- LMI Area Benefit
- LMI Housing Activity
- Urgent Need
- Elimination of Slum/Blight



Mitigation Set Aside Requirement

Mitigation of Activities to be Incorporated into Project

Project must address unmet disaster recovery needs related to the 2021 Winter Storm or be a stand-alone mitigation project.

Texas General Land Office
Commissioner Dawn Buckingham, M.D.



Procurement

- Eligible applicants must comply with applicable program requirements, such as proper procurement of all services (grant administration, environmental, engineering services, construction, etc.)
- Eligible entities must adhere to the procurement process in compliance with federal requirements defined in 2 CFR 200
- Resources to ensure compliance by local purchasing agents:
 - 2 CFR 200.318 through 200.327 (Federal procurement standards)
 - Appendix II to Part 200 (specific, required contract provisions for non-federal entity contracts under federal awards)
- Reminder: Review and update your local procurement policies and procedures to comply with 2 CFR 200



Procurement Continued

Best Practices:

- Identify roles and responsibilities for all parties involved
- Follow written local procurement policies and procedures in compliance with 2CFR200
- Confer with local purchasing agent or legal counsel
- Ensure fair and open competition
- Solicit responses from an adequate number of qualified sources, document direct outreach
- Procurement resulting in one response is viewed as non-competitive procurement and may result in additional action, see 2CFR200.320(c)
- Contractors that develop or draft specifications, requirements, statements of work, or invitations for bids or requests for proposals must be excluded from competing for such procurements

*For additional information regarding the procurement review process, including best practices and GLO and HUD resources, refer to the one-pager located at this link:
<https://recovery.texas.gov/21WS/>

Texas General Land Office
Commissioner Dawn Buckingham, M.D.



Environmental Review

- HUD Part 58 Environmental Process
 - The level of review will be determined in the application phase
 - The 21WS environmental reviews should be completed in less than six months
 - Environmental reviews should start prior to the 30% design plan
- Recent Rule Changes
 - HUD updated floodplain management regulations at 24 CFR 55
 - Identifying the Federal Flood Risk Managements Standard (FFRMS) rather than only relying on FEMA floods maps
 - NEPA Procedures
 - Required completion of an Environmental Assessment (EA) level of review within one year and a page limit for the main body of the EA of 75 pages
 - HUD Departmental policy that address radon in the environmental review process (most specifically for housing projects)



Environmental Review Continued

Best Practices to consider for meeting the program-specific benchmarks:

- Prepare environmental constraints analysis to identify regulatory hurdles (ex., permits or special studies) and establish consultation timelines
 - Can be completed before project application submission (not required for HUD review)
- HUD funds can supplement a previously cleared Stafford Act-funded project (i.e., FEMA or HUD-DR/MIT) to expedite the review. Examples include the following:
 - Adopt an approved FEMA environmental review
 - Add funds to a previously funded HUD project with no change in scope
 - Scope changes and new funds to a previously approved HUD review could possibly be cleared by re-evaluating the original environmental review

Texas General Land Office
Commissioner Dawn Buckingham, M.D.



Environmental Review Continued

Best Practices Continued:

- HUD assistance in a floodway, a limit of moderate wave action, a coastal high-hazard area, or a Coastal Barrier Resource System is limited
 - Extra due diligence will be required to verify if the project is permissible and whether any potential mitigation requirements can be implemented within the project time frame
- HUD has strict limitations for activities involving critical actions, specifically in certain flood zones. Examples of critical actions include a fire station, water treatment plant, etc.
- Avoid choice-limiting actions
 - Do not acquire property or start construction until AUGF is issued

*For additional information regarding the environmental review process, including best practices, refer to the one-pager located at this link: <https://recovery.texas.gov//>

Texas General Land Office
Commissioner Dawn Buckingham, M.D.



Affirmatively Furthering Fair Housing (AFFH)

AFFH reviews must be conducted as a part of project selection

- Includes assessments of:
 - A proposed project's area demography
 - Socioeconomic characteristics
 - Housing configuration and needs
 - Protected classes and vulnerable populations demographics
 - Educational, transportation, and health care opportunities
 - Environmental hazards or concerns
 - All other factors material to the AFFH determination
- Submissions should show projects are likely to
 - Lessen area racial, ethnic, protected classes and low-income concentrations, and/or
 - Promote affordable housing in low-poverty, diverse and protected classes and vulnerable population areas, and nonminority areas in response to natural hazard-related impacts

Texas General Land Office
Commissioner Dawn Buckingham, M.D.



Documenting Beneficiaries

- Must demonstrate a National Objective for the applicable eligible activities, including:
 1. Benefitting low-and moderate-income (LMI) persons
 - LMA- area benefit
 - LMH- housing
 2. Urgent Need (UN) addresses an urgent need
- LMA (low and moderate area benefit):
 - When service area is primarily residential
 - At least 51% LMI (LMISD or survey data)



Documenting Beneficiaries Continued

Area Benefit

- Where beneficiaries live within service area

Service Area

- Geographic area that will benefit from the eligible project

Methods to document beneficiaries:

1. Use of Census LMISD
2. Use of Surveys

Important:

- Identify if surveys will be needed
- Plan to conduct surveys early



Documenting Beneficiaries Continued

Best Practices

- Consider project location and determine service area early during project development
- Determine whether the identified service area aligns with a Census geographic area to plan for the level of effort required to accurately document beneficiaries
- Use GLO mapping tools to investigate proposed service area and project alignment
- Design clear and legible maps to define service area, project location, and Census geographic area
- Include a narrative to support the service area selected and corresponding beneficiaries
- Use survey method for projects that have a small benefit area or do not align with Census geographic areas represented in the LMISD
- If using the survey method, survey 100% of households for project benefitting less than 200 households and use a random survey for more than 200 households
- Ensure forms are complete and legible and inform the community early to maximize participation

*For additional information regarding the environmental review process, including best practices and GLO Beneficiaries resources, refer to the one-pager located at this link: <https://recovery.texas.gov/21WS/>

Texas General Land Office
Commissioner Dawn Buckingham, M.D.



21 Winter Storms HUD MID County Application (Application)

Survey123- Primary Intake Mechanism, data will be imported to the GLO's System of Record for Managing Grants called Texas Integrated Grant Reporting System (TIGR)

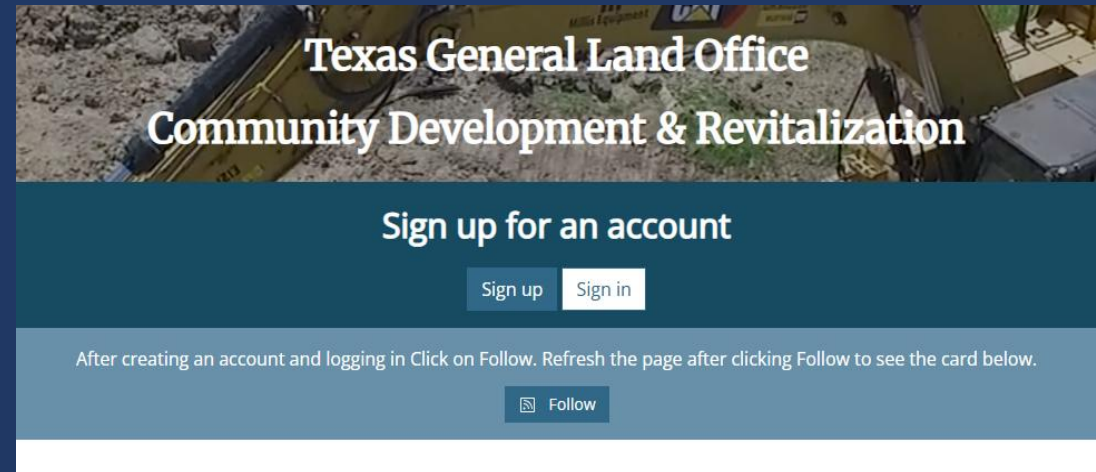
<https://tigr.recovery.texas.gov/>

Texas General Land Office
Commissioner Dawn Buckingham, M.D.



Application: Submission Process

1. Go to <https://tx-glo-cdr.hub.arcgis.com/>
2. Sign up and verify account (you will receive an email from ESRI – NOT THE GLO – to confirm your account).
3. Once logged into account, click the “Follow” button. When that button changes to “Unfollow”, refresh the page and you should see the 2021 Winter Storms card.



[2021 Winter Storms Intake Form and Application](#)

This page contains the applications for the 2021 Winter Storms funding as well as an interactive tool that displays the 2021 Winter Storms Community Development Block...

Apply



Application: Submission Process

4. Click on the "Apply" button



2021 Winter Storms Intake Form and Application

This page contains the applications for the 2021 Winter Storms funding as well as an interactive tool that displays the 2021 Winter Storms Community Development Block...

Apply



Application: Process

The following page provides the following content:

- [2021 Winter Storms HUD MID Counties Application Guide](#)
- [Frequently Asked Questions](#)
- [2021 Winter Storms Viewer User Guide](#)
- [2021 Winter Storms Viewer Layer List](#)

For technical assistance, please contact:
cdr.gis@recovery.texas.gov

2021 Winter Storms HUD MID Counties Application

The 2021 Winter Storms HUD MID Counties Application Guide contains step-by-step instructions to guide applicants through the 2021 Winter Storms Application process. Applicants **MUST USE** the **SAME COMPUTER** and the **SAME BROWSER** (e.g. Microsoft Edge, Google Chrome, Firefox) to complete the application.

[2021 Winter Storms HUD MID Counties Application Guide](#)

[Frequently Asked Questions](#)

Documentation

[2021 Winter Storms CDBG-DR Viewer User Guide](#)

[2021 Winter Storms CDBG-DR Viewer Layer List](#)



[2021 Winter Storms Viewer](#)

A resource to view 2021 Winter Storms data and information geospatially

Explore

[Share this card](#)

Texas General Land Office | CDR
Commissioner Dawn Buckingham, M.D.



Submission Process

Click on “Application” to begin the 2021 Winter Storms HUD MID Counties Application

[2021 Winter Storm HUD MID Counties Application](#)

[Application](#)



Timelines

Grant Implementation



- **Application Start Date: April 1, 2026**
 - **Application Submission Deadline: May 15, 2026**
-
-



Q&A

THANK YOU

Texas General Land Office | CDR
Commissioner Dawn Buckingham, M.D.

